

2128 001 DEED



10314 99 001-031

Nebr Doc Stamp Tax
7-27-99
Date
\$ 4800.00
By [Signature]

RICHARD N. TAKECHI
REGISTER OF DEEDS
DOUGLAS COUNTY, NE

99 JUL 27 PM 3:05

RECEIVED

THIS PAGE INCLUDED FOR INDEXING

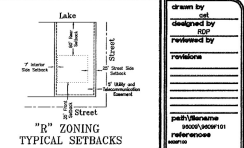
PAGE DOWN FOR BALANCE OF INSTRUMENT

10314 New # 05-02879
01-60000 (old)

FEE	3030	FB	
IMP		CO	COMP (B)
DEL		SCAN	PI

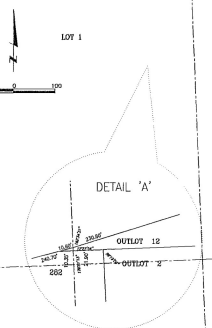
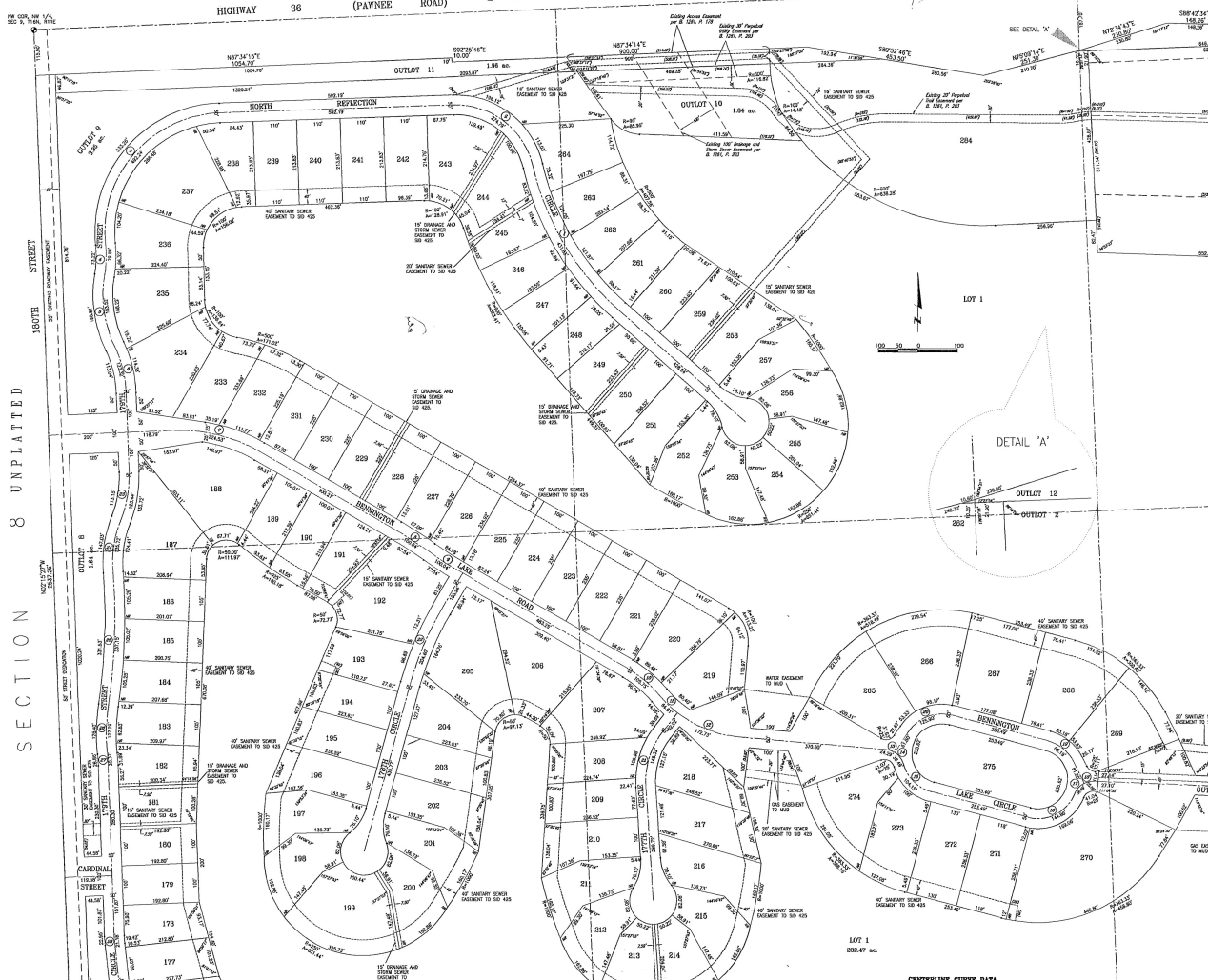
BENNINGTON LAKE

Lots 1 through 284, inclusive, and Outlots 1' through 12, inclusive, being a platting of part of Section 9, Township 16 North, Range 11 East of the 6th P.M. Douglas County, Nebraska



UNPLATTED SECTION 4

HIGHWAY 36 (PAWNEE ROAD)



CENTRELINE CURVE DATA

CHORD	BEARS	ARC LENGTH	CHORD LEN	DELTA ANGLE	CHORD	BEARS	ARC LENGTH	CHORD LEN	DELTA ANGLE
C1	700.00	10.42	43.81	32.92°	C28	30.00	21.92	21.92	90.00°
C2	300.00	21.75	25.48	36.87°	C29	40.00	22.79	22.79	90.00°
C3	300.00	21.75	25.48	36.87°	C30	30.00	21.92	21.92	90.00°
C4	300.00	18.17	20.87	33.69°	C31	30.00	21.92	21.92	90.00°
C5	300.00	18.17	20.87	33.69°	C32	30.00	21.92	21.92	90.00°
C6	300.00	18.17	20.87	33.69°	C33	30.00	21.92	21.92	90.00°
C7	400.00	23.62	27.67	37.92°	C34	30.00	21.92	21.92	90.00°
C8	1000.00	59.86	69.86	34.35°	C35	30.00	21.92	21.92	90.00°
C9	300.00	18.17	20.87	33.69°	C36	30.00	21.92	21.92	90.00°
C10	300.00	18.17	20.87	33.69°	C37	30.00	21.92	21.92	90.00°
C11	300.00	18.17	20.87	33.69°	C38	30.00	21.92	21.92	90.00°
C12	300.00	18.17	20.87	33.69°	C39	30.00	21.92	21.92	90.00°
C13	300.00	18.17	20.87	33.69°	C40	30.00	21.92	21.92	90.00°
C14	300.00	18.17	20.87	33.69°	C41	30.00	21.92	21.92	90.00°
C15	300.00	18.17	20.87	33.69°	C42	30.00	21.92	21.92	90.00°
C16	300.00	18.17	20.87	33.69°	C43	30.00	21.92	21.92	90.00°
C17	300.00	18.17	20.87	33.69°	C44	30.00	21.92	21.92	90.00°
C18	300.00	18.17	20.87	33.69°	C45	30.00	21.92	21.92	90.00°
C19	300.00	18.17	20.87	33.69°	C46	30.00	21.92	21.92	90.00°
C20	300.00	18.17	20.87	33.69°	C47	30.00	21.92	21.92	90.00°
C21	300.00	18.17	20.87	33.69°	C48	30.00	21.92	21.92	90.00°
C22	300.00	18.17	20.87	33.69°	C49	30.00	21.92	21.92	90.00°
C23	300.00	18.17	20.87	33.69°	C50	30.00	21.92	21.92	90.00°
C24	300.00	18.17	20.87	33.69°	C51	30.00	21.92	21.92	90.00°
C25	300.00	18.17	20.87	33.69°	C52	30.00	21.92	21.92	90.00°
C26	300.00	18.17	20.87	33.69°	C53	30.00	21.92	21.92	90.00°
C27	300.00	18.17	20.87	33.69°	C54	30.00	21.92	21.92	90.00°

- NOTES**
- ALL DIMENSIONS ARE GIVEN IN DECIMAL FEET.
 - ALL DIMENSIONS SHOWN ALONG CURVES ARE CHORDS.
 - ALL ANGLES ARE 90° UNLESS OTHERWISE NOTED.
 - ALL LINES ARE TO BE EXACTLY 10 FEET WIDE UNLESS OTHERWISE NOTED.
 - CONCRETE AND ASPHALT SHALL BE 12 INCHES THICK UNLESS OTHERWISE NOTED.
 - ALL CURVE-CENTRIC MARKS ARE AS SET UNLESS OTHERWISE NOTED.
 - ALL CURVE-CENTRIC MARKS ARE AS SET UNLESS OTHERWISE NOTED.

C:\DWG\9609\01.dwg Tue Apr 20 07:44:33 1999 lamp, ryneanson & associates, inc. (a.e. tjpton)

Drawn by: []
 Checked by: []
 Prepared by: []
 Reviewed by: []
 Title: []
 Date: []
 Scale: []
 Job number: []
 Book page: []
 Date: []
 Sheet: []

lamp, ryneanson & associates, inc.
 1000 West 10th Street, Suite 200
 Lincoln, Nebraska 68502-2000
 (402) 441-1111
 FAX: (402) 441-1112

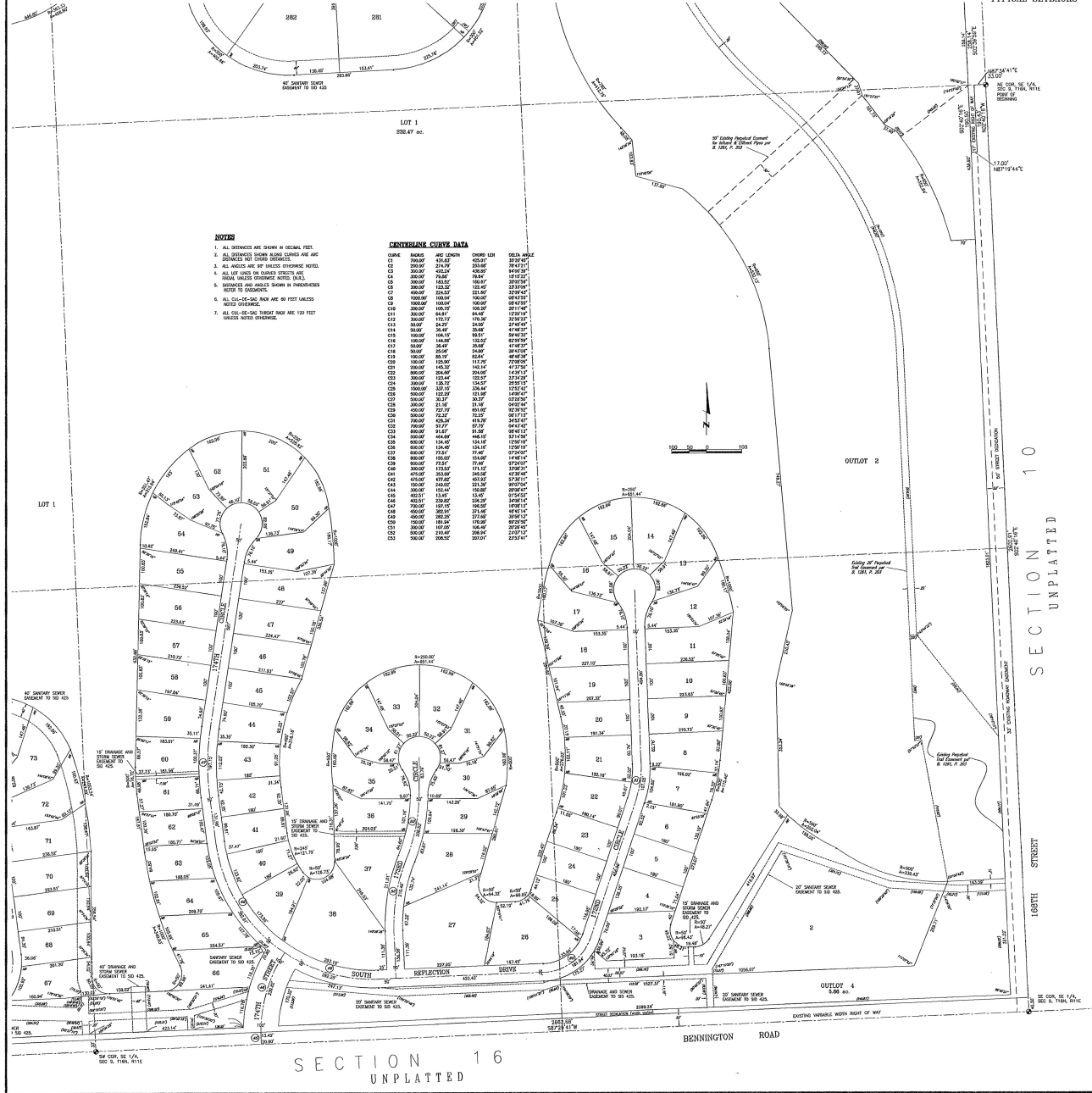
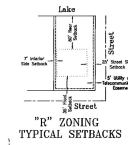
SECTION 9
TOWNSHIP 16 NORTH
RANGE 11 EAST
DOUGLAS COUNTY, NEBRASKA

FWL
PLAT

1 of 5

BENNINGTON LAKE

Lots 1 through 284, inclusive, and Outlots 1 through 12, inclusive, being a platting of part of Section 9, Township 16 North, Range 11 East of the 6th P.M. Douglas County, Nebraska



NOTES

1. ALL DIMENSIONS ARE SHOWN IN DECIMAL FEET.
2. ALL DISTANCES SHOWN ALONG CURVES ARE ARC DISTANCES NOT CHORD DISTANCES.
3. ALL ANGLES ARE OF BELLS OTHERWISE NOTED.
4. ALL LOTS ARE ON ADJACENT STREETS AND ADJACENT UNLESS OTHERWISE NOTED (N.E., S.W., E.S., W.S.).
5. DIMENSIONS AND ANGLES SHOWN IN PARENTHESES REFER TO DISTANCES.
6. ALL CURVE-TO-CURVE ARE 60 FEET UNLESS NOTED OTHERWISE.
7. ALL CURVE-TO-STRAIGHT ROAD ARE 120 FEET UNLESS NOTED OTHERWISE.

CENTRELINE CURVE DATA

CHORD	ARC	ANGLE	AND LENGTH	CHORD	ARC	ANGLE	AND LENGTH
C1	700.00	171.87	103.87	552.84	45.00	10.00	2.00
C2	300.00	274.75	163.85	584.71	10.00	2.00	0.40
C3	300.00	62.87	38.92	480.00	10.00	2.00	0.40
C4	300.00	78.88	48.00	500.00	10.00	2.00	0.40
C5	300.00	143.57	86.87	380.00	10.00	2.00	0.40
C6	300.00	123.22	75.00	120.00	10.00	2.00	0.40
C7	600.00	224.57	133.00	350.00	10.00	2.00	0.40
C8	300.00	103.54	62.00	580.00	10.00	2.00	0.40
C9	300.00	105.77	63.87	250.00	10.00	2.00	0.40
C10	300.00	84.87	50.87	120.00	10.00	2.00	0.40
C11	300.00	172.77	103.87	350.00	10.00	2.00	0.40
C12	300.00	24.25	15.00	220.00	10.00	2.00	0.40
C13	300.00	144.87	86.87	580.00	10.00	2.00	0.40
C14	300.00	104.15	63.87	580.00	10.00	2.00	0.40
C15	100.00	144.87	86.87	820.00	10.00	2.00	0.40
C16	50.00	36.47	22.50	410.00	10.00	2.00	0.40
C17	50.00	36.47	22.50	410.00	10.00	2.00	0.40
C18	300.00	88.88	54.87	580.00	10.00	2.00	0.40
C19	100.00	125.57	75.00	720.00	10.00	2.00	0.40
C20	300.00	145.57	88.87	410.00	10.00	2.00	0.40
C21	300.00	204.87	123.87	140.00	10.00	2.00	0.40
C22	300.00	114.57	70.87	220.00	10.00	2.00	0.40
C23	300.00	123.22	75.00	120.00	10.00	2.00	0.40
C24	300.00	137.15	83.87	170.00	10.00	2.00	0.40
C25	300.00	123.22	75.00	140.00	10.00	2.00	0.40
C26	300.00	21.57	13.87	400.00	10.00	2.00	0.40
C27	300.00	21.57	13.87	400.00	10.00	2.00	0.40
C28	300.00	72.25	43.87	580.00	10.00	2.00	0.40
C29	300.00	42.87	26.87	410.00	10.00	2.00	0.40
C30	300.00	31.57	19.87	400.00	10.00	2.00	0.40
C31	300.00	31.57	19.87	400.00	10.00	2.00	0.40
C32	300.00	81.87	50.87	580.00	10.00	2.00	0.40
C33	300.00	81.87	50.87	580.00	10.00	2.00	0.40
C34	300.00	134.87	83.87	170.00	10.00	2.00	0.40
C35	300.00	124.87	75.87	120.00	10.00	2.00	0.40
C36	300.00	124.87	75.87	120.00	10.00	2.00	0.40
C37	300.00	72.25	43.87	140.00	10.00	2.00	0.40
C38	300.00	155.87	95.87	140.00	10.00	2.00	0.40
C39	300.00	72.25	43.87	120.00	10.00	2.00	0.40
C40	300.00	172.57	103.87	350.00	10.00	2.00	0.40
C41	475.00	283.87	173.87	120.00	10.00	2.00	0.40
C42	475.00	283.87	173.87	120.00	10.00	2.00	0.40
C43	150.00	245.87	150.87	350.00	10.00	2.00	0.40
C44	150.00	150.87	90.87	350.00	10.00	2.00	0.40
C45	150.00	150.87	90.87	350.00	10.00	2.00	0.40
C46	202.51	13.87	8.87	510.00	10.00	2.00	0.40
C47	202.51	13.87	8.87	510.00	10.00	2.00	0.40
C48	202.51	238.87	148.87	140.00	10.00	2.00	0.40
C49	202.51	238.87	148.87	140.00	10.00	2.00	0.40
C50	400.00	382.87	238.87	140.00	10.00	2.00	0.40
C51	400.00	382.87	238.87	140.00	10.00	2.00	0.40
C52	100.00	183.87	113.87	350.00	10.00	2.00	0.40
C53	100.00	183.87	113.87	350.00	10.00	2.00	0.40
C54	300.00	208.87	128.87	270.00	10.00	2.00	0.40

C:\DMS\609f403.dwg Tue Apr 20 07:47:11 1999 lamp, rymearson & associates, inc. (a.e. tipton)

Drawn by
Designed by
Reviewed by
Revisions

lamp, rymearson & associates, inc.
1600 S. 16th Street
Lincoln, NE 68502
BENNINGTON LAKE
DOUGLAS COUNTY, NEBRASKA

FWAL
PLAT

Job number: 609f403
book: 01-002
page:
date: MAR. 1, 1999
sheet:
3 of 5

