

WILSON & JOHNSON :

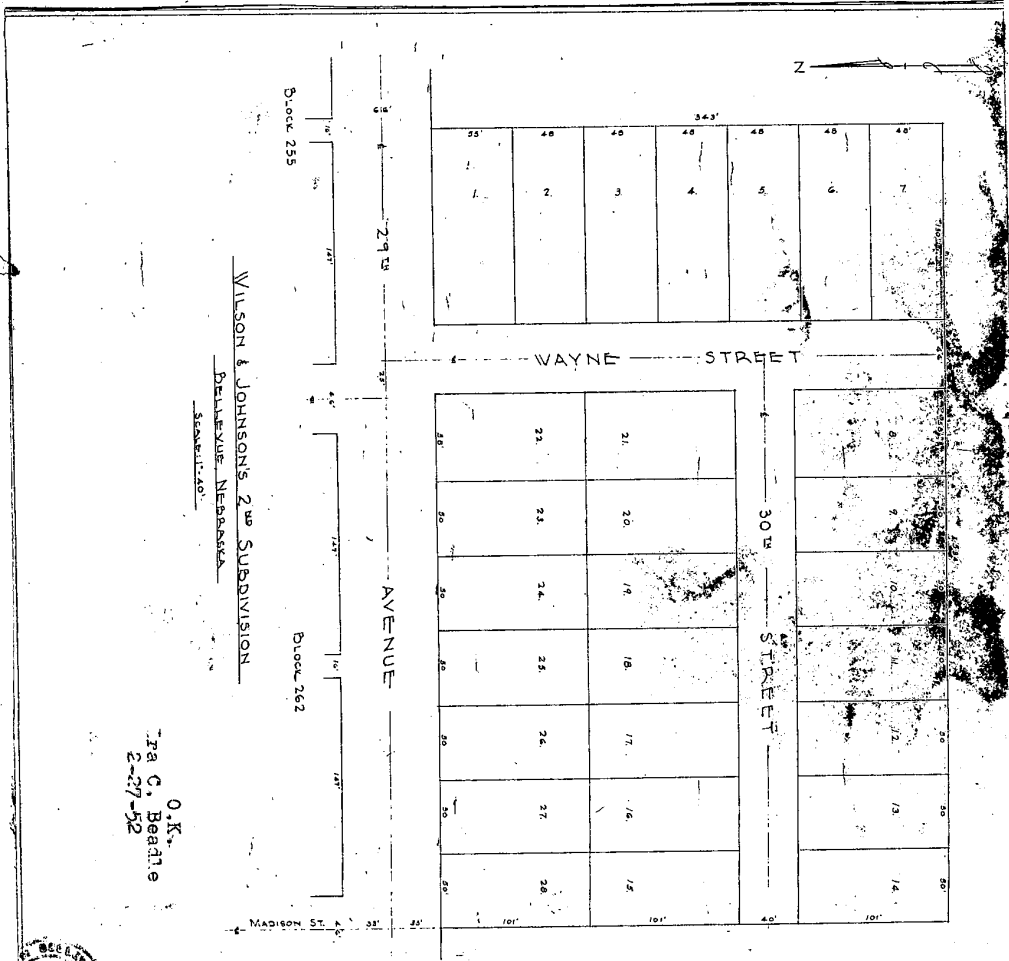
TO :

THE PUBLIC :

Plat \$2.50 pd. :

Filed February 27, 1952 at 8 o'clock A.M.

Lester Houchell County Clerk.



WILSON & JOHNSON'S 2nd SUBDIVISION
 BELLEVUE, NEBRASKA
 S.W. 1/4 - 40'

O.K.
 Ira C. Beadle
 2-27-52



City Clerk
 By *[Signature]*
 Mayor

My commission expires *[Date]*
 Notary Public
 State of Nebraska

Witness my hand and official seal in said county, on this 27th day of February, 1952.
 LAYTON E. JOHNSON
 CLARK M. WILSON

DEDICATION AND DEDITION FOR ANNEXATION
 We, the undersigned, Clerk of Wilson and Johnson's (joint and several) subdivision, in addition to the City of Bellevue in Sarpy County, Nebraska, do hereby certify that the lots shown on the attached plat, numbered 1 through 28, and located in Block 255 and Block 262, are situated on the south side of Wayne Street, between Avenue and 30th Street, and are adjacent to the present south line of said street. These lots have been heretofore used as a residential subdivision, and have been used as such for many years. The lots are shown on the attached plat, and are numbered 1 through 28. The lots are situated on the south side of Wayne Street, between Avenue and 30th Street, and are adjacent to the present south line of said street. The lots are shown on the attached plat, and are numbered 1 through 28. The lots are situated on the south side of Wayne Street, between Avenue and 30th Street, and are adjacent to the present south line of said street. The lots are shown on the attached plat, and are numbered 1 through 28.

SURVEYOR'S CERTIFICATE
 I, Walter C. Mattingly, Surveyor, do hereby certify that I have accurately surveyed and located the corners and boundaries of the lots shown on the attached plat, numbered 1 through 28, and located in Block 255 and Block 262, and that the lots are situated on the south side of Wayne Street, between Avenue and 30th Street, and are adjacent to the present south line of said street. The lots are shown on the attached plat, and are numbered 1 through 28. The lots are situated on the south side of Wayne Street, between Avenue and 30th Street, and are adjacent to the present south line of said street. The lots are shown on the attached plat, and are numbered 1 through 28.