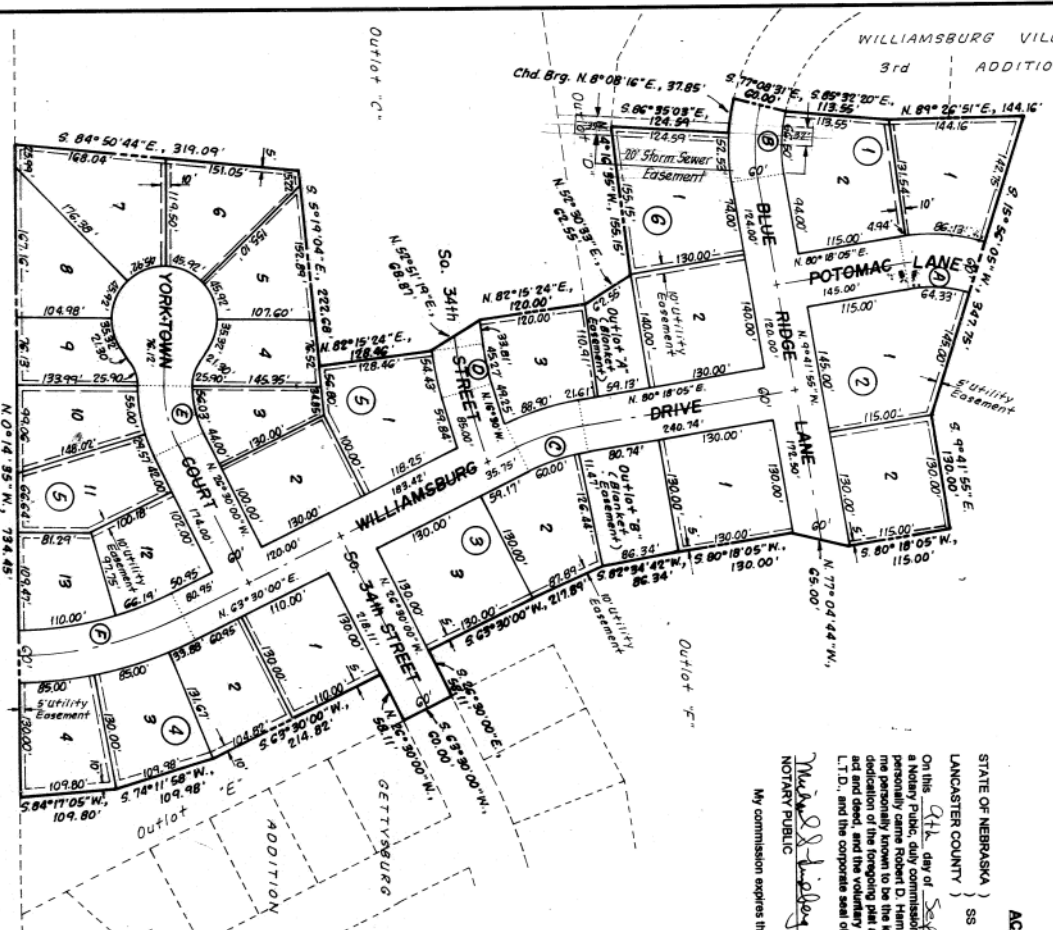


WILLIAMSBURG VILLAGE 9th ADDITION

Scale: 1" = 100'



(A) $\Delta = 25^{\circ} 38' 00''$	(B) $\Delta = 22^{\circ} 33' 24''$	(C) $\Delta = 16^{\circ} 48' 05''$	(D) $\Delta = 9^{\circ} 45' 34''$	(E) $\Delta = 27^{\circ} 00' 00''$	(F) $\Delta = 32^{\circ} 15' 25''$
$R = 175.00'$	$R = 200.00'$	$R = 274.24'$	$R = 326.52'$	$R = 150.00'$	$R = 415.47'$
$T = 39.81'$	$T = 39.89'$	$T = 40.50'$	$T = 23.00'$	$T = 96.07'$	$T = 96.20'$
$L = 78.29'$	$L = 78.74'$	$L = 80.42'$	$L = 43.90'$	$L = 70.64'$	$L = 170.40'$

ACKNOWLEDGMENT

STATE OF NEBRASKA)
 LANCASTER COUNTY) SS
 On this 9th day of September, 1973, before me, the undersigned, a Notary Public, duly commissioned, qualified for and exercising the duties of said office in and for the County of Lancaster, Nebraska, a person known to me to be the identical person whose name is affixed to the foregoing plat and the acknowledgment the same to be his voluntary act and deed, and the voluntary act and deed of said R.J.L. Development South L.T.D., and the corporate seal of said corporation was affixed thereto by its authority.

Maury S. Hedberg
 NOTARY PUBLIC
 My commission expires the 2nd day of May, 1977

DEDICATION

The foregoing plat known as "WILLIAMSBURG VILLAGE 9th ADDITION," and as described in the Surveyor's Certificate is made with the free consent and in accordance with the desires of the undersigned, sole owner, and the easements shown thereon are hereby granted in perpetuity to the City of Lincoln, Nebraska, a municipal corporation, the Lincoln Telephone & Telegraph Company, a corporation of the State of Nebraska, for the purpose of providing for the installation, maintenance, repair, operation and maintenance of wires, cables, conduits, fixtures, poles, towers, pipes and equipment for the distribution of electricity and gas; telephone and cable television; wastewater collectors; storm drains, water mains and all appurtenances thereto, over, upon or under the easements as shown on the foregoing plat. The construction or location of any building or structure, excluding fences, over, upon or under any easement shown thereon shall be prohibited.

The City of Lincoln, its successors or assigns are hereby held harmless for the cost of replacement or damage to any improvement or vegetation over, upon or under any easement shown thereon.

The streets shown thereon are hereby dedicated to the public.
 Direct vehicular access to South 4th Street and Pine Lake Road from Outlook "F" is hereby relinquished.

WITNESS MY HAND THIS 9th day of September, 1973

Robert D. Harrington
 Robert D. Harrington, President
 R.J.L. Development South L.T.D.

PLANNING COMMISSION APPROVAL

The Lincoln-Lancaster County Planning Commission has approved this final plat and accepted the offer of dedication on this 2nd day of September, 1973 by Resolution No. 0019

ATTEST: *Virginia Horton Young*
 Clerk



WILLIAMSBURG VILLAGE 9th ADDITION

SURVEYOR'S CERTIFICATE

I hereby certify that I have accurately surveyed and staked out the foregoing plat of WILLIAMSBURG VILLAGE 9th ADDITION, a subdivision of Quarter 24 of Cambridge Addition, located in the SE 1/4 of Section 16, T.3 N., R.7 E., of the 6th P.M., Lancaster County, Nebraska, described as follows:

Commencing at the SW corner of said SE 1/4, and extending thence N. 0° 14' 35" W. on the west line of said SE 1/4, 909.00 feet to the point of beginning;

thence continuing N. 0° 14' 35" W. on said west line, 1732.02 feet;

thence N. 89° 59' 59" E., 740.00 feet;

thence S. 1° 14' 35" E., 114.00 feet to a point of curvature of a circular curve to the left having a central angle of 23° 22' 40" and a radius of 254.87 feet, and whose chord bears S. 1° 14' 35" E., 114.00 feet;

thence on the arc of said circular curve, 116.23 feet;

thence S. 89° 15' E., 237.31 feet;

thence S. 89° 15' E., 548.90 feet;

thence S. 45° 35' 09" W., 178.48 feet;

thence N. 52° 10' 02" W., 56.81 feet;

thence N. 89° 22' 32" W., 120.83 feet;

thence S. 89° 22' 32" W., 108.77 feet;

thence S. 89° 10' 14" W., 163.47 feet;

thence S. 53° 29' 09" W., 171.32 feet;

thence S. 27° 44' 00" W., 145.70 feet;

thence S. 89° 34' 35" E., 124.59 feet to a point on a circular curve to the right having a central angle of 9° 20' 25", a radius of 230.00 feet and whose chord bears N. 89° 34' 35" E., 124.59 feet;

thence on the arc of said circular curve, 37.80 feet;

thence S. 77° 09' 31" E., 90.00 feet;

thence S. 69° 22' 20" E., 113.55 feet;

thence N. 89° 28' 51" E., 190.13 feet;

thence S. 70° 33' 07" E., 200.17 feet;

thence S. 89° 34' 35" E., 124.59 feet to a point on a circular curve to the right having a central angle of 9° 20' 25", a radius of 230.00 feet and whose chord bears N. 89° 34' 35" E., 124.59 feet;

thence on the arc of said circular curve, 37.80 feet;

thence S. 77° 09' 31" E., 90.00 feet;

thence S. 69° 22' 20" E., 113.55 feet;

thence N. 89° 28' 51" E., 190.13 feet;

thence S. 70° 33' 07" E., 200.17 feet;

thence S. 89° 34' 35" E., 124.59 feet to a point on a circular curve to the left having a central angle of 23° 22' 40" and a radius of 254.87 feet, and whose chord bears S. 1° 14' 35" E., 114.00 feet;

thence on the arc of said circular curve, 116.23 feet;

thence S. 89° 15' E., 237.31 feet;

thence S. 89° 15' E., 548.90 feet;

thence S. 45° 35' 09" W., 178.48 feet;

thence N. 52° 10' 02" W., 56.81 feet;

thence N. 89° 22' 32" W., 120.83 feet;

thence S. 89° 22' 32" W., 108.77 feet;

thence S. 89° 10' 14" W., 163.47 feet;

thence S. 53° 29' 09" W., 171.32 feet;

thence S. 27° 44' 00" W., 145.70 feet;

thence S. 89° 34' 35" E., 124.59 feet to a point on a circular curve to the right having a central angle of 9° 20' 25", a radius of 230.00 feet and whose chord bears N. 89° 34' 35" E., 124.59 feet;

thence on the arc of said circular curve, 37.80 feet;

thence S. 49° 27' 09" E., 218.34 feet;

thence S. 49° 27' 09" E., 187.40 feet;

thence S. 49° 27' 09" E., 122.54 feet;

thence S. 49° 27' 09" E., 112.05 feet;

thence S. 49° 27' 09" E., 125.00 feet;

thence S. 89° 24' 35" E., 91.19 feet;

thence N. 89° 24' 35" E., 135.00 feet to a point on a circular curve to the left having a central angle of 1° 23' 57", a radius of 650.00 feet, and whose chord bears S. 1° 23' 57" E., 135.00 feet;

thence on the arc of said circular curve, 15.75 feet;

thence N. 79° 11' 09" E., 80.00 feet to a point on a circular curve to the right having a central angle of 2° 09' 41", a radius of 570.00 feet, and whose chord bears N. 79° 11' 09" E., 80.00 feet;

thence on the arc of said circular curve, 21.50 feet;

thence N. 79° 50' 09" E., 130.00 feet;

thence N. 79° 50' 09" E., 89.54 feet;

thence N. 79° 50' 09" E., 82.97 feet;

thence N. 82° 05' 18" E., 50.55 feet;

thence S. 79° 49' 57" E., 140.25 feet;

thence S. 29° 07' 15" E., 584.76 feet;

thence N. 89° 24' 35" E., 282.71 feet to the west line of South 40th Street;

thence S. 0° 14' 35" W., 35.05 feet;

thence S. 0° 14' 35" W., 35.05 feet;

thence N. 89° 10' 14" W., 443.19 feet;

thence N. 79° 44' 00" W., 400.00 feet;

thence S. 89° 10' 14" W., 144.42 feet;

thence S. 89° 10' 14" W., 144.42 feet;

thence S. 89° 10' 14" W., 144.42 feet to a point on the north line of Pine Lake Road;

thence N. 89° 10' 14" W., 422.05 feet;

thence N. 89° 10' 14" W., 152.82 feet;

thence N. 89° 10' 14" W., 679.54 feet;

thence N. 89° 10' 14" W., 679.54 feet;

thence S. 89° 10' 14" W., 679.54 feet to the point of beginning, containing 96.885 acres.

Permanent markers have been found or placed at all corners on the boundary of this subdivision. Temporary markers have been placed at all back corners and the intersection of the boundary lines with the street and the subdivision lines will be completed prior to the construction or the conveyance of any lot shown on this plat.

All dimensions are chord measurements unless shown otherwise, and are in feet or decimals of a foot.

Signed this 15th day of September, 1953.

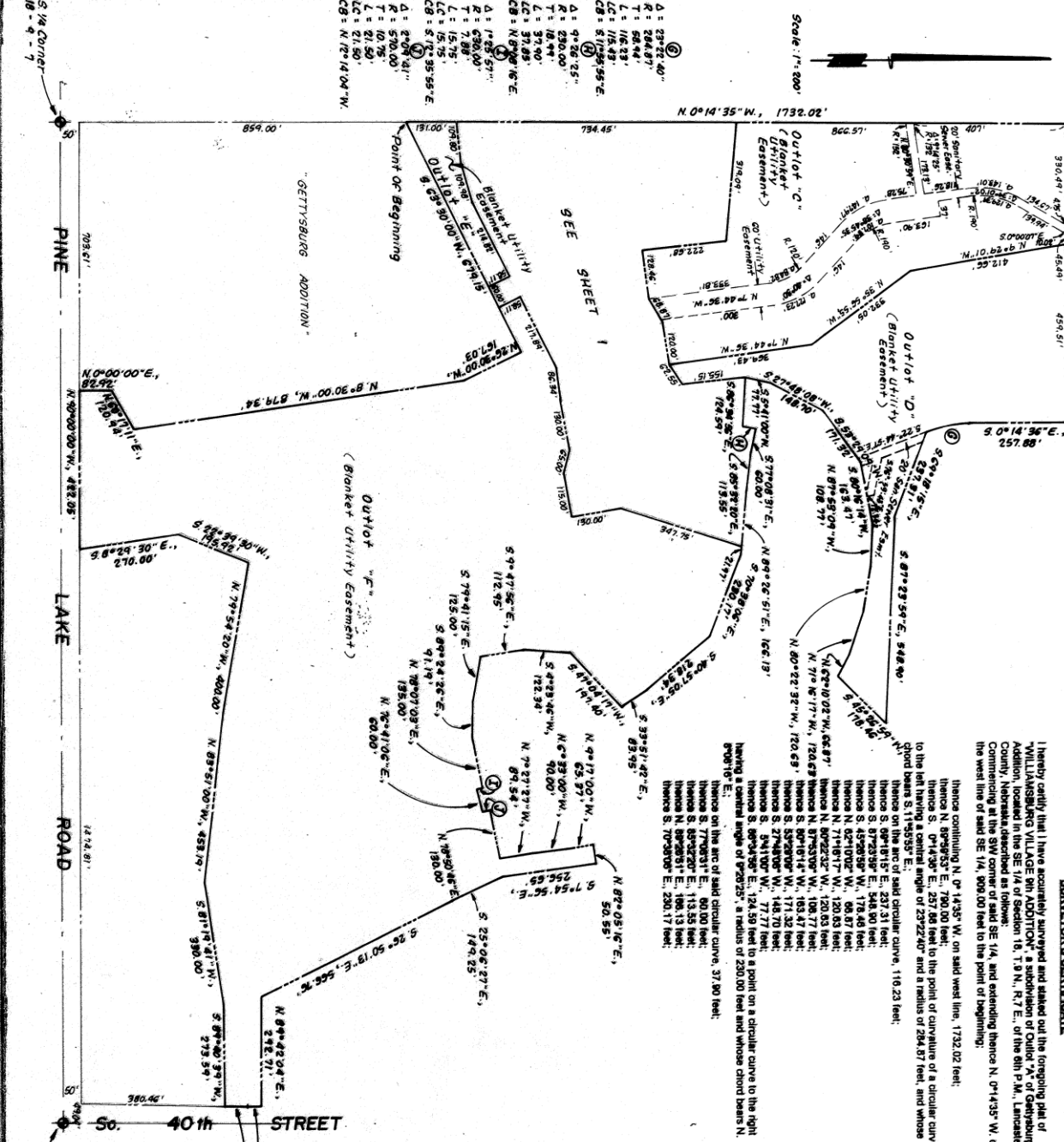
Walter J. L. Tom

WALTER J. L. TOM
REGISTERED
LAND SURVEYOR
L.S.-314
1916 L. 10th L.S. 314

INST. NO. 94-781
A-326 # 2718

2

9450



Scale: 1" = 600'

Point of Beginning

Blanket Utility Easement

Outlot "A"

Outlot "B"

Outlot "C"

Outlot "D"

Outlot "E"

Outlot "F"

Blanket Utility Easement

So. 40th Street

Pine Lake Road

9450