

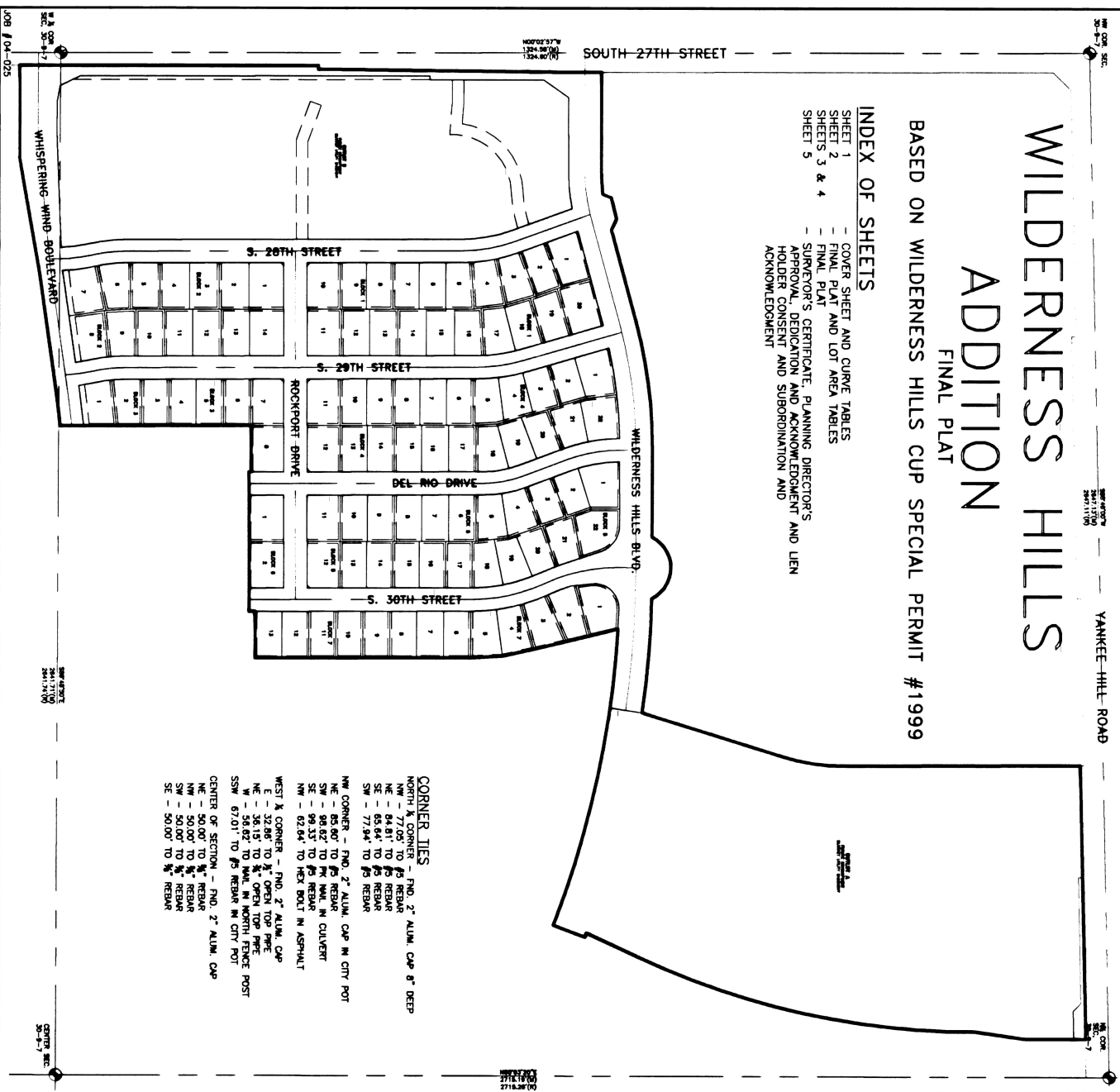
WILDERNESS HILLS ADDITION

FINAL PLAT

BASED ON WILDERNESS HILLS CUP SPECIAL PERMIT #1999

INDEX OF SHEETS

- SHEET 1 - COVER SHEET AND CURVE TABLES
- SHEET 2 - FINAL PLAT AND LOT AREA TABLES
- SHEETS 3 & 4 - SURVEYOR'S CERTIFICATE, PLANNING DIRECTOR'S APPROVAL, DEDICATION AND ACKNOWLEDGMENT AND LIEN HOLDER CONSENT AND SUBORDINATION AND ACKNOWLEDGMENT
- SHEET 5



CORNER TIES

- NORTH & CORNER - FND. 2" ALUM. CAP 8" DEEP
- NW - 77.05' TO #3 REBAR
- SE - 65.64' TO #3 REBAR
- SW - 77.94' TO #3 REBAR
- NW CORNER - FND. 2" ALUM. CAP IN CITY POT
- NE - 63.00' TO #3 REBAR
- SE - 99.33' TO #3 REBAR
- SW - 62.64' TO HEX BOLT IN ASPHALT
- WEST & CORNER - FND. 2" ALUM. CAP
- NE - 32.88' TO #3 OPEN TOP PIPE
- NW - 58.62' TO NAIL IN NORTH FENCE POST
- SSW - 67.01' TO #3 REBAR IN CITY POT
- CENTER OF SECTION - FND. 2" ALUM. CAP
- NE - 50.00' TO #3 REBAR
- SE - 50.00' TO #3 REBAR
- SW - 50.00' TO #3 REBAR
- SSW - 50.00' TO #3 REBAR

05034575

JUN 24 P 1:19
LANCASTER COUNTY, PA

JYST. No 2005

034575

\$152.00

#4111

BLOCK 1
CORNER
WITNESSES
CHECKED
EDITED
H

NO SCALE



LEGEND

- CORNER FOUND (IS REBAR UNLESS OTHERWISE NOTED)
- CORNER SET (N/292° REBAR W/ CAP STAMPED IS #607)
- ⊕ SECTION CORNER
- MEASURED DISTANCE
- (R) RECORDED DISTANCE
- PLAT LIMITS
- EXISTING EASEMENT
- PROPOSED EASEMENT
- CENTER LINE
- SECTION LINE

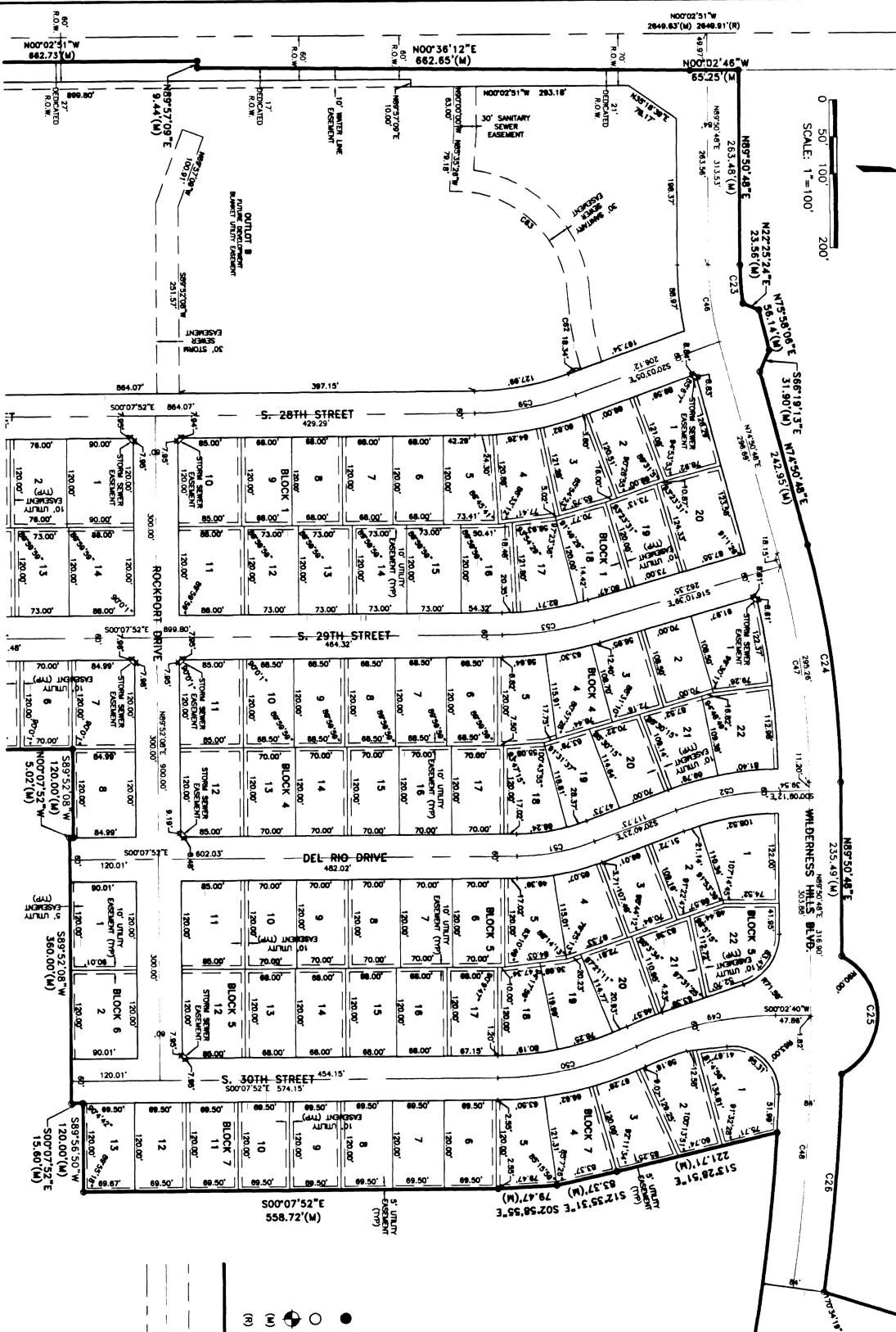
CHORD	DELTA	ARC LENGTH	CHORD BEARING	CHORD LENGTH
C23	87.936°	52.015'	S89.241°02'E	51.96'
C24	150.000°	324.15'	S27.201°48'E	324.23'
C25	128.113°	198.66'	S89.241°11'E	198.81'
C26	67.245°	229.82'	S87.144°1'E	229.66'
C27	172.323°	182.28'	S12.253°17'W	181.65'
C28	82.093°	91.485'	S12.253°17'W	89.51'
C29	172.323°	182.28'	S12.253°17'W	181.65'
C30	27.153°	77.65'	S83.096°10'W	75.62'
C46	150.000°	104.72'	S82.201°48'E	104.42'
C47	150.000°	114.18'	S82.201°48'E	113.28'
C48	87.936°	268.27'	S89.241°02'E	267.96'
C49	42.838°	193.55'	S12.282°17'E	192.05'
C51	24.838°	139.11'	S12.282°17'E	137.22'
C52	202.111°	143.25'	S107.448°1'W	142.48'
C53	160.246°	128.03'	S89.209°15'W	128.61'
C54	124.742°	89.33'	S09.514°2'E	89.14'
C55	87.424°	67.81'	N89.024°08'W	67.73'
C56	270.38°	81.78'	S83.096°10'W	81.78'
C58	12.533°	80.24'	N89.271°1'W	80.03'
C59	18.551°	136.07'	N107.052°38'W	136.37'
C60	57.270°	38.05'	N87.183°1'E	38.04'
C61	27.153°	18.28'	N83.170°1'E	18.28'
C62	12.554°	101.55'	N87.149°1'E	101.33'
C63	89.534°	235.35'	S41.949°1'W	231.34'

WILDERNESS HILLS ADDITION

FINAL PLAT
 BASED ON WILDERNESS HILLS CUP SPECIAL PERMIT #1999



0 50' 100' 200'
 SCALE: 1"=100'



- LEGEND**
- CORNER FOUND (R) REBAR UNLESS OTHERWISE NOTED
 - CORNER SET (R) 3/4" REBAR W/ CAP STAMPED US #607
 - SECTION CORNER
 - MEASURED DISTANCE
 - RECORDED DISTANCE
 - PLAT LIMITS
 - EXISTING EASEMENT
 - PROPOSED EASEMENT
 - CENTER LINE
 - SECTION LINE

WILDERNESS HILLS ADDITION

FINAL PLAT
 BASED ON WILDERNESS HILLS CUP SPECIAL PERMIT #1999



SCALE: 1"=100'

LEGEND

- CORNER FOUND (AS BEAR UNLESS OTHERWISE NOTED)
- CORNER SET (6x7/24" BEAR W/ 1/4" DIA STAMPED LS #897)
- ⊙ SECTION CORNER
- (M) MEASURED DISTANCE
- (R) RECORDED DISTANCE
- PLAT LIMITS
- - - EXISTING EASEMENT
- - - PROPOSED EASEMENT
- - - CENTER LINE
- - - SECTION LINE

