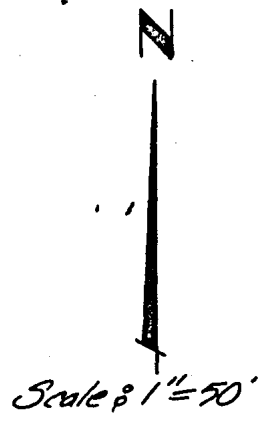
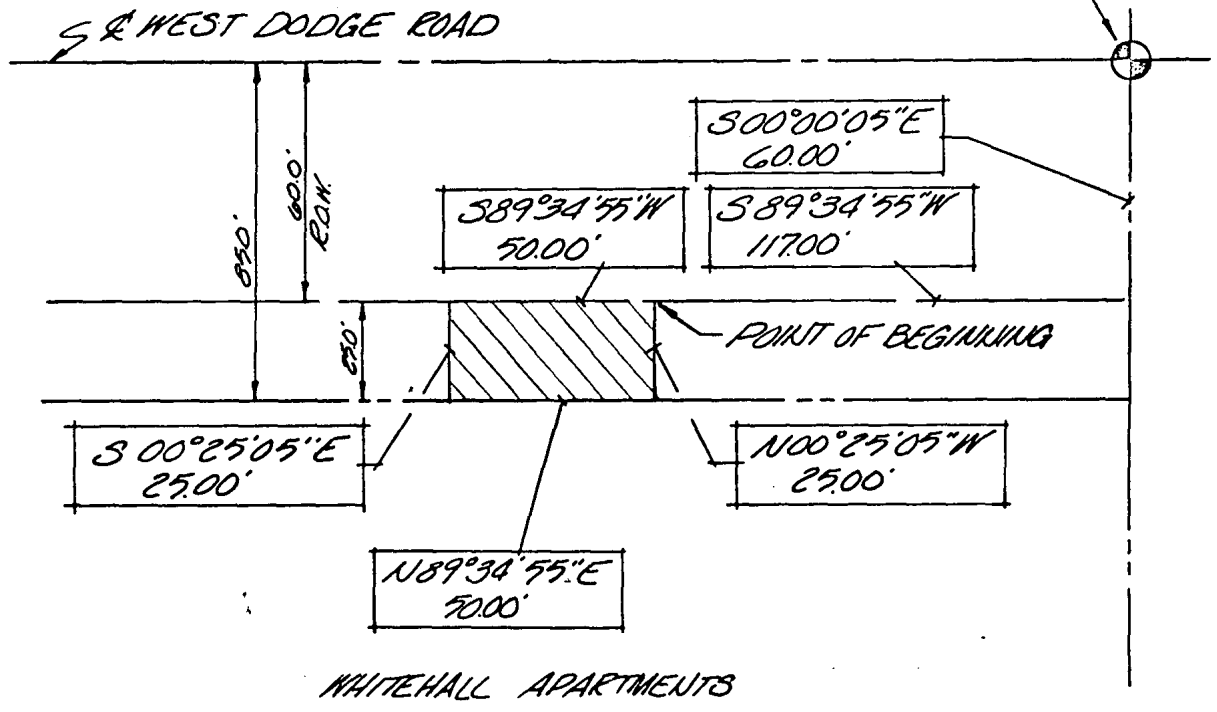


19-15-12



NE CORNER OF THE NW 1/4
 OF SECTION 19 - T15N - R12E
 OF THE 6TH P.M., DOUGLAS
 COUNTY, NEBRASKA.



WHITEHALL APARTMENTS

LEGAL DESCRIPTION

A Permanent Easement for ingress and egress over a tract of land located in the NW 1/4 of Section 19, T15N,,R12E of the 6th P.M., Douglas County, Nebraska described as follows: Commencing at the NE corner of the NW 1/4 of said Section 19; thence S 0° 00' 05" E (assumed bearing) on the East line of said NW 1/4, 60.0 feet; thence S 89° 34' 55" W on a line 60.0 feet South of and parallel to the North line of said NW 1/4, 117.00 feet to the point of beginning; thence continuing S 89° 34' 55" W on a line 60.00 feet South of and parallel to the North line of said NW 1/4, 50.00 feet; thence S 0° 25' 05" E, 25.00 feet; thence N 89° 34' 55" E on a line 85.00 feet South of and parallel to the North line of said NW 1/4; a distance of 50.00 feet; thence N 0° 25' 05" W, 25.00 feet to the Point of Beginning.

Grantee: L & A, Inc.

Grantor: BETH EL SYNAGOGUE

Attorney
Richard A. Dikeman
 President

ENTERED IN NUMERICAL INDEX AND RECORDED IN THE REGISTER OF DEEDS OFFICE IN DOUGLAS COUNTY, NEBRASKA
 7.6 DAY OF April 1973 AT 11:29A.M. C. HAROLD OSTLER, REGISTER OF DEEDS 3.25