

WESTWOOD HEIGHTS - 12TH ADDITION
TENTATIVE PLAT APPROVED

SCALE 1"=100'



WESTWOOD HEIGHTS
12TH ADDITION

THESE LOTS ARE LOCATED IN PART OF THE SW 1/4 AND PART OF THE NE 1/4 OF SECTION 21, TOWNSHIP 15 NORTH, RANGE 16 EAST OF THE 6TH PRINCIPAL MERIDIAN, DODGE COUNTY, IOWA.

LOTS BY THRU ACQUISITION

COUNTY TREASURER'S CERTIFICATE
THIS TO CERTIFY THAT I HAVE NO RECORD OF ANY TAXES DUE OR DELINQUENT AGAINST THE ABOVE DESCRIBED LOTS IN THE SAID COUNTY RECORDS AND I HAVE BEEN ADVISED BY THE COUNTY CLERK THAT THE SAID TAXES ARE PAID AS SHOWN BY THE RECORDS OF THIS COUNTY.

DATE: 5/11/66
COUNTY TREASURER

GRADING ACKNOWLEDGEMENT

I HEREBY CERTIFY THAT THE STREETS WITHIN WESTWOOD HEIGHTS 12TH ADDITION WERE GRADED TO THE FULL WIDTH OF THE DEDICATED RIGHT-OF-WAY TO AN APPROVED GRADE OF THE CITY ENGINEER.

DATE: 5-11-66
REGISTERED ENGINEER

APPROVAL OF CITY ENGINEER OF OMAHA
I HEREBY APPROVE OF THIS PLAT OF WESTWOOD HEIGHTS 12TH ADDITION ON THIS DAY OF MAY, A.D. 1966.

A. GARD
CITY ENGINEER

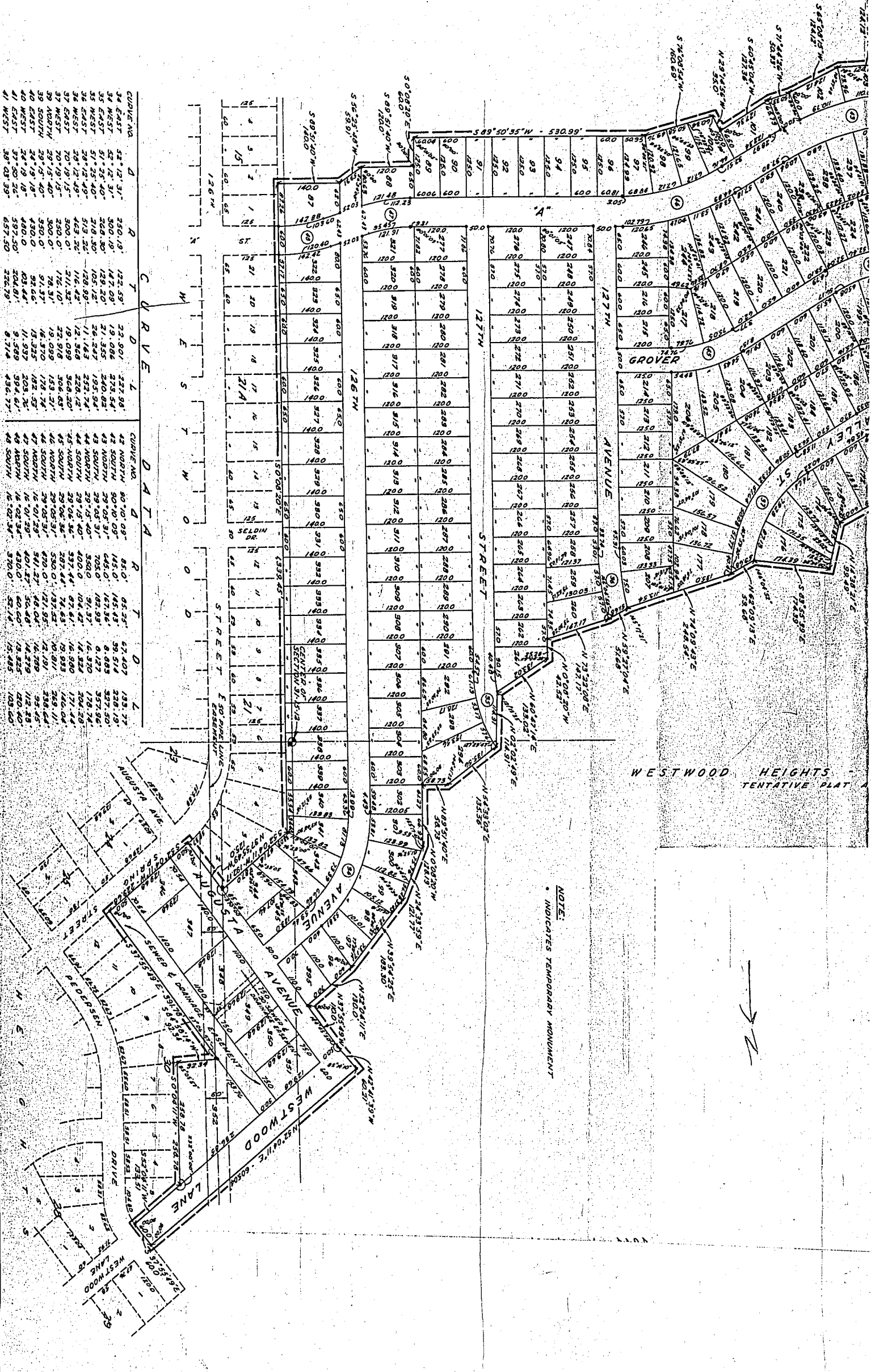
APPROVAL OF OMAHA CITY PLANNING BOARD
THIS PLAT OF WESTWOOD HEIGHTS 12TH ADDITION WAS APPROVED BY THE OMAHA CITY PLANNING BOARD ON THIS DAY OF MAY, A.D. 1966.

Charles W. D. ...
CHAIRMAN OMAHA CITY PLANNING BOARD

APPROVAL OF OMAHA CITY COUNCIL
THIS PLAT OF WESTWOOD HEIGHTS 12TH ADDITION WAS APPROVED BY THE OMAHA CITY COUNCIL ON THIS DAY OF MAY, A.D. 1966.

...
CITY CLERK





CURVE DATA

CURVE NO.	D	R	T	D	R	T	D	R	T	D	R	T	D	R	T
34 EAST	53.12	31.1	250.19	122.59	23.901	277.98	42 NORTH	90.01	09.8	185.0	95.35	57.407	133.77		
35 WEST	53.12	31.1	300.18	127.09	19.086	270.54	43 SOUTH	90.01	09.8	185.0	95.35	59.514	132.19		
36 EAST	51.35	40.0	268.80	121.20	21.585	280.82	44 NORTH	29.05	31.7	705.0	167.96	8.427	327.50		
37 WEST	51.35	40.0	218.30	105.12	20.249	251.51	45 SOUTH	29.05	31.7	705.0	167.96	8.427	327.50		
38 EAST	28.12	49.0	519.32	108.12	11.828	221.17	46 NORTH	29.05	31.7	705.0	167.96	8.427	327.50		
39 WEST	28.12	49.0	443.12	104.99	11.828	221.17	47 SOUTH	29.05	31.7	705.0	167.96	8.427	327.50		
40 EAST	20.19	15.1	320.01	74.31	15.089	304.20	48 NORTH	29.05	31.7	705.0	167.96	8.427	327.50		
41 WEST	20.19	15.1	320.01	74.31	15.089	304.20	49 SOUTH	29.05	31.7	705.0	167.96	8.427	327.50		
42 EAST	24.19	18.1	430.01	93.64	15.325	402.57	50 NORTH	16.01	29.7	541.27	46.04	14.279	112.25		
43 WEST	24.19	18.1	430.01	93.64	15.325	402.57	51 SOUTH	16.01	29.7	541.27	46.04	14.279	112.25		
44 EAST	37.49	26.1	597.50	124.81	9.589	394.81	52 NORTH	16.02	34.7	621.60	60.60	120.40	105.60		
45 WEST	37.49	26.1	597.50	124.81	9.589	394.81	53 SOUTH	16.02	34.7	621.60	60.60	120.40	105.60		

NOTE:
* INDICATES TEMPORARY MONUMENT

WESTWOOD HEIGHTS
TENTATIVE PLAT

SURVEYOR'S CERTIFICATE

I CERTIFY THAT WE HAVE MADE A GROUND SURVEY OF THE SUBDIVISION DESCRIBED HEREIN, ^{AND THAT TEMPORARY MONUMENTS HAVE BEEN PLACED AS SHOWN ON THE WITHIN PLAT} AND THAT A BOND HAS BEEN FURNISHED TO THE CITY OF OMAHA IN ORDER TO INSURE THE PLACING OF PERMANENT MONUMENTS AND STAKES. SAID SUBDIVISION IS KNOWN AS WESTWOOD HEIGHTS 14TH ADDITION AND IS LOCATED IN PART OF THE N.W. $\frac{1}{4}$, PART OF THE S.W. $\frac{1}{4}$, PART OF THE S.E. $\frac{1}{4}$, AND PART OF THE N.E. $\frac{1}{4}$ OF SEC. 31, T-15-N, R-12-E OF THE 6TH P.M., DOUGLAS COUNTY, NEBRASKA MORE PARTICULARLY DESCRIBED AS FOLLOWS:

COMMENCING AT THE N.W. CORNER OF SECTION 31; THENCE S 0°00'44"W (ASSUMED BEARING) A DISTANCE OF 2797.04 FEET; THENCE N 89°50'35"E A DISTANCE OF 360.0 FEET TO THE POINT OF BEGINNING; THENCE N 30°45'28"E A DISTANCE OF 180.07 FEET; THENCE S 53°18'09"E A DISTANCE OF 325.44 FEET; THENCE S 65°18'45"E A DISTANCE OF 286.26 FEET; THENCE S 07°05'27"W A DISTANCE OF 106.70 FEET; THENCE S 00°00'44"W A DISTANCE OF 115.63 FEET; THENCE S 89°59'16"E A DISTANCE OF 114.61 FEET; THENCE N 63°54'35"E A DISTANCE 210.98 FEET; THENCE N 14°38'21"E A DISTANCE OF 99.49 FEET; THENCE S 83°55'39"E A DISTANCE OF 174.39 FEET; THENCE N 62°09'13"E A DISTANCE OF 59.68 FEET; THENCE N 74°09'43"E A DISTANCE OF 248.54 FEET; THENCE N 59°27'04"E A DISTANCE OF 51.68 FEET; THENCE N 73°22'08"E A DISTANCE OF 147.17 FEET; THENCE N 00°08'20"W A DISTANCE OF 42.52 FEET; THENCE N 60°47'14"E A DISTANCE OF 133.02 FEET; THENCE N 02°02'49"E A DISTANCE OF 114.91 FEET; THENCE N 54°33'02"E A DISTANCE OF 135.56 FEET; THENCE N 89°51'40"E A DISTANCE OF 58.73 FEET; THENCE N 00°08'20"W A DISTANCE OF 128.19 FEET; THENCE N 24°33'59"E A DISTANCE OF 121.77 FEET; THENCE N 39°54'25"E A DISTANCE OF 183.30 FEET; THENCE N 52°04'11"E A DISTANCE OF 130.0 FEET; THENCE N 37°55'49"W A DISTANCE OF 110.0 FEET; THENCE N 42°41'39"W A DISTANCE OF 60.21 FEET; THENCE N 52°04'11"E A DISTANCE OF 605.04 FEET; THENCE S 37°55'49"E A DISTANCE OF 60.0 FEET; THENCE S 52°04'11"W A DISTANCE OF 133.51 FEET; THENCE S 00°04'11"W A DISTANCE OF 258.78 FEET; THENCE S 84°58'14"W A DISTANCE OF 92.34 FEET; THENCE S 37°55'49"E A DISTANCE OF 391.78 FEET; THENCE S 52°04'11"W A DISTANCE OF 229.68 FEET; THENCE N 37°55'49"W A DISTANCE OF 125.0 FEET; THENCE S 52°04'11"W A DISTANCE OF 192.17 FEET; THENCE S 00°08'20"E A DISTANCE OF 1339.45 FEET; THENCE S 89°51'40"W A DISTANCE OF 140.0 FEET; THENCE S 56°25'48"W A DISTANCE OF 59.91 FEET; THENCE S 89°51'40"W A DISTANCE OF 120.0 FEET; THENCE S 00°08'20"E A DISTANCE OF 60.0 FEET; THENCE S 89°50'35"W A DISTANCE OF 530.99 FEET; THENCE S 76°08'54"W A DISTANCE OF 160.69 FEET; THENCE N 29°14'56"W A DISTANCE OF 35.0 FEET; THENCE S 60°45'04"W A DISTANCE OF 127.36 FEET; THENCE S 71°44'26"W A DISTANCE OF 50.33 FEET; THENCE S 65°08'15"W A DISTANCE OF 124.12 FEET; THENCE S 87°12'39"W A DISTANCE OF 124.12 FEET; THENCE S 65°12'08"W A DISTANCE OF 53.93 FEET; THENCE S 87°12'39"W A DISTANCE OF 134.43 FEET; THENCE S 00°09'25"E A DISTANCE OF 43.74 FEET; THENCE S 89°50'35"W A DISTANCE OF 430.03 FEET; THENCE N 45°04'21"W A DISTANCE OF 225.94 FEET; THENCE N 00°00'44"E A DISTANCE OF 1142.03 FEET TO THE POINT OF BEGINNING.

DATE: May 7, 1962

GOLLEHON & SCHEMMER, INC.
ENGINEERS - PLANNERS

William A. Gollehon
REGISTERED LAND SURVEYOR
L.S. 175



DEDICATION

KNOW ALL MEN BY THESE PRESENTS: THAT ROYALWOOD ESTATES, INC., A NEBRASKA CORPORATION, MILLARD R. SELDIN AND BEVERLY SELDIN HUSBAND AND WIFE BEING SOLE OWNERS AND PROPRIETORS OF THE LAND DESCRIBED IN THE SURVEYOR'S CERTIFICATE AND EMBRACED WITHIN THIS PLAT AND MAJOR APPLIANCE CO., A NEBRASKA CORPORATION, AUGUST F.R. SOHL AND LAURA SOHL, HUSBAND AND WIFE, ROY F. STENDER AND ANNA STENDER, HUSBAND AND WIFE, (MORTGAGEES) HAVE CAUSED THE SAME TO BE SUBDIVIDED INTO LOTS AND STREETS, SAID SUBDIVISION TO BE KNOWN AS WESTWOOD HEIGHTS 14TH ADDITION, THE LOTS NUMBERED AS SHOWN AND WE HEREBY RATIFY AND APPROVE OF THE DISPOSITION OF OUR PROPERTY AS SHOWN ON THIS PLAT, AND WE HEREBY DEDICATE TO THE PUBLIC FOR PUBLIC USE, THE STREETS SHOWN HEREIN. THE ABOVE OR FOREGOING SUBDIVISION LOCATED IN PART OF THE N.W. 1/4, PART OF THE S.W. 1/4, PART OF THE S.E. 1/4 AND PART OF THE N.E. 1/4 OF SECTION 31, T-15-N, R-12-E AS APPEARING ON THIS PLAT, IS MADE WITH FREE CONSENT AND IN ACCORDANCE WITH THE DESIRE OF THE UNDERSIGNED OWNERS AND PROPRIETORS.

IN WITNESS WHEREOF WE DO HEREUNTO SET OUR HAND THIS 10th DAY OF May A.D. 1962.

Millard R. Seldin
MILLARD R. SELDIN

Beverly Seldin
BEVERLY SELDIN

August F.R. Sohl
AUGUST F.R. SOHL

Laura L. Sohl
LAURA L. SOHL

Roy F. Stender
ROY F. STENDER

Anna E. Stender
ANNA E. STENDER

ROYALWOOD ESTATES, INC.

Millard R. Seldin
MILLARD R. SELDIN, PRESIDENT

Theodore M. Seldin
SECRETARY

MAJOR APPLIANCE CO.

M.S. Livingston
M.S. LIVINGSTON, PRESIDENT

[Signature]
SECRETARY

ACKNOWLEDGEMENT OF NOTARY

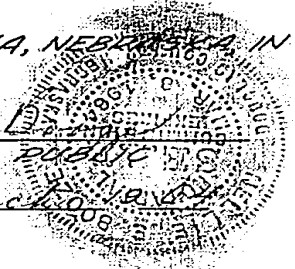
STATE OF NEBRASKA }
COUNTY OF DOUGLAS } S.S.

ON THIS 10th DAY OF May A.D. 1962, BEFORE A NOTARY PUBLIC, DULY COMMISSIONED AND QUALIFIED IN AND FOR SAID COUNTY, PERSONALLY CAME MILLARD R. SELDIN, PRESIDENT OF ROYALWOOD ESTATES, INC. AND M.S. LIVINGSTON, PRESIDENT OF MAJOR APPLIANCE CO, PERSONALLY KNOWN TO ME TO BE THE IDENTICAL PERSONS WHO EXECUTED THE FOREGOING DEDICATION AND THEY ACKNOWLEDGED THAT THEY EXECUTED SAID DEDICATION AS THEIR VOLUNTARY ACT AND DEED AS SUCH OFFICERS AND AS THE VOLUNTARY ACT AND DEED OF SAID CORPORATIONS; AND FURTHER CAME BEFORE ME MILLARD R. SELDIN, BEVERLY SELDIN, AUGUST F.R. SOHL, ANNA L. SOHL, ROY F. STENDER AND ANNA E. STENDER TO ME KNOWN TO BE THE IDENTICAL PERSONS WHO EXECUTED THE FOREGOING DEDICATION AND THEY ACKNOWLEDGED THAT THEY EXECUTED SAID DEDICATION AS THEIR VOLUNTARY ACT AND DEED.

WITNESS MY HAND AND NOTARIAL SEAL AT OMAHA, NEBRASKA IN SAID COUNTY THE DATE LAST AFORESAID.

Neena E. [Signature]
NOTARY PUBLIC

MY COMMISSION EXPIRES ON THE 8th DAY OF March 1963



53 FILED IN NUMERICAL INDEX AND RECORDED IN THE REGISTER OF DEEDS OFFICE IN DOUGLAS COUNTY, NEBRASKA
3 DAY August 1962 AT 4:25 P.M. THOMAS J. O'CONNOR, REGISTER OF DEEDS 1975

PREPARED BY:
GOLLEHON & SCHEMMER, INC.
ENGINEERS - PLANNERS
4660 SO. 60TH AVE. - OMAHA, NEBR.

FOR:
ROYALWOOD ESTATES, INC.
OMAHA, NEBRASKA

DOUGLAS COUNTY
SURVEYOR'S OFFICE
[Signature]