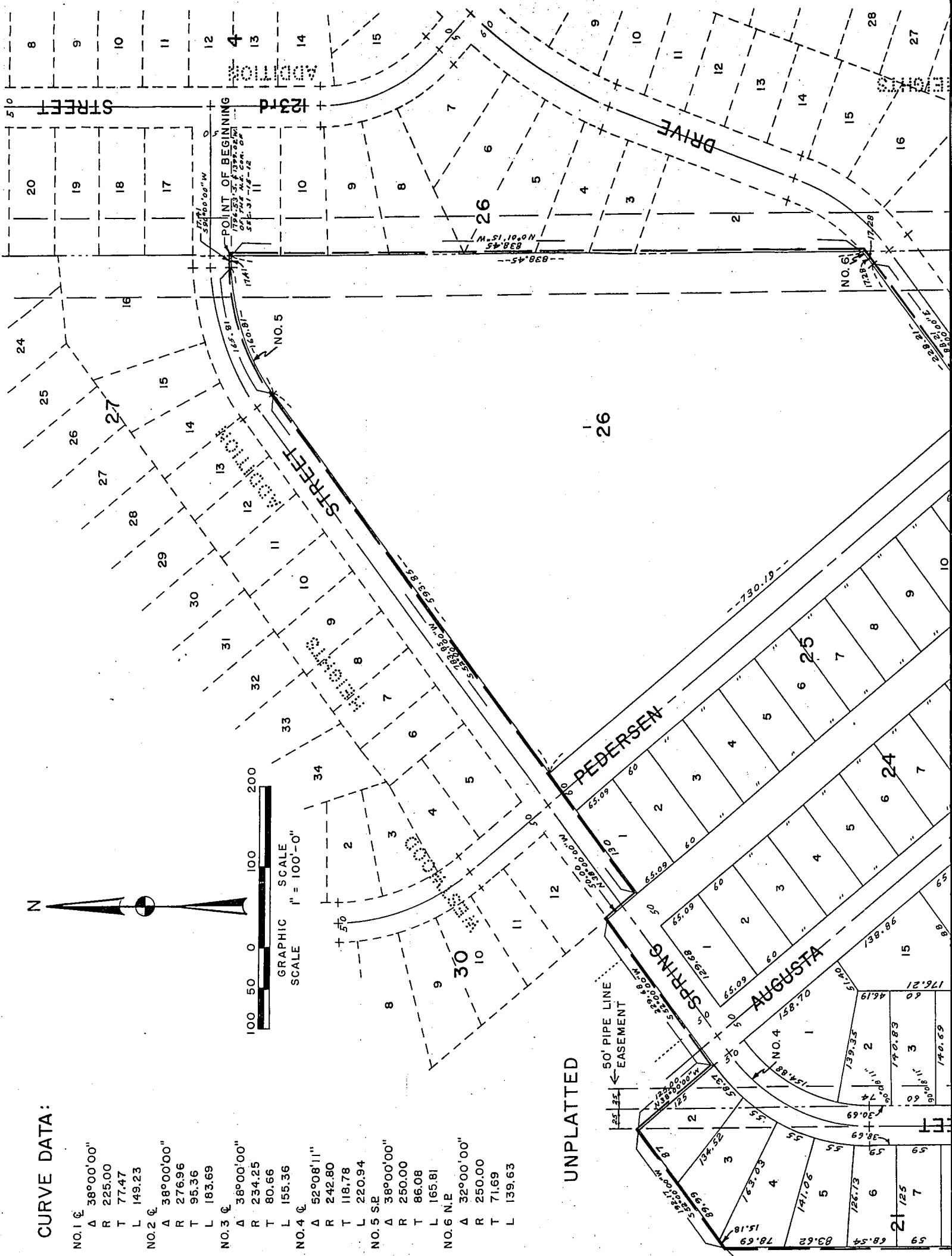


WESTWOOD HEIGHTS ADDITION

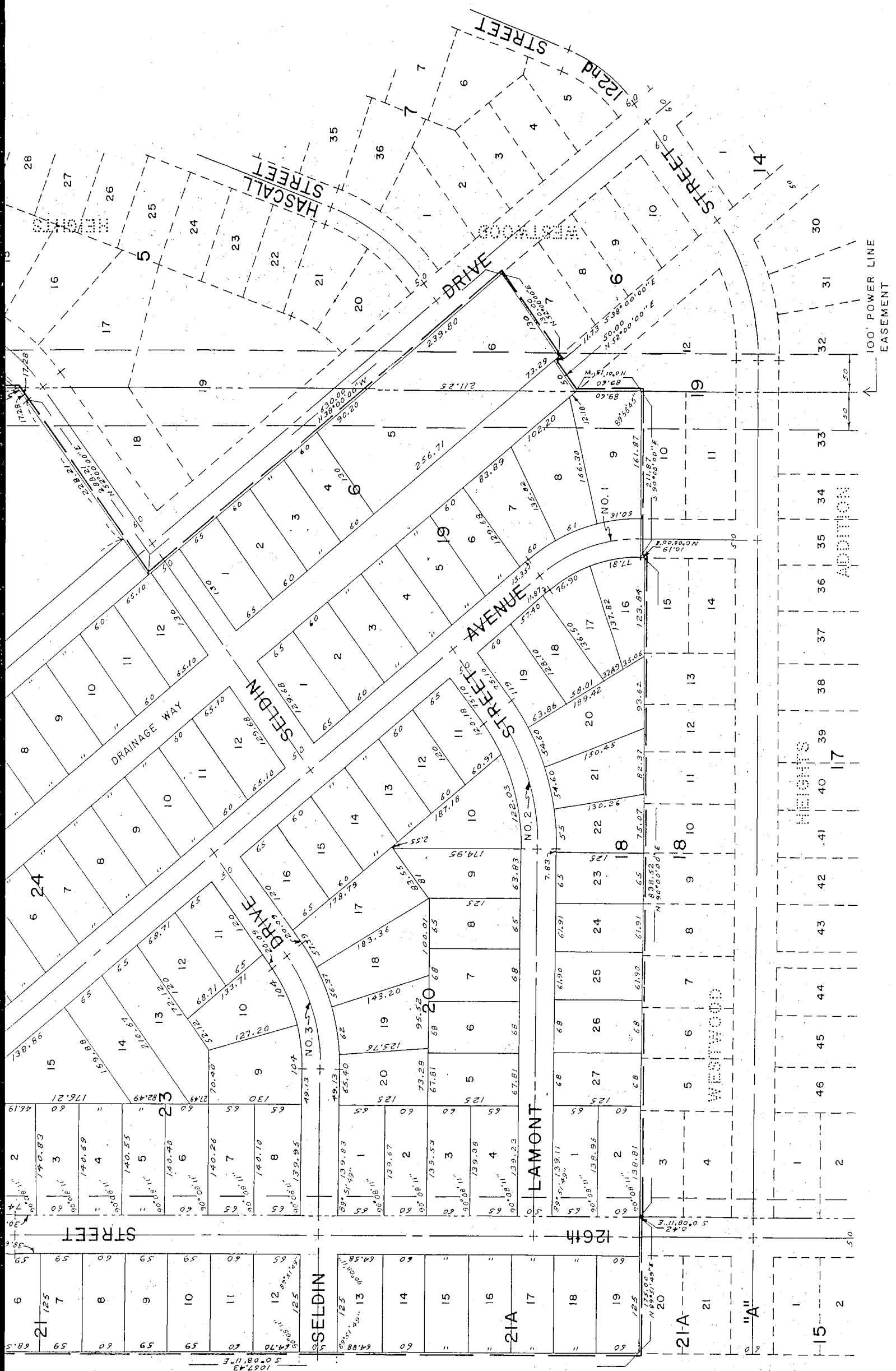
BLOCKS 20, 23, 24 AND 25, LOTS 1 TO 6 INCLUSIVE, BLOCK 6, LOTS 1 AND 2 AND LOTS 16 TO 27 INCLUSIVE, BLOCK 18, LOTS 1 TO 9 INCLUSIVE, BLOCK 19, LOTS 2 TO 12 INCLUSIVE, BLOCK 21, LOTS 13 TO 19 INCLUSIVE, BLOCK 21A AND LOT 1, BLOCK 26.

A SUBDIVISION OF A PART OF THE E.1/2 OF SEC. 31, T.15 N., R.12 E. OF THE 6TH P.M. ALL IN DOUGLAS COUNTY, NEBRASKA.



CURVE DATA:

- NO. 1 C
A 38°00'00"
R 225.00
T 77.47
L 149.23
- NO. 2 C
A 38°00'00"
R 276.96
T 95.36
L 183.69
- NO. 3 C
A 38°00'00"
R 234.25
T 80.66
L 155.36
- NO. 4 C
A 52°08'11"
R 242.80
T 118.78
L 220.94
- NO. 5 SE
A 38°00'00"
R 250.00
T 86.08
L 165.81
- NO. 6 NE
A 32°00'00"
R 250.00
T 71.69
L 139.63



UNPLATTED

SURVEYOR'S CERTIFICATE

THIS IS TO CERTIFY THAT I HAVE ACCURATELY SURVEYED AND STAKED WITH IRON PIPES ALL CORNERS OF ALL LOTS, BLOCKS, STREETS, AVENUES, DRIVES, DRAINAGE WAYS, ANGLE POINTS AND THE ENDS OF ALL CURVES IN THIS PLAT OF WESTWOOD HEIGHTS ADDITION, ALL OF BLOCKS 20, 23, 24 AND 25; LOTS 1 TO 6 INCLUSIVE, BLOCK 6; LOTS 1 AND 2 AND LOTS 16 TO 27, ^{INCLUSIVE} BLOCK 18; LOTS 1 TO 9 INCLUSIVE, BLOCK 19, LOTS 2 TO 12 INCLUSIVE, BLOCK 21; LOTS 13 TO 19 INCLUSIVE, BLOCK 21A AND LOT 1, BLOCK 26 AND THAT SAID LAND IS A PLATTING OF THAT PART OF THE EAST HALF (E½) OF SECTION 31, TOWNSHIP 15 NORTH, RANGE 12 EAST OF THE 6TH PRINCIPAL MERIDIAN ALL IN DOUGLAS COUNTY, NEBRASKA, MORE PARTICULARLY DESCRIBED AND BOUNDED AS FOLLOWS:

BEGINNING AT A POINT WHICH IS THE NORTHWEST CORNER OF LOT 11, BLOCK 26, WESTWOOD HEIGHTS, AN ADDITION AS SURVEYED, PLATTED AND RECORDED, SAID POINT BEING 1796.53 FEET SOUTH AND 1399.02 FEET WEST OF THE NORTHEAST CORNER OF SECTION 31, TOWNSHIP 15 NORTH, RANGE 12 EAST OF THE 6TH PRINCIPAL MERIDIAN IN DOUGLAS COUNTY, NEBRASKA, THENCE ON A BEARING OF S 90°00'00" W AND RUNNING A DISTANCE OF 17.41 FEET TO A POINT WHICH IS THE POINT OF CURVE OF A CURVE TO THE LEFT HAVING A RADIUS OF 250.00 FEET AND A CENTRAL ANGLE OF 33°00'00", THENCE RUNNING SOUTHWESTERLY ALONG SAID CURVE A DISTANCE OF 165.81 FEET TO A POINT WHICH IS THE POINT OF TANGENT OF SAID CURVE, THENCE ON A BEARING OF S 52°00'00" W AND RUNNING A DISTANCE OF 783.85 FEET TO A POINT; THENCE ON A BEARING OF N 38°00'00" W AND RUNNING A DISTANCE OF 50 FEET TO A POINT; THENCE ON A BEARING OF S 52°00'00" W AND RUNNING A DISTANCE OF 229.68 FEET TO A POINT; THENCE ON A BEARING OF N 38°00'00" W AND RUNNING A DISTANCE OF 125.00 FEET TO A POINT; THENCE ON A BEARING OF S 52°00'00" W AND RUNNING A DISTANCE OF 192.17 FEET TO A POINT; THENCE ON A BEARING OF S 0°08'11" E AND RUNNING A DISTANCE OF 1067.43 FEET TO A POINT; THENCE ON A BEARING OF N 89°51'49" E AND RUNNING A DISTANCE OF 175.00 FEET TO A POINT; THENCE ON A BEARING OF S 0°08'11" E AND RUNNING A DISTANCE OF 0.42 FEET TO A POINT; THENCE ON A BEARING OF N 90°00'00" E AND RUNNING A DISTANCE OF 838.52 FEET TO A POINT; THENCE ON A BEARING OF N 0°00'00" E AND RUNNING A DISTANCE OF 10.19 FEET TO A POINT; THENCE ON A BEARING OF S 90°00'00" E AND RUNNING A DISTANCE OF 211.87 FEET TO A POINT; THENCE ON A BEARING OF N 0°01'15" W AND RUNNING A DISTANCE OF 89.60 FEET TO A POINT; THENCE ON A BEARING OF N 52°00'00" E AND RUNNING A DISTANCE OF 50.00 FEET TO A POINT; THENCE ON A BEARING OF S 38°00'00" E AND RUNNING A DISTANCE OF 11.73 FEET TO A POINT; THENCE ON A BEARING OF N 52°00'00" E AND RUNNING A DISTANCE OF 130.00 FEET TO A POINT; THENCE ON A BEARING OF N 38°00'00" W AND RUNNING A DISTANCE OF 630.00 FEET TO A POINT; THENCE ON A BEARING OF N 52°00'00" E AND RUNNING A DISTANCE OF 288.21 FEET TO A POINT, WHICH IS THE POINT OF TANGENT OF A CURVE TO THE LEFT HAVING A RADIUS OF 250.00 FEET AND A CENTRAL ANGLE OF 32°00'00", THENCE RUNNING NORTHEASTERLY ALONG SAID CURVE A DISTANCE OF 17.28 FEET TO A POINT; THENCE ON A BEARING OF N 0°01'15" W AND RUNNING A DISTANCE OF 838.45 FEET TO THE POINT OF BEGINNING; ASSUMING THE EAST LINE OF THE NORTHEAST QUARTER (NE¼) OF SAID SECTION 31, TO BE DUE NORTH-SOUTH.

IN WITNESS WHEREOF I DO HEREUNTO SET MY HAND AND SEAL THIS 26 DAY OF August, A.D. 19 60.

Francis J. Naughton 15 #75
REGISTERED LAND SURVEYOR

HENNINGSON, DURHAM AND RICHARDSON, INC.
ARCHITECTS-ENGINEERS

DEDICATION

KNOW ALL MEN BY THESE PRESENTS, THAT MILLARD R. SELDIN, AN INDIVIDUAL, WESTWOOD HEIGHTS INC. AND GREEN ACRES REALTY INC. BEING SOLE OWNERS AND PROPRIETORS OF THE LAND DESCRIBED IN THE SURVEYOR'S CERTIFICATE AND EMBRACED WITHIN THIS PLAT HAVE CAUSED THE SAME TO BE SUBDIVIDED INTO LOTS, BLOCKS, STREETS, AVENUES, DRIVES AND DRAINAGE WAYS; SAID SUBDIVISION TO BE HEREAFTER KNOWN AS WESTWOOD HEIGHTS ADDITION. THE LOTS AND BLOCKS NUMBERED AS SHOWN AND WE HEREBY RATIFY AND APPROVE OF THE DISPOSITION OF OUR PROPERTY AS SHOWN AND WE HEREBY DEDICATE TO THE PUBLIC FOR PUBLIC USE THE STREETS, AVENUES, DRIVES AND DRAINAGE WAYS AS SHOWN.

IN WITNESS WHEREOF, WE DO HEREUNTO SET OUR HANDS AND CORPORATE SEALS THIS 26 DAY OF August, A.D. 19 60.

Millard R. Seldin
MILLARD R. SELDIN

WESTWOOD HEIGHTS INC.
BEN I. SELDIN
BEN I. SELDIN
PRESIDENT

Millard R. Seldin
MILLARD R. SELDIN
SECRETARY

GREEN ACRES REALTY INC.
Millard R. Seldin
MILLARD R. SELDIN
SECRETARY

ACKNOWLEDGEMENT

STATE OF NEBRASKA
COUNTY OF DOUGLAS

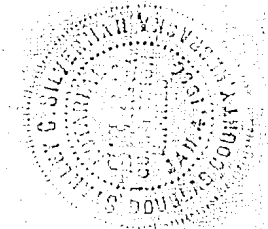
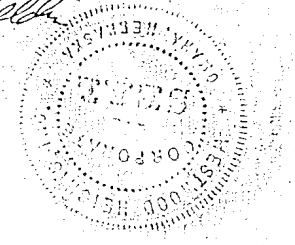
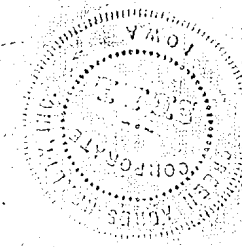
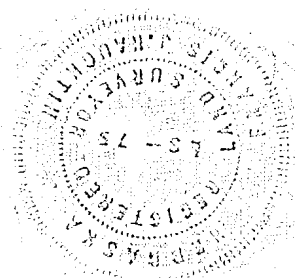
SS

ON THIS 26 DAY OF August, A.D. 19 60 BEFORE ME, A NOTARY PUBLIC, DULY COMMISSIONED IN AND FOR SAID COUNTY, CAME BEN I. SELDIN AND MILLARD R. SELDIN WHO ARE PERSONALLY KNOWN BY ME TO BE THE SAME IDENTICAL PERSONS WHOSE NAMES ARE AFFIXED TO THE ABOVE DEDICATION AS PRESIDENT AND SECRETARY OF WESTWOOD HEIGHTS INC., AS PRESIDENT AND SECRETARY OF GREEN ACRES REALTY INC. AND AS AN INDIVIDUAL AND THEY ACKNOWLEDGE THE SIGNING OF SAID DEDICATION TO BE THEIR VOLUNTARY ACTS AND DEEDS AND THE VOLUNTARY ACTS AND DEEDS OF WESTWOOD HEIGHTS INC. AND GREEN ACRES REALTY INC.

WITNESS MY HAND AND SEAL AT OMAHA, NEBRASKA, IN SAID COUNTY THE DATE LAST AFORESAID.

MY COMMISSION EXPIRES ON THE 4 DAY OF Jan, A.D. 19 64.

Stanley C. Kiveman
NOTARY PUBLIC



KNOW ALL MEN BY THESE PRESENTS: THAT MAJOR APPLIANCE COMPANY, A NEBRASKA CORPORATION, MORTGAGEE UNDER THE MORTGAGES DATED JUNE 16, 1958; MARCH 24, 1959 AND MAY 26, 1960 AND RECORDED IN BOOK 1286, PAGE 313; BOOK 1312, PAGE 541 AND BOOK 1350, PAGE 350 OF THE MORTGAGE RECORDS OF DOUGLAS COUNTY, NEBRASKA AND EMBRACED WITHIN THIS PLAT OF WESTWOOD HEIGHTS ADDITION, DOES HEREBY CONSENT TO AND APPROVE THE PLATTING OF SAID LAND AS SHOWN ON THIS PLAT AND DOES HEREBY RELEASE SAID MORTGAGES ON THE LAND COVERED BY AND EMBRACED WITHIN THE STREETS, AVENUES, DRIVES AND DRAINAGE WAYS DEDICATED TO THE PUBLIC AS SHOWN ON THIS PLAT WITHOUT PREJUDICE TO THE LIEN OF THE MORTGAGE ON THE BALANCE OF THE LAND DESCRIBED THEREIN.

MAJOR APPLIANCE COMPANY

BY: M. S. LIVINGSTON, PRESIDENT

ATTEST: W.J. RADA, SECRETARY

STATE OF NEBRASKA SS
COUNTY OF DOUGLAS

ON THIS 26 DAY OF August, A.D. 19 60. BEFORE ME, A NOTARY PUBLIC, DULY COMMISSIONED AND QUALIFIED IN AND FOR SAID COUNTY, CAME M.S. LIVINGSTON AND J.J. RADA WHO ARE PERSONALLY KNOWN BY ME TO BE THE SAME IDENTICAL PERSONS WHOSE NAMES ARE AFFIXED TO ABOVE MORTGAGE RELEASE AS PRESIDENT AND SECRETARY OF MAJOR APPLIANCE COMPANY, A NEBRASKA CORPORATION, AND THEY ACKNOWLEDGE THE EXECUTION THEREOF TO BE THEIR VOLUNTARY ACTS AND DEEDS AND THE VOLUNTARY ACT AND DEED OF SAID MAJOR APPLIANCE COMPANY

WITNESS MY HAND AND SEAL AT OMAHA, NEBRASKA, IN SAID COUNTY, THIS 26 DAY OF August, A.D. 1960.
MY COMMISSION EXPIRES THE 1 DAY OF Jan, A.D. 1961.

NOTARY PUBLIC.

THIS IS TO CERTIFY THAT I FIND NO REGULAR OR SPECIAL TAXES DUE OR DELINQUENT AGAINST THE PROPERTY DESCRIBED IN THE SURVEYOR'S CERTIFICATE AND EMBRACED WITHIN THIS PLAT AS SHOWN BY THE RECORDS OF THIS OFFICE

DATE:

COUNTY TREASURER, DOUGLAS COUNTY

I HEREBY APPROVE THIS PLATTING OF WESTWOOD HEIGHTS ADDITION ON THIS 13th DAY OF Sept., A.D. 1960.

CITY ENGINEER

APPROVAL OF CITY PLANNING BOARD
THIS PLATTING OF WESTWOOD HEIGHTS ADDITION WAS APPROVED BY THE PLANNING BOARD OF THE CITY OF OMAHA ON THIS 21 DAY OF SEPTEMBER, A.D. 19 60.

CHAIRMAN, CITY PLANNING BOARD

CITY COUNCIL ACCEPTANCE

THIS PLATTING OF WESTWOOD HEIGHTS ADDITION WAS APPROVED BY THE CITY COUNCIL OF THE CITY OF OMAHA, NEBRASKA ON THIS 18th DAY OF OCT, A.D. 19 65

PRESIDENT, CITY COUNCIL

ATTEST:

CITY CLERK

27.
ENTERED IN NUMERICAL INDEX AND RECORDED IN THE REGISTER OF DEEDS OFFICE IN DOUGLAS COUNTY, NEBRASKA
28. BY *dec* 1960 AT 3:00 PM. THOMAS J. O'CONNOR, REGISTER OF DEEDS

BOOK 1106 PAGE 105