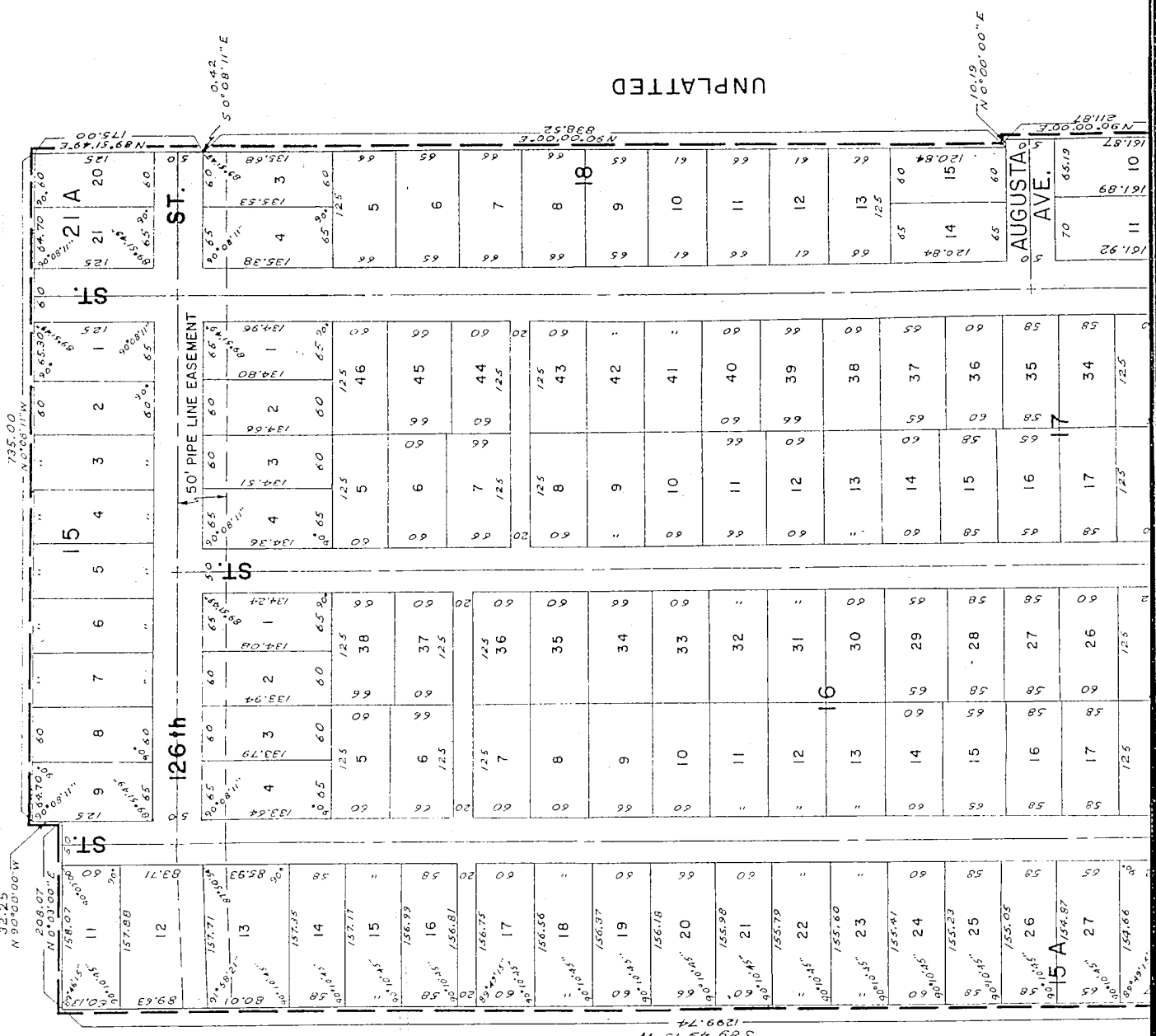


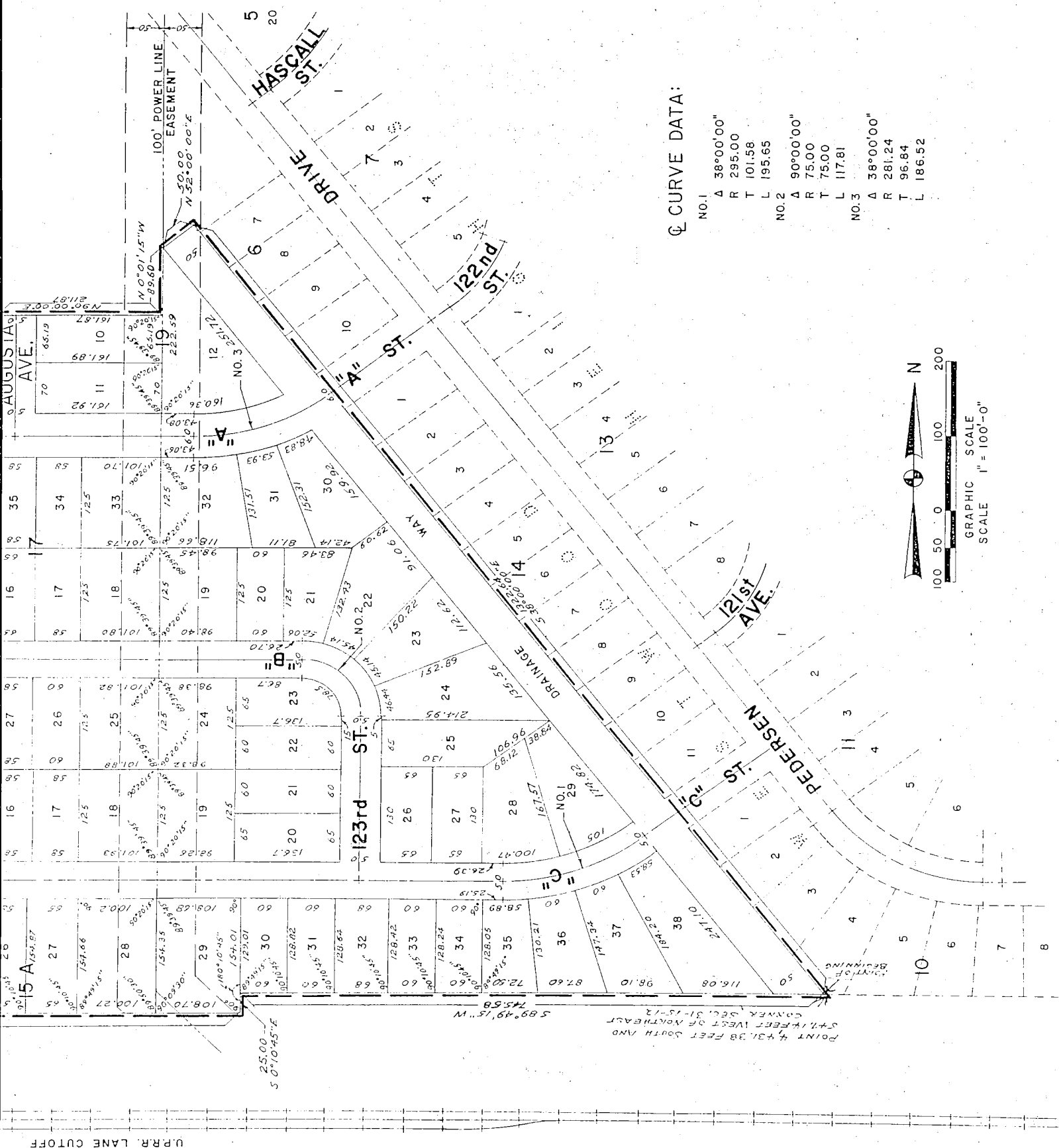
WESTWOOD HEIGHTS ADDITION

BLOCKS 16 AND 17; LOTS 1 TO 9 INCLUSIVE, BLOCK 15; LOTS 11 TO 38 INCLUSIVE, BLOCK 15A; LOTS 3 TO 15 INCLUSIVE, BLOCK 18; LOTS 10 TO 12 INCLUSIVE, BLOCK 19 AND LOTS 20 AND 21, BLOCK 21A. A SUBDIVISION OF A PART OF THE E. 1/2 OF SEC. 31, T.15N., R.12E. OF THE 6TH P.M. ALL IN DOUGLAS COUNTY, NEBRASKA.

UNPLATTED

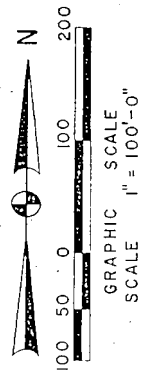


UNPLATTED



☉ CURVE DATA:

NO. 1	NO. 2	NO. 3
Δ 38°00'00"	Δ 90°00'00"	Δ 38°00'00"
R 295.00	R 75.00	R 281.24
T 101.58	T 75.00	T 96.84
L 195.65	L 117.81	L 186.52



U.P.R.R. LANE CUTOFF

POINT 431.38 FEET SOUTH AND 541.1 FEET WEST OF NORTHEAST CORNER SEC. 31-15-12

50°10'45"E
25.00

589°49'15"W

180°10'45"

154.01

154.35

157.66

154.87

154.87

154.87

154.87

154.87

154.87

154.87

154.87

154.87

154.87

154.87

154.87

154.87

154.87

154.87

154.87

154.87

154.87

154.87

154.87

154.87

154.87

154.87

154.87

154.87

154.87

154.87

154.87

154.87

154.87

154.87

154.87

154.87

154.87

154.87

154.87

154.87

154.87

154.87

154.87

154.87

154.87

154.87

154.87

154.87

154.87

154.87

154.87

154.87

154.87

154.87

154.87

154.87

154.87

154.87

154.87

154.87

154.87

154.87

154.87

154.87

154.87

154.87

154.87

154.87

154.87

154.87

154.87

154.87

SURVEYOR'S CERTIFICATE

THIS IS TO CERTIFY THAT I HAVE ACCURATELY SURVEYED AND STAKED WITH IRON PIPES ALL CORNERS OF ALL LOTS, BLOCKS, STREETS, AVENUES, DRAINAGE WAYS, ANGLE POINTS AND THE END OF ALL CURVES IN THIS PLAT OF WESTWOOD HEIGHTS ADDITION, BLOCKS 16 AND 17; LOTS 1 TO 9 INCLUSIVE, BLOCK 15; LOTS 11 TO 20 INCLUSIVE, BLOCK 13A; LOTS 3 TO 15 INCLUSIVE, BLOCK 13; LOTS 10 TO 12 INCLUSIVE, BLOCK 19 AND LOTS 20 AND 21, BLOCK 21A AND THAT SAID LAND IS A PLATING OF THAT PART OF THE EAST HALF (E½) OF SECTION 21, TOWNSHIP 15 NORTH, RANGE 12 EAST OF THE 6TH PRINCIPAL MERIDIAN ALL IN DOUGLAS COUNTY, NEBRASKA, MORE PARTICULARLY DESCRIBED AND BOUNDED AS FOLLOWS:

BEGINNING AT A POINT 4,431.38 FEET SOUTH AND 547.14 FEET WEST OF THE NORTHEAST CORNER OF SECTION 31, TOWNSHIP 15 NORTH, RANGE 12 EAST OF THE 6TH PRINCIPAL MERIDIAN, SAID POINT BEING A POINT ON THE NORTH PROPERTY LINE OF THE UNION PACIFIC RAILROAD LANE CUTOFF AT THE MOST SOUTHWESTERLY CORNER OF LOT 4, BLOCK 10, IN WESTWOOD HEIGHTS AN ADDITION TO DOUGLAS COUNTY NEBRASKA AS SURVEYED, PLATTED AND RECORDED; THENCE ASSUMING THE EAST PROPERTY LINE OF SAID SECTION 31 TO BE DUE NORTH AND SOUTH ON A BEARING OF S 89°49'15" W AND RUNNING A DISTANCE OF 745.58 FEET TO A POINT; THENCE ON A BEARING OF S 0°10'45" E AND RUNNING A DISTANCE OF 25.00 FEET TO A POINT; THENCE ON A BEARING OF S 89°49'15" W AND RUNNING A DISTANCE OF 1299.74 FEET TO A POINT ON THE NORTH PROPERTY LINE OF SAID UNION PACIFIC RAILROAD LANE CUTOFF 4323.61' NORTH-SOUTH CENTERLINE OF SAID SECTION 31; THENCE ON A BEARING OF N 0°03'00" E AND RUNNING A DISTANCE OF 208.07 FEET TO A POINT; THENCE ON A BEARING OF N 90°00'00" W AND RUNNING A DISTANCE OF 32.25 FEET TO A POINT; THENCE ON A BEARING OF N 0°08'11" W AND RUNNING A DISTANCE OF 735.00 FEET TO A POINT; THENCE ON A BEARING OF N 89°51'49" E AND RUNNING A DISTANCE OF 175.00 FEET TO A POINT; THENCE ON A BEARING OF S 0°08'11" E AND RUNNING A DISTANCE OF 0.42 FEET TO A POINT; THENCE ON A BEARING OF N 90°00'00" E AND RUNNING A DISTANCE OF 838.52 FEET TO A POINT; THENCE ON A BEARING OF N 0°00'00" E AND RUNNING A DISTANCE OF 10.19 FEET TO A POINT; THENCE ON A BEARING OF N 90°00'00" E AND RUNNING A DISTANCE OF 211.87 FEET TO A POINT; THENCE ON A BEARING OF N 0°01'15" W AND RUNNING A DISTANCE OF 89.60 FEET TO A POINT; THENCE ON A BEARING OF N 90°00'00" E AND RUNNING A DISTANCE OF 50.00 FEET TO A POINT; THENCE ON A BEARING OF S 38°00'00" E AND RUNNING A DISTANCE OF 1322.54 FEET TO THE POINT OF BEGINNING.

IN WITNESS WHEREOF I DO HERETO SET MY HAND AND SEAL THIS 1st DAY OF June, A.D. 1960.

Vern L. Hill
REGISTERED LAND SURVEYOR
HENNINGSON, DURHAM AND RICHARDSON, INC.
ARCHITECTS-ENGINEERS

DEDICATION

KNOW ALL MEN BY THESE PRESENTS: THAT MILLARD R. SELDIN, AN INDIVIDUAL, WESTWOOD HEIGHTS INC. AND GREEN ACRES REALTY INC. BEING SOLE OWNERS AND PROPRIETORS OF THE LAND DESCRIBED IN THE SURVEYOR'S CERTIFICATE AND EMBRACED WITHIN THIS PLAT HAVE CAUSED THE SAME TO BE SUBDIVIDED INTO LOTS, BLOCKS, STREETS, AVENUES AND DRAINAGE WAYS; SAID SUBDIVISION TO BE HEREAFTER KNOWN AS WESTWOOD HEIGHTS ADDITION, THE LOTS AND BLOCKS NUMBERED AS SHOWN AND WE HEREBY RATIFY AND APPROVE OF THE DISPOSITION OF OUR PROPERTY AS SHOWN AND WE HEREBY DEDICATE TO THE PUBLIC FOR PUBLIC USE THE STREETS, AVENUES AND DRAINAGE WAYS AS SHOWN.

IN WITNESS WHEREOF, WE DO HERETO SET OUR HANDS AND CORPORATE SEALS THIS 2nd DAY OF June, A.D. 1960.

Millard R. Seldin
MILLARD R. SELDIN

WESTWOOD HEIGHTS INC. GREEN ACRES REALTY INC.
Ben I. Seldin Millard R. Seldin Ben I. Seldin Millard R. Seldin
BEN I. SELDIN, PRESIDENT MILLARD R. SELDIN, SECRETARY BEN I. SELDIN, PRESIDENT MILLARD R. SELDIN, SECRETARY

ACKNOWLEDGEMENT

STATE OF NEBRASKA
COUNTY OF DOUGLAS
ON THIS 3rd DAY OF June, A.D. 1960, BEFORE ME, A NOTARY PUBLIC, DULY COMMISSIONED IN AND FOR SAID COUNTY, CAME BEN I. SELDIN AND MILLARD R. SELDIN WHO ARE PERSONALLY KNOWN BY ME TO BE THE SAME IDENTICAL PERSONS WHOSE NAMES ARE AFFIXED TO THE ABOVE DEDICATION AS PRESIDENT AND SECRETARY OF WESTWOOD HEIGHTS INC. AS PRESIDENT AND SECRETARY OF GREEN ACRES REALTY INC. AND AS AN INDIVIDUAL AND THEY ACKNOWLEDGE THE SIGNING OF SAID DEDICATION TO BE THEIR VOLUNTARY ACTS AND DEEDS AND THE VOLUNTARY ACTS AND DEEDS OF WESTWOOD HEIGHTS INC. AND GREEN ACRES REALTY INC.

WITNESS MY HAND AND SEAL AT OMAHA, NEBRASKA, IN SAID COUNTY THE DATE LAST FORESAID.

Carl F. Lentz
NOTARY PUBLIC

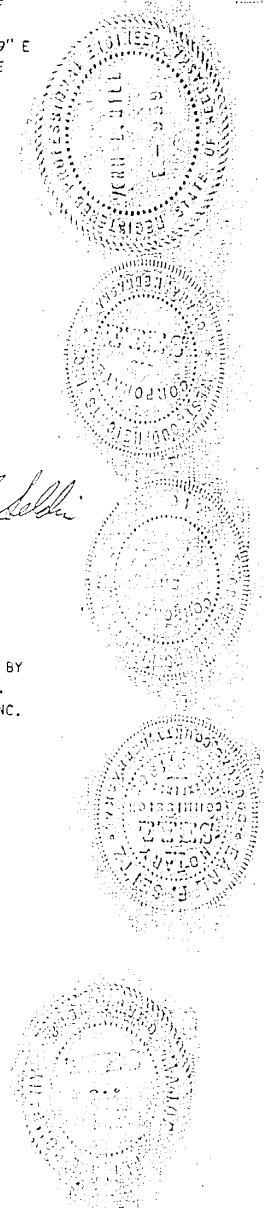
MY COMMISSION EXPIRES ON THE 9th DAY OF Feb, A.D. 1965.

MORTGAGE RELEASE

KNOW ALL MEN BY THESE PRESENTS: THAT MAJOR APPLIANCE COMPANY, A NEBRASKA CORPORATION, MORTGAGED UNDER THE MORTGAGES DATED JUNE 16, 1956; MARCH 24, 1959 AND MAY 26, 1960 AND RECORDED IN BOOK 1286, PAGE 313; BOOK 1312, PAGE 541 AND BOOK 1350, PAGE 350 OF THE MORTGAGE RECORDS OF DOUGLAS COUNTY, NEBRASKA AND EMBRACED WITHIN THIS PLAT OF WESTWOOD HEIGHTS ADDITION, DOES HEREBY CONSENT TO AND APPROVE THE PLATTING OF SAID LAND AS SHOWN ON THIS PLAT AND DOES HEREBY RELEASE SAID MORTGAGES ON THE LAND COVERED BY AND EMBRACED WITHIN THE STREETS, AVENUES AND DRAINAGE WAYS DEDICATED TO THE PUBLIC AS SHOWN ON THIS PLAT WITHOUT PREJUDICE TO THE LIEN OF THE MORTGAGE ON THE BALANCE OF THE LAND DESCRIBED THEREIN.

IN WITNESS WHEREOF, WE DO HERETO SET OUR HANDS AND CORPORATE SEAL THIS 3rd DAY OF June, A.D. 1960.

M. S. Livingston MAJOR APPLIANCE CO.
BY: M. S. LIVINGSTON, PRESIDENT ATTEST: J. J. Rada SECRETARY



STATE OF NEBRASKA
COUNTY OF DOUGLAS S S

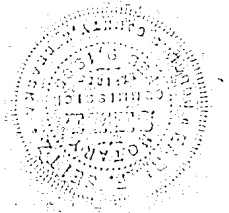
ACKNOWLEDGEMENT

ON THIS 3rd DAY OF June, A.D. 1960. BEFORE ME, A NOTARY PUBLIC, DULY COMMISSIONED AND QUALIFIED IN AND FOR SAID COUNTY CAME M.S. LIVINGSTON AND J.J. RADA, WHO ARE PERSONALLY KNOWN BY ME TO BE THE SAME IDENTICAL PERSONS WHOSE NAMES ARE AFFIXED TO ABOVE MORTGAGE RELEASE AS PRESIDENT AND SECRETARY OF MAJOR APPLIANCE COMPANY, A NEBRASKA CORPORATION, AND THEY ACKNOWLEDGE THE EXECUTION THEREOF TO BE THEIR VOLUNTARY ACTS AND DEEDS AND THE VOLUNTARY ACT AND DEED OF SAID MAJOR APPLIANCE COMPANY.

WITNESS MY HAND AND SEAL AT OMAHA, NEBRASKA, IN SAID COUNTY, THIS 3rd DAY OF June, A.D. 1960.

Carl F. Leitz
NOTARY PUBLIC

MY COMMISSION EXPIRES THE 9th Feb DAY OF Feb, A.D. 1965



COUNTY TREASURER'S CERTIFICATE

THIS IS TO CERTIFY THAT I FIND NO REGULAR OR SPECIAL TAXES DUE OR DELINQUENT AGAINST THE PROPERTY DESCRIBED IN THE SURVEYOR'S CERTIFICATE AND EMBRACED WITHIN THIS PLAT AS SHOWN BY THE RECORDS OF THIS OFFICE

DATE: June 3-1960

Sam J. Howell
COUNTY TREASURER DOUGLAS COUNTY
W. Livingston Deputy

APPROVAL OF CITY ENGINEER

I HEREBY APPROVE THIS PLATTING OF WESTWOOD HEIGHTS ADDITION ON THIS 24 DAY OF JUNE, A.D. 1960.

A. P. de Bol
CITY ENGINEER

APPROVAL OF CITY PLANNING BOARD

THIS PLATTING OF WESTWOOD HEIGHTS ADDITION WAS APPROVED BY THE PLANNING BOARD OF THE CITY OF OMAHA ON THIS 1 DAY OF July, A.D. 1960.

Jesse L. Schroeder
CHAIRMAN, CITY PLANNING BOARD

CITY COUNCIL ACCEPTANCE

THIS PLATTING OF WESTWOOD HEIGHTS ADDITION WAS APPROVED AND ACCEPTED BY THE CITY COUNCIL OF THE CITY OF OMAHA, NEBRASKA ON THIS 26 DAY OF July, A.D. 1960.

M. J. Jensen
PRESIDENT, CITY COUNCIL

ATTEST: M. J. Henningson
CITY CLERK

3 X. ORDER IN NEBRASKA THIS AND EQUIPMENT IN THE RECORDS OF THE CITY OF OMAHA, NEBRASKA. JUN 21 1960. RECORDED IN RECORDS OF DEEDS 3975

HENNINGSON, DURHAM & RICHARDSON INC. OMAHA, NEBR.
ARCHITECTS - ENGINEERS

1964 4-509