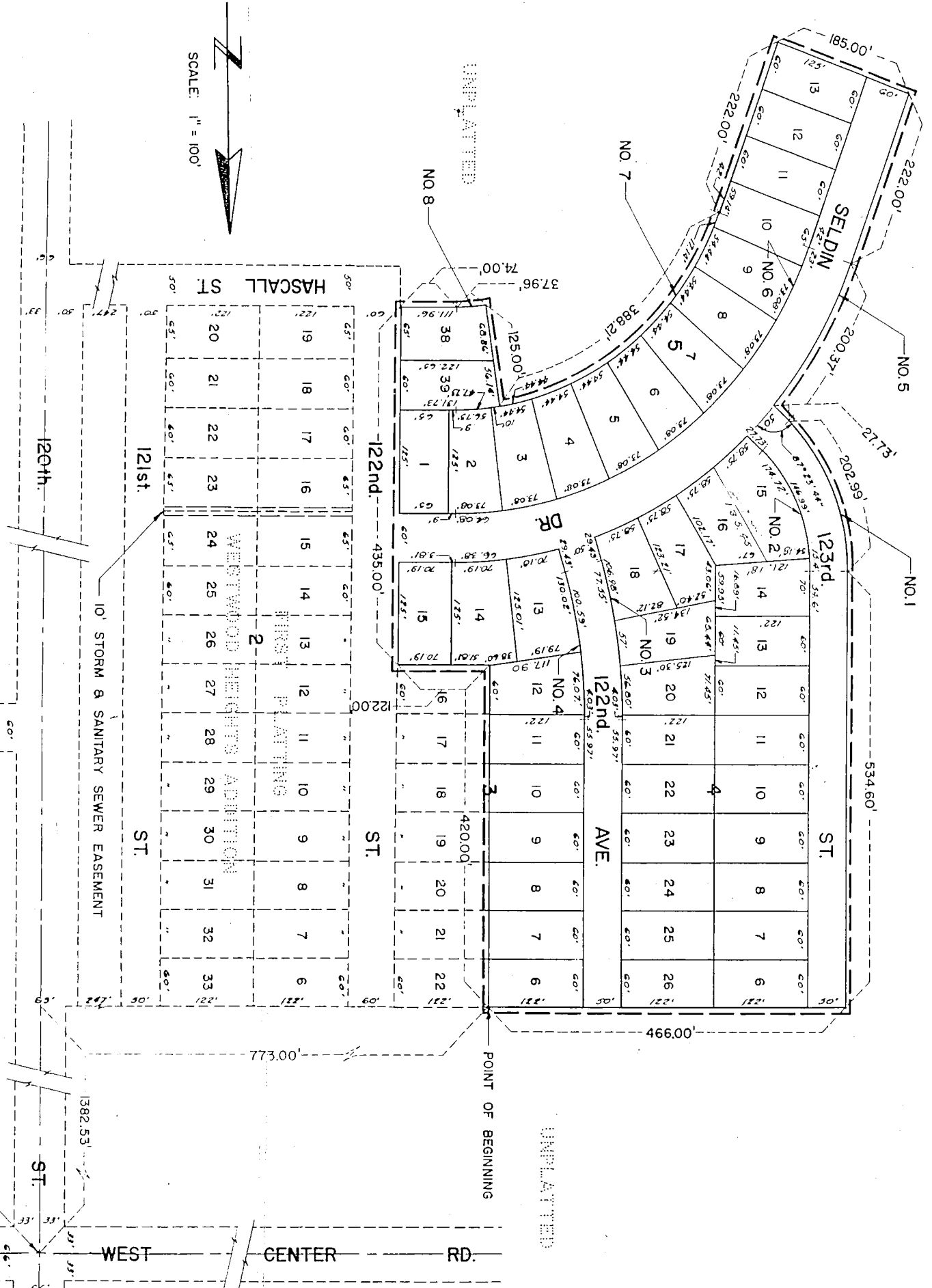
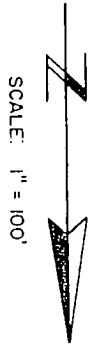


# WESTWOOD HEIGHTS

- LOTS 6 to 15 inclusive - BLOCK 3
- LOTS 6 to 26 inclusive - BLOCK 4
- LOTS 1 to 13 inclusive - BLOCK 5
- LOTS 38 to 39 inclusive - BLOCK 5

A SUBDIVISION OF A PART OF THE S.E. 1/4 OF THE N.E. 1/4  
 OF SECTION 31 TWP. 15N. RGE. 12E. OF THE 6TH. P.M.  
 ALL IN DOUGLAS COUNTY, NEBRASKA.



N.E. CORNER N.E. 1/4  
 SEC. 31 TWP. 15N. RGE. 12E.

UNPLATTED

UNPLATTED

# CURVE DATA

### CURVE NO. 1

$\Delta = 46^\circ 31' 20''$   
 $R = 250.00'$   
 $T = 107.47'$   
 $L = 202.99'$   
 $D = 22.918320^\circ$

### CURVE NO. 2

$\Delta = 46^\circ 31' 20''$   
 $R = 200.00'$   
 $T = 85.97'$   
 $L = 162.39'$   
 $D = 28.647900^\circ$

### CURVE NO. 3

$\Delta = 16^\circ 50' 00''$   
 $R = 665.00'$   
 $T = 98.39'$   
 $L = 195.38'$   
 $D = 8.615909^\circ$

### CURVE NO. 4

$\Delta = 16^\circ 50' 00''$   
 $R = 615.00'$   
 $T = 91.00'$   
 $L = 180.69'$   
 $D = 9.316390^\circ$

### CURVE NO. 5

$\Delta = 70^\circ 00' 00''$   
 $R = 550.00'$   
 $T = 385.12'$   
 $L = 671.95'$   
 $D = 10.417418^\circ$

### CURVE NO. 6

$\Delta = 70^\circ 00' 00''$   
 $R = 490.00'$   
 $T = 343.10'$   
 $L = 598.64'$   
 $D = 11.693020^\circ$

### CURVE NO. 7

$\Delta = 70^\circ 00' 00''$   
 $R = 365.00'$   
 $T = 255.58'$   
 $L = 445.93'$   
 $D = 15.697479^\circ$

### CURVE NO. 8

$\Delta = 9^\circ 03' 44''$   
 $R = 240.00'$   
 $T = 19.02'$   
 $L = 37.96'$   
 $D = 23.873250^\circ$

## COUNTY TREASURER'S CERTIFICATE

THIS IS TO CERTIFY THAT I FIND NO REGULAR OR SPECIAL TAXES DUE OR DELINQUENT AGAINST THE PROPERTY DESCRIBED IN THE SURVEYORS CERTIFICATE AND EMBRACED IN THIS PLAT AS SHOWN BY THE RECORDS OF THIS OFFICE.

  
 COUNTY TREASURER

DATE August 18 - 1958

## CITY COUNCIL ACCEPTANCE

THIS PLAT OF LOTS 6 TO 15 INCLUSIVE, BLOCK 3; LOTS 6 TO 26 INCLUSIVE, BLOCK 4; LOTS 1 TO 13 INCLUSIVE, BLOCK 5; AND LOTS 38 AND 39, BLOCK 5, ALL IN WESTWOOD HEIGHTS, WAS APPROVED AND ACCEPTED BY THE CITY COUNCIL OF THE CITY OF OMAHA, NEBRASKA, ON THIS 7<sup>th</sup> DAY OF OCTOBER 1958.

  
 PRESIDENT OF CITY COUNCIL

  
 ATTEST CITY CLERK

**APPROVAL OF CITY ENGINEER**

I HEREBY APPROVE THIS PLAT OF LOTS 6 TO 15 INCLUSIVE, BLOCK 3; LOTS 6 TO 26 INCLUSIVE, BLOCK 4; LOTS 1 TO 13, BLOCK 5; AND LOTS 38 AND 39, BLOCK 5, ALL IN WESTWOOD HEIGHTS; ON THIS 26 DAY OF AUGUST, 1958.

*D. P. DeBard*  
 Acting CITY ENGINEER

**APPROVAL OF CITY PLANNING BOARD**

THIS PLAT OF LOTS 6 TO 15 INCLUSIVE, BLOCK 3; LOTS 6 TO 26 INCLUSIVE, BLOCK 4; LOTS 1 TO 13 INCLUSIVE, BLOCK 5; AND LOTS 38 AND 39, BLOCK 5, ALL IN WESTWOOD HEIGHTS, WAS APPROVED BY THE PLANNING BOARD OF THE CITY OF OMAHA, ON THIS 8<sup>TH</sup> DAY OF SEPTEMBER, 1958.

*John Salomon*  
 CHAIRMAN, CITY PLANNING BOARD

**SURVEYOR'S CERTIFICATE**

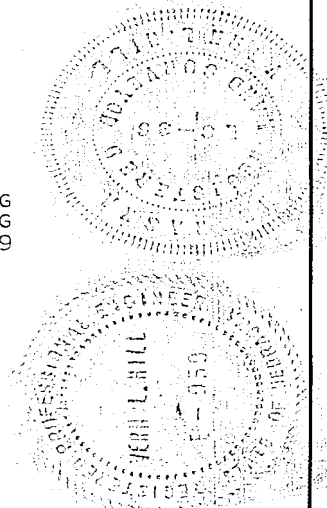
THIS IS TO CERTIFY THAT I HAVE ACCURATELY SURVEYED AND STAKED WITH IRON PIPE ALL CORNERS, LOTS, BLOCKS, STREETS, AVENUES, ANGLE POINTS AND ENDS OF CURVES IN THIS PLATTING OF LOTS 6 TO 15 INCLUSIVE, BLOCK 3; LOTS 6 TO 26 INCLUSIVE, BLOCK 4; LOTS 1 TO 13 INCLUSIVE, BLOCK 5; AND LOTS 38 AND 39, BLOCK 5; ALL IN WESTWOOD HEIGHTS, AN ADDITION IN DOUGLAS COUNTY, NEBRASKA.

THAT SAID WESTWOOD HEIGHTS IS A PLATTING OF PART OF THE SOUTHEAST QUARTER OF THE NORTHEAST QUARTER OF SECTION 31, TOWNSHIP 15 NORTH, RANGE 12 EAST OF THE 6TH PRINCIPAL MERIDIAN; MORE PARTICULARLY DESCRIBED AS FOLLOWS: BEGINNING AT A POINT 1382.53 FEET SOUTH AND 773.00 FEET WEST OF THE NORTHEAST CORNER OF THE NORTHEAST QUARTER OF SAID SECTION 31; THENCE RUNNING SOUTH AND PARALLEL TO THE EAST LINE OF SAID NORTHEAST QUARTER, ALONG THE WEST LINE OF LOTS 16 TO 22, INCLUSIVE, BLOCK 3 OF THE FIRST PLATTING OF WESTWOOD HEIGHTS, AS SURVEYED, PLATTED AND RECORDED, A DISTANCE OF 420.00 FEET; THENCE TURNING AN ANGLE OF 90° TO THE LEFT AND RUNNING EAST ALONG THE SOUTH LINE OF LOT 16, BLOCK 3, OF SAID WESTWOOD HEIGHTS, AS SURVEYED, PLATTED AND RECORDED, A DISTANCE OF 122.00 FEET; THENCE TURNING AN ANGLE OF 90° TO THE RIGHT AND RUNNING SOUTH ALONG THE WEST LINE OF 122ND STREET, IN SAID WESTWOOD HEIGHTS, AS SURVEYED, PLATTED AND RECORDED, A DISTANCE OF 435.00 FEET; THENCE TURNING AN ANGLE OF 90° TO THE RIGHT AND RUNNING WEST A DISTANCE OF 74.00 FEET; THENCE TURNING TO THE LEFT AND RUNNING SOUTHWESTERLY, ALONG A CURVE WHOSE RADIUS IS 240.00 FEET, AN ARC DISTANCE OF 37.96 FEET; THENCE TURNING AN ANGLE OF 90° TO THE RIGHT, FROM THE TANGENT TO THE CURVE, AND RUNNING NORTHWESTERLY A DISTANCE OF 125.00 FEET; THENCE TURNING AN ANGLE OF 90° TO THE LEFT, TO THE TANGENT OF A CURVE WHOSE RADIUS IS 365.00 FEET AND RUNNING SOUTHWESTERLY, ON THE AFORESAID CURVE AN ARC DISTANCE OF 388.21 FEET; THENCE RUNNING SOUTHWESTERLY ON THE TANGENT OF THE AFORESAID CURVE, A DISTANCE OF 222.00 FEET; THENCE TURNING AN ANGLE OF 90° TO THE RIGHT AND RUNNING NORTHWESTERLY A DISTANCE OF 185.00 FEET; THENCE TURNING AN ANGLE OF 90° TO THE RIGHT AND RUNNING NORTHEASTERLY A DISTANCE OF 222.00 FEET; THENCE TURNING TO THE LEFT AND RUNNING NORTHEASTERLY, ON A CURVE WHOSE RADIUS IS 550.00 FEET, AN ARC DISTANCE OF 200.37 FEET; THENCE TURNING AN ANGLE OF 87° 23' 44" TO THE LEFT, FROM THE TANGENT OF THE AFORESAID CURVE AND RUNNING NORTHWESTERLY, A DISTANCE OF 27.73 FEET; THENCE TURNING TO THE RIGHT AND RUNNING NORTHWESTERLY, ON A CURVE WHOSE RADIUS IS 250.00 FEET, AN ARC DISTANCE OF 202.99 FEET; THENCE RUNNING NORTH AND PARALLEL TO THE EAST LINE OF SAID NORTHEAST QUARTER, ON THE TANGENT OF THE AFORESAID CURVE, A DISTANCE OF 534.60 FEET; THENCE TURNING AN ANGLE OF 90° TO THE RIGHT AND RUNNING EAST A DISTANCE OF 466.00 FEET TO THE POINT OF BEGINNING.

IN WITNESS WHEREOF, I HAVE HEREUNTO SET MY HAND AND OFFICIAL SEAL THIS 17<sup>th</sup> DAY OF AUGUST 1958.

*Wm L. Hill*  
 REGISTERED PROFESSIONAL ENGINEER  
 AND LAND SURVEYOR

HENNINGSON, DURHAM AND RICHARDSON, INC.  
 CONSULTING ENGINEERS



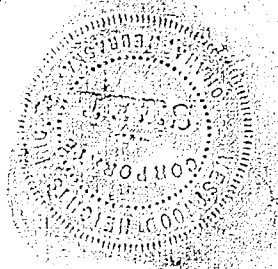
DEDICATION

KNOW ALL MEN BY THESE PRESENTS; THAT WE, MILLARD R. SELDIN, AND WESTWOOD HEIGHTS INC., A NEBRASKA CORPORATION, BEING SOLE OWNERS AND PROPRIETORS OF THE LAND DESCRIBED IN THE SURVEYORS CERTIFICATE AND EMBRACED WITHIN THIS PLAT, HAVE CAUSED THE SAME TO BE SUBDIVIDED INTO LOTS AND STREETS, SAID SUBDIVISION TO BE HEREAFTER KNOWN AS WESTWOOD HEIGHTS, THE LOTS NUMBERED AS SHOWN, AND WE HEREBY RATIFY AND APPROVE OF THE DISPOSITION OF OUR PROPERTY AS SHOWN, AND WE HEREBY DEDICATE TO THE PUBLIC FOR PUBLIC USE THE STREETS AS SHOWN HEREON.

IN WITNESS WHEREOF, WE DO HEREUNTO SET OUR HANDS AND CORPORATE SEAL THIS 19 DAY OF August, A.D., 1958.

MILLARD R. SELDIN

WESTWOOD HEIGHTS INC. BEN I. SELDIN, PRESIDENT MILLARD R. SELDIN, SECRETARY



ACKNOWLEDGEMENT

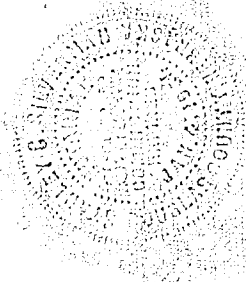
STATE OF NEBRASKA COUNTY OF DOUGLAS

ON THIS 18 DAY OF August, A.D., 1958, BEFORE ME, A NOTARY PUBLIC, DULY COMMISSIONED AND QUALIFIED IN AND FOR SAID COUNTY, CAME BEN I. SELDIN AND MILLARD R. SELDIN, WHO ARE PERSONALLY KNOWN BY ME TO BE THE IDENTICAL PERSONS WHOSE NAMES ARE AFFIXED TO THE ABOVE DEDICATION AS PRESIDENT AND SECRETARY OF WESTWOOD HEIGHTS INC., AND AS AN INDIVIDUAL AND THEY ACKNOWLEDGE THE SIGNING OF SAID DEDICATION TO BE THEIR VOLUNTARY ACTS AND DEEDS AND THE VOLUNTARY ACT AND DEED OF SAID CORPORATION.

WITNESS MY HAND AND SEAL AT OMAHA, NEBRASKA, IN SAID COUNTY, THE DATE LAST AFORESAID.

Stanley C. Silverman NOTARY PUBLIC

MY COMMISSION EXPIRES ON THE 4 DAY OF January, 1964.



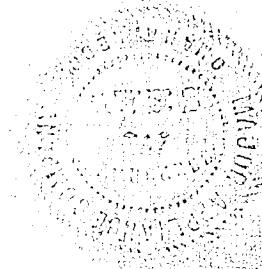
MORTGAGE RELEASE

KNOW ALL MEN BY THESE PRESENTS; THAT, MAJOR APPLIANCE COMPANY, A NEBRASKA CORPORATION, MORTGAGEE UNDER THE MORTGAGE DATED June 16, 1958 AND RECORDED IN BOOK 1286, PAGE 313 OF THE MORTGAGE RECORDS OF DOUGLAS COUNTY, NEBRASKA, AND EMBRACED WITHIN THIS PLAT OF LOTS 6 TO 15 INCLUSIVE, BLOCK 3; LOTS 6 TO 26 INCLUSIVE, BLOCK 4; LOTS 1 TO 13 INCLUSIVE, BLOCK 5; AND LOTS 38 AND 39, BLOCK 5, ALL IN WESTWOOD HEIGHTS, DO HEREBY CONSENT TO AND APPROVE THE PLATTING OF SAID LAND AS SHOWN ON THIS PLAT AND DO HEREBY RELEASE SAID MORTGAGE ON THE LAND COVERED BY AND EMBRACED WITHIN THE STREETS DEDICATED TO THE PUBLIC AS SHOWN ON THE PLAT, WITHOUT PREJUDICE TO THE LIEN OF THE MORTGAGE ON THE BALANCE OF THE LAND DESCRIBED THEREIN.

IN WITNESS WHEREOF, WE DO HEREUNTO SET OUR HANDS AND CORPORATE SEAL THIS 18th DAY OF August 1958.

David E. Beber ATTEST ACTING SECRETARY

MAJOR APPLIANCE COMPANY BY M.S. LIVINGSTON, PRESIDENT



ACKNOWLEDGEMENT

STATE OF NEBRASKA COUNTY OF DOUGLAS

ON THIS 18th DAY OF August, A.D., 1958, BEFORE ME, A NOTARY PUBLIC DULY COMMISSIONED AND QUALIFIED IN AND FOR SAID COUNTY, CAME M.S. LIVINGSTON AND DAVID E.L. BEBER, WHO ARE PERSONALLY KNOWN BY ME TO BE THE IDENTICAL PERSONS WHOSE NAMES ARE AFFIXED TO THE ABOVE MORTGAGE RELEASE, AS PRESIDENT AND ACTING SECRETARY MAJOR APPLIANCE COMPANY, A NEBRASKA CORPORATION, AND THEY ACKNOWLEDGE THE EXECUTION THEREOF TO BE THEIR VOLUNTARY ACTS AND DEEDS AND THE VOLUNTARY ACT AND DEED OF SAID MAJOR APPLIANCE COMPANY.

WITNESS MY HAND AND SEAL AT OMAHA, NEBRASKA, IN SAID COUNTY THIS 18th DAY OF August, A.D., 1958.

Vale Richards NOTARY PUBLIC

MY COMMISSION EXPIRES THE 4 DAY OF January, 1961.

