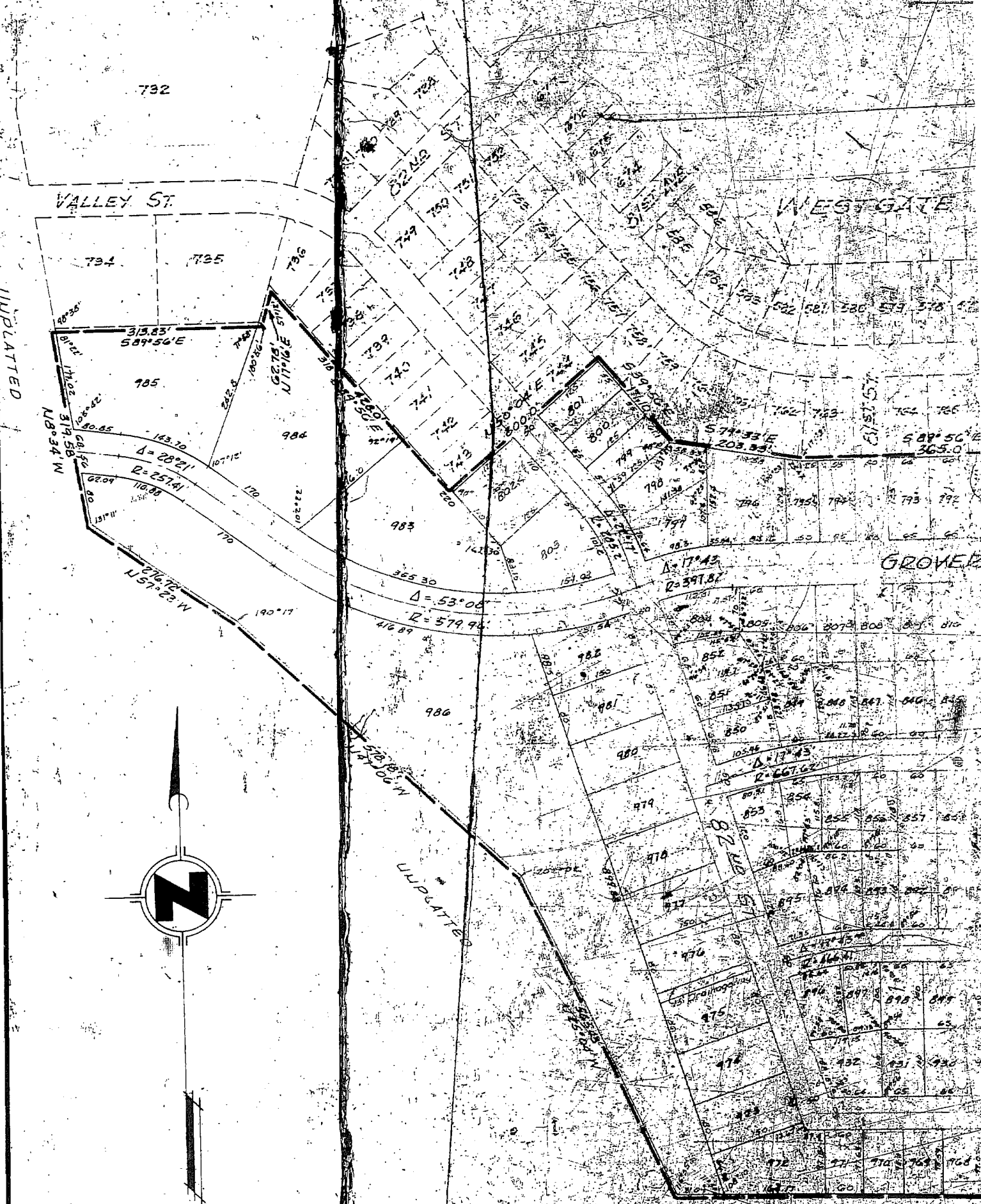


WESTGATE (LOTS 790)

A PLATTING OF A PART OF THE S 1/2 OF NW 1/4 AND SW 1/4 SEC. 35-15-12 OF 6th P.M.

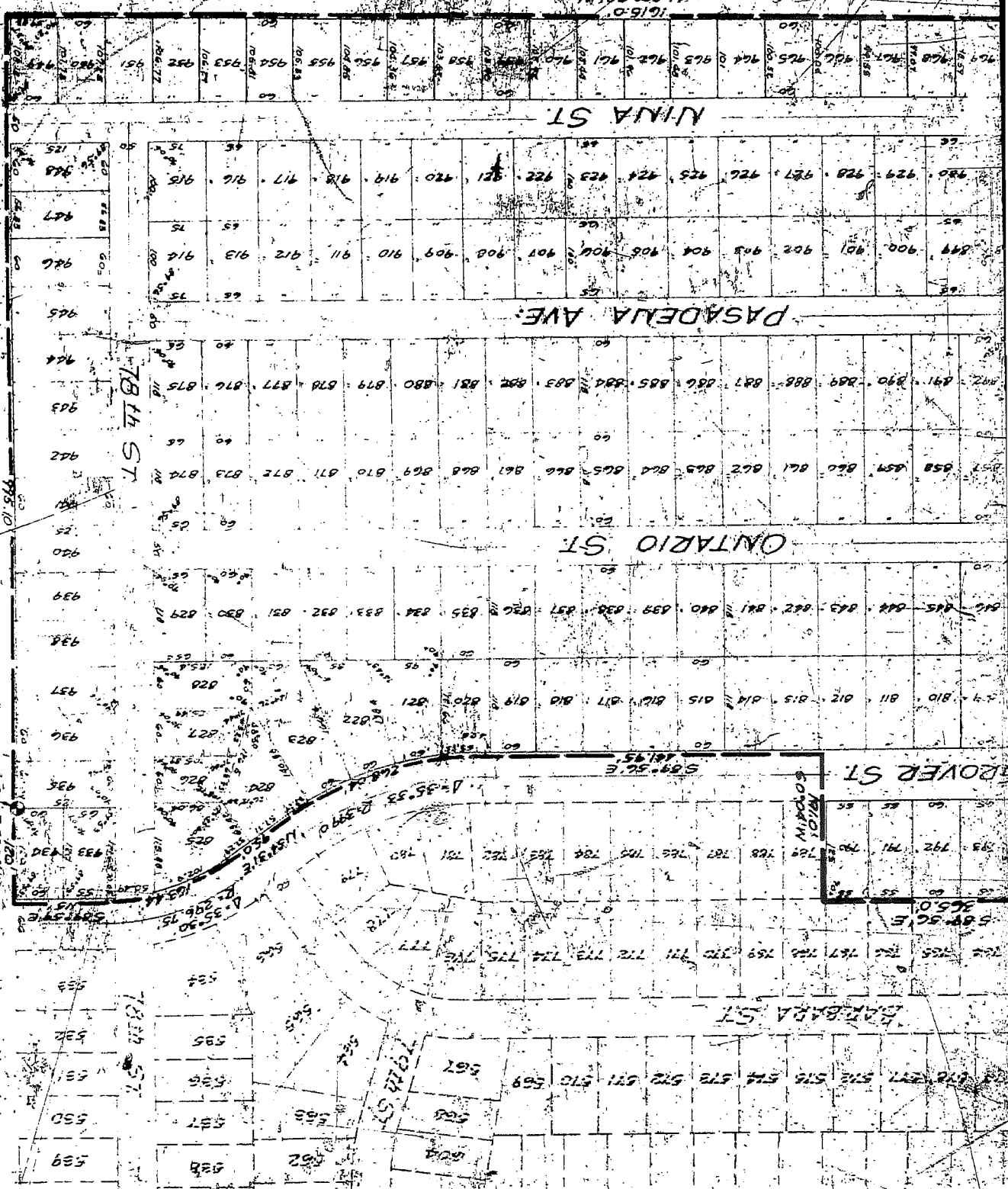


SCALE: 1" = 100'

NOTE: Curve distances, not chord distances are shown on plat.

UNPLATTED

11.84' 24" N. 0.916'



UNPLATTED

5.0.04' N

POINT OF BEGINNING SEC COR NW 1/4 SEC 35-15-12

DATE (LOTS 510 TO 789 INCL)

6 790 TO 986 (INCLUSIVE) 1/4 AND 1/2 OF