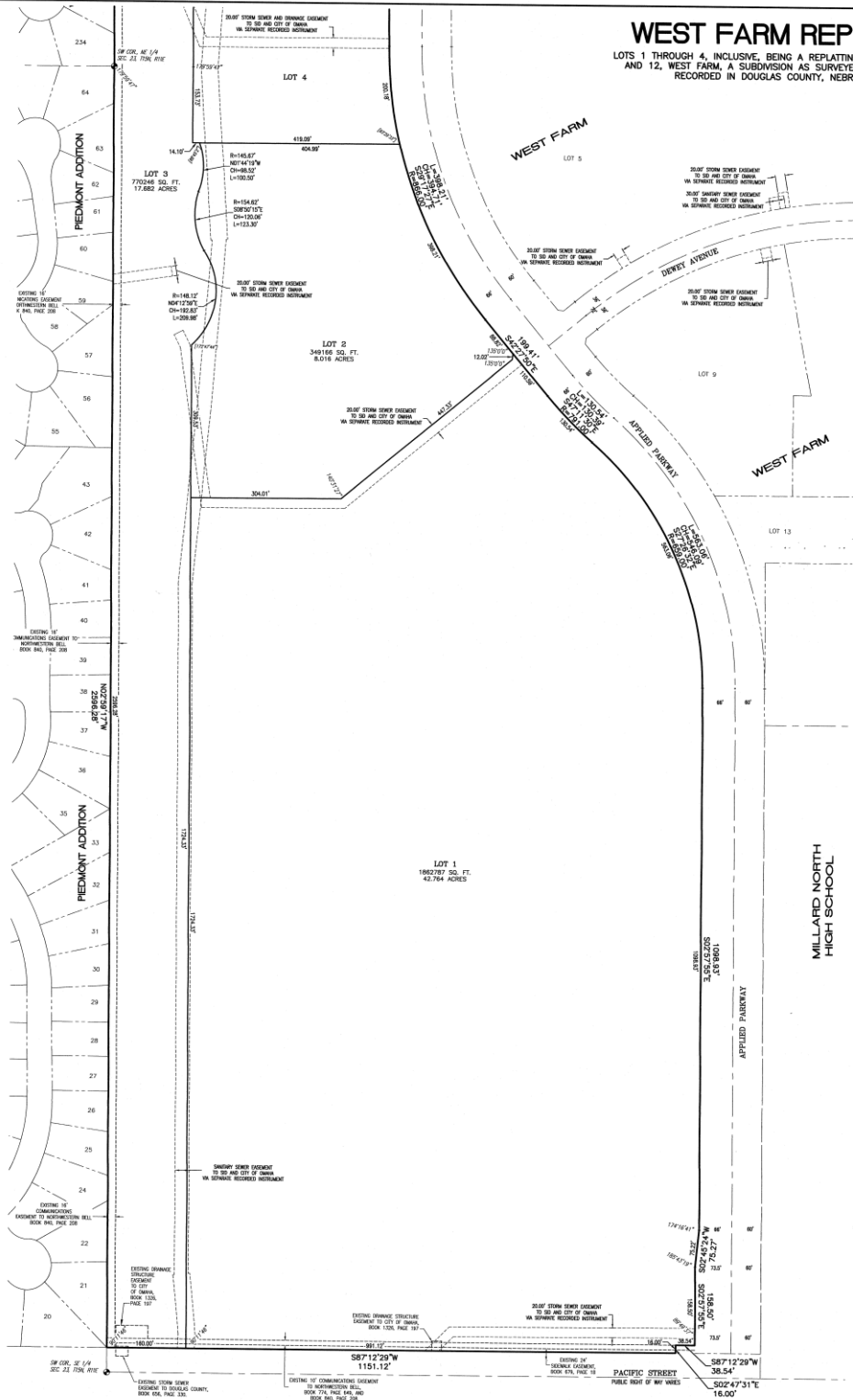


# WEST FARM REPLAT 1

LOTS 1 THROUGH 4, INCLUSIVE, BEING A REPLATTING OF LOTS 10, 11 AND 12, WEST FARM, A SUBDIVISION AS SURVEYED, PLATTED AND RECORDED IN DOUGLAS COUNTY, NEBRASKA.

LOCATED IN:  
NW 1/4 NE 1/4 SEC. 23, T15N, R11E  
SW 1/4 NE 1/4 SEC. 23, T15N, R11E  
NW 1/4 SE 1/4 SEC. 23, T15N, R11E  
SW 1/4 SE 1/4 SEC. 23, T15N, R11E



- LEGEND**
- CONTROLLED ACCESS LINE
  - - - SECTION LINE
  - SECTION CORNER
  - BOUNDARY LINE
  - LOT LINE
  - EXISTING LOT LINE
  - - - EASEMENT LINE

- NOTES**
1. ALL DISTANCES ARE SHOWN IN DECIMAL FEET.
  2. ALL DISTANCES SHOWN ALONG CURVES ARE ARC DISTANCES NOT CHORD DISTANCES.
  3. ALL ANGLES ARE 90° UNLESS OTHERWISE NOTED.
  4. ALL LOT LINES ON CURVED STREETS ARE RADIAL UNLESS OTHERWISE NOTED WITH AN ANGLE ADJACENT TO THE CURVE, MEASURED TO THE CHORD AND SHOWN IN BRACKETS.
  5. LOTS WILL HAVE NO DIRECT VEHICULAR ACCESS TO WEST DOGGE ROAD OR PACIFIC STREET.
  6. ALL EXISTING EASEMENTS ARE NOT BEING REDEDICATED AND ARE SHOWN FOR REFERENCE ONLY.

OWNER	CONTRACT NO.	DATE
DATE	BY	SCALE
CAD DRAWN/PLOTTED	L.S. 2009	
CHECKED		
DRAWN		
DATE		

**LAMP RYNEARSON & ASSOCIATES**  
 14710 West Dodge Road, Suite 100  
 Omaha, Nebraska 68154-2027  
 402-486-2498 | 402-486-2300 | FAX  
 www.LRA-inc.com

**WEST FARM REPLAT 1 (LOTS 1 THROUGH 4, INCLUSIVE)**  
 DOUGLAS COUNTY, NEBRASKA

ADMINISTRATIVE  
 MINOR PLAT

