

WEST PARACRES SUBDIVISION

PS-01-1

PS-01-1

PS-01-1

WEST FAIRACRES

TRACT OF LAND LOCATED IN THE NEAR OF SECTION 11
TOWNSHIP 35N, RANGE 12E OF THE 6TH PRINCIPAL MERIDIAN

There are in this tract of land, located in the NEAR of Section 11, Township 35N, Range 12E of the 6th Principal Meridian, an undivided tract of land known as the West Fairacres. This tract is situated in the NEAR of Section 11, Township 35N, Range 12E of the 6th Principal Meridian, and is bounded by the West Fairacres on the north, by the 11th Street on the east, by the 12th Street on the south, and by the 13th Street on the west. The West Fairacres is a tract of land consisting of 10 lots, each containing an area of approximately 1.5 acres. The West Fairacres is situated in the NEAR of Section 11, Township 35N, Range 12E of the 6th Principal Meridian, and is bounded by the West Fairacres on the north, by the 11th Street on the east, by the 12th Street on the south, and by the 13th Street on the west.

I, Richard W. White, Vice-President and Treasurer, and Howard Drake, Vice-President and Secretary, of the West Fairacres, do hereby certify that the above is a true and correct copy of the original plat as filed in the office of the County Clerk of the County of Contra Costa, California.

Richard W. White
Vice-President and Treasurer

Howard Drake
Vice-President and Secretary

STATE OF CALIFORNIA
COUNTY OF CONTRA COSTA

I, Richard W. White, Vice-President and Treasurer, and Howard Drake, Vice-President and Secretary, of the West Fairacres, do hereby certify that the above is a true and correct copy of the original plat as filed in the office of the County Clerk of the County of Contra Costa, California.

I, Richard W. White, Vice-President and Treasurer, and Howard Drake, Vice-President and Secretary, of the West Fairacres, do hereby certify that the above is a true and correct copy of the original plat as filed in the office of the County Clerk of the County of Contra Costa, California.

I, Richard W. White, Vice-President and Treasurer, and Howard Drake, Vice-President and Secretary, of the West Fairacres, do hereby certify that the above is a true and correct copy of the original plat as filed in the office of the County Clerk of the County of Contra Costa, California.

I, Richard W. White, Vice-President and Treasurer, and Howard Drake, Vice-President and Secretary, of the West Fairacres, do hereby certify that the above is a true and correct copy of the original plat as filed in the office of the County Clerk of the County of Contra Costa, California.

I, Richard W. White, Vice-President and Treasurer, and Howard Drake, Vice-President and Secretary, of the West Fairacres, do hereby certify that the above is a true and correct copy of the original plat as filed in the office of the County Clerk of the County of Contra Costa, California.

I, Richard W. White, Vice-President and Treasurer, and Howard Drake, Vice-President and Secretary, of the West Fairacres, do hereby certify that the above is a true and correct copy of the original plat as filed in the office of the County Clerk of the County of Contra Costa, California.

I, Richard W. White, Vice-President and Treasurer, and Howard Drake, Vice-President and Secretary, of the West Fairacres, do hereby certify that the above is a true and correct copy of the original plat as filed in the office of the County Clerk of the County of Contra Costa, California.

I, Richard W. White, Vice-President and Treasurer, and Howard Drake, Vice-President and Secretary, of the West Fairacres, do hereby certify that the above is a true and correct copy of the original plat as filed in the office of the County Clerk of the County of Contra Costa, California.

I, Richard W. White, Vice-President and Treasurer, and Howard Drake, Vice-President and Secretary, of the West Fairacres, do hereby certify that the above is a true and correct copy of the original plat as filed in the office of the County Clerk of the County of Contra Costa, California.

I, Richard W. White, Vice-President and Treasurer, and Howard Drake, Vice-President and Secretary, of the West Fairacres, do hereby certify that the above is a true and correct copy of the original plat as filed in the office of the County Clerk of the County of Contra Costa, California.

I, Richard W. White, Vice-President and Treasurer, and Howard Drake, Vice-President and Secretary, of the West Fairacres, do hereby certify that the above is a true and correct copy of the original plat as filed in the office of the County Clerk of the County of Contra Costa, California.

I, Richard W. White, Vice-President and Treasurer, and Howard Drake, Vice-President and Secretary, of the West Fairacres, do hereby certify that the above is a true and correct copy of the original plat as filed in the office of the County Clerk of the County of Contra Costa, California.

I, Richard W. White, Vice-President and Treasurer, and Howard Drake, Vice-President and Secretary, of the West Fairacres, do hereby certify that the above is a true and correct copy of the original plat as filed in the office of the County Clerk of the County of Contra Costa, California.

I, Richard W. White, Vice-President and Treasurer, and Howard Drake, Vice-President and Secretary, of the West Fairacres, do hereby certify that the above is a true and correct copy of the original plat as filed in the office of the County Clerk of the County of Contra Costa, California.

I, Richard W. White, Vice-President and Treasurer, and Howard Drake, Vice-President and Secretary, of the West Fairacres, do hereby certify that the above is a true and correct copy of the original plat as filed in the office of the County Clerk of the County of Contra Costa, California.

I, Richard W. White, Vice-President and Treasurer, and Howard Drake, Vice-President and Secretary, of the West Fairacres, do hereby certify that the above is a true and correct copy of the original plat as filed in the office of the County Clerk of the County of Contra Costa, California.

I, Richard W. White, Vice-President and Treasurer, and Howard Drake, Vice-President and Secretary, of the West Fairacres, do hereby certify that the above is a true and correct copy of the original plat as filed in the office of the County Clerk of the County of Contra Costa, California.

I, Richard W. White, Vice-President and Treasurer, and Howard Drake, Vice-President and Secretary, of the West Fairacres, do hereby certify that the above is a true and correct copy of the original plat as filed in the office of the County Clerk of the County of Contra Costa, California.

I, Richard W. White, Vice-President and Treasurer, and Howard Drake, Vice-President and Secretary, of the West Fairacres, do hereby certify that the above is a true and correct copy of the original plat as filed in the office of the County Clerk of the County of Contra Costa, California.

I, Richard W. White, Vice-President and Treasurer, and Howard Drake, Vice-President and Secretary, of the West Fairacres, do hereby certify that the above is a true and correct copy of the original plat as filed in the office of the County Clerk of the County of Contra Costa, California.

ALCORN SEC. 1
1514 P.I.E.

WEST DODGE ROAD 8 U.S. HWY. 30A

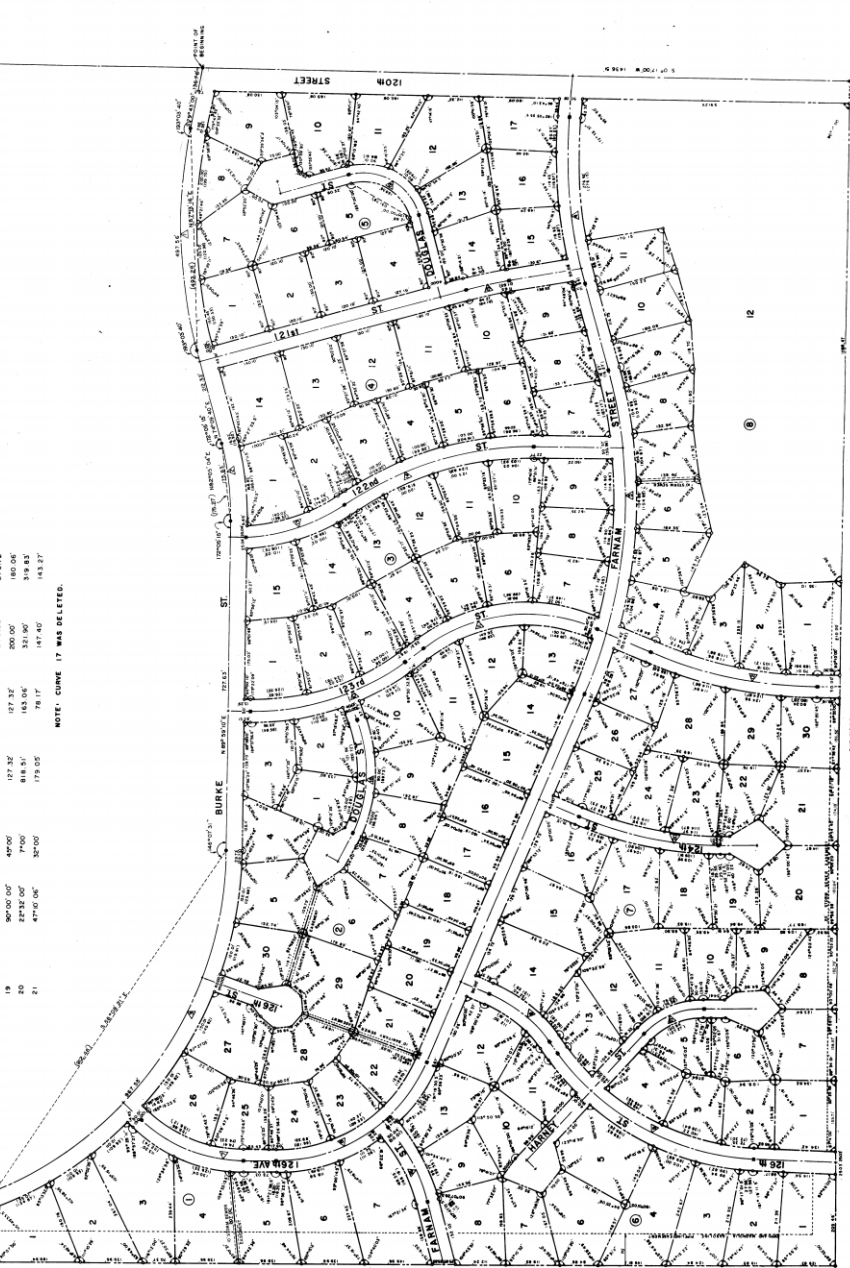
CURVE DATA

No.	A	D	R	T	L	LC
1	280' 07" 00"	9' 15"	1038.35'	358.36'	497.56'	493.28'
2	300' 00" 00"	0' 00"	618.62'	88.48'	175.83'	175.27'
3	125' 00" 00"	0' 00"	424.44'	0' 00"	462.00'	462.00'
4	197' 36" 30"	9' 15"	1038.35'	358.36'	497.56'	493.28'
5	38' 40" 00"	17' 00"	558.07'	330.38'	422.00'	388.00'
6	67' 31" 30"	17' 00"	330.38'	422.00'	253.04'	247.44'
7	49' 01" 00"	17' 00"	330.38'	422.00'	174.00'	174.00'
8	30' 00" 00"	17' 00"	558.07'	330.38'	422.00'	422.00'
9	50' 08" 30"	17' 00"	558.07'	330.38'	422.00'	422.00'
10	50' 08" 30"	17' 00"	558.07'	330.38'	422.00'	422.00'
11	50' 08" 30"	17' 00"	558.07'	330.38'	422.00'	422.00'
12	22' 47" 00"	6' 00"	854.33'	424.44'	131.17'	131.17'
13	34' 20" 00"	6' 00"	424.44'	131.17'	224.55'	224.55'
14	34' 20" 00"	6' 00"	424.44'	131.17'	224.55'	224.55'
15	49' 01" 00"	17' 00"	558.07'	330.38'	422.00'	422.00'
16	29' 32" 00"	17' 00"	558.07'	330.38'	422.00'	422.00'
17	30' 00" 00"	17' 00"	558.07'	330.38'	422.00'	422.00'
18	30' 00" 00"	17' 00"	558.07'	330.38'	422.00'	422.00'
19	30' 00" 00"	17' 00"	558.07'	330.38'	422.00'	422.00'
20	30' 00" 00"	17' 00"	558.07'	330.38'	422.00'	422.00'
21	30' 00" 00"	17' 00"	558.07'	330.38'	422.00'	422.00'
22	30' 00" 00"	17' 00"	558.07'	330.38'	422.00'	422.00'
23	30' 00" 00"	17' 00"	558.07'	330.38'	422.00'	422.00'
24	30' 00" 00"	17' 00"	558.07'	330.38'	422.00'	422.00'
25	30' 00" 00"	17' 00"	558.07'	330.38'	422.00'	422.00'
26	30' 00" 00"	17' 00"	558.07'	330.38'	422.00'	422.00'
27	30' 00" 00"	17' 00"	558.07'	330.38'	422.00'	422.00'
28	30' 00" 00"	17' 00"	558.07'	330.38'	422.00'	422.00'
29	30' 00" 00"	17' 00"	558.07'	330.38'	422.00'	422.00'
30	30' 00" 00"	17' 00"	558.07'	330.38'	422.00'	422.00'

NOTE: CURVE 17 WAS DELETED.



RECORD
7/26/18 10:00 AM
1286
141



1000'

1000'