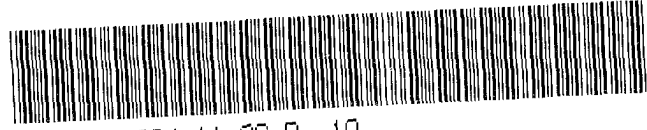




DEED 2004156131



DEC 02 2004 11:06 P 19

Nebr Doc Stamp Tax
12-2-04
Date
3 ex04
by <i>C</i>

THIS PAGE INCLUDED FOR INDEXING
PAGE DOWN FOR BALANCE OF INSTRUMENT

deed FEE 102.50
117.50 FB 01-60000-ald
 2219 BKP 17-15-11 CIO ✓ COMP lu
 15 DEL MS SCAN _____ FV _____

OC-42390
~~*08756*~~

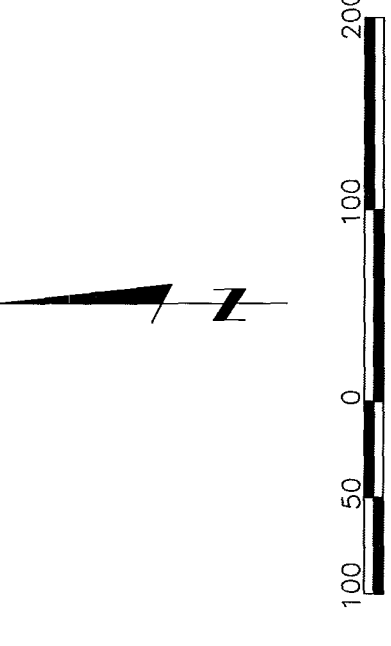
BKPY
12-3-04

WEST DODGE STATION

Lots 1 through 13, inclusive, and Outlot 1, being a platting of that part of the Northeast Quarter and the Southeast Quarter of Section 17, Township 15 North, Range 11 East of the 6th P.M., Douglas County, Nebraska.

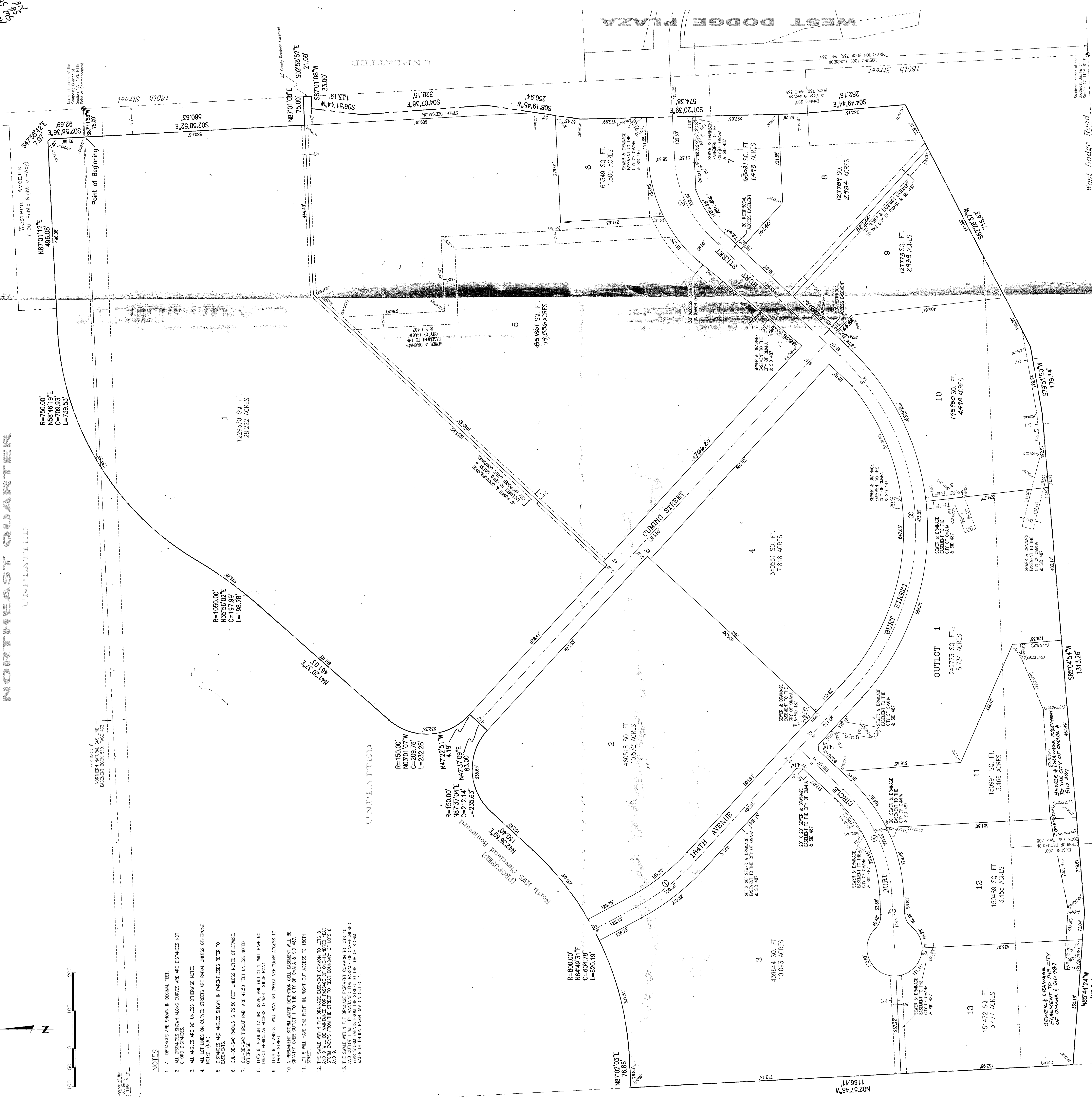
NORTHEAST QUARTER UNPLATTED

SOUTHWEST QUARTER UNPLATTED



NOTES

1. ALL DIMENSIONS ARE SHOWN IN DECIMAL FEET.
2. CURVE DATA: RADIUS, CHORD, CHORD BEARS, CHORD BEARS AND ARC DIMENSIONS NOT SHOWN.
3. ALL ANGLES ARE AS SHOWN UNLESS OTHERWISE NOTED.
4. ALL LINES ON CORNER SHEETS ARE BOUNDARY DIMENSIONS UNLESS OTHERWISE NOTED.
5. DIMENSIONS AND ANGLES SHOWN IN PARENTHESES REFER TO ADJACENT DIMENSIONS.
6. ALL DIMENSIONS ARE TO THE CENTERLINE UNLESS OTHERWISE NOTED.
7. ALL DIMENSIONS ARE TO THE CENTERLINE UNLESS OTHERWISE NOTED.
8. LOTS 1 THROUGH 13, INCLUDING ANY ADJUTANT, WILL HAVE 40' SIDE SETBACKS FROM THE FRONT AND 20' FROM THE REAR.
9. LOTS 1, 2 AND 3 WILL HAVE NO FRONT CORNER ACCESS TO FRONT STREET.
10. LOTS 1, 2 AND 3 WILL HAVE NO REAR CORNER ACCESS TO FRONT STREET.
11. LOTS 1, 2 AND 3 WILL HAVE ONE NORTH-SOUTH, NORTH-OUT ACCESS TO FRONT STREET.
12. THE SETBACKS FROM THE FRONT AND REAR OF LOTS 1, 2 AND 3 WILL BE MAINTAINED FOR THE DURATION OF THE PROJECT AND SHALL BE MAINTAINED FOR THE DURATION OF THE PROJECT AND SHALL BE MAINTAINED FOR THE DURATION OF THE PROJECT.
13. THE SETBACKS FROM THE FRONT AND REAR OF LOTS 1, 2 AND 3 WILL BE MAINTAINED FOR THE DURATION OF THE PROJECT AND SHALL BE MAINTAINED FOR THE DURATION OF THE PROJECT.



LAND SURVEYOR'S CERTIFICATE

I, the undersigned, having been duly sworn and qualified as a Land Surveyor for the State of Nebraska, do hereby certify that the foregoing platting of the West Dodge Station, consisting of Lots 1 through 13, inclusive, and Outlot 1, being a platting of that part of the Northeast Quarter and the Southeast Quarter of Section 17, Township 15 North, Range 11 East of the 6th P.M., Douglas County, Nebraska, has been made in accordance with the laws of the State of Nebraska, and that the same is a true and correct platting of the same.

Robert R. Prael, L.S. 379
Date: July 9, 2004

DEDICATION

KNOW ALL MEN BY THESE PRESENTS, that W. H. DOUGLAS, LLC, on behalf of its limited liability company, W. H. DOUGLAS, LLC, has caused this platting to be made and recorded in the public records of the State of Nebraska, and that the same is a true and correct platting of the same.

ACKNOWLEDGMENT OF NOTARIES

State of Nebraska, County of Douglas, Notary Public, My Comm. Expires July 1, 2006. I, the undersigned, have been duly sworn and qualified as a Notary Public for the State of Nebraska, and do hereby certify that the foregoing platting of the West Dodge Station, consisting of Lots 1 through 13, inclusive, and Outlot 1, being a platting of that part of the Northeast Quarter and the Southeast Quarter of Section 17, Township 15 North, Range 11 East of the 6th P.M., Douglas County, Nebraska, has been made in accordance with the laws of the State of Nebraska, and that the same is a true and correct platting of the same.

APPROVAL OF CITY ENGINEER OF OMAHA

I, the undersigned, have been duly sworn and qualified as the City Engineer of Omaha, Nebraska, and do hereby certify that the foregoing platting of the West Dodge Station, consisting of Lots 1 through 13, inclusive, and Outlot 1, being a platting of that part of the Northeast Quarter and the Southeast Quarter of Section 17, Township 15 North, Range 11 East of the 6th P.M., Douglas County, Nebraska, has been made in accordance with the laws of the State of Nebraska, and that the same is a true and correct platting of the same.

COUNTY ENGINEER'S CERTIFICATE

This plat of the West Dodge Station, consisting of Lots 1 through 13, inclusive, and Outlot 1, being a platting of that part of the Northeast Quarter and the Southeast Quarter of Section 17, Township 15 North, Range 11 East of the 6th P.M., Douglas County, Nebraska, has been made in accordance with the laws of the State of Nebraska, and that the same is a true and correct platting of the same.

COUNTY TREASURER'S CERTIFICATE

This plat of the West Dodge Station, consisting of Lots 1 through 13, inclusive, and Outlot 1, being a platting of that part of the Northeast Quarter and the Southeast Quarter of Section 17, Township 15 North, Range 11 East of the 6th P.M., Douglas County, Nebraska, has been made in accordance with the laws of the State of Nebraska, and that the same is a true and correct platting of the same.

APPROVAL OF OMAHA CITY COUNCIL

The plat of the West Dodge Station, consisting of Lots 1 through 13, inclusive, and Outlot 1, being a platting of that part of the Northeast Quarter and the Southeast Quarter of Section 17, Township 15 North, Range 11 East of the 6th P.M., Douglas County, Nebraska, has been made in accordance with the laws of the State of Nebraska, and that the same is a true and correct platting of the same.