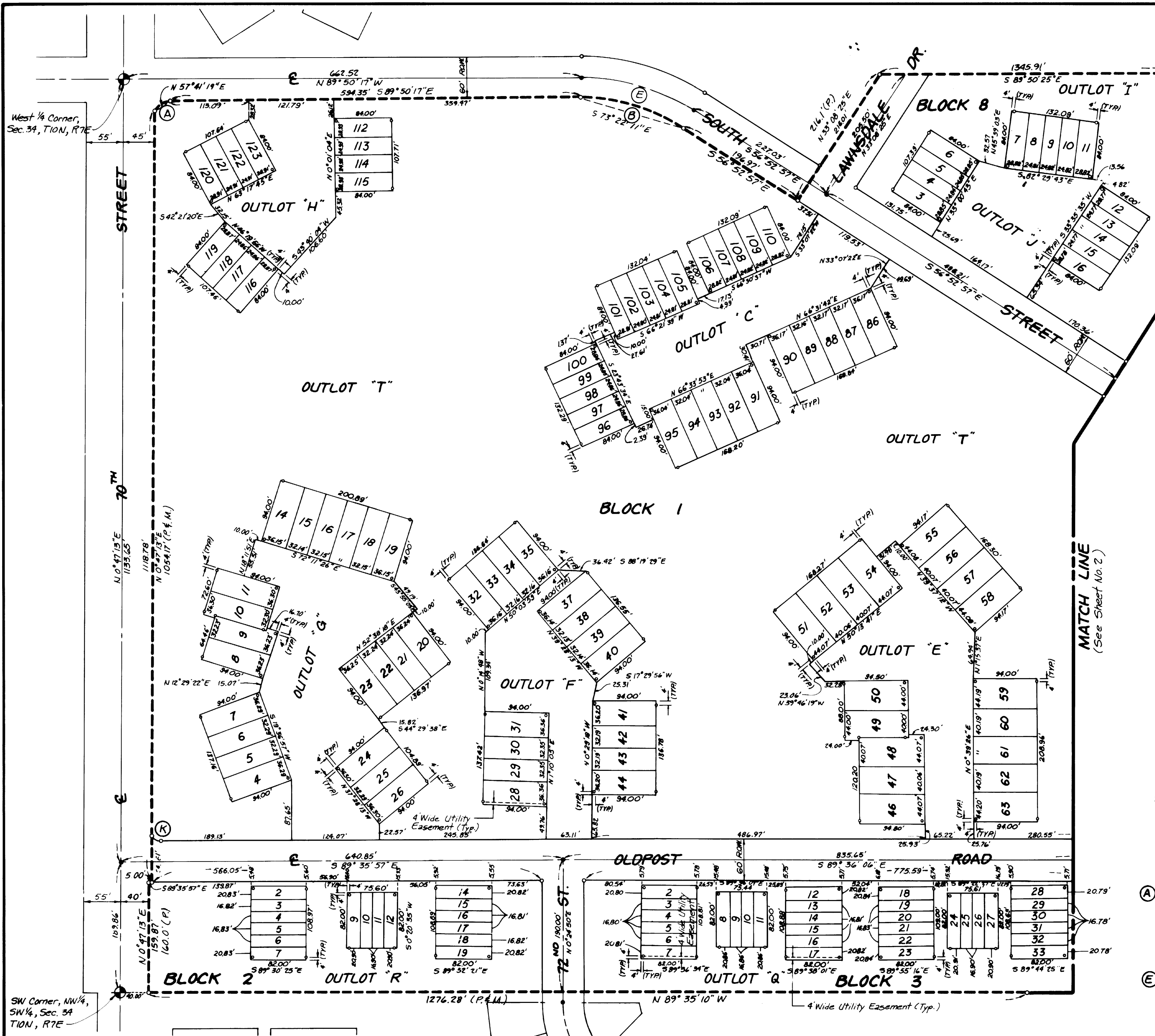


7925



### NOTES

1. Permanent Monuments are offset from the true lot corner as noted on the Amended Final Plat drawing.
2. All dimensions shown are chord distances unless otherwise shown.
3. Blanket Utility Easement on all Outlots.

# AMENDED FINAL PLAT OF WELLINGTON GREENS REPLAT



Scale: 1"=100'

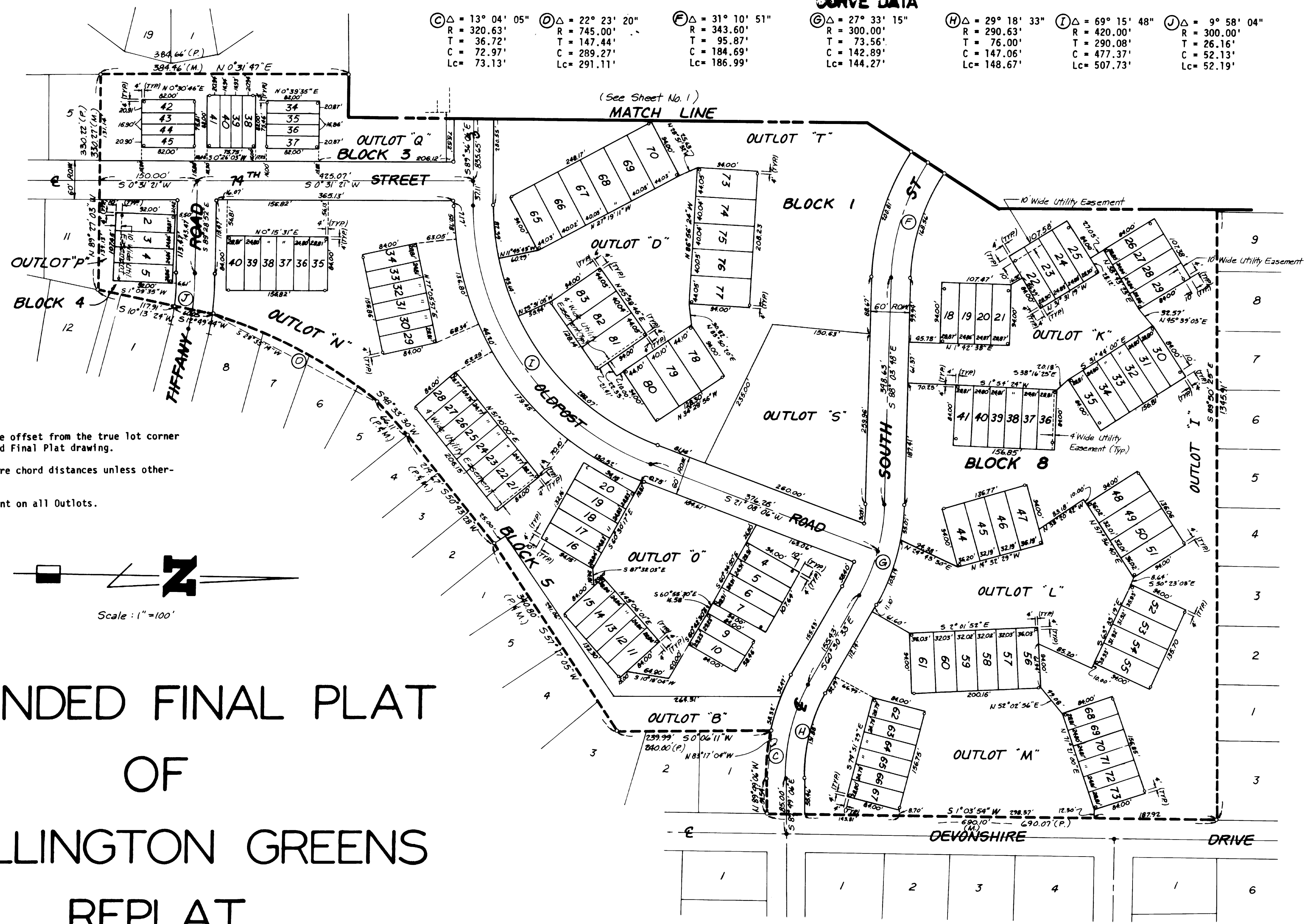
### CURVE DATA

(A) $\Delta = 65^\circ 17' 22''$ R = 26.00' T = 16.66' C = 28.05' Lc = 29.63'	(B) $\Delta = 32^\circ 58' 25''$ R = 273.56' T = 80.96' C = 155.27' Lc = 157.43'
(E) $\Delta = 32^\circ 58' 25''$ R = 303.56' T = 89.84' C = 172.30' Lc = 174.70'	(K) $\Delta = 37^\circ 45' 23''$ R = 22.00' T = 7.52' C = 14.24' Lc = 14.50'

79.75

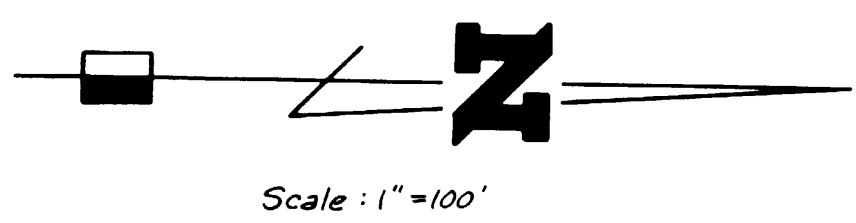
### CURVE DATA

Ⓒ Δ = 13° 04' 05"	Ⓓ Δ = 22° 23' 20"	Ⓔ Δ = 31° 10' 51"	Ⓖ Δ = 27° 33' 15"	Ⓗ Δ = 29° 18' 33"	Ⓙ Δ = 69° 15' 48"	Ⓚ Δ = 9° 58' 04"
R = 320.63'	R = 745.00'	R = 343.60'	R = 300.00'	R = 290.63'	R = 420.00'	R = 300.00'
T = 36.72'	T = 147.44'	T = 95.87'	T = 73.56'	T = 76.00'	T = 290.08'	T = 26.16'
C = 72.97'	C = 289.27'	C = 184.69'	C = 142.89'	C = 147.06'	C = 477.37'	C = 52.13'
Lc = 73.13'	Lc = 291.11'	Lc = 186.99'	Lc = 144.27'	Lc = 148.67'	Lc = 507.73'	Lc = 52.19'



### NOTES

1. Permanent Monuments are offset from the true lot corner as noted on the Amended Final Plat drawing.
2. All dimensions shown are chord distances unless otherwise shown.
3. Blanket Utility Easement on all Outlots.



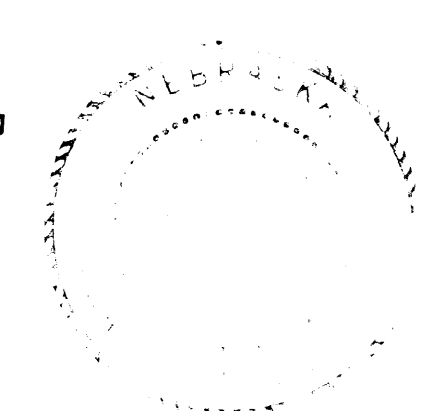
# AMENDED FINAL PLAT OF WELLINGTON GREENS REPLAT

# AMENDED FINAL PLAT OF WELLINGTON GREENS REPLAT

## CONVEYOR'S CERTIFICATE

I hereby certify that I have accurately surveyed the Amended Final Plat described herein and that Permanent Monuments have been placed at all Boundary Corners, block corners, lot corners (at offsets to Lot corners as shown on Amended Final Plat drawing) and at centerline points of tangency and curvature; to be known as an Amended Final Plat of a portion of Wellington Greens Replat, located in the southwest quarter of Section 34, Township 10 North, Range 7 East of the 6th P.M. Lancaster County, Nebraska, more fully described as follows: (for the purpose of this Legal Description, the West Line of the southwest quarter of Section 34 was assumed to have a bearing of N 0°47'13" E).

Commencing at the southwest corner of the northwest quarter of the southwest quarter of Section 34, Township 10 North, Range 7 East, on a bearing of S 89°35'10" E, a distance of 40.00' to the point of beginning; thence on a bearing of N 0°47'13" E a distance of 159.87'; thence on a bearing of S 89°35'57" E a distance of 5.00'; thence on a bearing of N 0°47'13" E a distance of 1118.78' to a point of curvature of a 26.00' radius curve to the right, having a tangent of 16.66' and a central angle of 65°17'22"; thence in a northeasterly direction along said curve an arc distance of 29.63' (chord distance of 28.05') to a point of tangency; thence on a bearing of S 89°50'17" E a distance of 594.35', to a point of curvature of a 273.56' radius curve to the right, having a tangent of 80.96' and a central angle of 32°58'25"; thence in a southeasterly direction along said curve an arc distance of 157.43' (chord distance of 155.27') to a point of tangency; thence on a bearing of S 56°52'57" E a distance of 196.97'; thence on a bearing of N 33°08'25" E a distance of 216.01'; thence on a bearing of S 89°50'25" E a distance of 1345.91'; thence on a bearing of S 1°03'54" W a distance of 690.10'; thence on a bearing of N 89°49'06" W a distance of 54.54', to a point of curvature of a 320.63' radius curve to the right, having a tangent of 36.72' and a central angle of 13°04'05"; thence in a northwesterly direction along said curve an arc distance of 73.13' (chord distance of 72.97') to a point of tangency; thence on a bearing of S 0°06'11" W a distance of 239.99'; thence on a bearing of S 57°17'05" W a distance of 340.80'; thence on a bearing of S 50°43'28" W a distance of 214.67'; thence on a bearing of S 48°33'30" W a distance of 66.11', to a point of curvature of a 745.00' radius curve to the left, having a tangent of 147.44' and a central angle of 22°23'20"; thence in a southwesterly direction along said curve an arc distance of 291.11' (chord distance of 289.27') to a point of tangency; thence on a bearing of S 12°49'44" W a distance of 60.05'; thence on a bearing of S 10°13'24" W a distance of 117.91'; thence on a bearing of N 89°27'03" W a distance of 330.27'; thence on a bearing of N 0°31'47" E a distance of 384.46'; thence on a bearing of N 89°35'10" W a distance of 1276.28' to the point of beginning and containing a calculated area of 70.45 acres. All dimensions are in feet and decimals of a foot unless otherwise shown.



Nov. 17, 1982  
Date
*Francis L. Rotter*  
F. L. Rotter
253  
L.S. No.

208  
 27-202  
 A-43

LANCASTER COUNTY, NEBR.  
*Dan Jels*  
 REGISTER OF DEEDS  
 1983 MAY -9 PM 2:29  
 ENTERED IN  
 NUMERICAL INDEX  
 FILED FOR RECORD AS:  
 INST. NO. 83- 7925 # 41 25

Reserving, in perpetuity, all previously dedicated easements for and rights of access to existing electrical power and light, telephone, sanitary sewer, water service, open or underground storm sewer or drainage, gas service, and community antenna television utilities over the amended plat. No building or structure shall be constructed or used as to interfere in any manner with any of the reserved easements, unless the owner: (1) bears the cost of relocating such utilities to the extent that such relocation is necessitated by such construction or use; (2) obtains and provides the easements and rights of access required by reason of any relocation; and (3) obtains the consent to any relocation from the operator of the affected utility.

### APPROVAL

The foregoing Amended Final Plat was Approved by the Lincoln City - Lancaster County Planning Director on this 26 day of APRIL, 1982.

ATTEST: *Paula Hill*  
 Director of Planning