

2003-23977

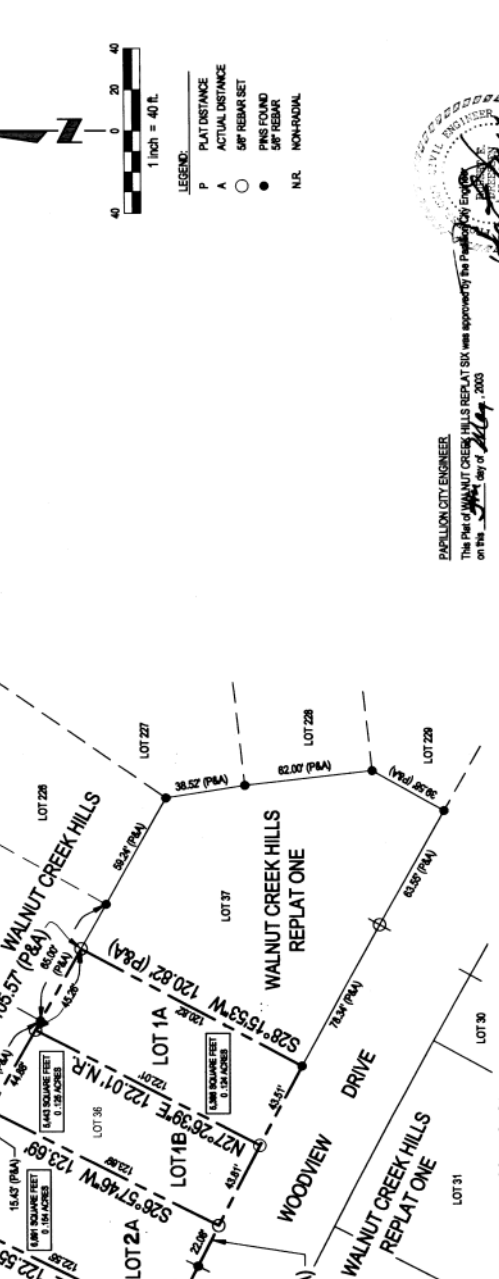
EXHIBIT B

NOTICE TO CONTRACTORS
 2003 MAY -5 P 4:29 P

REGISTER OF DEEDS
 County D
 Verify D
 D.E. D
 Paid 18.00
 Cash EACG



LEGEND:
 P PLAT DISTANCE
 A ACTUAL DISTANCE
 ○ SET REBAR SET
 ● PINS FOUND
 ○ SET REBAR
 N.R. NON-RADIAL



OWNER'S CERTIFICATE
 I hereby certify that I have surveyed and placed permanent markers at all corners of all lots shown on this plat, and that the same are in accordance with the plat and the surveyors' certificate and endorsed within the plat, and have caused said land to be subdivided into lots as shown on this plat.

OWNER'S CERTIFICATE
 I hereby certify that I have surveyed and placed permanent markers at all corners of all lots shown on this plat, and that the same are in accordance with the plat and the surveyors' certificate and endorsed within the plat, and have caused said land to be subdivided into lots as shown on this plat.

ACKNOWLEDGEMENT OF NOTARY
 State of Nebraska)
 County of Sarpy)
 On this 5th day of May, 2003, before me, a notary public, duly qualified and commissioned in and for said county and state, personally appeared Chad Lamm, Vice President of Celebrity Homes, Inc. who (personally) appeared to me to be the duly authorized signatory of the foregoing instrument and acknowledged to me that he was the party of the same to be duly voluntarily set and used as said officer of said corporation.

NOTARY PUBLIC
 Chad Lamm
 Date 4-25-03

APPROVAL OF PAVILLION CITY ADMINISTRATOR
 The Plat of WALNUT CREEK HILLS REPLAT SIX was approved by the Pavillion City Administrator on the 5th day of May, 2003.

APPROVAL OF PAVILLION CITY PLANNING DIRECTOR'S APPROVAL
 The Plat of WALNUT CREEK HILLS REPLAT SIX was approved by the Pavillion Planning Director on the 5th day of May, 2003.

ADMINISTRATIVE SUBDIVISION
 WALNUT CREEK HILLS REPLAT SIX
 LOTS 1A AND 1B, AND 2A AND 2B
 PAVILLION, NEBRASKA

E&A CONSULTING GROUP, INC.
 ENGINEERS • PLANNERS • SURVEYORS

13201 O STREET
 PAVILLION, NEBRASKA 68429
 PHONE (402) 237-1111
 FAX (402) 237-1112

ADMINISTRATIVE SUBDIVISION
 WALNUT CREEK HILLS REPLAT SIX
 LOTS 1A AND 1B, AND 2A AND 2B
 PAVILLION, NEBRASKA

Plat No.	20030524	Nebraska
Date	4/24/2003	
Drawn By	DSE	
Checked By		
Scale	1" = 40'	
Sheet	1 of 1	