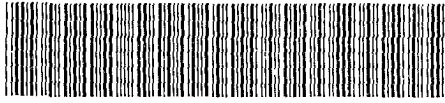


2135 142 DEED



14630 99 142-148

Nebr Doc Stamp Tax
10/14/99
Date
\$ 14.80
By [Signature]

RICHARD H. FARESE
REGISTER OF DEEDS
DOUGLAS COUNTY, NE

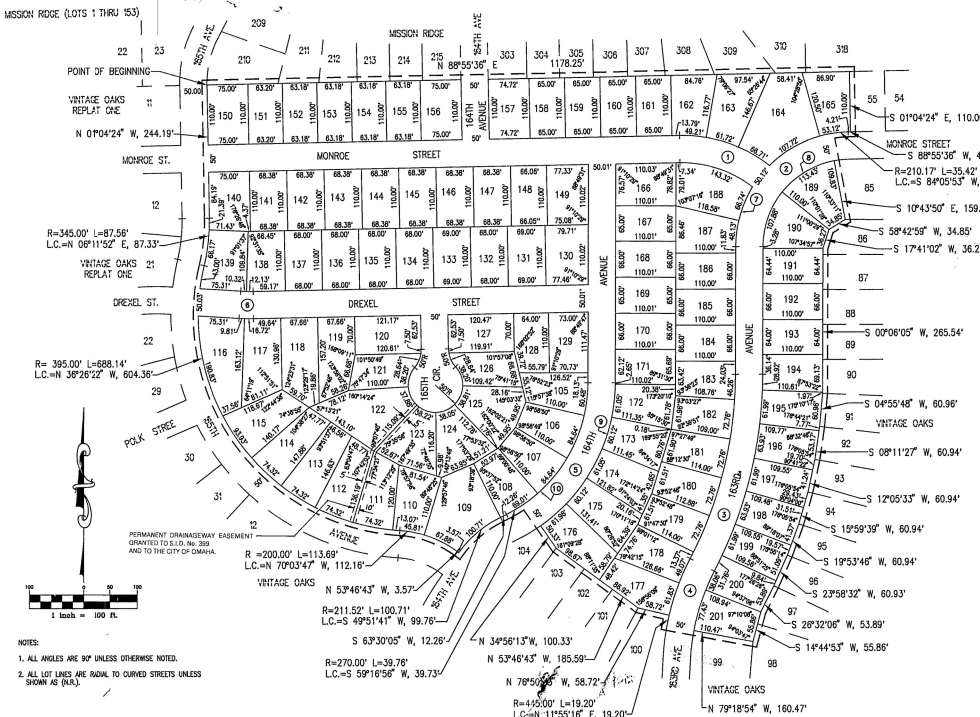
99 OCT 14 AM 10:57

RECEIVED

**THIS PAGE INCLUDED FOR INDEXING
PAGE DOWN FOR BALANCE OF INSTRUMENT**

14630 B MI-40345
~~FE 2400~~ ~~FB 01.60000~~
~~DO 12-14-11~~ ~~CO 20~~ ~~COMP~~
~~DE~~ ~~FCM~~ ~~FR~~ ~~911.7~~

SE SW
SW SW



NOTES:
 1. ALL ANGLES ARE 90° UNLESS OTHERWISE NOTED.
 2. ALL LOT LINES ARE RADIAL TO CURVED STREETS UNLESS SHOWN AS (N/S).

CURVE	ARC	LENGTH	TANGENT	DELTA
1	53.64'	150.48'	83.54'	38°15'10"
2	184.17'	132.26'	89.27'	41°01'11"
3	760.87'	382.59'	184.58'	27°20'08"
4	420.00'	122.36'	81.84'	18°40'07"
5	293.00'	282.38'	153.44'	44°37'41"
6	302.00'	244.49'	122.62'	44°40'52"

CURVE	RADIUS	LENGTH	TANGENT	DELTA
1	210.13'	132.87'	255.90'	88°40'51"
2	160.17'	221.31'	132.43'	72°10'09"
3	300.00'	306.87'	186.49'	44°37'41"
4	270.00'	288.77'	166.79'	42°42'07"

OMAHA CITY COUNCIL ACCEPTANCE
 This plat of VINTAGE OAKS (Lots numbered as shown) was approved by the City Council of Omaha on this 22 day of April, 1999.

MAYOR: *[Signature]*
 ATTEST: *[Signature]* CITY CLERK
 PRESIDENT OF COUNTY: *[Signature]*
 COUNTY TREASURER: *[Signature]*

COUNTY TREASURER'S CERTIFICATE
 This is to certify that I find no regular or special taxes due or delinquent against the property described in the Surveyor's Certificate and embraced in this plat as shown by the records of this office.
 Date: 9-13-99

ACKNOWLEDGEMENT OF NOTARY
 STATE OF NEBRASKA
 COUNTY OF DOUGLAS
 On this 22 day of April, 1999, before me a Notary Public, duly commissioned and qualified in and for said County, appeared Jerry L. Standerford, President of Lane Building Corp., personally known by me to be the identical person whose name is affixed to the dedication on this plat, and acknowledged the execution thereof to be his voluntary act and as officer of said corporation.

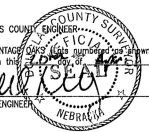
WITNESS my hand and Notarial Seal the day and year last above written.
[Signature]
 Notary Public



APPROVAL OF OMAHA CITY PLANNING BOARD
 This plat of VINTAGE OAKS (Lots numbered as shown) was approved by the City Planning Board on this 22 day of April, 1999.

CHAIRMAN OF CITY PLANNING BOARD: *[Signature]*

REVIEW OF DOUGLAS COUNTY ENGINEER
 This plat of VINTAGE OAKS (Lots numbered as shown) was reviewed by the office of the Douglas County Engineer on this 22 day of April, 1999.
 DOUGLAS COUNTY ENGINEER: *[Signature]*



LANE BUILDING CORP.
 Jerry L. Standerford, President

[Signature]
 Date: 4-17-99

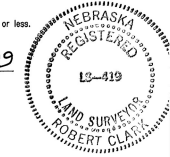
VINTAGE OAKS

LOTS 105 THRU 201 INCLUSIVE
 BEING A PLATING OF PART OF THE SOUTH 1/2 OF SECTION 10, T14N, R17E OF THE 6TH PA., DOUGLAS COUNTY, NEBRASKA.

SURVEYOR'S CERTIFICATE

I hereby certify that I have made a ground survey of the subdivision described herein and that temporary monuments have been placed on the boundary of the within plot and that a bond has been furnished to the City of Omaha to ensure placing of permanent monuments and stakes at all corners of all lots, streets, angle points and ends of all curves in Vintage Oaks (the lots numbered as shown) being a plat of part of the South 1/2 of the SW 1/4 of Section 10, Township 14 North, Range 11 East of the 6th P.M., Douglas County, Nebraska, more particularly described as follows:
 Beginning at the Southwest corner of Lot 210, Mission Ridge (Lots 189 thru 210, inclusive), a subdivision located in the North 1/2 of said SW 1/4 of Section 10, said point also being on the Eastern right-of-way line of 165th Avenue, said point also being on the North line of said South 1/2 of the SW 1/4 of Section 10; thence NB89°55'36"E (assumed bearing) along said North line of the South 1/2 of the SW 1/4 of Section 10, said line also being the South line of said Mission Ridge (Lots 189 thru 210, inclusive), and also along the South line of Mission Ridge (Lots 205 thru 330, inclusive), a subdivision located in part of the NE 1/4 of said SW 1/4 of Section 10, a distance of 1178.25 feet to the Northwest corner of Lot 55, Vintage Oaks (Lots 18 thru 104, inclusive), a subdivision located in said South 1/2 of the SW 1/4 of Section 10; thence along the Western line of said Vintage Oaks (Lots 18 thru 104, inclusive) on the following described courses: thence S01°04'24"E, a distance of 110.00 feet; thence S89°55'36"W, a distance of 4.21 feet; thence West along a curve to the left with a radius of 210.17 feet, a distance of 35.42 feet; said curve having a long chord which bears S84°05'53"W, a distance of 35.38 feet; thence S10°42'59"E, a distance of 159.83 feet; thence S17°41'02"W, a distance of 36.27 feet; thence S04°35'48"W, a distance of 80.30 feet; thence S08°11'27"W, a distance of 60.94 feet; thence S12°05'33"W, a distance of 60.94 feet; thence S19°53'48"W, a distance of 60.94 feet; thence S19°59'39"W, a distance of 60.94 feet; thence S19°53'48"W, a distance of 60.94 feet; thence S20°05'05"W, a distance of 60.93 feet; thence S28°32'06"W, a distance of 53.89 feet; thence S14°44'53"W, a distance of 55.86 feet; thence N79°18'54"W, a distance of 160.47 feet; thence North along a curve to the right with a radius of 445.00 feet, a distance of 19.20 feet; said curve having a long chord which bears N11°50'18"E, a distance of 19.20 feet; thence S20°05'05"W, a distance of 60.93 feet; thence S08°11'27"W, a distance of 60.94 feet; thence S12°05'33"W, a distance of 60.94 feet; thence S19°53'48"W, a distance of 60.94 feet; thence S19°59'39"W, a distance of 60.94 feet; thence S19°53'48"W, a distance of 60.94 feet; thence S20°05'05"W, a distance of 60.93 feet; thence S28°32'06"W, a distance of 53.89 feet; thence S14°44'53"W, a distance of 55.86 feet; thence North along a curve to the left with a radius of 200.00 feet, a distance of 113.59 feet; said curve having a long chord which bears N07°03'47"W, a distance of 112.16 feet; thence North along a curve to the right with a radius of 395.00 feet, a distance of 68.14 feet; said curve having a long chord which bears N32°28'22"W, a distance of 604.36 feet; thence North along a curve to the left with a radius of 345.00 feet, a distance of 87.56 feet; said curve having a long chord which bears N08°11'52"E, a distance of 87.33 feet; thence N01°04'24"W, a distance of 244.18 feet to the point of beginning.

Said tract of land contains an area of 22.319 acres, more or less.
 Robert Clark, LS-419, Date: 4-17-99



APPROVAL OF CITY ENGINEER OF OMAHA
 I hereby approve this plat of VINTAGE OAKS (Lots numbered as shown) as to the Design Standards this 22 day of April, 1999.
 City Engineer: *[Signature]*

I hereby certify that adequate provisions have been made for compliance with Chapter 53 of the Omaha Municipal Code.
 City Engineer: *[Signature]*, Date: September 14, 1999



E&A CONSULTING GROUP
 12001 'D' STREET - OMAHA, NE 68137 - (402) 885-7000 - FAX (402) 885-3300

VINTAGE OAKS
 LOTS 105 THRU 201 INCLUSIVE
 OMAHA, NEBRASKA

FINAL PLAT

DATE: 4-2-99
 DRAWN BY: ALS
 CHECKED BY: ALS
 SCALE: 1"=100'
 SHEET NO: 1 OF 1