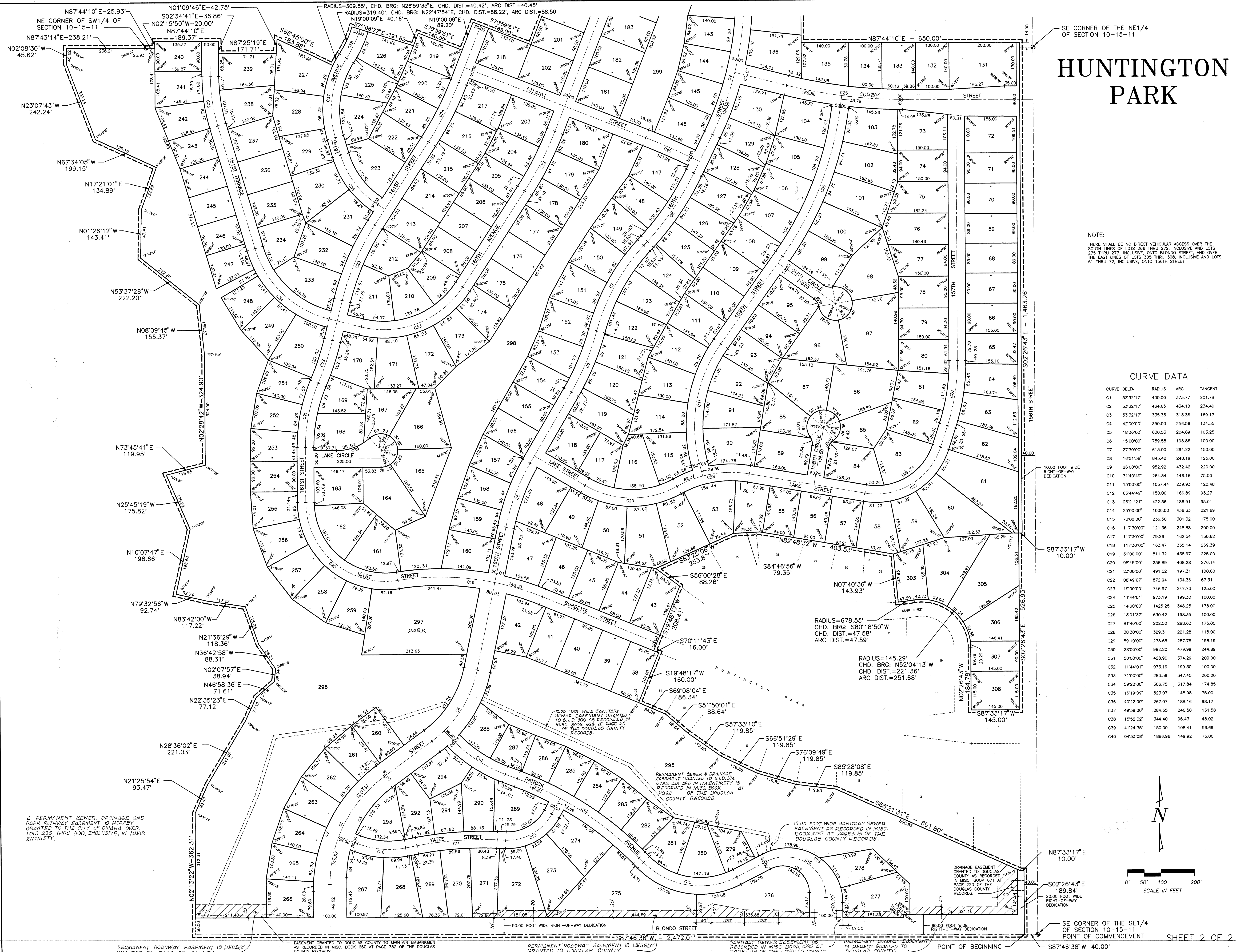




CG # 30  
2 OF 2  
Final Plat

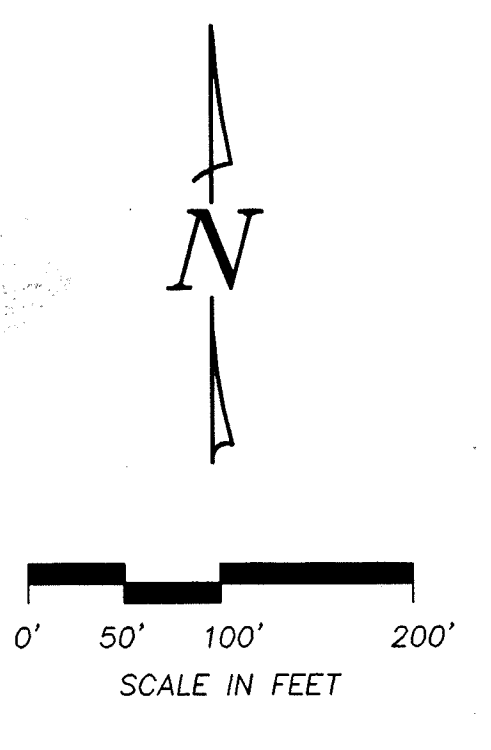
# HUNTINGTON PARK



NOTE:  
THERE SHALL BE NO DIRECT VEHICULAR ACCESS OVER THE SOUTH LINES OF LOTS 266 THRU 272, INCLUSIVE, AND LOTS 275 THRU 277, INCLUSIVE, ONTO BLONDO STREET, AND OVER THE EAST LINES OF LOTS 305 THRU 308, INCLUSIVE, AND LOTS 61 THRU 72, INCLUSIVE, ONTO 156TH STREET.

### CURVE DATA

CURVE DELTA	RADIUS	ARC	TANGENT
C1	53°32'17"	400.00	373.77
C2	53°32'17"	464.65	434.18
C3	53°32'17"	335.35	313.36
C4	42°00'00"	350.00	256.56
C5	18°36'00"	630.53	204.69
C6	15°00'00"	759.58	198.86
C7	27°30'00"	613.00	294.22
C8	16°51'38"	843.42	248.19
C9	26°00'00"	952.92	432.42
C10	31°40'49"	264.34	146.16
C11	13°00'00"	1057.44	239.93
C12	63°44'49"	150.00	166.89
C13	25°21'21"	422.36	186.91
C14	25°00'00"	1000.00	436.33
C15	73°00'00"	236.50	301.32
C16	117°30'00"	121.36	248.88
C17	117°30'00"	79.26	162.54
C18	117°30'00"	163.47	335.14
C19	31°00'00"	811.32	438.97
C20	98°45'00"	236.89	408.28
C21	23°00'00"	329.31	221.28
C22	08°49'07"	872.94	134.36
C23	19°00'00"	746.97	247.70
C24	11°44'01"	973.19	199.30
C25	14°00'00"	1425.25	348.25
C26	18°01'37"	630.42	198.35
C27	81°40'00"	202.50	288.63
C28	38°30'00"	329.31	221.28
C29	59°10'00"	278.65	287.75
C30	28°00'00"	982.20	479.99
C31	50°00'00"	428.90	374.29
C32	11°44'01"	973.19	199.30
C33	71°00'00"	280.39	347.45
C34	59°22'00"	306.75	317.84
C35	16°19'09"	523.07	148.98
C36	40°22'00"	267.07	188.16
C37	49°38'00"	284.55	246.50
C38	15°52'32"	344.40	95.43
C39	41°24'35"	150.00	108.41
C40	04°33'08"	1886.96	149.92



AS SHOWN
scale:
date:
drawn by:
checked by:
revision:

## HUNTINGTON PARK

### FINAL PLAT

**THOMPSON, DREESSEN & DORNER**  
Consulting Engineers & Land Surveyors  
10836 OLD MILL ROAD  
OMAHA, NE 68154  
(402) 330 - 8860