

FILED SAPPY CO. ME.
 INSTRUMENT NUMBER
 2001 MAY 16 P 4:02.9
 REGISTER OF DEEDS

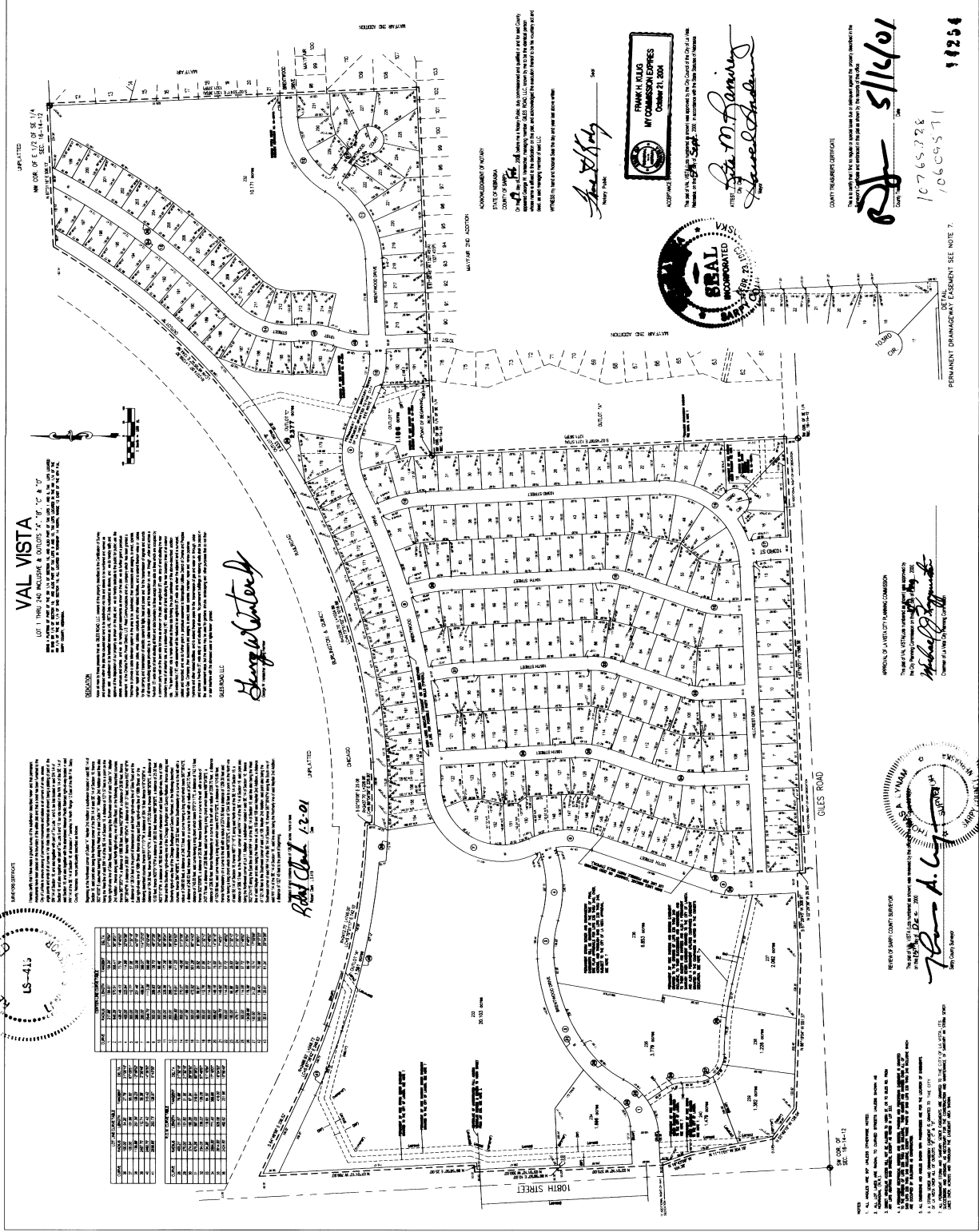
Counter 11354
 Verify 11354
 D.E. 11354
 Proof 11354
 Fee \$ 137.50
 Ck Cash Crd/EF

Steve D. Sapp
 REGISTER OF DEEDS

TAKES ASSESSED AND LEVIED FOR THE
 CURRENT YEAR ARE NEITHER DUE NOR
 PAID. TREASURERS CERTIFICATION
 IS ONLY VALID UNTIL DECEMBER 30TH
 OF THIS YEAR.



E&A CONSULTING GROUP, INC.
 ENGINEERS • PLANNERS • SURVEYORS
 VAL VISTA
 LAMAR, MISSOURI
 FINAL PLAN



VAL VISTA

LOT 1, 1800, AND INCLUDES & BORDERS A, B, C, D, E, F, G, H, I, J, K, L, M, N, O, P, Q, R, S, T, U, V, W, X, Y, Z, AA, AB, AC, AD, AE, AF, AG, AH, AI, AJ, AK, AL, AM, AN, AO, AP, AQ, AR, AS, AT, AU, AV, AW, AX, AY, AZ, BA, BB, BC, BD, BE, BF, BG, BH, BI, BJ, BK, BL, BM, BN, BO, BP, BQ, BR, BS, BT, BU, BV, BW, BX, BY, BZ, CA, CB, CC, CD, CE, CF, CG, CH, CI, CJ, CK, CL, CM, CN, CO, CP, CQ, CR, CS, CT, CU, CV, CW, CX, CY, CZ, DA, DB, DC, DD, DE, DF, DG, DH, DI, DJ, DK, DL, DM, DN, DO, DP, DQ, DR, DS, DT, DU, DV, DW, DX, DY, DZ, EA, EB, EC, ED, EE, EF, EG, EH, EI, EJ, EK, EL, EM, EN, EO, EP, EQ, ER, ES, ET, EU, EV, EW, EX, EY, EZ, FA, FB, FC, FD, FE, FF, FG, FH, FI, FJ, FK, FL, FM, FN, FO, FP, FQ, FR, FS, FT, FU, FV, FW, FX, FY, FZ, GA, GB, GC, GD, GE, GF, GG, GH, GI, GJ, GK, GL, GM, GN, GO, GP, GQ, GR, GS, GT, GU, GV, GW, GX, GY, GZ, HA, HB, HC, HD, HE, HF, HG, HH, HI, HJ, HK, HL, HM, HN, HO, HP, HQ, HR, HS, HT, HU, HV, HW, HX, HY, HZ, IA, IB, IC, ID, IE, IF, IG, IH, II, IJ, IK, IL, IM, IN, IO, IP, IQ, IR, IS, IT, IU, IV, IW, IX, IY, IZ, JA, JB, JC, JD, JE, JF, JG, JH, JI, JJ, JK, JL, JM, JN, JO, JP, JQ, JR, JS, JT, JU, JV, JW, JX, JY, JZ, KA, KB, KC, KD, KE, KF, KG, KH, KI, KJ, KK, KL, KM, KN, KO, KP, KQ, KR, KS, KT, KU, KV, KW, KX, KY, KZ, LA, LB, LC, LD, LE, LF, LG, LH, LI, LJ, LK, LL, LM, LN, LO, LP, LQ, LR, LS, LT, LU, LV, LW, LX, LY, LZ, MA, MB, MC, MD, ME, MF, MG, MH, MI, MJ, MK, ML, MM, MN, MO, MP, MQ, MR, MS, MT, MU, MV, MW, MX, MY, MZ, NA, NB, NC, ND, NE, NF, NG, NH, NI, NJ, NK, NL, NM, NN, NO, NP, NQ, NR, NS, NT, NU, NV, NW, NX, NY, NZ, OA, OB, OC, OD, OE, OF, OG, OH, OI, OJ, OK, OL, OM, ON, OO, OP, OQ, OR, OS, OT, OU, OV, OW, OX, OY, OZ, PA, PB, PC, PD, PE, PF, PG, PH, PI, PJ, PK, PL, PM, PN, PO, PP, PQ, PR, PS, PT, PU, PV, PW, PX, PY, PZ, QA, QB, QC, QD, QE, QF, QG, QH, QI, QJ, QK, QL, QM, QN, QO, QP, QQ, QR, QS, QT, QU, QV, QW, QX, QY, QZ, RA, RB, RC, RD, RE, RF, RG, RH, RI, RJ, RK, RL, RM, RN, RO, RP, RQ, RR, RS, RT, RU, RV, RW, RX, RY, RZ, SA, SB, SC, SD, SE, SF, SG, SH, SI, SJ, SK, SL, SM, SN, SO, SP, SQ, SR, SS, ST, SU, SV, SW, SX, SY, SZ, TA, TB, TC, TD, TE, TF, TG, TH, TI, TJ, TK, TL, TM, TN, TO, TP, TQ, TR, TS, TT, TU, TV, TW, TX, TY, TZ, UA, UB, UC, UD, UE, UF, UG, UH, UI, UJ, UK, UL, UM, UN, UO, UP, UQ, UR, US, UT, UY, UZ, VA, VB, VC, VD, VE, VF, VG, VH, VI, VJ, VK, VL, VM, VN, VO, VP, VQ, VR, VS, VT, VU, VV, VW, VX, VY, VZ, WA, WB, WC, WD, WE, WF, WG, WH, WI, WJ, WK, WL, WM, WN, WO, WP, WQ, WR, WS, WT, WU, WV, WW, WX, WY, WZ, XA, XB, XC, XD, XE, XF, XG, XH, XI, XJ, XK, XL, XM, XN, XO, XP, XQ, XR, XS, XT, XU, XV, XW, XX, XY, XZ, YA, YB, YC, YD, YE, YF, YG, YH, YI, YJ, YK, YL, YM, YN, YO, YP, YQ, YR, YS, YT, YU, YV, YW, YX, YY, YZ, ZA, ZB, ZC, ZD, ZE, ZF, ZG, ZH, ZI, ZJ, ZK, ZL, ZM, ZN, ZO, ZP, ZQ, ZR, ZS, ZT, ZU, ZV, ZW, ZX, ZY, ZZ.

George W. Cantor
 SUBDIVISION

Robert Clark
 22-01

APPROVED BY THE BOARD OF SUPERVISORS
 OF THE COUNTY OF LAMAR, MISSOURI
 MAY 16, 2001

APPROVED BY THE BOARD OF SUPERVISORS
 OF THE COUNTY OF LAMAR, MISSOURI
 MAY 16, 2001

APPROVED BY THE BOARD OF SUPERVISORS
 OF THE COUNTY OF LAMAR, MISSOURI
 MAY 16, 2001

APPROVED BY THE BOARD OF SUPERVISORS
 OF THE COUNTY OF LAMAR, MISSOURI
 MAY 16, 2001

APPROVED BY THE BOARD OF SUPERVISORS
 OF THE COUNTY OF LAMAR, MISSOURI
 MAY 16, 2001

APPROVED BY THE BOARD OF SUPERVISORS
 OF THE COUNTY OF LAMAR, MISSOURI
 MAY 16, 2001

APPROVED BY THE BOARD OF SUPERVISORS
 OF THE COUNTY OF LAMAR, MISSOURI
 MAY 16, 2001

APPROVED BY THE BOARD OF SUPERVISORS
 OF THE COUNTY OF LAMAR, MISSOURI
 MAY 16, 2001

APPROVED BY THE BOARD OF SUPERVISORS
 OF THE COUNTY OF LAMAR, MISSOURI
 MAY 16, 2001

APPROVED BY THE BOARD OF SUPERVISORS
 OF THE COUNTY OF LAMAR, MISSOURI
 MAY 16, 2001

APPROVED BY THE BOARD OF SUPERVISORS
 OF THE COUNTY OF LAMAR, MISSOURI
 MAY 16, 2001

APPROVED BY THE BOARD OF SUPERVISORS
 OF THE COUNTY OF LAMAR, MISSOURI
 MAY 16, 2001

APPROVED BY THE BOARD OF SUPERVISORS
 OF THE COUNTY OF LAMAR, MISSOURI
 MAY 16, 2001

APPROVED BY THE BOARD OF SUPERVISORS
 OF THE COUNTY OF LAMAR, MISSOURI
 MAY 16, 2001

APPROVED BY THE BOARD OF SUPERVISORS
 OF THE COUNTY OF LAMAR, MISSOURI
 MAY 16, 2001

APPROVED BY THE BOARD OF SUPERVISORS
 OF THE COUNTY OF LAMAR, MISSOURI
 MAY 16, 2001

APPROVED BY THE BOARD OF SUPERVISORS
 OF THE COUNTY OF LAMAR, MISSOURI
 MAY 16, 2001

APPROVED BY THE BOARD OF SUPERVISORS
 OF THE COUNTY OF LAMAR, MISSOURI
 MAY 16, 2001

APPROVED BY THE BOARD OF SUPERVISORS
 OF THE COUNTY OF LAMAR, MISSOURI
 MAY 16, 2001

APPROVED BY THE BOARD OF SUPERVISORS
 OF THE COUNTY OF LAMAR, MISSOURI
 MAY 16, 2001

APPROVED BY THE BOARD OF SUPERVISORS
 OF THE COUNTY OF LAMAR, MISSOURI
 MAY 16, 2001

APPROVED BY THE BOARD OF SUPERVISORS
 OF THE COUNTY OF LAMAR, MISSOURI
 MAY 16, 2001

APPROVED BY THE BOARD OF SUPERVISORS
 OF THE COUNTY OF LAMAR, MISSOURI
 MAY 16, 2001

APPROVED BY THE BOARD OF SUPERVISORS
 OF THE COUNTY OF LAMAR, MISSOURI
 MAY 16, 2001

APPROVED BY THE BOARD OF SUPERVISORS
 OF THE COUNTY OF LAMAR, MISSOURI
 MAY 16, 2001

APPROVED BY THE BOARD OF SUPERVISORS
 OF THE COUNTY OF LAMAR, MISSOURI
 MAY 16, 2001

APPROVED BY THE BOARD OF SUPERVISORS
 OF THE COUNTY OF LAMAR, MISSOURI
 MAY 16, 2001

APPROVED BY THE BOARD OF SUPERVISORS
 OF THE COUNTY OF LAMAR, MISSOURI
 MAY 16, 2001

APPROVED BY THE BOARD OF SUPERVISORS
 OF THE COUNTY OF LAMAR, MISSOURI
 MAY 16, 2001

APPROVED BY THE BOARD OF SUPERVISORS
 OF THE COUNTY OF LAMAR, MISSOURI
 MAY 16, 2001

APPROVED BY THE BOARD OF SUPERVISORS
 OF THE COUNTY OF LAMAR, MISSOURI
 MAY 16, 2001

APPROVED BY THE BOARD OF SUPERVISORS
 OF THE COUNTY OF LAMAR, MISSOURI
 MAY 16, 2001

APPROVED BY THE BOARD OF SUPERVISORS
 OF THE COUNTY OF LAMAR, MISSOURI
 MAY 16, 2001

APPROVED BY THE BOARD OF SUPERVISORS
 OF THE COUNTY OF LAMAR, MISSOURI
 MAY 16, 2001

APPROVED BY THE BOARD OF SUPERVISORS
 OF THE COUNTY OF LAMAR, MISSOURI
 MAY 16, 2001

APPROVED BY THE BOARD OF SUPERVISORS
 OF THE COUNTY OF LAMAR, MISSOURI
 MAY 16, 2001

APPROVED BY THE BOARD OF SUPERVISORS
 OF THE COUNTY OF LAMAR, MISSOURI
 MAY 16, 2001

APPROVED BY THE BOARD OF SUPERVISORS
 OF THE COUNTY OF LAMAR, MISSOURI
 MAY 16, 2001

APPROVED BY THE BOARD OF SUPERVISORS
 OF THE COUNTY OF LAMAR, MISSOURI
 MAY 16, 2001

APPROVED BY THE BOARD OF SUPERVISORS
 OF THE COUNTY OF LAMAR, MISSOURI
 MAY 16, 2001

APPROVED BY THE BOARD OF SUPERVISORS
 OF THE COUNTY OF LAMAR, MISSOURI
 MAY 16, 2001

APPROVED BY THE BOARD OF SUPERVISORS
 OF THE COUNTY OF LAMAR, MISSOURI
 MAY 16, 2001

FRANK H. KLUG
 MISSOURI COMMISSION EXPRES
 COMMISSIONER 21, 2001



Frank H. Klug
 MISSOURI COMMISSION EXPRES
 COMMISSIONER 21, 2001

COUNTY TREASURER CERTIFICATE
 5/11/01
 10765328
 10609571

10765328
 10609571

RESIDUAL DRAINAGE AND CESSPOOL SEE NOTE 7.

REVIEWED BY SAPPY COUNTY SURVEYORS
 THE STATE OF MISSOURI
 REGISTERED PROFESSIONAL SURVEYORS
 REGISTERED IN THE STATE OF MISSOURI
 REGISTERED PROFESSIONAL SURVEYORS
 REGISTERED IN THE STATE OF MISSOURI
 REGISTERED PROFESSIONAL SURVEYORS
 REGISTERED IN THE STATE OF MISSOURI

REVIEWED BY SAPPY COUNTY SURVEYORS
 THE STATE OF MISSOURI
 REGISTERED PROFESSIONAL SURVEYORS
 REGISTERED IN THE STATE OF MISSOURI
 REGISTERED PROFESSIONAL SURVEYORS
 REGISTERED IN THE STATE OF MISSOURI
 REGISTERED PROFESSIONAL SURVEYORS
 REGISTERED IN THE STATE OF MISSOURI

REVIEWED BY SAPPY COUNTY SURVEYORS
 THE STATE OF MISSOURI
 REGISTERED PROFESSIONAL SURVEYORS
 REGISTERED IN THE STATE OF MISSOURI
 REGISTERED PROFESSIONAL SURVEYORS
 REGISTERED IN THE STATE OF MISSOURI
 REGISTERED PROFESSIONAL SURVEYORS
 REGISTERED IN THE STATE OF MISSOURI