

SAUNDERS COUNTY PLANNING COMMISSION APPROVAL:

THIS FINAL PLAT OF "THOMAS LAKES THIRD ADDITION", WAS APPROVED BY THE SAUNDERS COUNTY PLANNING COMMISSION ON THIS 6th DAY OF August, 2002.

Chad D. Boone
CHAIRPERSON

DON CLARK
REGISTER OF DEEDS
SAUNDERS CO., NEBR.

02 MAR 20 PM 4: 00
BOOK 4 PAGE 261
OF PLAT INST# 386

Don

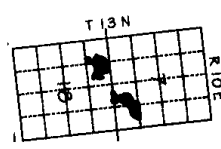
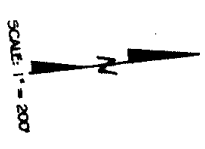
BUILDING SETBACK REQUIREMENTS

- RESIDENTIAL LAKESIDE
- 20' FRONTYARD
- 10' SIDEYARD
- 25' LAKESIDE YARD

- UTILITY EASEMENTS
- 10' FRONTYARD
- 10' SIDEYARD

LEGEND

- MONUMENT FOUND (SEE NOTES, UNLESS NOTED OTHERWISE)
- MONUMENT SET (SEE BR 2/27/04)
- (M) MEASURED DISTANCE
- (R) RECORDED DISTANCE
- (P) PLATTED DISTANCE



STATE OF NEBRASKA)
) 95
SAUNDERS COUNTY

ON THIS 12th DAY OF MARCH, 2002,
BEFORE ME A NOTARY PUBLIC IN AND FOR SAID COUNTY,
PERSONALLY CAME DENNIS M. AND SUSAN K. THOMAS,
KNOWN TO ME TO BE THE IDENTICAL PERSONS WHO SIGNED
THE FOREGOING INSTRUMENT, AND ACKNOWLEDGED THE
EXECUTION THEREOF TO BE THEIR VOLUNTARY ACT AND DEED.

WITNESS MY HAND AND OFFICIAL SEAL ON THE DATE LAST
AFORESAID.


NOTARY PUBLIC

MY COMMISSION EXPIRES



SAUNDERS COUNTY BOARD OF SUPERVISORS APPROVAL:

THIS FINAL PLAT OF "THOMAS LAKES THIRD ADDITION", WAS APPROVED BY
THE SAUNDERS COUNTY BOARD OF SUPERVISORS ON THIS 19th DAY
OF MARCH, 2002.


CHAIRMAN OF THE BOARD

ATTEST: 
SAUNDERS COUNTY CLERK

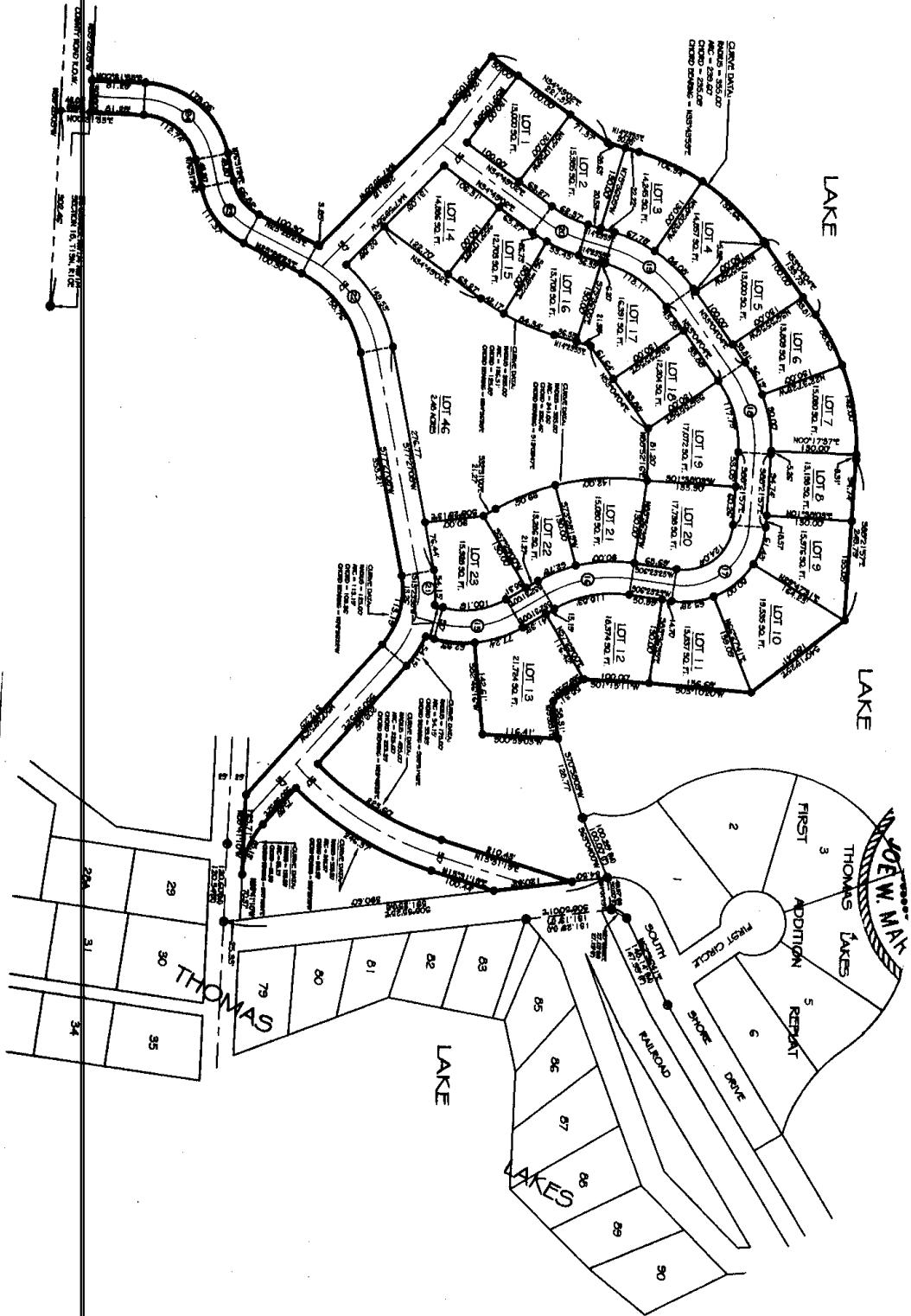


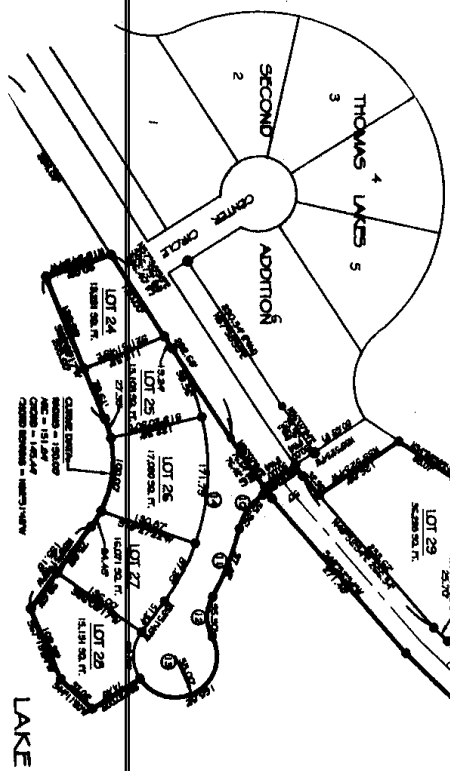
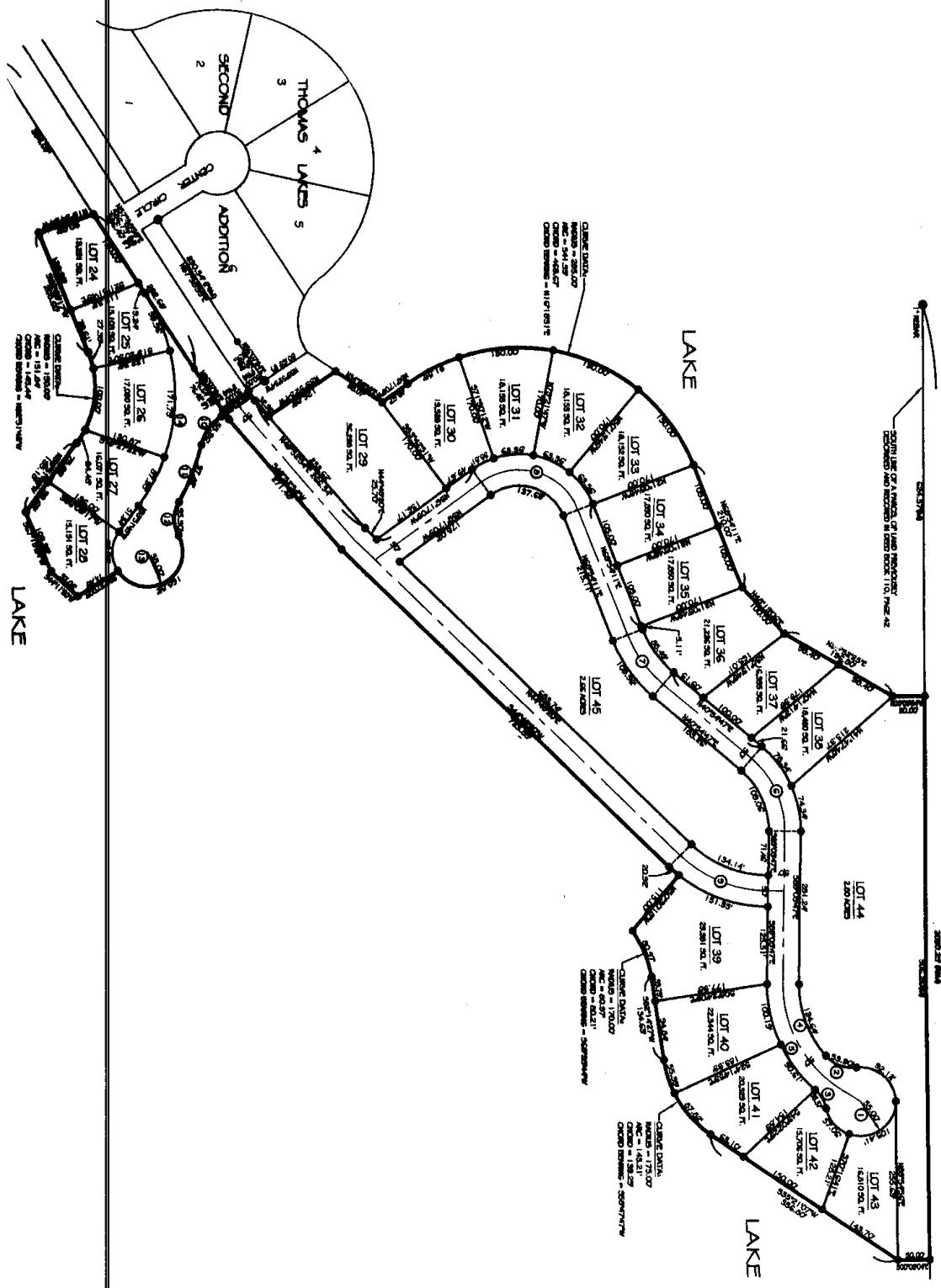
SAUNDERS COUNTY TREASURER'S CERTIFICATION:

THIS IS TO CERTIFY THAT I FIND NO REGULAR OR SPECIAL TAXES
DELINQUENT AGAINST THE PROPERTY DESCRIBED IN THE PERIMETER
DESCRIPTION AND EMBRACED WITHIN THIS PLAT AS SHOWN BY THE
RECORDS OF THIS OFFICE ON THIS TWELFTH DAY OF
MARCH, 2002.


SAUNDERS COUNTY TREASURER







LAKE

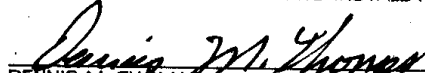
LAKE

LAKE

REPRODUCED FROM THE ORIGINAL RECORDS OF THE COUNTY OF COCONINO, ARIZONA

DEDICATION:

KNOW ALL MEN BY THESE PRESENTS: THAT DENNIS M. AND SUSAN K. THOMAS, HUSBAND AND WIFE, AND THE MELVIN THOMAS TRUST, OWNERS AND PROPRIETORS OF THE PROPERTY DESCRIBED WITHIN THE PERIMETER DESCRIPTION AND EMBRACED WITHIN THIS PLAT, HAVE CAUSED SAID LAND TO BE SUBDIVIDED INTO LOTS AND STREETS, TO BE NAMED AND NUMBERED AS SHOWN, SAID SUBDIVISION TO BE HEREAFTER KNOWN AS "THOMAS LAKES THIRD ADDITION". SAID OWNERS HEREBY RATIFY AND APPROVE OF THE DISPOSITION OF THEIR PROPERTY, AS SHOWN ON THIS PLAT. SAID OWNERS HEREBY DEDICATE TO THE LICENSEES OF SAID SUBDIVISION AND THEIR INVITEES ALL STREETS, AS SHOWN ON THIS PLAT, FOR INGRESS AND EGRESS PURPOSES. SAID STREETS TO BE NAMED AS SHOWN. SAID OWNERS FURTHER GRANT 10 FOOT WIDE UTILITY EASEMENTS ALONG THE FRONTYARD AND SIDEYARD LINES OF EACH LOT TOGETHER WITH ALL STREETS BEING PLATTED WITHIN THOMAS LAKES THIRD ADDITION. SAID UTILITY EASEMENTS ARE RESERVED FOR THE USE OF PUBLIC UTILITIES, AND ARE SUBJECT TO THE PARAMOUNT RIGHT OF THE PUBLIC UTILITY TO INSTALL, REPAIR, REPLACE AND MAINTAIN ITS INSTALLATIONS.

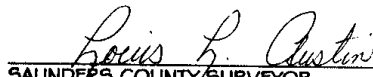

DENNIS M. THOMAS


SUSAN K. THOMAS


DENNIS M. THOMAS, FOR THE MELVIN THOMAS TRUST

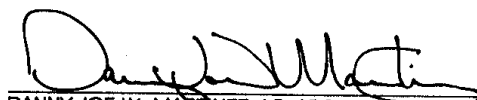
SAUNDERS COUNTY SURVEYOR'S APPROVAL:

I, HEREBY APPROVE OF THE NUMBERING OF LOTS 1 THROUGH 46 OF "THOMAS LAKES THIRD ADDITION", A SUBDIVISION LOCATED IN SECTIONS 7 AND 18, TOWNSHIP 13 NORTH, RANGE 10 EAST OF THE SIXTH P.M., SAUNDERS COUNTY, NEBRASKA.
APPROVED ON THIS 20TH DAY OF MARCH, 2002.


SAUNDERS COUNTY SURVEYOR
LOUIS L. AUSTIN

SURVEYOR'S STATEMENT:

I, DANNY JOE W. MARTINEZ, A REGISTERED LAND SURVEYOR, DO HEREBY CERTIFY THAT "THOMAS LAKES THIRD ADDITION" HAS BEEN SURVEYED BY ME OR UNDER MY SUPERVISION, AND THAT THE LEGAL DESCRIPTION OF THE BOUNDARY OF "THOMAS LAKES THIRD ADDITION" IS AS STATED IN THE PERIMETER DESCRIPTION. PERMANENT MONUMENTS HAVE BEEN ESTABLISHED AT THE LOCATIONS SHOWN ON THIS PLAT.


DANNY JOE W. MARTINEZ, LS 498

01/02/02
DATE

CONSULTANT:

MERIDIAN DEVELOPMENT SERVICES, INC.

P.O. BOX 610

ARLINGTON, NEBRASKA 68002

(402) 478-5367 OFFICE / 478-5388 FAX

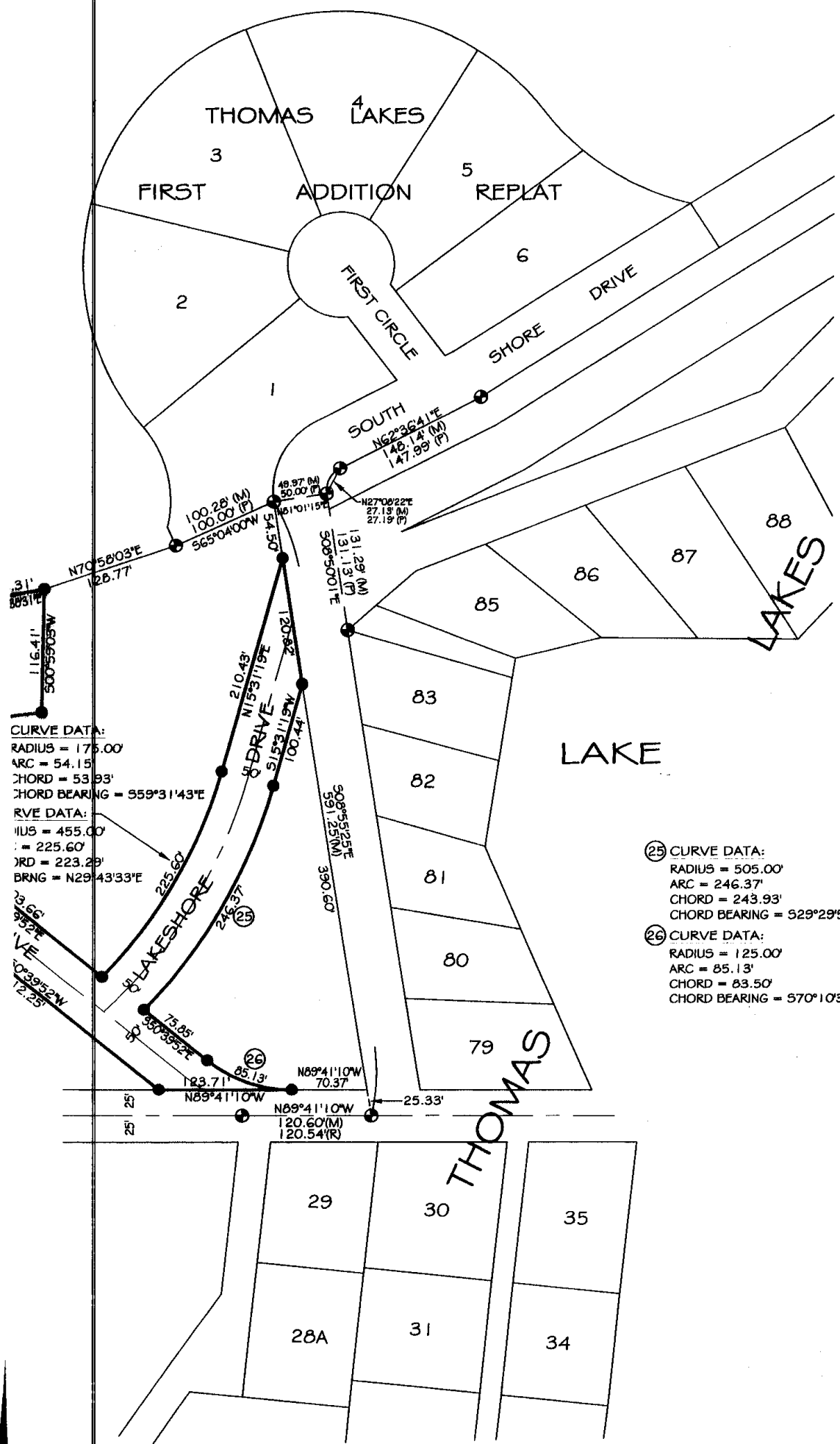
SOUTHWESTERLY ON A 505.00 FOOT RADIUS CURVE TO THE RIGHT AN ARC DISTANCE OF 246.37 FEET, THE CHORD OF SAID CURVE S29°29'53"W A DISTANCE OF 243.93 FEET; THENCE S50°39'52"E, A DISTANCE OF 75.85 FEET TO A POINT OF CURVATURE; THENCE SOUTHEASTERLY ON A 125.00 FOOT RADIUS CURVE TO THE LEFT AN ARC DISTANCE OF 85.13 FEET TO A POINT ON THE NORTH LINE OF AN EXISTING STREET PLATTED WITHIN THOMAS LAKES SUBDIVISION, THE CHORD OF SAID CURVE BEARS S70°10'31"E A DISTANCE OF 83.50 FEET; THENCE N89°41'10"W ON SAID NORTH LINE, A DISTANCE OF 123.71 FEET; THENCE N50°39'52"W, A DISTANCE OF 312.25 FEET TO A POINT OF CURVATURE; THENCE NORTHWESTERLY ON A 125.00 FOOT RADIUS CURVE TO THE LEFT AN ARC DISTANCE OF 113.19 FEET TO A POINT OF TANGENCY, THE CHORD OF SAID CURVE BEARS N76°36'22"W A DISTANCE OF 109.36 FEET; THENCE S77°27'08"W, A DISTANCE OF 353.21 FEET TO A POINT OF CURVATURE; THENCE SOUTHWESTERLY ON A 175.00 FOOT RADIUS CURVE TO THE LEFT AN ARC DISTANCE OF 158.76 FEET TO A POINT OF TANGENCY, THE CHORD OF SAID CURVE BEARS S51°27'46"W A DISTANCE OF 153.37 FEET; THENCE S25°28'23"W, A DISTANCE OF 100.30 FEET TO A POINT OF CURVATURE; THENCE SOUTHWESTERLY ON A 125.00 FOOT RADIUS CURVE TO THE RIGHT AN ARC DISTANCE OF 111.37 FEET TO A POINT OF TANGENCY, THE CHORD OF SAID CURVE BEARS S50°59'53"W A DISTANCE OF 107.73 FEET; THENCE S76°31'24"W, A DISTANCE OF 43.80 FEET TO A POINT OF CURVATURE; THENCE SOUTHWESTERLY ON A 85.00 FOOT RADIUS CURVE TO THE LEFT AN ARC DISTANCE OF 112.74 FEET TO A POINT OF TANGENCY, THE CHORD OF SAID CURVE BEARS S38°31'39"W A DISTANCE OF 104.65 FEET; THENCE S00°31'55"W, A DISTANCE OF 81.29 FEET TO THE TRUE POINT OF BEGINNING,

TOGETHER WITH A PARCEL OF LAND BEING PART OF GOVERNMENT LOT 5 AND PART OF THE SOUTHEAST QUARTER OF SECTION 7, AND PART OF GOVERNMENT LOT 1 OF SECTION 18, ALL IN TOWNSHIP 13 NORTH, RANGE 10 EAST OF THE SIXTH P.M., SAUNDERS COUNTY, NEBRASKA, BEING DESCRIBED AS FOLLOWS: COMMENCING AT THE SOUTHWESTERLY CORNER OF LOT 6 OF THOMAS LAKES SECOND ADDITION; THENCE N57°38'35"E (ASSUMED BEARING) ON THE SOUTHEASTERLY LINE OF SAID LOT 6, A DISTANCE OF 230.54 FEET; THENCE N56°07'24"E CONTINUING ON SAID SOUTHEASTERLY LINE, A DISTANCE OF 75.56 FEET TO THE SOUTHEASTERLY CORNER OF SAID LOT 6; THENCE S33°52'34"E ON THE NORTHEASTERLY LINE OF THOMAS LAKES SECOND ADDITION, A DISTANCE OF 30.00 FEET TO THE NORTHEAST CORNER OF RAILROAD DRIVE, AS PLATTED IN SAID THOMAS LAKES SECOND ADDITION, THIS BEING THE TRUE POINT OF BEGINNING; THENCE N56°07'24"E ON THE NORTHEASTERLY EXTENSION OF THE NORTH LINE OF SAID RAILROAD ADDITION, A DISTANCE OF 17.27 FEET; THENCE N49°52'34"E, A DISTANCE OF 32.92 FEET; THENCE N33°52'34"W, A DISTANCE OF 126.89 FEET; THENCE N34°28'59"E, A DISTANCE OF 88.07 FEET; THENCE N36°17'09"W, A DISTANCE OF 49.67 FEET TO A POINT OF CURVATURE; THENCE NORTHERLY ON A 295.00 FOOT RADIUS CURVE TO THE RIGHT AN ARC DISTANCE OF 541.59 FEET TO A POINT OF TANGENCY, THE CHORD OF SAID CURVE BEARS N16°18'31"E A DISTANCE OF 468.67 FEET; THENCE N68°54'11"E, A DISTANCE OF 210.00 FEET; THENCE N48°19'06"E, A DISTANCE OF 100.00 FEET; THENCE N30°52'25"E, A DISTANCE OF 196.80 FEET; THENCE N00°05'04"W, A DISTANCE OF 50.00 FEET TO A POINT ON THE SOUTH LINE OF A PARCEL OF LAND PREVIOUSLY DESCRIBED AND RECORDED IN DEED BOOK 110, PAGE 42; THENCE N89°54'56"E ON SAID SOUTH LINE, A DISTANCE OF 906.25 FEET; THENCE S00°05'04"E PERPENDICULAR TO SAID SOUTH LINE, A DISTANCE OF 50.00 FEET; THENCE S35°21'07"W, A DISTANCE OF 356.80 FEET TO A POINT OF CURVATURE; THENCE SOUTHWESTERLY ON A 175.00 FOOT RADIUS CURVE TO THE RIGHT AN ARC DISTANCE OF 143.21 FEET TO A POINT OF TANGENCY, THE CHORD OF SAID CURVE BEARS S58°47'47"W A DISTANCE OF 139.25 FEET; THENCE S82°14'27"W, A DISTANCE OF 134.63 FEET TO A POINT OF CURVATURE; THENCE SOUTHWESTERLY ON A 170.00 FOOT RADIUS CURVE TO THE LEFT AN ARC DISTANCE OF 80.97 FEET, THE CHORD OF SAID CURVE BEARS S68°35'44"W A DISTANCE OF 80.21 FEET; THENCE N50°30'18"W, A DISTANCE OF 115.00 FEET; THENCE SOUTHWESTERLY ON A 225.00 FOOT RADIUS CURVE TO THE RIGHT AN ARC DISTANCE OF 20.92 FEET TO A POINT OF TANGENCY, THE CHORD OF SAID CURVE BEARS S42°09'31"W A DISTANCE OF 20.91 FEET; THENCE S44°48'20"W, A DISTANCE OF 723.85 FEET; THENCE S49°52'34"W, A DISTANCE OF 271.48 FEET; THENCE S56°07'24"W, A DISTANCE OF 10.88 FEET; THENCE S33°52'36"E, A DISTANCE OF 7.62 FEET TO A POINT OF CURVATURE; THENCE SOUTHEASTERLY ON A 75.00 FOOT RADIUS CURVE TO THE LEFT AN ARC DISTANCE OF 55.96 FEET TO A POINT OF REVERSE CURVATURE, THE CHORD OF SAID CURVE BEARS S55°15'00"E A DISTANCE OF 54.67 FEET; THENCE SOUTHEASTERLY ON A 350.00 FOOT RADIUS CURVE TO THE RIGHT AN ARC DISTANCE OF 97.42 FEET TO A POINT OF REVERSE CURVATURE, THE CHORD OF SAID CURVE BEARS S68°38'57"E A DISTANCE OF 97.11 FEET; THENCE EASTERLY ON A 55.00 FOOT RADIUS CURVE TO THE LEFT AN ARC DISTANCE OF 55.50 FEET TO A POINT OF REVERSE CURVATURE, THE CHORD OF SAID CURVE BEARS S89°34'51"E A DISTANCE OF 53.17 FEET; THENCE SOUTHEASTERLY ON A 55.00 FOOT RADIUS CURVE TO THE RIGHT AN ARC DISTANCE OF 168.82 FEET, THE CHORD OF SAID CURVE BEARS S30°33'06"E A DISTANCE OF 109.93 FEET; THENCE S82°37'00"E, A DISTANCE OF 74.45 FEET; THENCE S44°11'30"W, A DISTANCE OF 57.06 FEET; THENCE S67°19'24"W, A DISTANCE OF 102.39 FEET; THENCE N53°51'43"W, A DISTANCE OF 135.18 FEET TO A POINT OF CURVATURE; THENCE WESTERLY ON A 150.00 FOOT RADIUS CURVE TO THE LEFT AN ARC DISTANCE OF 151.84 FEET TO A POINT OF TANGENCY, THE CHORD OF SAID CURVE BEARS N82°51'43"W A DISTANCE OF 115.44 FEET; THENCE S68°08'17"W, A DISTANCE OF 205.60 FEET; THENCE N18°34'24"W, A DISTANCE OF 90.00 FEET TO A POINT ON THE SOUTHEASTERLY LINE OF SAID RAILROAD DRIVE; THENCE N57°38'35"E ON SAID SOUTHEASTERLY LINE, A DISTANCE OF 292.68 FEET; THENCE N56°07'24"E CONTINUING ON SAID SOUTHEASTERLY LINE, A DISTANCE OF 75.64 FEET TO THE SOUTHEAST CORNER OF SAID RAILROAD DRIVE; THENCE N33°52'34"W ON THE NORTHEASTERLY LINE OF SAID RAILROAD DRIVE, A DISTANCE OF 50.00 FEET TO THE TRUE POINT OF BEGINNING, ALL OF THE ABOVE CONTAINING 32.74 ACRES, MORE OR LESS.

"THOMAS LAKES THIRD ADDITION"

PART OF THE SOUTH HALF OF SECTION 7 AND PART OF THE NORTH HALF OF SECTION 18, ALL IN TOWNSHIP 13 NORTH, RANGE 10 EAST OF THE SIXTH P.M., SAUNDERS COUNTY, NEBRASKA

PROJECT NO.: SD01-004
DRAWN BY: DJM
DATE: 07/23/01
FIELDBOOK: MERIDIAN 2001-02
DWG FILE:
SCALE: 1" = 200'
REVISION DATE:
SHEET 1 OF 4



CURVE DATA:
 RADIUS = 175.00'
 ARC = 54.15'
 CHORD = 53.93'
 CHORD BEARING = S59°31'43"E

RVE DATA:
 RADIUS = 455.00'
 ARC = 225.60'
 CHORD = 223.29'
 CHORD BEARING = N29°43'33"E

Ⓔ CURVE DATA:
 RADIUS = 505.00'
 ARC = 246.37'
 CHORD = 243.93'
 CHORD BEARING = S29°29'53"W

Ⓔ CURVE DATA:
 RADIUS = 125.00'
 ARC = 85.13'
 CHORD = 83.50'
 CHORD BEARING = S70°10'31"E

THOMAS LAKES
 3
 FIRST ADDITION REPLAT
 2
 5
 6

88
 87
 86
 85
 LAKES

LAKE

THOMAS

29 30 35
 28A 31 34

31'
 N70°58'03"E
 126.77
 116.41'
 N89°55'00"E
 500.5000

100.26' (M)
 100.00' (P)
 S65°04'00"W
 54.50'

49.97' (M)
 50.00' (P)
 N61°01'15"E

131.29' (M)
 131.13' (P)
 S08°50'01"E

27.15' (M)
 27.15' (P)
 N27°08'22"E

210.43'
 N15°31'19"E
 120.82'

144.01'
 N51°13'51"E
 100.40'

225.60'
 S08°52'25"E
 591.25' (M)
 390.60'

246.37' Ⓔ

75.85'
 S50°39'52"E

123.71'
 N89°41'10"W

85.13' Ⓔ

70.37'
 N89°41'10"W

25.33'

120.60' (M)
 120.54' (R)

BUILDING SETBACK REQUIREMENTS

- (RESIDENTIAL LAKESIDE)
- 20' FRONTYARD
- 10' SIDERYARD
- 25' LAKESIDE YARD

UTILITY EASEMENTS

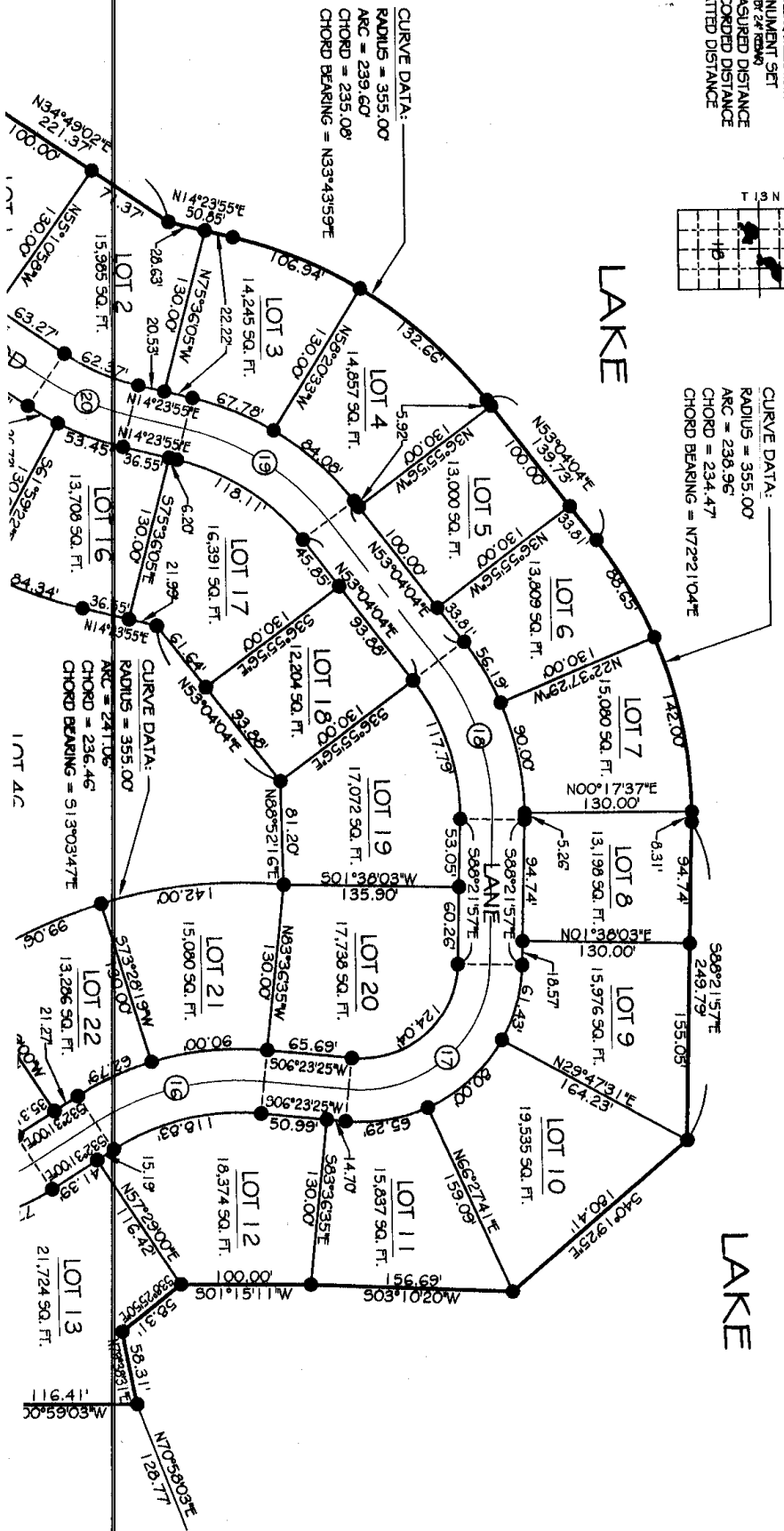
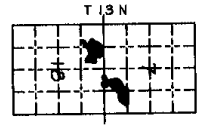
- 10' FRONTYARD
- 10' SIDERYARD

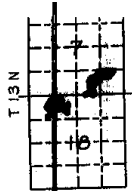
LEGEND

- MONUMENT FOUND
- MONUMENT SET
- (M) MEASURED DISTANCE
- (R) RECORDED DISTANCE
- (P) PLATTED DISTANCE

SCALE: 1" = 100'

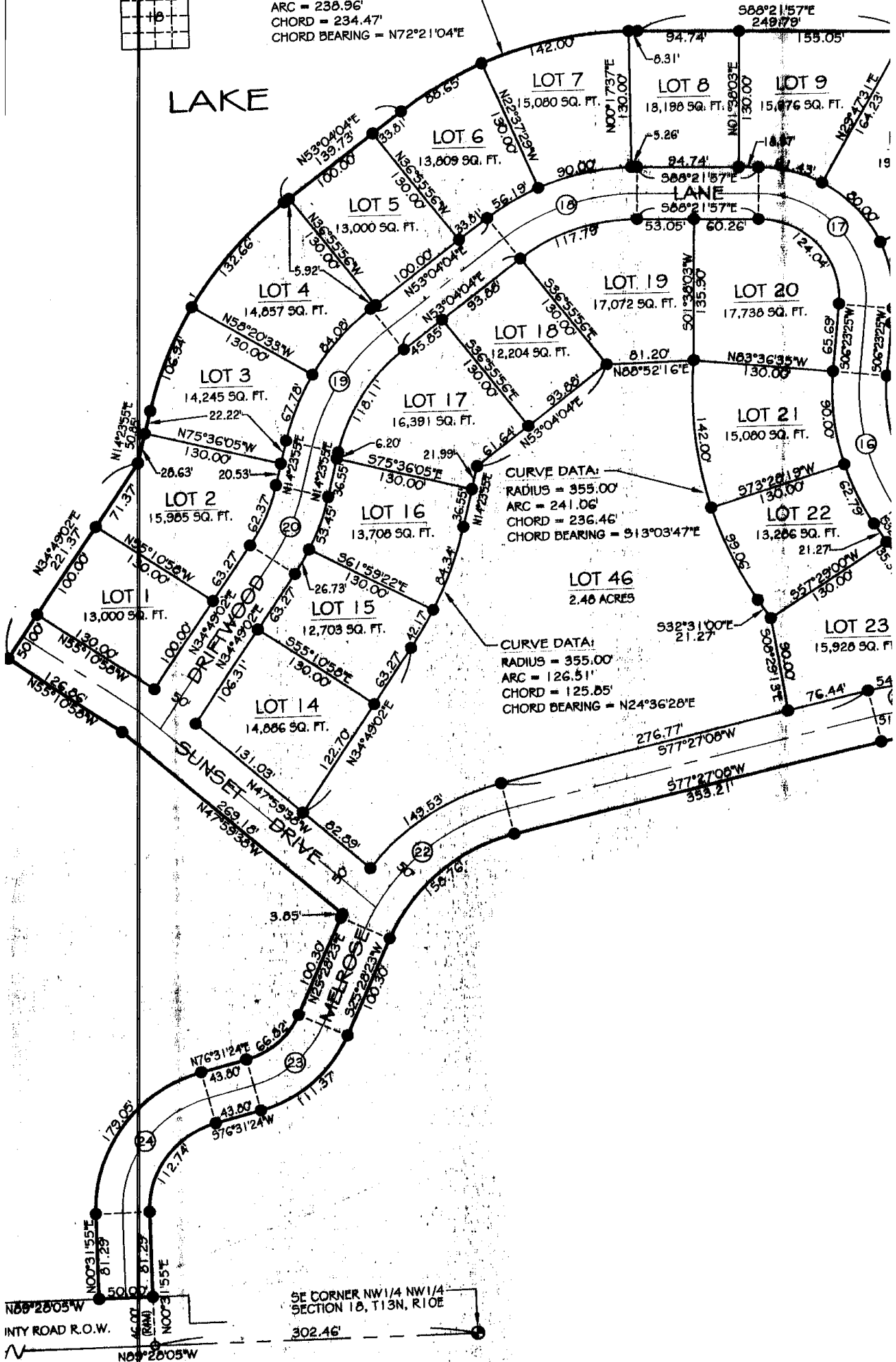
SANDERS COUNTY
NEBRASKA
R 10 E

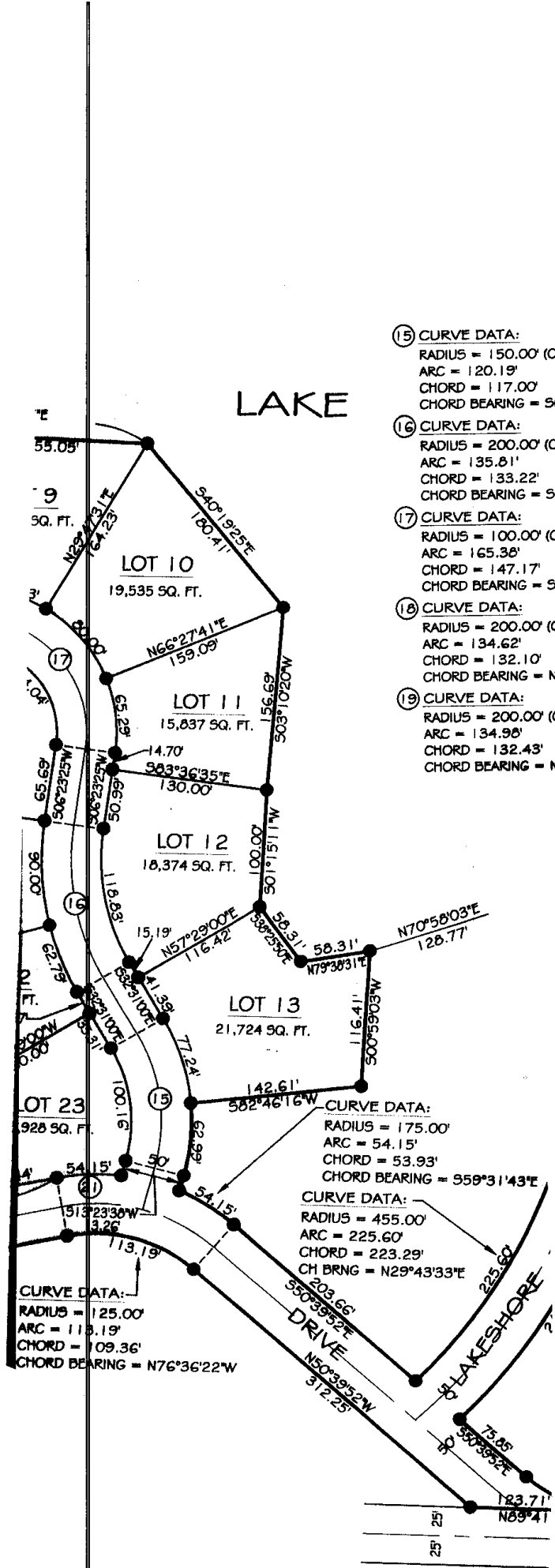




CURVE DATA:
 RADIUS = 355.00'
 ARC = 238.96'
 CHORD = 234.47'
 CHORD BEARING = N72°21'04"E

LAKE





LAKE

- ⑮ CURVE DATA:
RADIUS = 150.00' (CENTERLINE)
ARC = 120.19'
CHORD = 117.00'
CHORD BEARING = S09°33'41"E
- ⑯ CURVE DATA:
RADIUS = 200.00' (CENTERLINE)
ARC = 135.81'
CHORD = 133.22'
CHORD BEARING = S13°03'47"E
- ⑰ CURVE DATA:
RADIUS = 100.00' (CENTERLINE)
ARC = 165.38'
CHORD = 147.17'
CHORD BEARING = S40°59'16"E
- ⑱ CURVE DATA:
RADIUS = 200.00' (CENTERLINE)
ARC = 134.62'
CHORD = 132.10'
CHORD BEARING = N72°21'04"E
- ⑲ CURVE DATA:
RADIUS = 200.00' (CENTERLINE)
ARC = 134.98'
CHORD = 132.43'
CHORD BEARING = N33°43'59"E

- ⑳ CURVE DATA:
RADIUS = 200.00' (CENTERLINE)
ARC = 71.28'
CHORD = 70.90'
CHORD BEARING = N24°36'28"E
- ㉑ CURVE DATA:
RADIUS = 175.00' (CENTERLINE)
ARC = 54.15'
CHORD = 53.93'
CHORD BEARING = S86°18'59"W
- ㉒ CURVE DATA:
RADIUS = 200.00' (CENTERLINE)
ARC = 181.44'
CHORD = 175.28'
CHORD BEARING = S51°27'46"W
- ㉓ CURVE DATA:
RADIUS = 100.00' (CENTERLINE)
ARC = 89.10'
CHORD = 86.18'
CHORD BEARING = N50°59'53"E
- ㉔ CURVE DATA:
RADIUS = 110.00' (CENTERLINE)
ARC = 145.89'
CHORD = 135.43'
CHORD BEARING = N38°31'39"E

CURVE DATA:
RADIUS = 125.00'
ARC = 113.19'
CHORD = 109.36'
CHORD BEARING = N76°36'22"W

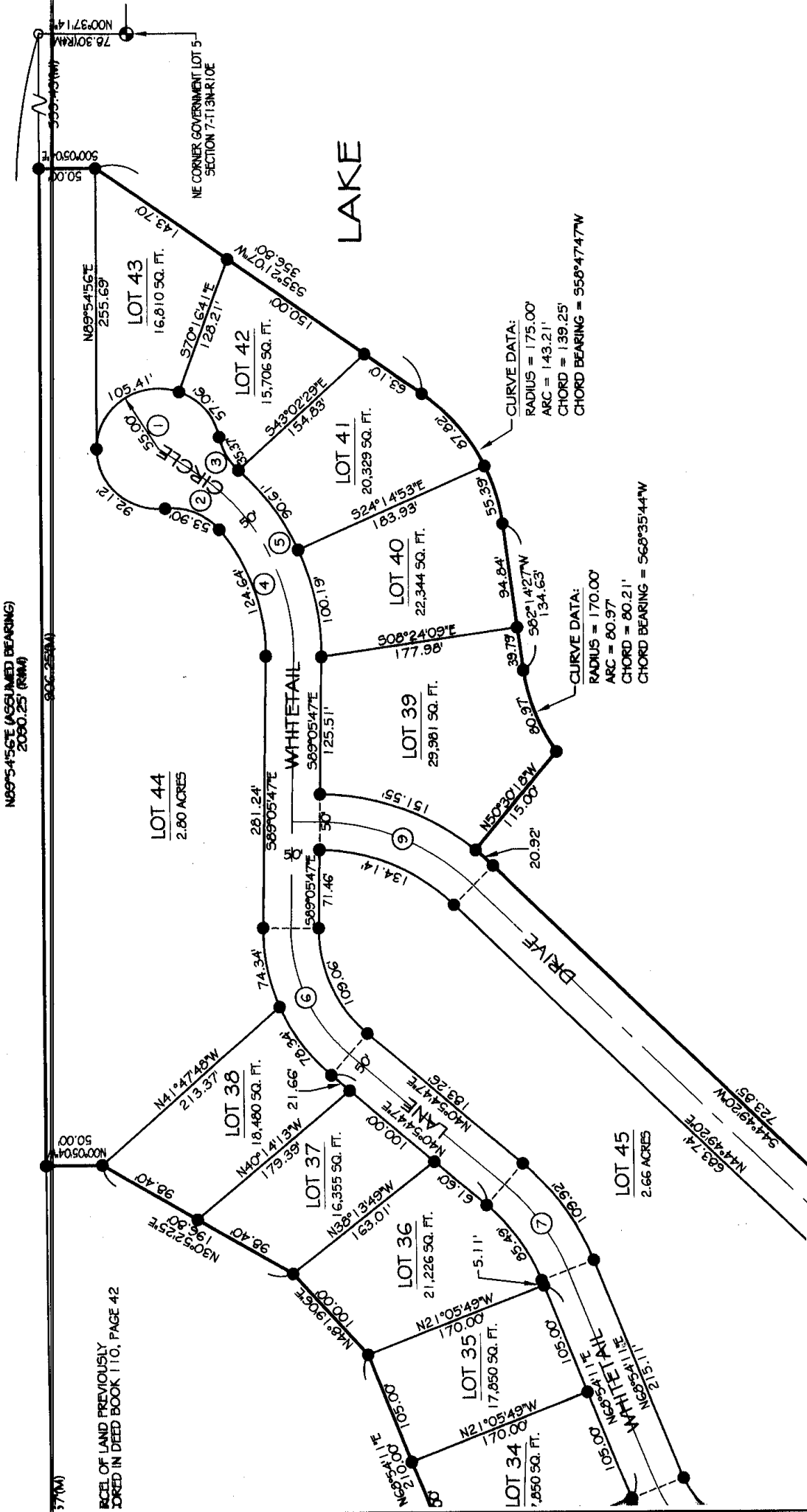
CURVE DATA:
RADIUS = 175.00'
ARC = 54.15'
CHORD = 53.93'
CHORD BEARING = S59°31'43"E

CURVE DATA:
RADIUS = 455.00'
ARC = 225.60'
CHORD = 223.29'
CH BRNG = N29°43'33"E

DRIVE
203.66'
S50°39'52"E
N50°39'52"W
372.25'

LAKE SHORE
225.60'

73.85'
S50°39'52"E
183.71'
N89°41'



N89°54'56"E (ASSUMED BEARING)
2080.25' (R/W)

37(W)
PIECE OF LAND PREVIOUSLY
CORDED IN DEED BOOK 110, PAGE 42

LOT 44
2.80 ACRES

LOT 38
18,480 SQ. FT.

LOT 37
16,355 SQ. FT.

LOT 36
21,226 SQ. FT.

LOT 35
17,850 SQ. FT.

LOT 34
17,850 SQ. FT.

LOT 41
20,329 SQ. FT.

LOT 39
29,981 SQ. FT.

LOT 40
22,344 SQ. FT.

LOT 42
15,706 SQ. FT.

LOT 43
16,810 SQ. FT.

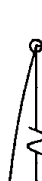
LOT 45
2.66 ACRES

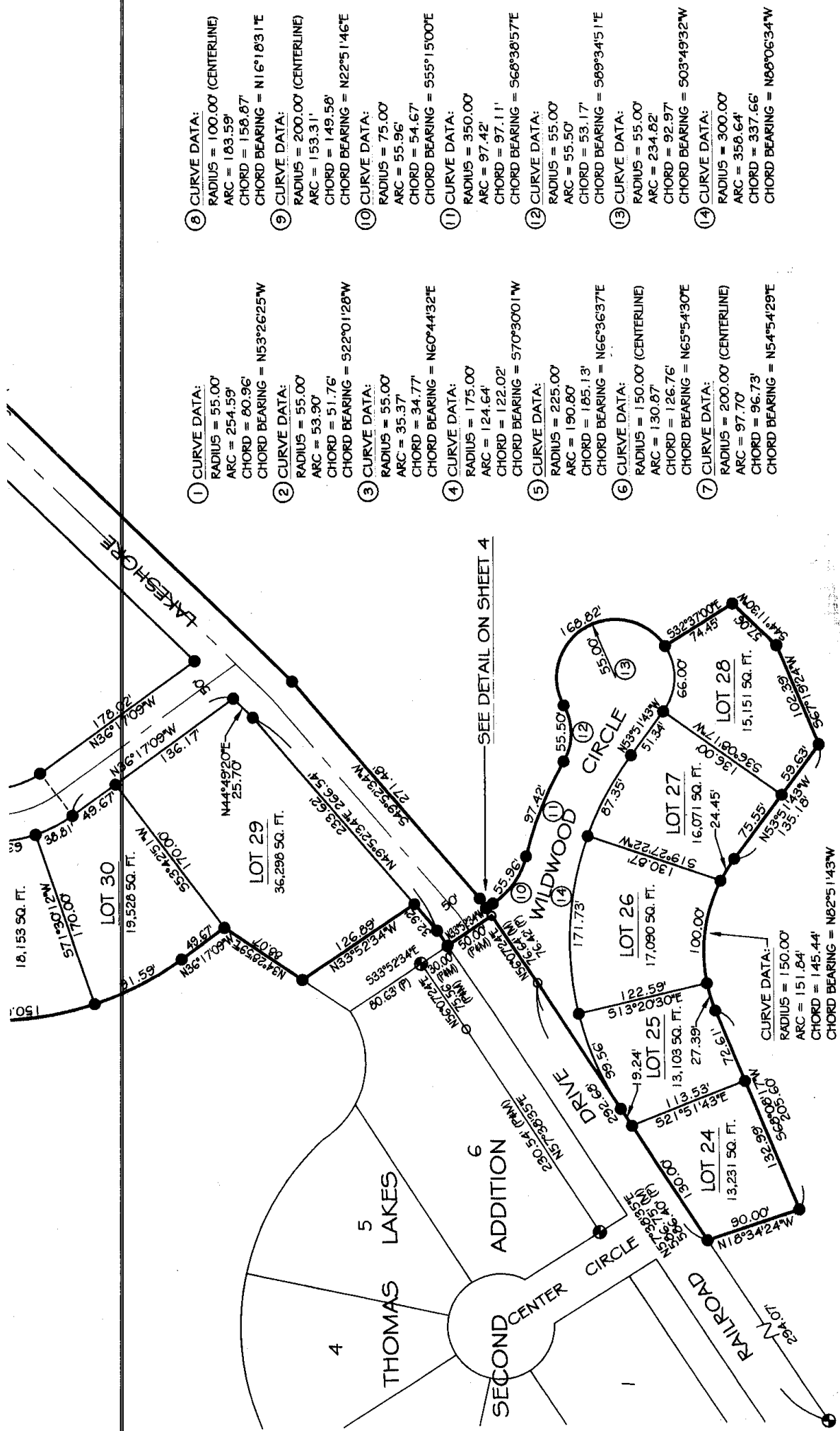
LAKE

CURVE DATA:
RADIUS = 175.00'
ARC = 143.21'
CHORD = 139.25'
CHORD BEARING = S58°47'47"W

CURVE DATA:
RADIUS = 170.00'
ARC = 80.97'
CHORD = 80.21'
CHORD BEARING = S68°35'44"W

NE CORNER GOVERNMENT LOT 5
SECTION 7-11-3N-410E



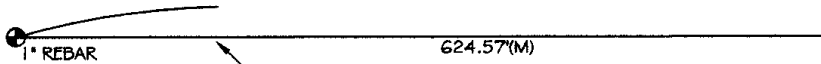


- ① CURVE DATA:
RADIUS = 55.00'
ARC = 254.59'
CHORD = 80.96'
CHORD BEARING = N53°26'25"W
- ② CURVE DATA:
RADIUS = 55.00'
ARC = 53.90'
CHORD = 51.76'
CHORD BEARING = S22°01'28"W
- ③ CURVE DATA:
RADIUS = 55.00'
ARC = 35.37'
CHORD = 34.77'
CHORD BEARING = N60°44'32"E
- ④ CURVE DATA:
RADIUS = 175.00'
ARC = 124.64'
CHORD = 122.02'
CHORD BEARING = S70°30'01"W
- ⑤ CURVE DATA:
RADIUS = 225.00'
ARC = 190.80'
CHORD = 165.13'
CHORD BEARING = N66°36'37"E
- ⑥ CURVE DATA:
RADIUS = 150.00' (CENTERLINE)
ARC = 130.87'
CHORD = 126.76'
CHORD BEARING = N65°54'30"E
- ⑦ CURVE DATA:
RADIUS = 200.00' (CENTERLINE)
ARC = 97.70'
CHORD = 96.73'
CHORD BEARING = N54°54'29"E
- ⑧ CURVE DATA:
RADIUS = 100.00' (CENTERLINE)
ARC = 183.59'
CHORD = 158.87'
CHORD BEARING = N16°18'31"E
- ⑨ CURVE DATA:
RADIUS = 200.00' (CENTERLINE)
ARC = 153.31'
CHORD = 149.58'
CHORD BEARING = N22°51'46"E
- ⑩ CURVE DATA:
RADIUS = 75.00'
ARC = 55.96'
CHORD = 54.67'
CHORD BEARING = 555°15'00"E
- ⑪ CURVE DATA:
RADIUS = 350.00'
ARC = 97.42'
CHORD = 97.11'
CHORD BEARING = 568°38'57"E
- ⑫ CURVE DATA:
RADIUS = 55.00'
ARC = 55.50'
CHORD = 53.17'
CHORD BEARING = 569°34'51"E
- ⑬ CURVE DATA:
RADIUS = 55.00'
ARC = 234.82'
CHORD = 92.97'
CHORD BEARING = 503°49'32"W
- ⑭ CURVE DATA:
RADIUS = 300.00'
ARC = 358.64'
CHORD = 337.66'
CHORD BEARING = N88°06'34"W

SEE DETAIL ON SHEET 4

CURVE DATA:
RADIUS = 150.00'
ARC = 151.84'
CHORD = 145.44'
CHORD BEARING = N82°51'43"W

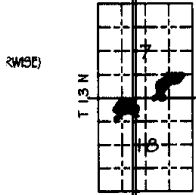
T5



SOUTH LINE OF A PARCEL OF LAND PREVIOUSLY DESCRIBED AND RECORDED IN DEED BOOK 110, PAGE 42

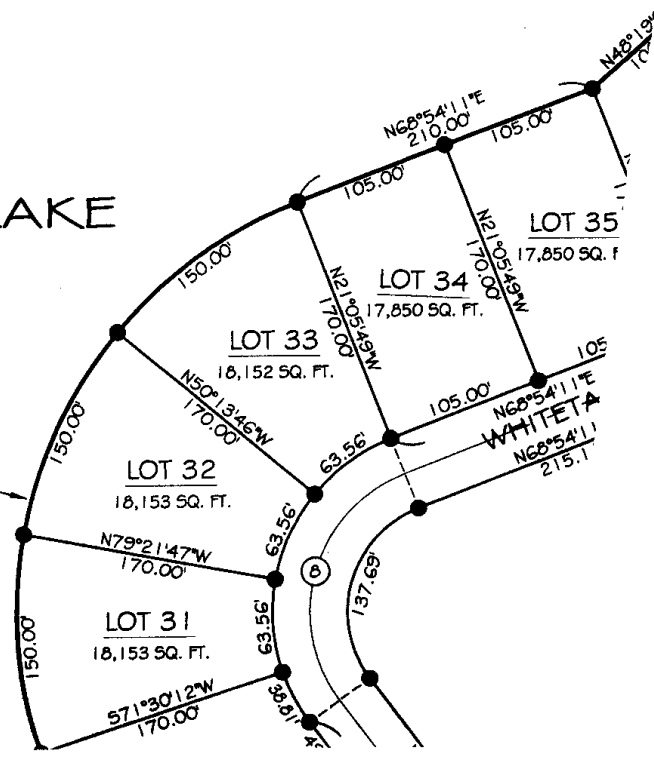
SCALE: 1" = 100'

SAUNDERS COUNTY NEBRASKA



LAKE

CURVE DATA
 RADIUS = 295.00'
 ARC = 54.159°
 CHORD = 468.67'
 CHORD BEARING = N16°18'31"E



BUILDING SETBACK REQUIREMENTS

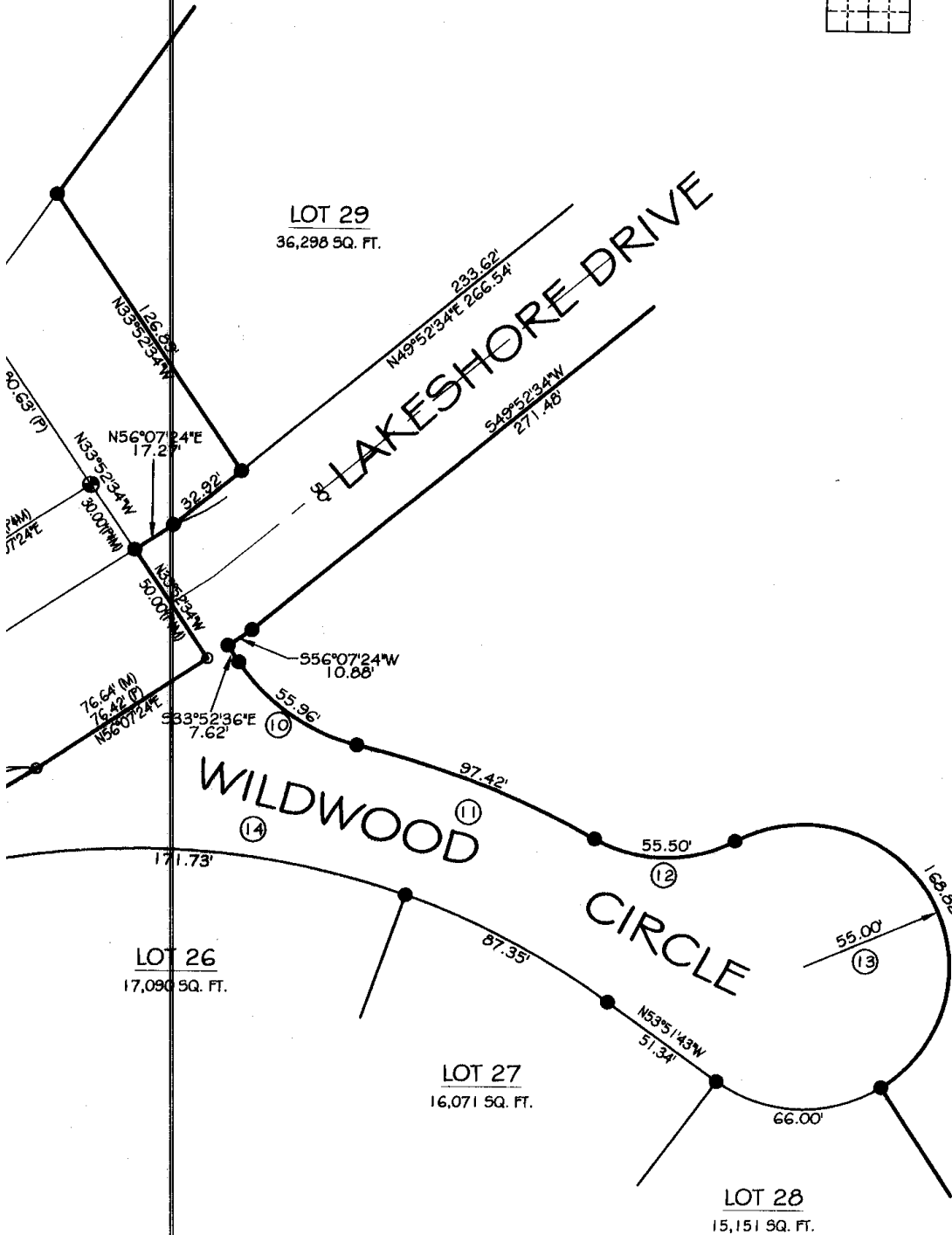
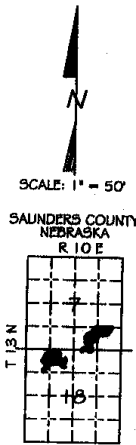
(RESIDENTIAL LAKESHORE)
 20' FRONTYARD
 10' SIDERYARD
 25' LAKESHORE YARD

UTILITY EASEMENTS

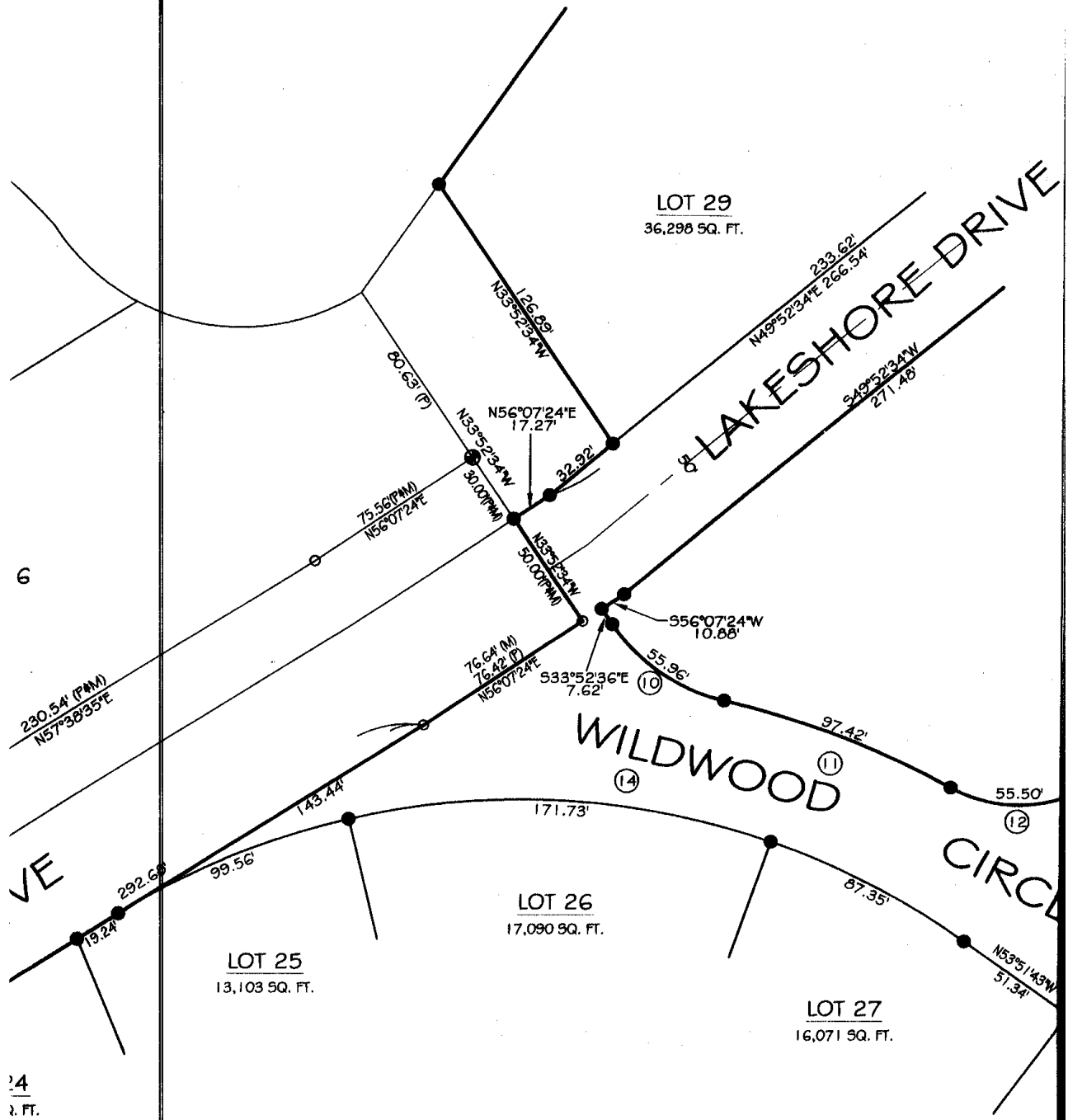
10' FRONTYARD
 10' SIDERYARD

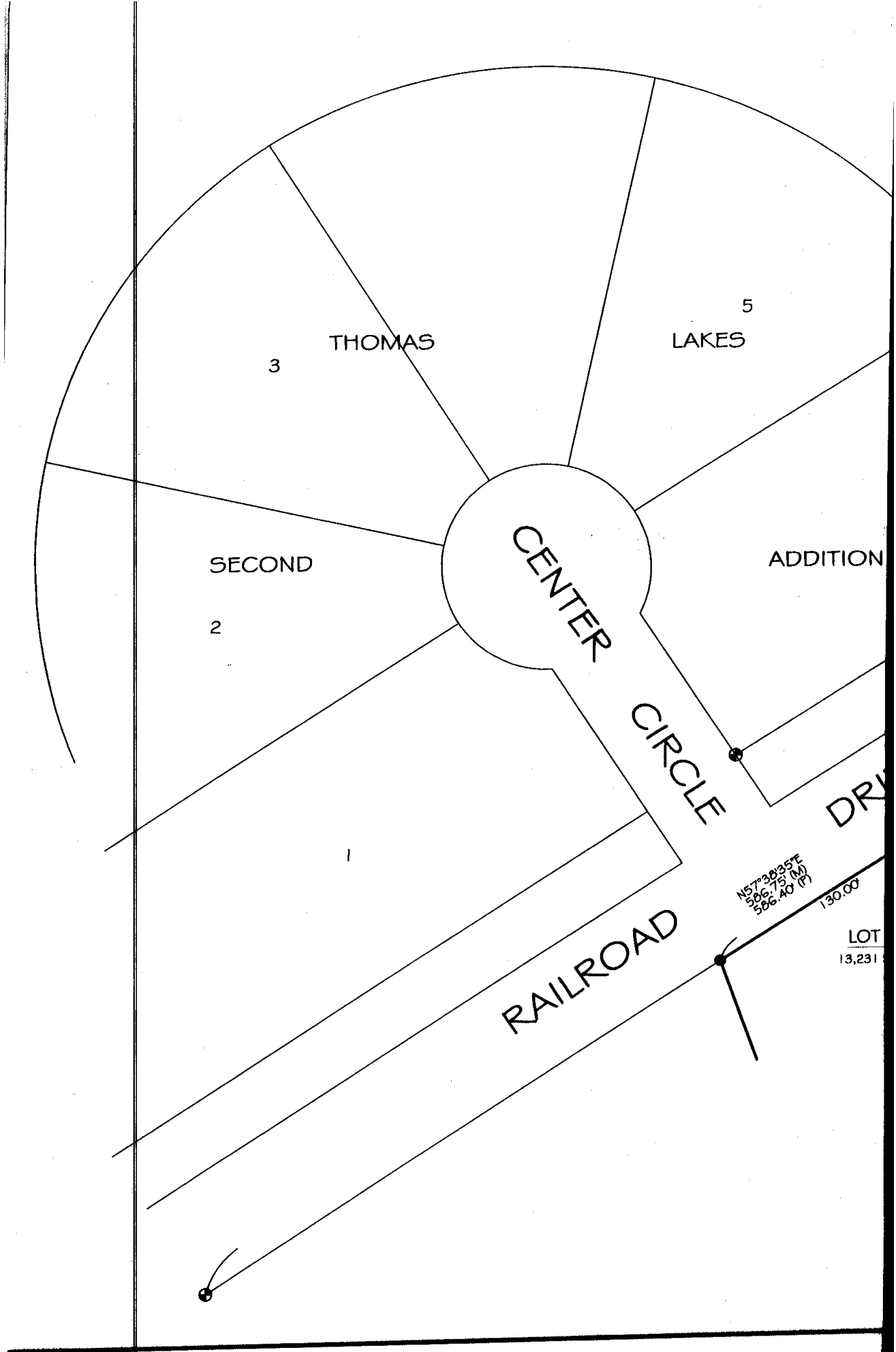
LEGEND

- ⊕ MONUMENT FOUND (5/8" REBAR, UNLESS NOTED OTHERWISE)
- MONUMENT SET (5/8" BY 24" REBAR)
- (M) MEASURED DISTANCE
- (R) RECORDED DISTANCE
- (P) PLATTED DISTANCE



- MONUMENT FOUND
(3/4" REBAR, UNLESS NOTED)
- MONUMENT SET
(5/8" BY 24" REBAR)
- (M) MEASURED DISTANCE
- (R) RECORDED DISTANCE
- (F) PLATTED DISTANCE





3 THOMAS

5 LAKES

2 SECOND

CENTER CIRCLE

ADDITION

CIRCLE

DRIVE

RAILROAD

N57°38'35\"/>
506.75 (M)
506.40 (F)

130.00

LOT
13,231