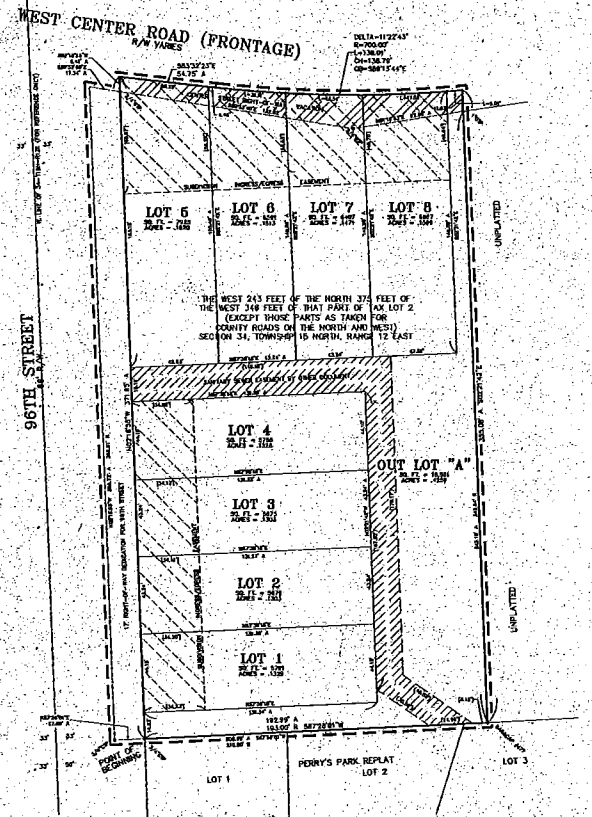
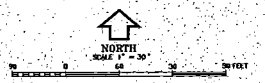


Final Plat EGA141091
261307410



FINAL PLAT

THE COTTAGES AT OAKDALE ADDITION

A CLUSTER SUBDIVISION

CONTAINING LOTS 1 THROUGH 8 INCLUSIVE AND OUT LOT "A", BRING A PLATTING OF THE WEST 243 FEET OF THE NORTH 375 FEET OF THE WEST 340 FEET OF THAT PART OF TAX LOT 2 (EXCEPT THOSE PARTS AS TAKEN FOR COUNTY ROADS ON THE NORTH AND WEST) AND A PORTION OF WEST CENTER ROAD RIGHT-OF-WAY, ALL LYING IN THE NORTHWEST QUARTER OF THE NORTHWEST QUARTER OF SECTION 34, TOWNSHIP 15 NORTH, RANGE 12 EAST OF THE 6TH P.M., DOUGLAS COUNTY, NEBRASKA

REVISIONS	NO.	DESCRIPTION	DATE	BY

DEDICATION
KNOW ALL MEN THESE PRESENTS, THAT WE, ESSEX CORPORATION, OWNERS OF THE LAND EMBRAZED WITHIN THIS PLAT AND DESCRIBED IN THE SURVEYOR'S CERTIFICATE, HAVE CAUSED THE SAME TO BE SURVEYED INTO LOTS, SAID SURVEYING TO BE DONE AS SET FORTH IN THE FOREGOING.

ACKNOWLEDGMENT BY CORPORATION
STATE OF NEBRASKA
COUNTY OF DOUGLAS
I, Don B. Brunson, Mayor of the City of Omaha, Nebraska, do hereby certify that the foregoing plat has been duly recorded in the public records of this county and that the same is a true and correct copy of the original filed in my office.

ACKNOWLEDGMENT BY CORPORATION
STATE OF NEBRASKA
COUNTY OF DOUGLAS
ON THE 19th DAY OF July, 2015, before me a Notary Public in and for said county, personally appeared Don B. Brunson, Mayor of the City of Omaha, Nebraska, who is personally known to me, and who acknowledged to me that he is the duly elected Mayor of the City of Omaha, Nebraska, and that he is the duly authorized officer of said corporation, and he acknowledged the execution hereof to be his voluntary act and deed.

COUNTY TREASURER'S CERTIFICATE
I, Mike W., County Treasurer of Douglas County, Nebraska, do hereby certify that this plat has been duly recorded in the public records of this county and that the same is a true and correct copy of the original filed in my office.

REVIEW BY DOUGLAS COUNTY ENGINEER
I, Michael J. Anderson, Douglas County Engineer, do hereby certify that this plat has been duly recorded in the public records of this county and that the same is a true and correct copy of the original filed in my office.

APPROVAL OF THE CITY PLANNING BOARD
This plat of the Cottages at Oakdale Addition was approved by the City Planning Board of Omaha, Nebraska, on the 24th day of July, 2015 A.D.

APPROVAL OF CITY ENGINEER OF OMAHA
I hereby approve this plat of the Cottages at Oakdale Addition as to the technical requirements as to the record drawing.

SURVEYOR'S CERTIFICATE
I, William A. White, Jr., a Registered Land Surveyor in the State of Nebraska, do hereby certify that a detailed survey of the above described plat was made and that the same is a true and correct copy of the original filed in my office.

OMAHA CITY COUNCIL ACCEPTANCE
This plat of the Cottages at Oakdale Addition was approved and accepted by the City Council of Omaha, Nebraska, on the 24th day of July, 2015 A.D.

APPROVAL OF CITY ENGINEER OF OMAHA
I hereby approve this plat of the Cottages at Oakdale Addition as to the technical requirements as to the record drawing.

EHRHART GRIFFIN & ASSOCIATES

3552 Fenelon Street
Omaha, Nebraska 68131
402 / 531-0631

- ENGINEERING
- PLANNING
- LAND SURVEYING

THE COTTAGES AT OAKDALE ADDITION
A CLUSTER SUBDIVISION
FINAL PLAT
S. E. CORNER OF S. 96TH & W. CENTER ROAD
OMAHA, NEBRASKA

DATE: 5/14/2015
DESIGNED BY:
DRAWN BY:
CHECKED BY:
CREW:



SHEET NO. 1 OF 1