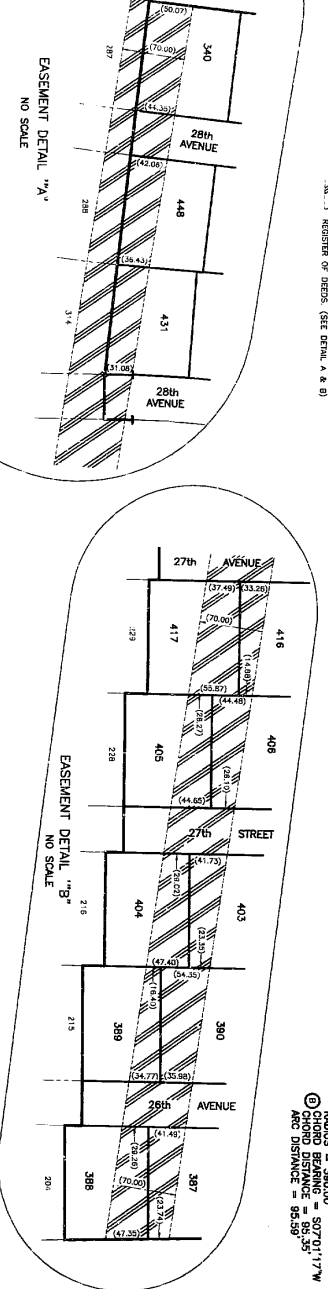
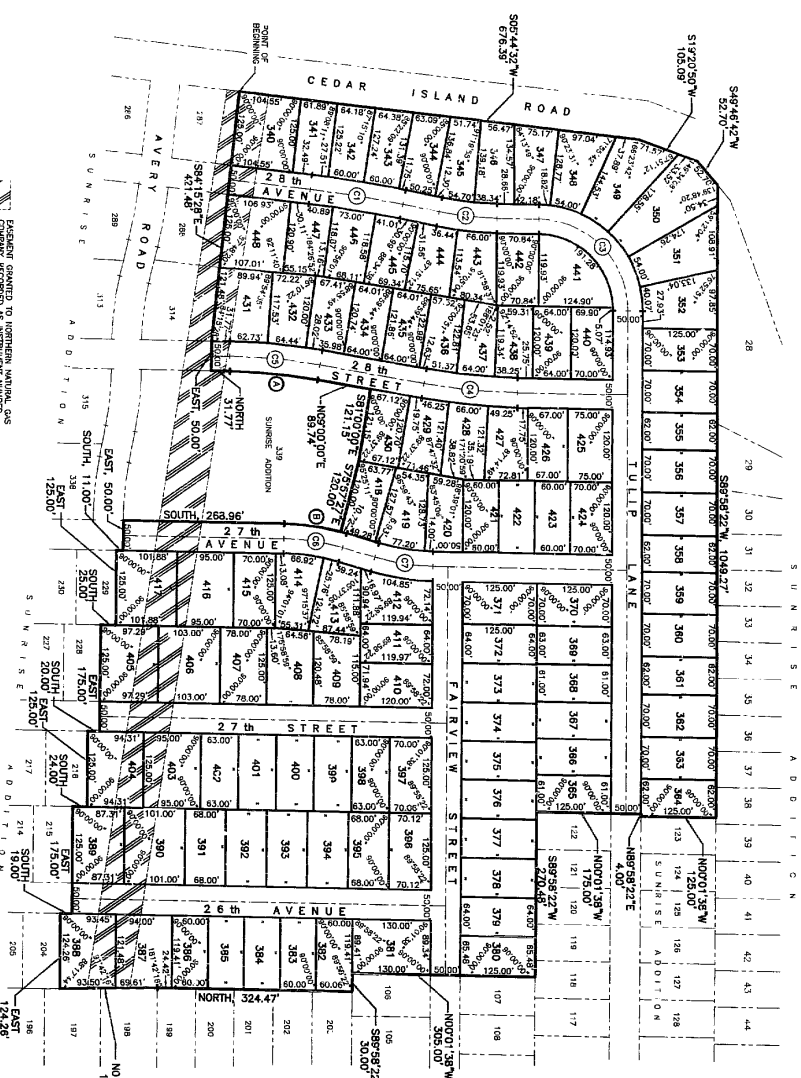


SUNRISE ADDITION

SECTION 21, T14N, R12E OF THE 6th P.M. S&P COUNTY, NEBRASKA
 BEING A PLATING OF PART OF THE SE 1/4, 0-3
 LOTS 340 THRU 441, INCLUSIVE

CURVE	BEARS	TANGENT	ARC LENGTH	CHORD	RADIUS
C1	507.00'	78.59'	157.08'	180.00'	180.00'
C2	104.61'	49.01'	97.74'	50.00'	50.00'
C3	90.00'	18.00'	23.56'	15.00'	15.00'
C4	90.00'	18.00'	23.56'	15.00'	15.00'
C5	90.00'	18.00'	23.56'	15.00'	15.00'
C6	157.08'	50.06'	99.49'	35.00'	35.00'
C7	738.43'	48.37'	98.07'	358.95'	358.95'



NOTES:
 1. DISTANCES SHOWN ON CURVES ARE TO BE TAKEN AS INDICATED.
 2. CURVES ARE IN NECESSITY PERMANENT TO EXISTENTS.
 3. THERE SHALL BE NO DIRECT MEASUREMENTS TO ANY POINT ON ANY CURVE UNLESS SPECIFICALLY NOTED OTHERWISE.
 4. ALL DISTANCES ARE TO BE TAKEN AS INDICATED.
 5. ALL BEARINGS ARE TO BE TAKEN AS INDICATED.
 6. ALL DISTANCES ARE TO BE TAKEN AS INDICATED.
 7. ALL BEARINGS ARE TO BE TAKEN AS INDICATED.
 8. ALL DISTANCES ARE TO BE TAKEN AS INDICATED.
 9. ALL BEARINGS ARE TO BE TAKEN AS INDICATED.
 10. ALL DISTANCES ARE TO BE TAKEN AS INDICATED.

Counters
 Verified
 D.E.
 Fees \$9.50
 Cash Chg

APPROVAL OF BELLEVUE CITY COUNCIL
 REVIEW BY S&P COUNTY SURVEYOR
 REVIEW BY S&P COUNTY SURVEYOR
 REVIEW BY S&P COUNTY SURVEYOR

APPROVAL OF BELLEVUE CITY COUNCIL
 REVIEW BY S&P COUNTY SURVEYOR
 REVIEW BY S&P COUNTY SURVEYOR
 REVIEW BY S&P COUNTY SURVEYOR

APPROVAL OF BELLEVUE CITY COUNCIL
 REVIEW BY S&P COUNTY SURVEYOR
 REVIEW BY S&P COUNTY SURVEYOR
 REVIEW BY S&P COUNTY SURVEYOR

APPROVAL OF BELLEVUE CITY COUNCIL
 REVIEW BY S&P COUNTY SURVEYOR
 REVIEW BY S&P COUNTY SURVEYOR
 REVIEW BY S&P COUNTY SURVEYOR

2003-10845

THOMPSON, DRESSEN & DORNER, INC.
 Consulting Engineers & Land Surveyors
 1086 OLD MILL ROAD
 OMAHA, NE 68154
 (402) 330-8890

SUNRISE ADDITION
 FINAL PLAT
 AS SHOWN
 AUG. 30, 2002
 RJR
 DHN