

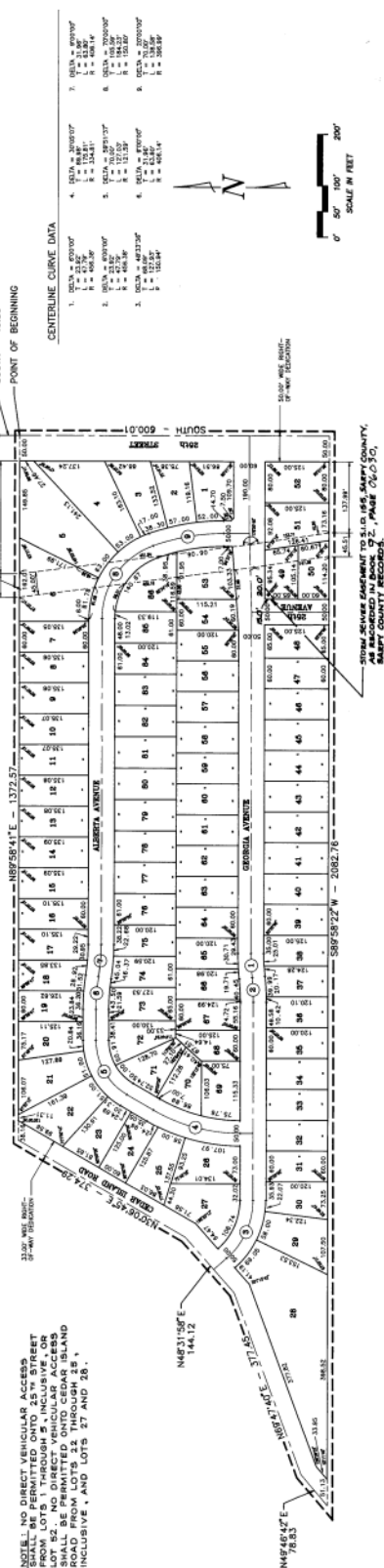
92-06029

SUNRISE ADDITION

LOTS 1 THRU 86, INCLUSIVE
BEING A PLATING OF TAX LOT 18 IN THE SE 1/4
OF SECTION 21, T14N, R13E OF THE 6TH P.M., SAPPY
COUNTY, NEBRASKA

92-06029
5833
284 Egan

NOTE: NO DIRECT VEHICULAR ACCESS
SHALL BE PERMITTED ONTO 25TH STREET
FROM LOTS 1 THROUGH 5, INCLUSIVE, OR
SHALL BE PERMITTED ONTO CEDAR ISLAND
ROAD FROM LOTS 35 THROUGH 38,
INCLUSIVE, AND LOTS 57 AND 58.



STATE OF NEBRASKA
COUNTY OF SAPPY
I, **William L. Dorn**,
PLATING ENGINEER, do hereby certify that the foregoing plat of the subdivision herein and the plat of the subdivision herein are correct and true to the original survey and that the same have been approved by the Board of Commissioners of Sappy County, Nebraska, and that the same have been recorded in the office of the County Clerk of Sappy County, Nebraska, on this 14th day of December, 1925.

WILLIAM L. DORN
PLATING ENGINEER

APPROVAL OF BELLEVILLE CITY PLANNING COMMISSION
THIS PLAT OF LOTS 1 THRU 86, INCLUSIVE, BEING A PLATING OF TAX LOT 18 IN THE SE 1/4 OF SECTION 21, T14N, R13E OF THE 6TH P.M., SAPPY COUNTY, NEBRASKA, HAS BEEN APPROVED BY THE BELLEVILLE CITY PLANNING COMMISSION ON THIS 14th DAY OF DECEMBER, 1925.

APPROVAL OF BELLEVILLE CITY COUNCIL
THIS PLAT OF LOTS 1 THRU 86, INCLUSIVE, BEING A PLATING OF TAX LOT 18 IN THE SE 1/4 OF SECTION 21, T14N, R13E OF THE 6TH P.M., SAPPY COUNTY, NEBRASKA, HAS BEEN APPROVED BY THE BELLEVILLE CITY COUNCIL ON THIS 14th DAY OF DECEMBER, 1925.

RECORDED BY THE COUNTY CLERK OF SAPPY COUNTY, NEBRASKA, ON THIS 14th DAY OF DECEMBER, 1925.

WILLIAM L. DORN
PLATING ENGINEER

116029

SUNRISE ADDITION

2 THOMPSON, DRESSSEN & DORNER
Consulting Engineers & Land Surveyors
10836 OLD MILL ROAD
OMAHA, NE 68154
(402) 330 - 8860



880-101

FINAL PLAT