

TEKAMAH, NEBR.

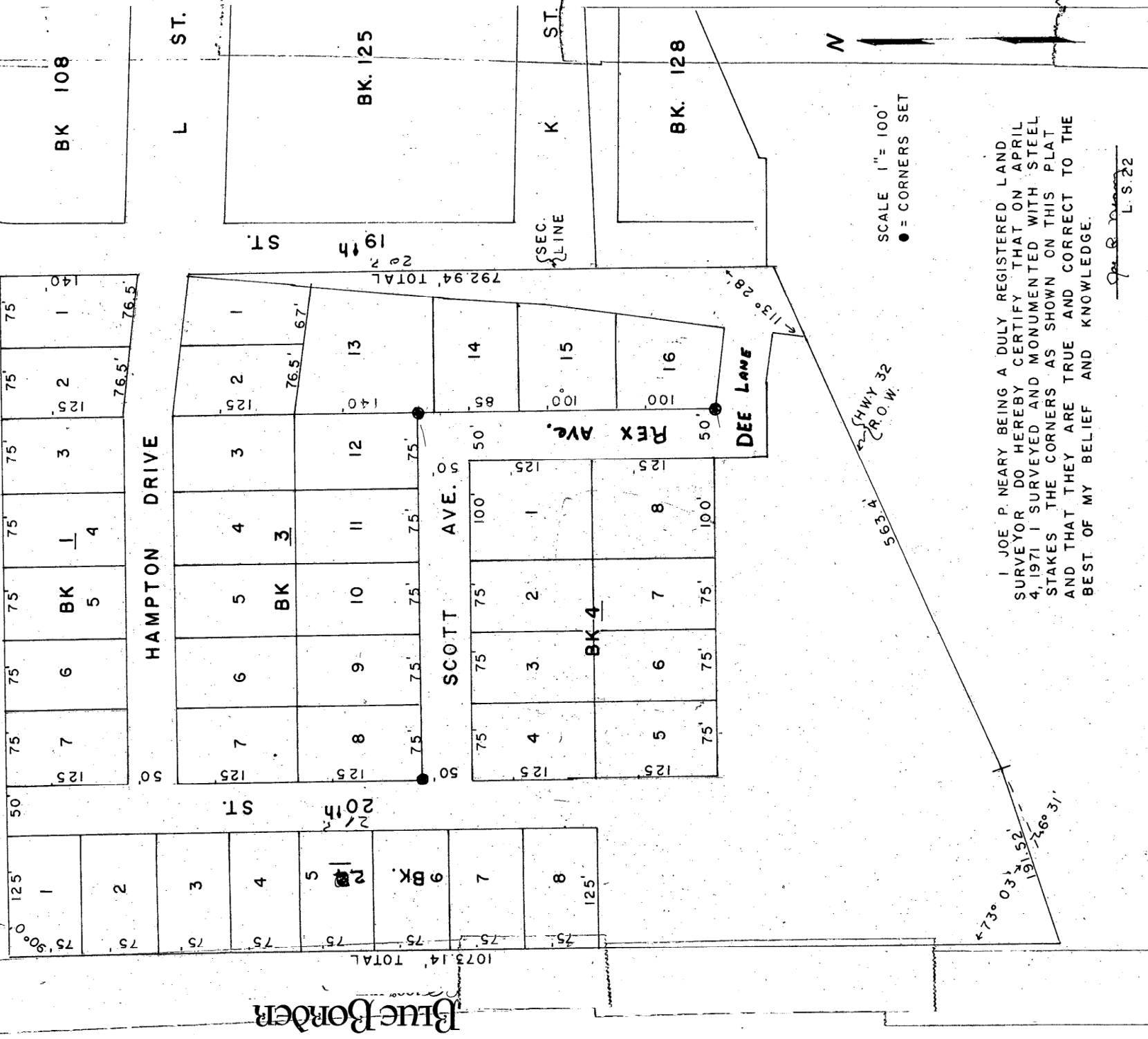
(Recorded Book 23 Misc, Page 513
(A. DALE FRENCH, COUNTY CLERK

BURT COUNTY, NEBRASKA
FILED
1971 APR 20 AM 9:18
A. DALE FRENCH
COUNTY CLERK



1/4 COR.

Recorded 4/20/71 at 9:18 a.m. in Book 23 Page 513, Burt County, Nebraska



SCALE 1" = 100'
● = CORNERS SET

I JOE P. NEARY BEING A DULY REGISTERED LAND SURVEYOR DO HEREBY CERTIFY THAT ON APRIL 4, 1971 I SURVEYED AND MONUMENTED WITH STEEL STAKES THE CORNERS AS SHOWN ON THIS PLAT AND THAT THEY ARE TRUE AND CORRECT TO THE BEST OF MY BELIEF AND KNOWLEDGE.

Joe P. Neary
L.S. 22

Blue Border