

2000-34068 SUMMERFIELD 2ND ADDITION REPLAT TWO

LOTS 1 AND 2

REPLAT OF ALL OF LOTS 4, 5 AND 6 AND THE INCLUDED STREET FRONT-5% OF EACH, WITH THE SUMMERFIELD 2ND ADDITION REPLAT, A SUBDIVISION LOCATED IN THE SE 1/4 OF SECTION 23, TOWNSHIP 14 NORTH, RANGE 12 EAST OF THE 9TH P.M., SAPPY COUNTY, NEBRASKA.

SURVEYOR'S CERTIFICATE

I hereby certify that I have made a ground survey of the subdivision described herein and that corrected measurements and distances have been taken on the boundary of the within plat and of all lots, streets, angle points and ends of all corners in Summerfield 2nd Addition Replat Two. The lots, streets, boundaries and bearings shown, being a replat of all of Lots 4 and 5 and the included street right-of-way of Eym Moore Drive, Summerfield 2nd Addition Replat 1, a subdivision located in the SE 1/4 of Section 23, Township 14 North, Range 12 East of the 9th P.M., Sappy County, Nebraska, being more particularly described as follows:

Beginning at the Northwest corner of said Lot 5, Summerfield 2nd Addition Replat 1, said point also being on the West right-of-way line of 72nd Street; thence South 89°54'18" East, a distance of 219.32 feet, to the South East corner of said Lot 5, Summerfield 2nd Addition Replat 1, a distance of 420.33 feet; thence South 00°05'42" East, a distance of 180.00 feet, to the East End of said Lot 5, Summerfield 2nd Addition Replat 1; thence South 89°54'18" West, a distance of 219.32 feet, to the South East corner of said Lot 4, Summerfield 2nd Addition Replat 1, a distance of 256.59 feet; thence North 00°05'42" West, a distance of 316.29 feet, to the Northwest corner of said Lot 4, Summerfield 2nd Addition Replat 1; thence North 00°05'42" West, a distance of 316.29 feet, to the Northwest corner of said Lot 5, Summerfield 2nd Addition Replat 1; thence North 89°54'18" East, a distance of 219.32 feet, to the point of beginning.

Said tract hereby contains an area of 2.168 acres, more or less.

Robert Clark
Robert Clark, LS-119
Date: 5-26-00



PETITION TO VACATE A PART OF SUMMERFIELD 2ND ADDITION REPLAT TWO

A part of Summerfield 2nd Addition Replat 1, a subdivision as surveyed, plotted and recorded in Sappy County, Nebraska, as the same is shown on the attached plat of the same, is hereby petitioned to be vacated, and the dedication of the same for public use be set aside, vacated, and had for naught, and to replat said tract as Summerfield 2nd Addition Replat Two, Lots 1 and 2 and in connection therewith make the following dedication:

DEDICATION

Know all men by these presents that I, Charles G. Smith, owner of the property described in the Certification of Survey and enclosed within this plat have caused said land to be subdivided into lots to be numbered as shown, said subdivision to hereafter be known as SUMMERFIELD 2ND ADDITION REPLAT TWO (Lots to be numbered as shown), and I do hereby ratify and approve of the disposition of my property as shown on the plat, and I do hereby grant easements as shown on this plat, I do hereby grant a perpetual easement to the Omaha Public Power District, U.S. West Communications, and any other utility company for the purpose of installing, maintaining, operating, repairing, and replacing overhead power lines, poles, towers, cross-arms, cables, conduits and other related facilities, and to extend thereon wires or cables for the conveying and transmission of electric current for light, heat, and power and for the transmission of signals and sounds of all kinds including signals provided by a cable television system, and the reception on, over, through, under and across a five-foot (5') wide strip of land abutting all front and side boundary lot lines; and I hereby grant to the Omaha Public Power District, U.S. West Communications, and any other utility company a perpetual easement for the installation, operation and maintenance of overhead power lines and other related facilities, and to extend thereon poles for the transmission of gas and water, on, through, under and across a five-foot (5') wide strip of land abutting all front and side boundary lot lines; and I do hereby grant a perpetual easement for the installation, operation and maintenance of overhead power lines and other related facilities, and to extend thereon poles for the transmission of gas and water, on, through, under and across a five-foot (5') wide strip of land abutting all front and side boundary lot lines; but the permanent buildings or retaining walls shall be placed in the said easement ways, but the same may be used for gardens, shrubs, landscaping and other purposes that do not interfere with the intended use of rights herein granted.

Charles G. Smith
Charles G. Smith

ACKNOWLEDGMENT OF NOTICE

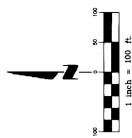
STATE OF NEBRASKA)
COUNTY OF SAPPY)

On this 31st day of MAY, 2000 before me, the undersigned, a Notary Public in and for said County, personally came Charles G. Smith, to me personally known, to be the identical person whose name is affixed to the petition on this plat and acknowledged the same to be his voluntary act and deed.

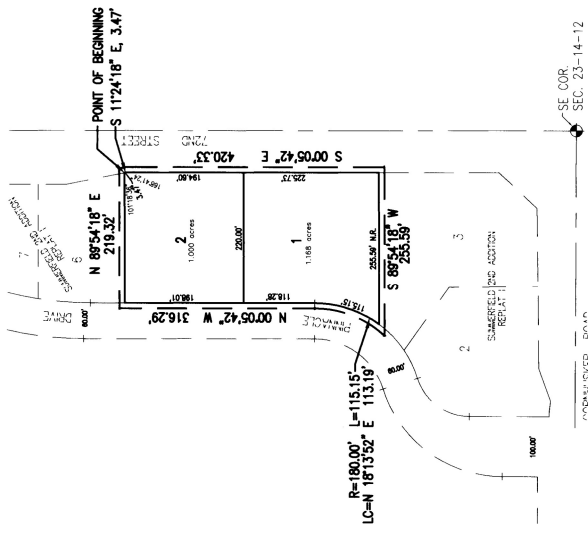
Witness my hand and Notarial Seal the day and year last above written.

Homer R. Hunt
Homer R. Hunt
Notary Public

Filed For Record 5-26-2000 at 11:28AM
Instrument # 2000-34068
Lloyd J. Lundberg, Register of Deeds, Sappy Co., NE



- ### NOTES
- ALL ANGLES ARE 90° UNLESS OTHERWISE NOTED
 - ALL LOT LINES ARE RADIAL TO CURVED STREETS UNLESS SHOWN AS (N.R.)
 - DIRECT VEHICULAR ACCESS WILL NOT BE ALLOWED TO 72ND STREET FROM ANY LOT ABUTTING SAID STREET.



APPROVAL BY MAPION CITY COUNCIL

The subdivision of SUMMERFIELD 2ND ADDITION REPLAT TWO was approved by the City Council of the City of Papillion, Nebraska, on the 11th day of JUNE, 2000.

Attest: *Cheryl A. Bennett*
Mayor

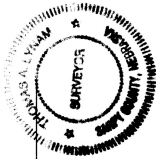
APPROVAL OF MAPION PLANNING COMMISSION

The subdivision of SUMMERFIELD 2ND ADDITION REPLAT TWO was approved by the Papillion Planning Commission on this 11th day of JUNE, 2000.

Angie Jones
Chairman, Papillion Planning Commission

REGISTER OF SAPPY COUNTY SURVEYOR

This plat of SUMMERFIELD 2ND ADDITION REPLAT TWO was reviewed by the office of the Sappy County Surveyor on this 11th day of JUNE, 2000.



APPROVAL OF PAPILLION MUNICIPAL ENGINEER

The subdivision of SUMMERFIELD 2ND ADDITION REPLAT TWO was approved by the Papillion City Engineer on this 11th day of JUNE, 2000.

Robert Clark
Robert Clark, LS-119
Professional Surveyor

Ray Wilby
County Treasurer

COUNTY TREASURER'S CERTIFICATE

This is to certify that I find no regular or special taxes due or delinquent against the property described in the Surveyor's Certificate and endorsed in this plat as shown by the records of this office.

DATE: 8-25-00

