

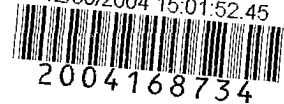


DEED 2004168734



DEC 30 2004 15:01 P 17

Received - RICHARD TAKECHI  
Register of Deeds, Douglas County, NE  
12/30/2004 15:01:52.45



2004168734

**THIS PAGE INCLUDED FOR INDEXING  
PAGE DOWN FOR BALANCE OF INSTRUMENT**

Deed 9

FEE 405.50 FB New-MC-37138  
old 01-60000

12/17  
641 BKP 3-15-11 C/O COMP LW

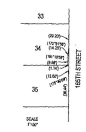
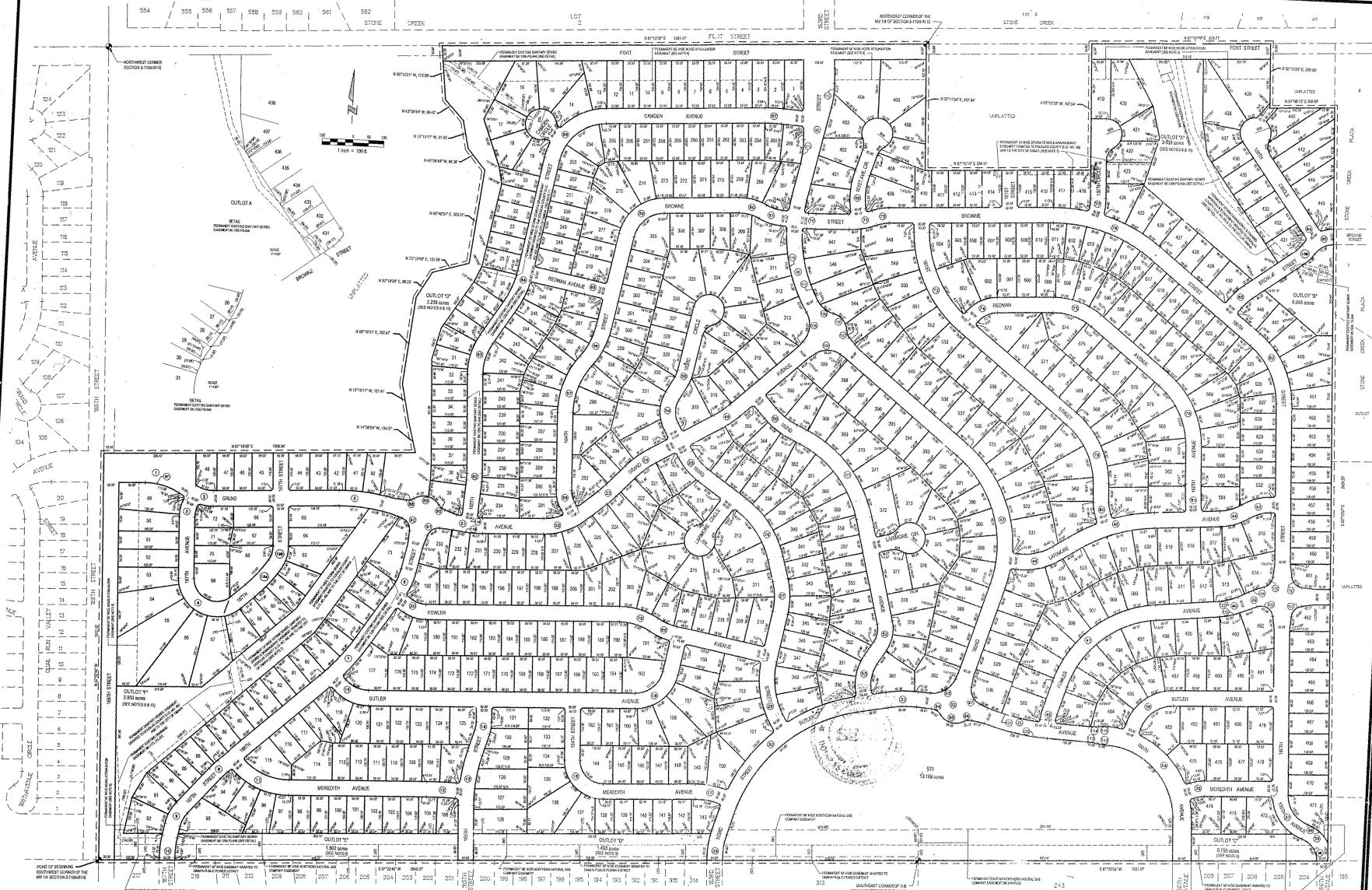
DEL ALS SCAN FV

E & A Consulting  
12001 Q St  
Omaha 68137



# STONE RIDGE

2019 S. 110th Street, Lincoln, NE  
 BEING A PLATTING OF PART OF THE NORTH 1/2 OF SECTION 16, TOWNSHIP 19 NORTH, RANGE 11 EAST OF THE 6TH P.M., DOUGLAS COUNTY, NEBRASKA



K:\Projects\20031829\01\Final\Design\PLAT-FINAL.dwg, 2048-NS (7/10/2), 0182004 11:20:47 AM, LARRY D

**E&A CONSULTING GROUP, INC.**  
 ENGINEERS - PLANNERS - SURVEYORS

**E&A**

1000 EAST 14TH STREET, SUITE 300  
 LINCOLN, NEBRASKA 68503  
 402.426.1111  
 WWW.EANDAGROUP.COM

STONE RIDGE  
 DEVELOPMENT

FINAL PLAT

DATE	BY	REVISION