



2131 450 DEED



12456 99 450-480

Nebr Doc Stamp Tax
Date
\$
By

RICHARD N. TAKECHI
REGISTER OF DEEDS
DOUGLAS COUNTY, NE

99 SEP -1 AM 11:11

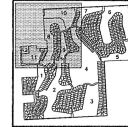
RECEIVED

**THIS PAGE INCLUDED FOR INDEXING
PAGE DOWN FOR BALANCE OF INSTRUMENT**

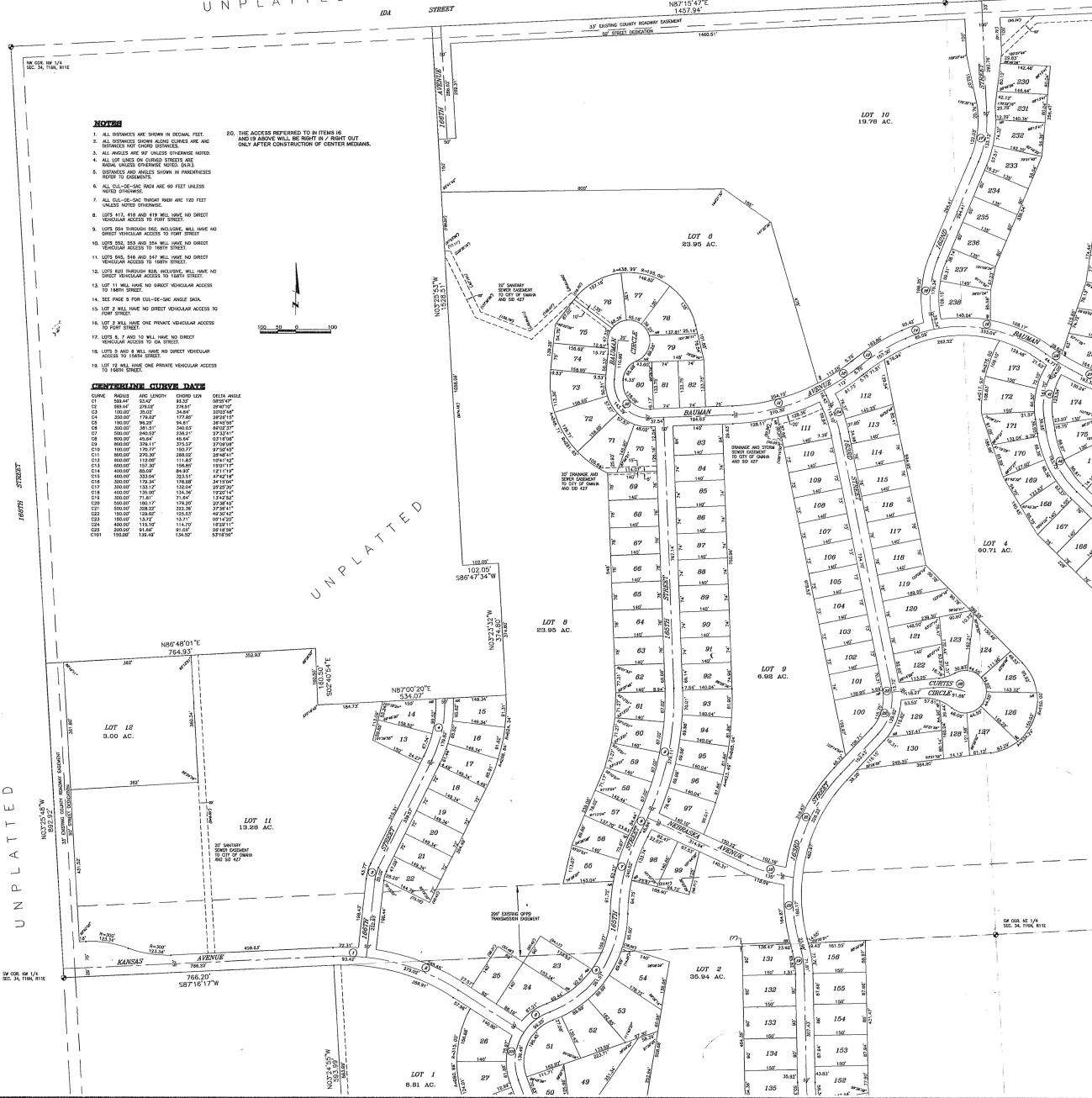
12456 F
 FEE 472.50 FB 01-60000-01d
 BKP 34-16-11 C/O _____ COMP BW
 DEL _____ SCAN dc FY _____

STONE CREEK

LOTS 1 THROUGH 634, INCLUSIVE, BEING A
PLATTING OF PART OF SECTION 34, TOWNSHIP
16 NORTH, RANGE 11 EAST OF THE 6TH P.M.
DOUGLAS COUNTY, NEBRASKA



UNPLATTED

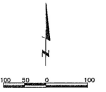


NOTES

1. ALL DIMENSIONS ARE SHOWN IN DECIMAL FEET.
2. ALL DIMENSIONS EXCEPT CORNER QUANTITIES ARE ANGLES AND DIMENSIONS NOT CHANGING.
3. ALL ANGLES ARE OF UNLESS OTHERWISE NOTED.
4. ALL LINES ARE ON CORNER STRIKES AND MARKS, UNLESS OTHERWISE NOTED. DATA.
5. DIMENSIONS AND ANGLES ARE SHOWN IN PARENTHESES REFER TO CORNER DATA.
6. ALL 66'-0" DE-DC-DC FROM ARE 90 FEET UNLESS NOTED OTHERWISE.
7. ALL 66'-0" DE-DC-DC FROM ARE 120 FEET UNLESS NOTED OTHERWISE.
8. LOTS 117, 118 AND 119 WILL HAVE NO DIRECT VEHICULAR ACCESS TO FOUR STREET.
9. LOTS 104 THROUGH 106, INCLUDING, WILL HAVE NO DIRECT VEHICULAR ACCESS TO FOUR STREET.
10. LOTS 103, 102 AND 101 WILL HAVE NO DIRECT VEHICULAR ACCESS TO SEVEN STREET.
11. LOTS 100, 99 AND 98 WILL HAVE NO DIRECT VEHICULAR ACCESS TO SEVEN STREET.
12. LOTS 97 THROUGH 95, INCLUDING, WILL HAVE NO DIRECT VEHICULAR ACCESS TO SEVEN STREET.
13. LOT 11 WILL HAVE NO DIRECT VEHICULAR ACCESS TO SEVEN STREET.
14. SEE PAGE 2 FOR 66'-0" DE-DC-DC ANGLE DATA.
15. LOT 7 WILL HAVE NO DIRECT VEHICULAR ACCESS TO FOUR STREET.
16. LOT 3 WILL HAVE ONE PRIVATE VEHICULAR ACCESS TO FOUR STREET.
17. LOTS 6, 7 AND 8 WILL HAVE NO DIRECT VEHICULAR ACCESS TO SIX STREET.
18. LOTS 9 AND 10 WILL HAVE NO DIRECT VEHICULAR ACCESS TO SEVEN STREET.
19. LOT 12 WILL HAVE ONE PRIVATE VEHICULAR ACCESS TO SEVEN STREET.

CURVE DATA

CURVE	BEARING	ARC LENGTH	CHORD LENGTH	DELTA ANGLE
C1	S88.44°E	291.07'	298.87'	30°00'00"
C2	S100.00°E	202.07'	204.84'	30°00'00"
C3	S00.00°E	179.87'	177.80'	30°00'00"
C4	S00.00°E	202.07'	204.84'	30°00'00"
C5	S00.00°E	202.07'	204.84'	30°00'00"
C6	S00.00°E	202.07'	204.84'	30°00'00"
C7	S00.00°E	202.07'	204.84'	30°00'00"
C8	S00.00°E	202.07'	204.84'	30°00'00"
C9	S00.00°E	202.07'	204.84'	30°00'00"
C10	S00.00°E	202.07'	204.84'	30°00'00"
C11	S00.00°E	202.07'	204.84'	30°00'00"
C12	S00.00°E	202.07'	204.84'	30°00'00"
C13	S00.00°E	202.07'	204.84'	30°00'00"
C14	S00.00°E	202.07'	204.84'	30°00'00"
C15	S00.00°E	202.07'	204.84'	30°00'00"
C16	S00.00°E	202.07'	204.84'	30°00'00"
C17	S00.00°E	202.07'	204.84'	30°00'00"
C18	S00.00°E	202.07'	204.84'	30°00'00"
C19	S00.00°E	202.07'	204.84'	30°00'00"
C20	S00.00°E	202.07'	204.84'	30°00'00"
C21	S00.00°E	202.07'	204.84'	30°00'00"
C22	S00.00°E	202.07'	204.84'	30°00'00"
C23	S00.00°E	202.07'	204.84'	30°00'00"
C24	S00.00°E	202.07'	204.84'	30°00'00"
C25	S00.00°E	202.07'	204.84'	30°00'00"
C26	S00.00°E	202.07'	204.84'	30°00'00"
C27	S00.00°E	202.07'	204.84'	30°00'00"



drawn by
designed by
reviewed by
revisions

path filename
9700501-003
reference
num

Lamp, Rynearson & Associates, Inc.
1770 West 40th Street, Suite 100
Lincoln, Nebraska 68506
TEL: 402-400-2700
FAX: 402-400-2702

STONE CREEK
DOUGLAS COUNTY, NEBRASKA

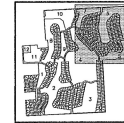
FINAL PLAT

Job number-task
9700501-003
book page
date
FEB. 12, 1998
sheet
1 of 5

C:\DMG\9703101.dwg Thu Dec 03 06:09:25 1998 Lamp, Rynearson & Associates (Alisha Tipton)

STONE CREEK

LOTS 1 THROUGH 634, INCLUSIVE, BEING A
PLATTING OF PART OF SECTION 34, TOWNSHIP
16 NORTH, RANGE 11 EAST OF THE 6TH P.M.
DOUGLAS COUNTY, NEBRASKA



UNPLATTED



- NOTES**
1. ALL DISTANCES ARE GIVEN IN DECIMAL FEET.
 2. ALL DISTANCES SHOWN ALONG CURVES ARE ARC DISTANCES UNLESS OTHERWISE NOTED.
 3. ALL ANGLES ARE IN DEGREES UNLESS OTHERWISE NOTED.
 4. ALL LOT LINES ON CURVED STREETS ARE RADIAL UNLESS OTHERWISE NOTED.
 5. DISTANCES AND ANGLES SHOWN IN PARAGRAPHS 10 THROUGH 19 ARE TO BE USED ONLY AFTER CONSTRUCTION OF CENTER MEDIAN.
 6. ALL 60'-30'-30' ROAD ARE 60 FEET UNLESS OTHERWISE NOTED.
 7. ALL 60'-30'-30' ROAD ARE 120 FEET UNLESS OTHERWISE NOTED.
 8. LOTS 417, 418 AND 419 WILL HAVE NO DIRECT VEHICULAR ACCESS TO FARM STREET.
 9. LOTS 314 THROUGH 343, INCLUDING 315, WILL HAVE NO DIRECT VEHICULAR ACCESS TO FARM STREET.
 10. LOTS 303, 304 AND 305 WILL HAVE NO DIRECT VEHICULAR ACCESS TO FARM STREET.
 11. LOTS 306, 307 AND 308 WILL HAVE NO DIRECT VEHICULAR ACCESS TO FARM STREET.
 12. LOTS 309 THROUGH 343, INCLUDING 310, WILL HAVE NO DIRECT VEHICULAR ACCESS TO FARM STREET.
 13. LOT 11 WILL HAVE NO DIRECT VEHICULAR ACCESS TO FARM STREET.
 14. SEE PAGE 5 FOR CURVE-SPECIFIC ANGLE DATA.
 15. LOT 3 WILL HAVE THE PRIVATE VEHICULAR ACCESS TO FARM STREET.
 16. LOTS 6, 7 AND 10 WILL HAVE NO DIRECT VEHICULAR ACCESS TO VAN DYKE STREET.
 17. LOTS 8 AND 9 WILL HAVE NO DIRECT VEHICULAR ACCESS TO FARM STREET.
 18. LOTS 11 AND 12 WILL HAVE THE PRIVATE VEHICULAR ACCESS TO FARM STREET.
 19. LOT 13 WILL HAVE THE PRIVATE VEHICULAR ACCESS TO FARM STREET.

20. THE ACCESS REFERRED TO IN ITEMS 6 THROUGH 19 ABOVE WILL BE REPORT BY ROW ON LOT ONLY AFTER CONSTRUCTION OF CENTER MEDIAN.

CURVE/CHORD DATA

CURVE	RADIUS	ARC LENGTH	CHORD LEN	CHORD ANGLE	BEARING	ARC LENGTH	CHORD LEN	CHORD ANGLE
C01	400.00'	141.37'	141.37'	90.00°	S 89.99° E	141.37'	141.37'	90.00°
C02	400.00'	141.37'	141.37'	90.00°	S 89.99° E	141.37'	141.37'	90.00°
C03	400.00'	141.37'	141.37'	90.00°	S 89.99° E	141.37'	141.37'	90.00°
C04	400.00'	141.37'	141.37'	90.00°	S 89.99° E	141.37'	141.37'	90.00°
C05	400.00'	141.37'	141.37'	90.00°	S 89.99° E	141.37'	141.37'	90.00°
C06	400.00'	141.37'	141.37'	90.00°	S 89.99° E	141.37'	141.37'	90.00°
C07	400.00'	141.37'	141.37'	90.00°	S 89.99° E	141.37'	141.37'	90.00°
C08	400.00'	141.37'	141.37'	90.00°	S 89.99° E	141.37'	141.37'	90.00°
C09	400.00'	141.37'	141.37'	90.00°	S 89.99° E	141.37'	141.37'	90.00°
C10	400.00'	141.37'	141.37'	90.00°	S 89.99° E	141.37'	141.37'	90.00°
C11	400.00'	141.37'	141.37'	90.00°	S 89.99° E	141.37'	141.37'	90.00°
C12	400.00'	141.37'	141.37'	90.00°	S 89.99° E	141.37'	141.37'	90.00°
C13	400.00'	141.37'	141.37'	90.00°	S 89.99° E	141.37'	141.37'	90.00°
C14	400.00'	141.37'	141.37'	90.00°	S 89.99° E	141.37'	141.37'	90.00°
C15	400.00'	141.37'	141.37'	90.00°	S 89.99° E	141.37'	141.37'	90.00°
C16	400.00'	141.37'	141.37'	90.00°	S 89.99° E	141.37'	141.37'	90.00°
C17	400.00'	141.37'	141.37'	90.00°	S 89.99° E	141.37'	141.37'	90.00°
C18	400.00'	141.37'	141.37'	90.00°	S 89.99° E	141.37'	141.37'	90.00°
C19	400.00'	141.37'	141.37'	90.00°	S 89.99° E	141.37'	141.37'	90.00°
C20	400.00'	141.37'	141.37'	90.00°	S 89.99° E	141.37'	141.37'	90.00°
C21	400.00'	141.37'	141.37'	90.00°	S 89.99° E	141.37'	141.37'	90.00°
C22	400.00'	141.37'	141.37'	90.00°	S 89.99° E	141.37'	141.37'	90.00°
C23	400.00'	141.37'	141.37'	90.00°	S 89.99° E	141.37'	141.37'	90.00°
C24	400.00'	141.37'	141.37'	90.00°	S 89.99° E	141.37'	141.37'	90.00°
C25	400.00'	141.37'	141.37'	90.00°	S 89.99° E	141.37'	141.37'	90.00°
C26	400.00'	141.37'	141.37'	90.00°	S 89.99° E	141.37'	141.37'	90.00°
C27	400.00'	141.37'	141.37'	90.00°	S 89.99° E	141.37'	141.37'	90.00°
C28	400.00'	141.37'	141.37'	90.00°	S 89.99° E	141.37'	141.37'	90.00°
C29	400.00'	141.37'	141.37'	90.00°	S 89.99° E	141.37'	141.37'	90.00°
C30	400.00'	141.37'	141.37'	90.00°	S 89.99° E	141.37'	141.37'	90.00°
C31	400.00'	141.37'	141.37'	90.00°	S 89.99° E	141.37'	141.37'	90.00°
C32	400.00'	141.37'	141.37'	90.00°	S 89.99° E	141.37'	141.37'	90.00°
C33	400.00'	141.37'	141.37'	90.00°	S 89.99° E	141.37'	141.37'	90.00°
C34	400.00'	141.37'	141.37'	90.00°	S 89.99° E	141.37'	141.37'	90.00°
C35	400.00'	141.37'	141.37'	90.00°	S 89.99° E	141.37'	141.37'	90.00°
C36	400.00'	141.37'	141.37'	90.00°	S 89.99° E	141.37'	141.37'	90.00°
C37	400.00'	141.37'	141.37'	90.00°	S 89.99° E	141.37'	141.37'	90.00°
C38	400.00'	141.37'	141.37'	90.00°	S 89.99° E	141.37'	141.37'	90.00°
C39	400.00'	141.37'	141.37'	90.00°	S 89.99° E	141.37'	141.37'	90.00°
C40	400.00'	141.37'	141.37'	90.00°	S 89.99° E	141.37'	141.37'	90.00°
C41	400.00'	141.37'	141.37'	90.00°	S 89.99° E	141.37'	141.37'	90.00°
C42	400.00'	141.37'	141.37'	90.00°	S 89.99° E	141.37'	141.37'	90.00°
C43	400.00'	141.37'	141.37'	90.00°	S 89.99° E	141.37'	141.37'	90.00°

C:\DWG\19703102.dwg Thu Dec 03 06:10:16 1998 Lamp, Rymerson & Associates (Alisha Tipton)

Design by
Drawn by
Reviewed by
Revisions

Dimensions
Incorporated
References

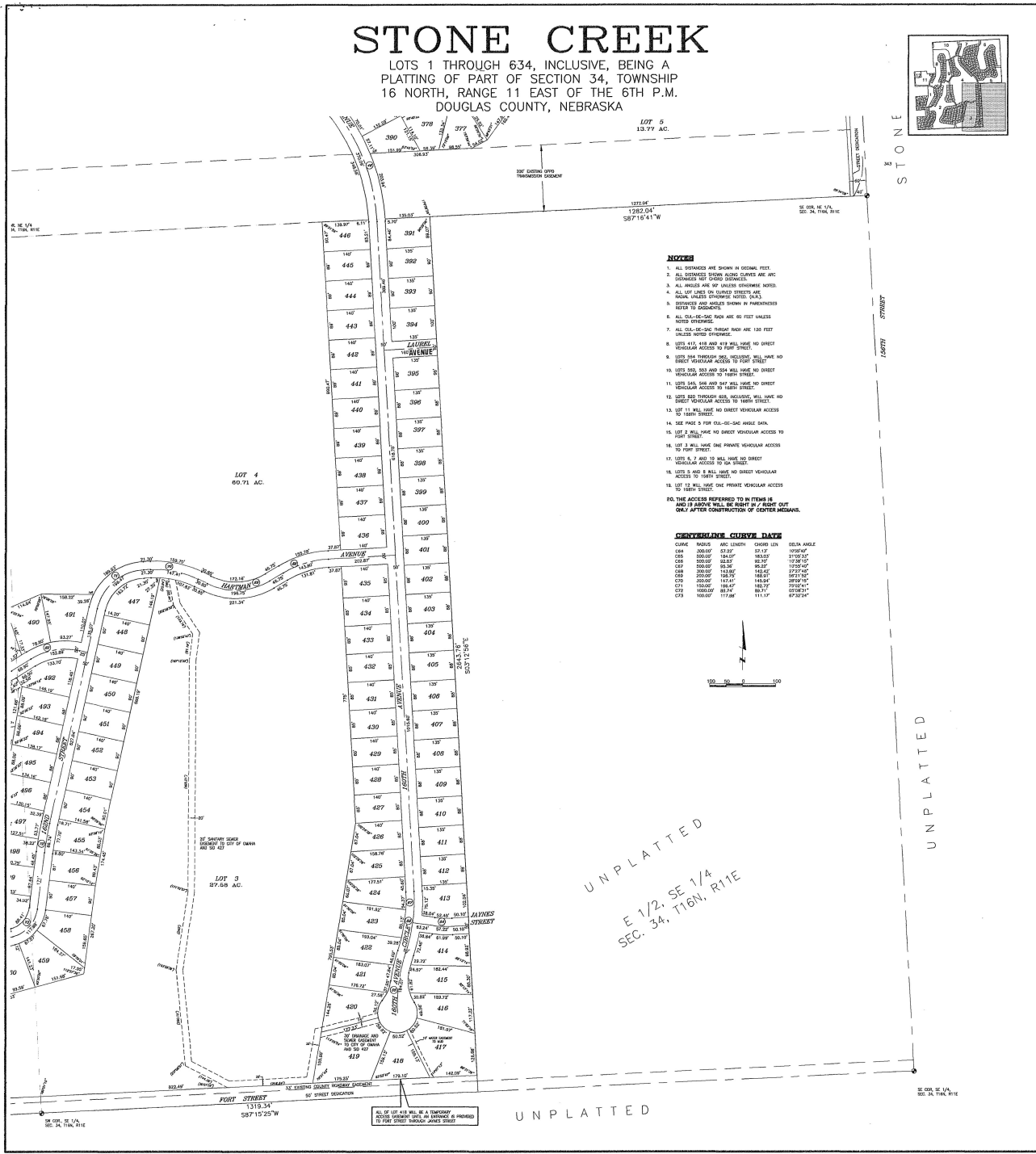
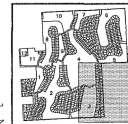
Stamp: Rymerson & Associates, Inc.
1601 West 10th Street
Omaha, NE 68102
Phone: 402-491-2200
Fax: 402-491-2200
STONE CREEK
DOUGLAS COUNTY, NEBRASKA

FINAL PLAT

Job number: 6003-003
Book: 1998
Date: Dec 12, 1998
Sheet: 2 of 5

STONE CREEK

LOTS 1 THROUGH 634, INCLUSIVE, BEING A
 PLATTING OF PART OF SECTION 34, TOWNSHIP
 16 NORTH, RANGE 11 EAST OF THE 6TH P.M.
 DOUGLAS COUNTY, NEBRASKA



- NOTES:**
1. ALL DIMENSIONS ARE SHOWN IN DECIMAL FEET.
 2. ALL DIMENSIONS SHOWN ALONG CURVES ARE ARC DIMENSIONS UNLESS OTHERWISE NOTED.
 3. ALL ANGLES ARE IN DEGREES UNLESS OTHERWISE NOTED.
 4. ALL CITY ADJACENT TO TOWNED STREETS, ARE
 5. DISTANCES AND ANGLES SHOWN IN PARENTHESES REFER TO ADJACENTS.
 6. ALL 60-DEGREE-ONE RADIUS ARE 80 FEET UNLESS OTHERWISE NOTED.
 7. ALL 60-DEGREE-ONE RADIUS ARE 120 FEET UNLESS OTHERWISE NOTED.
 8. LOTS 419, 418 AND 414 WILL HAVE NO DIRECT VEHICULAR ACCESS TO TOWN STREET.
 9. LOTS 394 THROUGH 392, RESIDUAL WILL HAVE NO DIRECT VEHICULAR ACCESS TO TOWN STREET.
 10. LOTS 395, 393 AND 394 WILL HAVE NO DIRECT VEHICULAR ACCESS TO TOWN STREET.
 11. LOTS 344, 346 AND 344 WILL HAVE NO DIRECT VEHICULAR ACCESS TO TOWN STREET.
 12. LOTS 400 THROUGH 398, RESIDUAL WILL HAVE NO DIRECT VEHICULAR ACCESS TO TOWN STREET.
 13. LOT 11 WILL HAVE NO DIRECT VEHICULAR ACCESS TO TOWN STREET.
 14. SEE PAGE 5 FOR 60-DEGREE-ONE RADIUS DATA.
 15. LOT 2 WILL HAVE NO DIRECT VEHICULAR ACCESS TO TOWN STREET.
 16. LOT 3 WILL HAVE ONE PRIVATE VEHICULAR ACCESS TO TOWN STREET.
 17. LOTS 4, 7 AND 12 WILL HAVE NO DIRECT VEHICULAR ACCESS TO TOWN STREET.
 18. LOTS 3 AND 6 WILL HAVE NO DIRECT VEHICULAR ACCESS TO TOWN STREET.
 19. LOT 13 WILL HAVE ONE PRIVATE VEHICULAR ACCESS TO TOWN STREET.

CURVE/RADIUS CURVE DATA

CURVE	RADIUS	ARC LENGTH	CHORD LEN	DELN ANGLE
134	228.00'	32.32'	39.32'	37.05°
135	228.00'	52.62'	62.32'	37.05°
136	228.00'	52.62'	62.32'	37.05°
137	228.00'	52.62'	62.32'	37.05°
138	228.00'	52.62'	62.32'	37.05°
139	228.00'	52.62'	62.32'	37.05°
140	228.00'	52.62'	62.32'	37.05°
141	228.00'	52.62'	62.32'	37.05°
142	228.00'	52.62'	62.32'	37.05°
143	228.00'	52.62'	62.32'	37.05°
144	228.00'	52.62'	62.32'	37.05°
145	228.00'	52.62'	62.32'	37.05°
146	228.00'	52.62'	62.32'	37.05°
147	228.00'	52.62'	62.32'	37.05°
148	228.00'	52.62'	62.32'	37.05°
149	228.00'	52.62'	62.32'	37.05°
150	228.00'	52.62'	62.32'	37.05°
151	228.00'	52.62'	62.32'	37.05°
152	228.00'	52.62'	62.32'	37.05°
153	228.00'	52.62'	62.32'	37.05°



drawn by: **ATT**
 designed by: **REP**
 reviewed by:
 revisions:
 path\l\l\name: **stonecreek.dwg**
 last modified: **11/20/99**
 reference: **none**

lamp, ryneerson & associates, inc.
 1111 S. OGDEN ST.
 SUITE 200
 OMAHA, NE 68106
 TEL: 402.488.2900
 FAX: 402.488.4000

STONE CREEK
 DOUGLAS COUNTY, NEBRASKA

FINAL PLAT

Job number: **587-152-25**
 book: **1999-000**
 page:
 date: **FEB. 12, 1999**
 sheet: **3 of 5**

C:\DWG\9703\03.dwg Thu Dec 03 08:11:23 1998 Lamp, Ryneerson & Associates (Klisha Tipton)

UNPLATTED

E 1/2, SE 1/4
 SEC. 34, T16N, R11E

UNPLATTED

UNPLATTED

