



BK 1468 PG 704-708



MISC 2002 25378

RICHARD N. JARVIS
REGISTER OF DEEDS
DOUGLAS COUNTY, NE

02 OCT 23 PM 2:55

RECEIVED

THIS PAGE INCLUDED FOR INDEXING
PAGE DOWN FOR BALANCE OF INSTRUMENT

H
FEB 25⁵⁰ FB 01-60000
5 BKP 35-16-11 C/O _____ COMP _____
T DEL _____ SCAN CA FV _____

Temp. 12.4.01

SANITARY AND IMPROVEMENT DISTRICT STATEMENT
DOUGLAS COUNTY, NEBRASKA

STATE OF NEBRASKA)
) ss.
COUNTY OF DOUGLAS)

Jim Emmons, being first duly sworn, states that he is the Clerk of Sanitary and Improvement District No. 482 of Douglas County, Nebraska and makes the following statement regarding same:

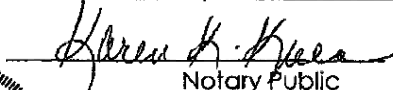
1. District Number: 482
2. Outer Boundaries: See Exhibit "A" attached hereto and by this reference made a part hereof.
3. The purpose of this District shall be acquiring, installing, repairing, maintaining, renewing, operating and replacing electrical service lines and conduits, a sewer system, a water system, a system of sidewalks, public roads, streets and highways, a civil defense warning system, to contract for water for fire protection and for resale to the residents of the District, and to contract for gas and electricity, for street lighting for the public streets and highways within the District and to acquire, improve and operate public parks, playgrounds and recreational facilities. The District shall have all of the powers and authorities as are permitted by law, to achieve the purposes herein above set forth, including, but not in limitation of the foregoing, the power and authority to contract with corporations, utility companies, or municipalities for water for fire protection and for resale to the residents of the District, and for electricity and gas, for street lighting of the public streets and highways within the District and for the disposal of sewage in the use of existing sewer improvement facilities and for the operation and maintenance of electrical service lines and conduits.
4. The District has the power to levy an unlimited property tax to pay its debts and its expenses of operation and maintenance.
5. The District is required by statute to levy special assessments on property in the District to the full extent of special benefits arising by reason of improvements installed by it.
6. In all years when a budget is required by law, the District's annual budget is filed with the County Clerk, which budget shows anticipated revenue and expenses, levy, and indebtedness of the District.
7. The actual current levy of the District may be obtained from the County Clerk.

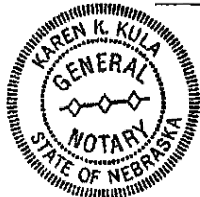
✓ 28844
FULLENKAMP, DOYLE & JOBELN
11440 WEST CENTER ROAD
OMAHA, NE 68144-4482
Haren

8. A copy of the District's annual financial audit is on file with the Clerk of the District and the State Auditor of Public Accounts.

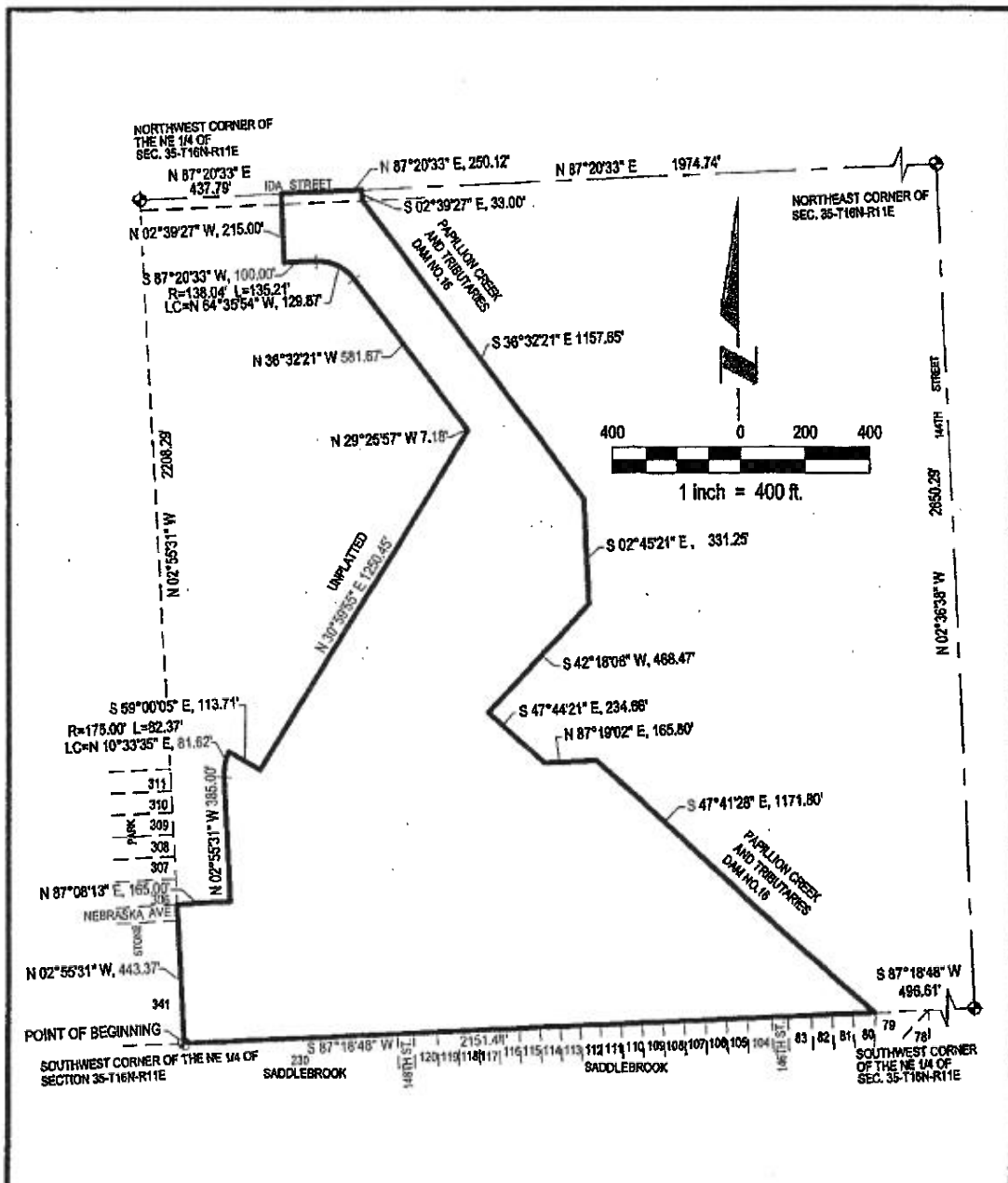

CLERK

SUBSCRIBED and sworn to before me this 20th day of October, 2002


Notary Public



MY COMMISSION EXPIRES:
JULY 26, 2005



SHEET 1 OF 2 SEE SHEET 2 OF 2 FOR LEGAL DESCRIPTION



E&A CONSULTING GROUP, INC.
 ENGINEERS • PLANNERS • SURVEYORS
1201 G STREET OMAHA, NE 68102 PHONE: (402) 336-4100

**DISTRICT BOUNDARY
 DOUGLAS COUNTY
 S.I.D. NO. 482**

Drawn by: TRH Chkd by: Date: Chkd by: Date:
 Job No.: 2002037.01 Date: 8-12-02 Book No.:

K:\Projects\2002037\p01\Plan\Final Design\SID-BOUNDARY.dwg, 8.5x14, 10/30/02 08:35:18 AM, TerryH

Exhibit "A"

LEGAL DESCRIPTION
SID NO. 482
DISTRICT BOUNDARY

A tract of land located in the NE 1/4 of Section 35, Township 16 North, Range 11 East of the 6th P.M., Douglas County, Nebraska, more particularly described as follows:

Beginning at the Southwest corner of said NE 1/4 of Section 35, said point also being the Southeast corner of Lot 341, Stone Park, a subdivision located in the NW 1/4 of said Section 35, said point also being on the North line of Lot 230, Saddlebrook (Lots 230 and 231), a subdivision located in the SE 1/4 of said Section 35; thence N02°55'31"W (assumed bearing) along the West line of said NE 1/4 of Section 35, said line also being the East line of said Stone Park, a distance of 443.37 feet to the Southeast corner of Lot 306, said Stone Park, said point also being the point of intersection of the East right-of-way line of Nebraska Avenue and North right-of-way line of said Nebraska Avenue; thence N87°08'13"E, a distance of 165.00 feet; thence N02°55'31"W, a distance of 385.00 feet; thence Northeasterly on a curve to the right with a radius of 175.00 feet, a distance of 82.37 feet, said curve having a long chord which bears N10°33'35"E, a distance of 81.62 feet; thence S59°00'05"E, a distance of 113.71 feet; thence N30°59'55"E, a distance of 1250.45 feet; thence N29°25'57"W, a distance of 7.18 feet; thence N36°32'21"W, a distance of 581.67 feet; thence Westerly on a curve to the left with a radius of 138.04 feet, a distance of 135.21 feet, said curve having a long chord which bears N64°35'54"W, a distance of 129.87 feet; thence S87°20'33"W, a distance of 100.00 feet; thence N02°39'27"W, a distance of 215.00 feet to a point on the North line of said NE 1/4 of Section 35; thence N87°20'33"E along said North line of the NE 1/4 of Section 35, a distance of 250.12 feet; thence S02°39'27"E, a distance of 33.00 feet to the point of intersection of the South right-of-way line of Ida Street and the Westerly line of Papillion Creek and Tributaries Dam #16; thence along said Westerly line of Papillion Creek and Tributaries Dam #16 on the following described courses; thence S36°32'21"E, a distance of 1157.65 feet; thence S02°45'21"E, a distance of 331.25 feet; thence S 42°18'06"W, a distance of 468.47 feet; thence S47°44'21"E, a distance of 234.66 feet; thence N87°19'02"E, a distance of 165.80 feet; thence S47°41'28"E, a distance of 1171.80 feet to a point on the South line of said NE 1/4 of Section 35, said point also being on the North line of Saddlebrook (Lots 1 thru 229), a subdivision located in said SE 1/4 of Section 35; thence S87°18'48"W along said South line of the NE 1/4 of Section 35, said line also being said North line of Saddlebrook (Lots 1 thru 229) and also the North line of said Saddlebrook (Lots 230 and 231), a distance of 2151.41 feet to the point of beginning.

Said tract of land contains an area of 2,190,401 square feet or 50.285 acres, more or less.

E & A CONSULTING GROUP, INC.
12001 "Q" STREET
OMAHA, NE 68137

#2002037.01 sw
10/01/02

SHEET 2 OF 2

K:\projects\2002\037\01\svy\docs

Exhibit "A"



MISC 2003199101

RICHARD H. TANECHI
REGISTER OF DEEDS
DOUGLAS COUNTY, NE.



OCT 10 2003 14:43 P 4

RECEIVED

(K)

4

FEE 20.50 FB 01-6000
BKP 35-16-1 C/O _____ COMP _____
DE _____

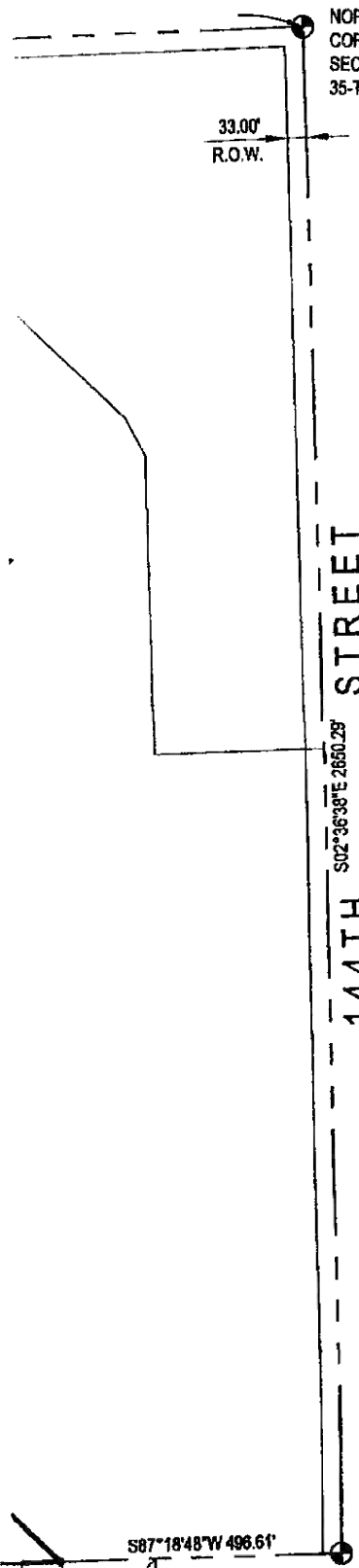
SUPPLEMENTAL
SANITARY AND IMPROVEMENT DISTRICT STATEMENT
DOUGLAS COUNTY, NEBRASKA

STATE OF NEBRASKA)
) ss.
COUNTY OF DOUGLAS)

Jim Emmons being first duly sworn, states that he is the Clerk of Sanitary and Improvement District No. 482 of Douglas County, Nebraska and makes the following statement regarding same:

1. District Number: 482
2. Outer Boundaries: See Exhibit "A" attached hereto and by this reference made a part hereof.
3. The purpose of this District shall be acquiring, installing, repairing, maintaining, renewing, operating and replacing electrical service lines and conduits, a sewer system, a water system, a system of sidewalks, public roads, streets and highways, a civil defense warning system, to contract for water for fire protection and for resale to the residents of the District, and to contract for gas and electricity, for street lighting for the public streets and highways within the District and to acquire, improve and operate public parks, playgrounds and recreational facilities. The District shall have all of the powers and authorities as are permitted by law, to achieve the purposes hereinabove set forth, including, but not in limitation of the foregoing, the power and authority to contract with corporations, utility companies, or municipalities for water for fire protection and for resale to the residents of the District, and for electricity and gas, for street lighting of the public streets and highways within the District and for the disposal of sewage in the use of existing sewer improvement facilities and for the operation and maintenance of electrical service lines and conduits.
4. The District has the power to levy an unlimited property tax to pay its debts and its expenses of operation and maintenance.

← FULLenkamp, DOYLE & JOBEUN
11440 WEST CENTER ROAD
OMAHA, NE 68144-4482
Karen



NORTHEAST
CORNER OF
SECTION
35-T16N-R11E

33.00'
R.O.W.

144TH
STREET

S02°36'38"E 2660.29'

PAPILLION CREEK
AND TRIBUTARIES
DAM NO. 16

SOUTHEAST CORNER
OF THE NE 1/4 OF
SECTION 35-T16N-R11E

587°18'48"W 496.61'

OK

LEGAL DESCRIPTION
DISTRICT BOUNDARY
DOUGLAS COUNTY S. & I. D. NO. 482

A tract of land located in the NE 1/4 of Section 35, Township 16 North, Range 11 East of the 6th P.M., Douglas County, Nebraska, more particularly described as follows:

Beginning at the Southwest corner of said NE 1/4 of Section 35, said point also being the Southeast corner of Lot 341, Stone Park, a subdivision located in the NW 1/4 of said Section 35, said point also being on the North line of Lot 230, Saddlebrook (Lots 230 and 231), a subdivision located in the South 1/2 of said Section 35; thence N02°55'31"W (assumed bearing) along the West line of said NE 1/4 of Section 35, said line also being the East line of said Stone Park, a distance of 1325.83 feet to the Northwest corner of the SW 1/4 of said NE 1/4 of Section 35; thence N02°55'40"W along said West line of the NE 1/4 of Section 35, said line also being said East line of Stone Park and the Northerly extension thereof, a distance of 1325.83 feet to the Northwest corner of said NE 1/4 of Section 35; thence N87°20'33"E along the North line of said NE 1/4 of Section 35, a distance of 687.91 feet; thence S02°39'27"E, a distance of 33.00 feet to the point of intersection of the South right-of-way line of Ida Street and the Westerly line of Papillion Creek and Tributaries Dam No. 16; thence along said Westerly line of Papillion Creek and Tributaries Dam No. 16 on the following described courses; thence S36°32'21"E, a distance of 1157.65 feet; thence S02°45'21"E, a distance of 331.25 feet; thence S42°18'06"W, a distance of 468.47 feet; thence S47°44'21"E, a distance of 234.66 feet; thence N87°19'02"E, a distance of 165.80 feet; thence S47°41'28"E, a distance of 1171.80 feet to a point on the South line of said NE 1/4 of Section 35, said line also being the North line of Saddlebrook (Lots 1 thru 229, inclusive), a subdivision located in said SE 1/4 of Section 35; thence S87°18'48"W along said South line of the NE 1/4 of Section 35, said line also being said North line of Saddlebrook (Lots 1 thru 229, inclusive) and also said North line of Lot 230, Saddlebrook (Lots 229 and 230), a distance of 2151.41 feet to the point of beginning.

Said tract of land contains an area of 3,436,095 square feet or 78.882 acres, more or less.

Exhibit "A"

E&A CONSULTING GROUP, INC.
ENGINEERS • PLANNERS • SURVEYORS



7130 SOUTH 28TH STREET, SUITE D
LINCOLN, NE 68516-5841
PHONE: (402) 420-7217
FAX: (402) 420-7218

12001 Q STREET
OMAHA, NE 68137
PHONE: (402) 895-4700
FAX: (402) 895-3598

DISTRICT BOUNDARY
DOUGLAS COUNTY
S. & I. D. NO. 482

Drawn By: J.A.F.
Chkd by: _____
Date: _____
Chkd by: _____
Date: _____

Proj: 2002037.01
Date: 10/02/2003
Scale: 1" = 300'
Sheet No: 1 of 1