



2020-38848

11/16/2020 09:35:16 AM

Recording fees paid:

\$28.00

Pages: 4

Deb Houghtaling

COUNTY CLERK/REGISTER OF DEEDS

By: pm



SID

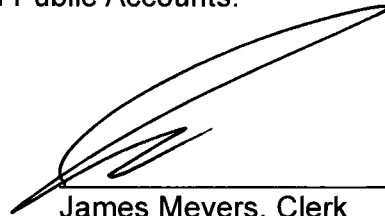
SANITARY AND IMPROVEMENT DISTRICT STATEMENT
SARPY COUNTY, NEBRASKA

STATE OF NEBRASKA)
)ss.
COUNTY OF DOUGLAS)

James Meyers, being first duly sworn, states that he is the Clerk of Sanitary and Improvement District No. 348 of Sarpy County, Nebraska, and makes the following statement regarding same:

1. District Number: 348
2. Outer Boundaries: See Exhibit "A" attached hereto.
3. The purposes for which the District is organized are, in general, to acquire, build, improve, install, maintain, remove, renew, repair, replace, or otherwise conduct of operate electric service lines and conduits, a system of sanitary and storm sewers, a water system, a civil defense warning system, a system of sidewalks, public highways, roads, and streets, public waterways, docks or wharfs, and related appurtenances, dikes and levees for flood protection, and public parks, playgrounds and other recreational facilities, to contract with any one or more corporations, municipalities, or persons for electricity for illumination of public highways, roads and streets, for gas, for police protection and security services, for water for fire protection and resale to or use by residents within the district, and for disposal of or use of facilities for disposal of refuse, sewage, or other wastes, to contract with other governmental authorities and subdivisions in accordance with the provisions of the Interlocal Cooperation Act (Sections 23-2001 to 23-2007, Reissued Revised Statutes of Nebraska, 1943) as now in effect or as may be hereafter amended, and to perform any one or more other functions now or hereafter permitted under the provisions of Sections 31-727 to 31-793, Reissue Revised Statutes of Nebraska, 1943, as amended, or any other applicable provisions of law; and, for the effectuation of its purposes, the powers of the district include, without limitation all powers now or hereafter granted to under said provisions and all other powers now or hereafter granted to public corporations under the law of Nebraska appropriate, convenient or necessary to said purposes.

4. The District has the power to levy an unlimited property tax to pay its debt and its expenses of operation and maintenance.
5. The District is required by law to levy special assessments on property in the District to the full extent of special benefits arising by reason of improvements installed by it and may further be required to levy such special assessments in accordance with the terms of a Subdivision Agreement with the City of Papillion.
6. In all years when a budget is required by law, the District's annual budget is filed with the Sarpy County Clerk, which budget shows anticipated revenue and expenses, tax rate (mill levy), and indebtedness of the District.
7. The actual current tax rate (mill levy) of the District may be obtained from the Sarpy County Clerk.
8. A copy of the District's annual financial audit is on file with the Clerk of the District and the State Auditor of Public Accounts.



James Meyers, Clerk

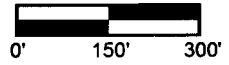
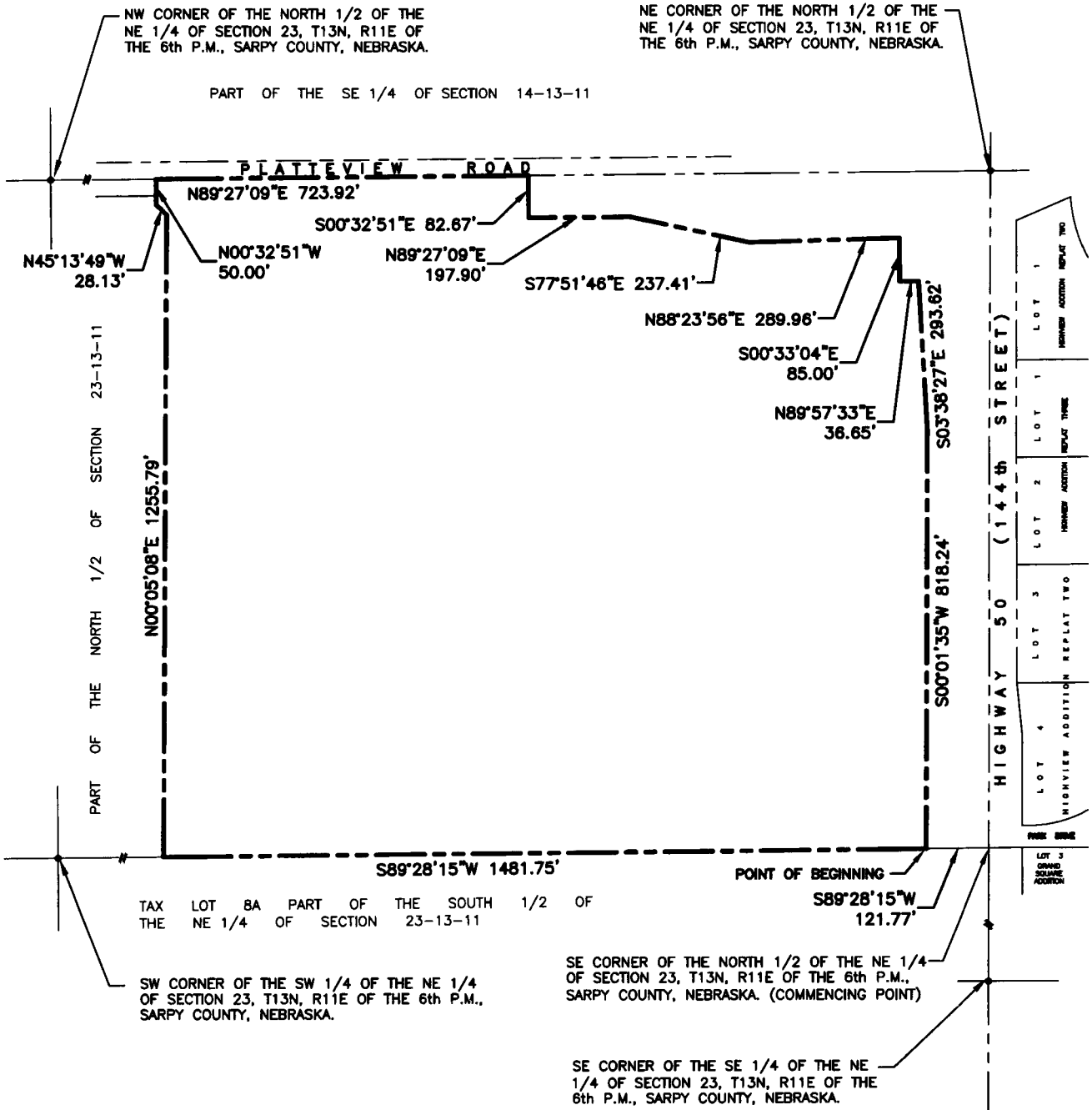
SUBSCRIBED and sworn to before me this 28th day of October, 2020.



Notary Public

E+P

FARNHAM & GRIFFIN, P.C., L.L.O.
ATTORNEYS AT LAW
220 NORTH 89TH STREET
SUITE 201
OMAHA, NEBRASKA 68114



Job Number: 179-126
 thompson, dreessen & dornier, inc.
 10836 Old Mill Rd
 Omaha, NE 68154
 p.402.330.8860 www.td2co.com

Date: 10-05-2020
 Drawn By: MEM
 Reviewed By: JDW
 Revision Date: ..

Legal Description

Exhibit A

LEGAL DESCRIPTION

THAT PART OF THE NORTH 1/2 OF THE NE 1/4 OF SECTION 23, T13N, R11E OF THE 6th P.M., SARPY COUNTY, NEBRASKA, DESCRIBED AS FOLLOWS, COMMENCING AT THE SE CORNER OF SAID NORTH 1/2;

THENCE S89°28'15"W (ASSUMED BEARING) 121.77 FEET ON THE SOUTH LINE OF SAID NORTH 1/2 TO THE WEST LINE OF HIGHWAY 50 AND THE POINT OF BEGINNING;

THENCE CONTINUING S89°28'15"W 1481.75 FEET ON THE SOUTH LINE OF SAID NORTH 1/2;

THENCE N00°05'08"E 1255.79 TO A POINT 70.00 FEET SOUTH OF THE NORTH LINE OF SAID NORTH 1/2;

THENCE N45°13'49"W 28.13 FEET TO A POINT 50.00 FEET SOUTH OF THE NORTH LINE OF SAID NORTH 1/2;

THENCE N00°32'51"W 50.00 FEET TO THE NORTH LINE OF SAID NE 1/4;

THENCE N89°27'09"E 723.92 FEET ON THE NORTH LINE OF SAID NE 1/4;

THENCE S00°32'51"E 82.67 FEET TO THE SOUTH LINE OF PLATTEVIEW ROAD;

THENCE N89°27'09"E 197.90 FEET ON THE SOUTH LINE OF PLATTEVIEW ROAD;

THENCE S77°51'46"E 237.41 FEET ON THE SOUTH LINE OF PLATTEVIEW ROAD;

THENCE N88°23'56"E 289.96 FEET ON THE SOUTH LINE OF PLATTEVIEW ROAD TO THE WEST LINE OF HIGHWAY 50;

THENCE S00°33'04"E 85.00 FEET ON THE WEST LINE OF HIGHWAY 50;

THENCE N89°57'33"E 36.65 FEET ON THE WEST LINE OF HIGHWAY 50;

THENCE S03°38'27"E 293.62 FEET ON THE WEST LINE OF HIGHWAY 50;

THENCE S00°01'35"W 818.24 FEET ON THE WEST LINE OF HIGHWAY 50 TO THE POINT OF BEGINNING.

CONTAINING 42.866 ACRES MORE OR LESS

TD2

Job Number: 179-126

thompson, dreessen & dorner, inc.
10836 Old Mill Rd
Omaha, NE 68154
p.402.330.8860 www.td2co.com

Date: 10-05-2020

Drawn By: MEM

Reviewed By: JDW

Revision Date: ..

Legal Description

Exhibit A

Page 2 of 2