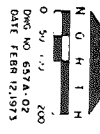
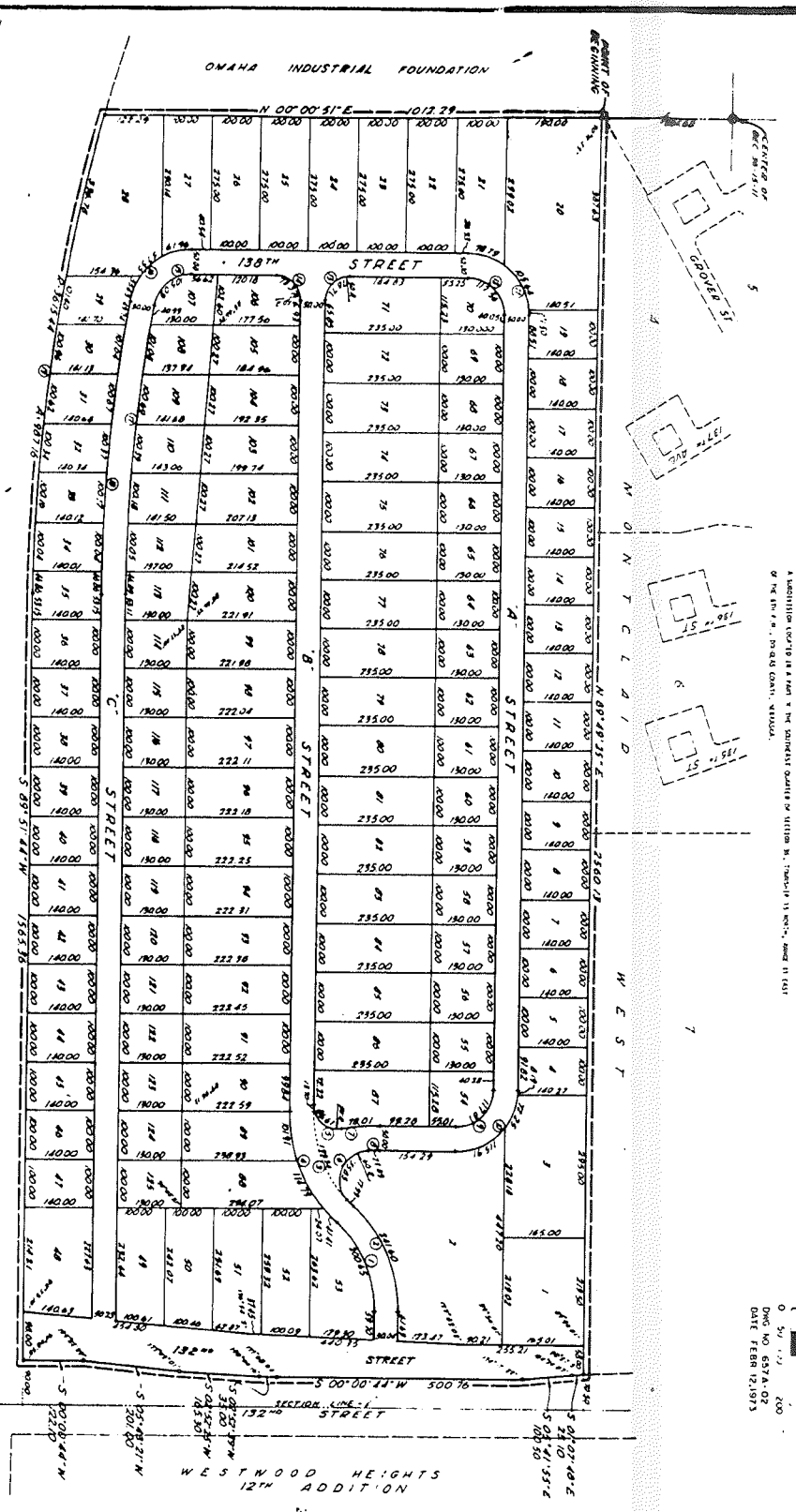


SOUTHWEST PARK

A subdivision located in the City of Omaha, Nebraska, in the County of Douglas, State of Nebraska, as shown on the attached plat.



Lot No.	Area (Sq. Ft.)	Area (Sq. Meters)
1	4,125.00	381.00
2	4,125.00	381.00
3	4,125.00	381.00
4	4,125.00	381.00
5	4,125.00	381.00
6	4,125.00	381.00
7	4,125.00	381.00
8	4,125.00	381.00
9	4,125.00	381.00
10	4,125.00	381.00
11	4,125.00	381.00
12	4,125.00	381.00
13	4,125.00	381.00
14	4,125.00	381.00
15	4,125.00	381.00
16	4,125.00	381.00
17	4,125.00	381.00
18	4,125.00	381.00
19	4,125.00	381.00
20	4,125.00	381.00
21	4,125.00	381.00
22	4,125.00	381.00
23	4,125.00	381.00
24	4,125.00	381.00
25	4,125.00	381.00
26	4,125.00	381.00
27	4,125.00	381.00
28	4,125.00	381.00
29	4,125.00	381.00
30	4,125.00	381.00
31	4,125.00	381.00
32	4,125.00	381.00
33	4,125.00	381.00
34	4,125.00	381.00
35	4,125.00	381.00
36	4,125.00	381.00
37	4,125.00	381.00
38	4,125.00	381.00
39	4,125.00	381.00
40	4,125.00	381.00
41	4,125.00	381.00
42	4,125.00	381.00
43	4,125.00	381.00
44	4,125.00	381.00
45	4,125.00	381.00
46	4,125.00	381.00
47	4,125.00	381.00
48	4,125.00	381.00
49	4,125.00	381.00
50	4,125.00	381.00
51	4,125.00	381.00
52	4,125.00	381.00
53	4,125.00	381.00
54	4,125.00	381.00
55	4,125.00	381.00
56	4,125.00	381.00
57	4,125.00	381.00
58	4,125.00	381.00
59	4,125.00	381.00
60	4,125.00	381.00
61	4,125.00	381.00
62	4,125.00	381.00
63	4,125.00	381.00
64	4,125.00	381.00
65	4,125.00	381.00
66	4,125.00	381.00
67	4,125.00	381.00
68	4,125.00	381.00
69	4,125.00	381.00
70	4,125.00	381.00
71	4,125.00	381.00
72	4,125.00	381.00
73	4,125.00	381.00
74	4,125.00	381.00
75	4,125.00	381.00
76	4,125.00	381.00
77	4,125.00	381.00
78	4,125.00	381.00
79	4,125.00	381.00
80	4,125.00	381.00

OMAHA INDUSTRIAL FOUNDATION

UNION PACIFIC RAILROAD R.O.W.

WESTWOOD HEIGHTS 12TH ADDITION

COMMISSIONERS OF PUBLIC LANDS
STATE OF NEBRASKA
I, John J. Anderson, Register of Deeds for the County of Douglas, State of Nebraska, do hereby certify that the above and foregoing plat of the subdivision of the land described in the foregoing plat, as shown on the attached plat, is a true and correct copy of the original plat on file in my office.

COMMISSIONERS OF PUBLIC LANDS
STATE OF NEBRASKA
I, John J. Anderson, Register of Deeds for the County of Douglas, State of Nebraska, do hereby certify that the above and foregoing plat of the subdivision of the land described in the foregoing plat, as shown on the attached plat, is a true and correct copy of the original plat on file in my office.

NOTICE TO CERTIFICATE
I, John J. Anderson, Register of Deeds for the County of Douglas, State of Nebraska, do hereby certify that the above and foregoing plat of the subdivision of the land described in the foregoing plat, as shown on the attached plat, is a true and correct copy of the original plat on file in my office.

NOTICE TO CERTIFICATE
I, John J. Anderson, Register of Deeds for the County of Douglas, State of Nebraska, do hereby certify that the above and foregoing plat of the subdivision of the land described in the foregoing plat, as shown on the attached plat, is a true and correct copy of the original plat on file in my office.

GOLLEMON, SCHEMNER & ASSOCIATES, INC.
ARCHITECTS - ENGINEERS - PLANNERS
OMAHA, NEBRASKA
DAVENPORT, IOWA

WOOD HEIGHTS
12TH ADDITION

21

DEDICATION:

KNOW ALL MEN BY THESE PRESENTS, THAT INDUSTRIAL FIVE, A NEBRASKA CORPORATION, FRANKLIN P. ROGERS, PRESIDENT, AND LAND HOLDING CO., A NEBRASKA CORPORATION, ROBERT O. HANEY, PRESIDENT AND SIDLES ENTERPRISES INC., A NEBRASKA CORPORATION, DANIEL O. WYMAN, JR., PRESIDENT, BEING SOLE OWNERS AND PROPRIETORS OF THE LAND DESCRIBED WITHIN THE SUPERVISOR'S CERTIFICATE AND EMBRACED WITHIN THIS PLAT HAVE CAUSED SAID PLAT TO BE SUBDIVIDED INTO LOTS AND STREETS TO BE NUMBERED AND NAMED AS SHOWN. SAID SUBDIVISION TO BE HEREAFTER KNOWN AS SOUTHWEST PARK AND WE DO HEREBY RATIFY AND APPROVE OF THE DISPOSITION OF OUR PROPERTY AS SHOWN ON THIS PLAT; AND WE HEREBY DEDICATE TO THE PUBLIC FOR PUBLIC USE THE STREETS AND SEWER AND DRAINAGE EASEMENTS AS SHOWN ON THIS PLAT. THE ABOVE OR FOREGOING SUBDIVISION IS A PART OF THE SOUTHEAST QUARTER OF SECTION 30, TOWNSHIP 19 NORTH, RANGE 11 EAST OF THE 6TH P.M., DISTRICT OF NEBRASKA AS APPEARS ON THIS PLAT AS MADE WITH FREE CONSENT AND IN ACCORDANCE WITH THE DESIRE OF THE UNDER-SIGNED OWNERS AND PROPRIETORS.

IN WITNESS WHEREOF WE DO HEREBY SET OUR HANDS THIS

21ST DAY OF

February

A.D., 19*79*

INDUSTRIAL FIVE

LAND HOLDING CO.

SIDLES ENTERPRISES INC.

[Signature]

