

# SOUTHGATE ESTATES

LOTS 1 THRU 45, INCLUSIVE  
 BEING A PORTION OF THE S 1/2 OF THE NW 1/4  
 AND PART OF THE NW 1/4 OF SECTION 20,  
 T18N, R10E, S49, NEBRASKA, COE OF  
 THE CITY OF SARPY COUNTY, NEBRASKA.

RECORDS OF THE COUNTY CLERK OF SARPY COUNTY, NEBRASKA, SHOWING THE FOLLOWING INSTRUMENTS:

APPROVED FOR THE CITY OF SARPY COUNTY, NEBRASKA, BY THE CITY CLERK, SARPY COUNTY, NEBRASKA, ON THIS 14TH DAY OF APRIL, 1992.

APPROVED FOR THE CITY OF SARPY COUNTY, NEBRASKA, BY THE CITY CLERK, SARPY COUNTY, NEBRASKA, ON THIS 14TH DAY OF APRIL, 1992.

APPROVED FOR THE CITY OF SARPY COUNTY, NEBRASKA, BY THE CITY CLERK, SARPY COUNTY, NEBRASKA, ON THIS 14TH DAY OF APRIL, 1992.

APPROVED FOR THE CITY OF SARPY COUNTY, NEBRASKA, BY THE CITY CLERK, SARPY COUNTY, NEBRASKA, ON THIS 14TH DAY OF APRIL, 1992.

APPROVED FOR THE CITY OF SARPY COUNTY, NEBRASKA, BY THE CITY CLERK, SARPY COUNTY, NEBRASKA, ON THIS 14TH DAY OF APRIL, 1992.

APPROVED FOR THE CITY OF SARPY COUNTY, NEBRASKA, BY THE CITY CLERK, SARPY COUNTY, NEBRASKA, ON THIS 14TH DAY OF APRIL, 1992.

APPROVED FOR THE CITY OF SARPY COUNTY, NEBRASKA, BY THE CITY CLERK, SARPY COUNTY, NEBRASKA, ON THIS 14TH DAY OF APRIL, 1992.

APPROVED FOR THE CITY OF SARPY COUNTY, NEBRASKA, BY THE CITY CLERK, SARPY COUNTY, NEBRASKA, ON THIS 14TH DAY OF APRIL, 1992.

APPROVED FOR THE CITY OF SARPY COUNTY, NEBRASKA, BY THE CITY CLERK, SARPY COUNTY, NEBRASKA, ON THIS 14TH DAY OF APRIL, 1992.

APPROVED FOR THE CITY OF SARPY COUNTY, NEBRASKA, BY THE CITY CLERK, SARPY COUNTY, NEBRASKA, ON THIS 14TH DAY OF APRIL, 1992.

APPROVED FOR THE CITY OF SARPY COUNTY, NEBRASKA, BY THE CITY CLERK, SARPY COUNTY, NEBRASKA, ON THIS 14TH DAY OF APRIL, 1992.

APPROVED FOR THE CITY OF SARPY COUNTY, NEBRASKA, BY THE CITY CLERK, SARPY COUNTY, NEBRASKA, ON THIS 14TH DAY OF APRIL, 1992.

APPROVED FOR THE CITY OF SARPY COUNTY, NEBRASKA, BY THE CITY CLERK, SARPY COUNTY, NEBRASKA, ON THIS 14TH DAY OF APRIL, 1992.

APPROVED FOR THE CITY OF SARPY COUNTY, NEBRASKA, BY THE CITY CLERK, SARPY COUNTY, NEBRASKA, ON THIS 14TH DAY OF APRIL, 1992.

APPROVED FOR THE CITY OF SARPY COUNTY, NEBRASKA, BY THE CITY CLERK, SARPY COUNTY, NEBRASKA, ON THIS 14TH DAY OF APRIL, 1992.

APPROVED FOR THE CITY OF SARPY COUNTY, NEBRASKA, BY THE CITY CLERK, SARPY COUNTY, NEBRASKA, ON THIS 14TH DAY OF APRIL, 1992.

APPROVED FOR THE CITY OF SARPY COUNTY, NEBRASKA, BY THE CITY CLERK, SARPY COUNTY, NEBRASKA, ON THIS 14TH DAY OF APRIL, 1992.

APPROVED FOR THE CITY OF SARPY COUNTY, NEBRASKA, BY THE CITY CLERK, SARPY COUNTY, NEBRASKA, ON THIS 14TH DAY OF APRIL, 1992.

APPROVED FOR THE CITY OF SARPY COUNTY, NEBRASKA, BY THE CITY CLERK, SARPY COUNTY, NEBRASKA, ON THIS 14TH DAY OF APRIL, 1992.

APPROVED FOR THE CITY OF SARPY COUNTY, NEBRASKA, BY THE CITY CLERK, SARPY COUNTY, NEBRASKA, ON THIS 14TH DAY OF APRIL, 1992.

APPROVED FOR THE CITY OF SARPY COUNTY, NEBRASKA, BY THE CITY CLERK, SARPY COUNTY, NEBRASKA, ON THIS 14TH DAY OF APRIL, 1992.

APPROVED FOR THE CITY OF SARPY COUNTY, NEBRASKA, BY THE CITY CLERK, SARPY COUNTY, NEBRASKA, ON THIS 14TH DAY OF APRIL, 1992.

APPROVED FOR THE CITY OF SARPY COUNTY, NEBRASKA, BY THE CITY CLERK, SARPY COUNTY, NEBRASKA, ON THIS 14TH DAY OF APRIL, 1992.

APPROVED FOR THE CITY OF SARPY COUNTY, NEBRASKA, BY THE CITY CLERK, SARPY COUNTY, NEBRASKA, ON THIS 14TH DAY OF APRIL, 1992.

APPROVED FOR THE CITY OF SARPY COUNTY, NEBRASKA, BY THE CITY CLERK, SARPY COUNTY, NEBRASKA, ON THIS 14TH DAY OF APRIL, 1992.

APPROVED FOR THE CITY OF SARPY COUNTY, NEBRASKA, BY THE CITY CLERK, SARPY COUNTY, NEBRASKA, ON THIS 14TH DAY OF APRIL, 1992.

APPROVED FOR THE CITY OF SARPY COUNTY, NEBRASKA, BY THE CITY CLERK, SARPY COUNTY, NEBRASKA, ON THIS 14TH DAY OF APRIL, 1992.

APPROVED FOR THE CITY OF SARPY COUNTY, NEBRASKA, BY THE CITY CLERK, SARPY COUNTY, NEBRASKA, ON THIS 14TH DAY OF APRIL, 1992.

APPROVED FOR THE CITY OF SARPY COUNTY, NEBRASKA, BY THE CITY CLERK, SARPY COUNTY, NEBRASKA, ON THIS 14TH DAY OF APRIL, 1992.

APPROVED FOR THE CITY OF SARPY COUNTY, NEBRASKA, BY THE CITY CLERK, SARPY COUNTY, NEBRASKA, ON THIS 14TH DAY OF APRIL, 1992.

APPROVED FOR THE CITY OF SARPY COUNTY, NEBRASKA, BY THE CITY CLERK, SARPY COUNTY, NEBRASKA, ON THIS 14TH DAY OF APRIL, 1992.

APPROVED FOR THE CITY OF SARPY COUNTY, NEBRASKA, BY THE CITY CLERK, SARPY COUNTY, NEBRASKA, ON THIS 14TH DAY OF APRIL, 1992.

APPROVED FOR THE CITY OF SARPY COUNTY, NEBRASKA, BY THE CITY CLERK, SARPY COUNTY, NEBRASKA, ON THIS 14TH DAY OF APRIL, 1992.

APPROVED FOR THE CITY OF SARPY COUNTY, NEBRASKA, BY THE CITY CLERK, SARPY COUNTY, NEBRASKA, ON THIS 14TH DAY OF APRIL, 1992.

APPROVED FOR THE CITY OF SARPY COUNTY, NEBRASKA, BY THE CITY CLERK, SARPY COUNTY, NEBRASKA, ON THIS 14TH DAY OF APRIL, 1992.

APPROVED FOR THE CITY OF SARPY COUNTY, NEBRASKA, BY THE CITY CLERK, SARPY COUNTY, NEBRASKA, ON THIS 14TH DAY OF APRIL, 1992.

FINAL PLAT

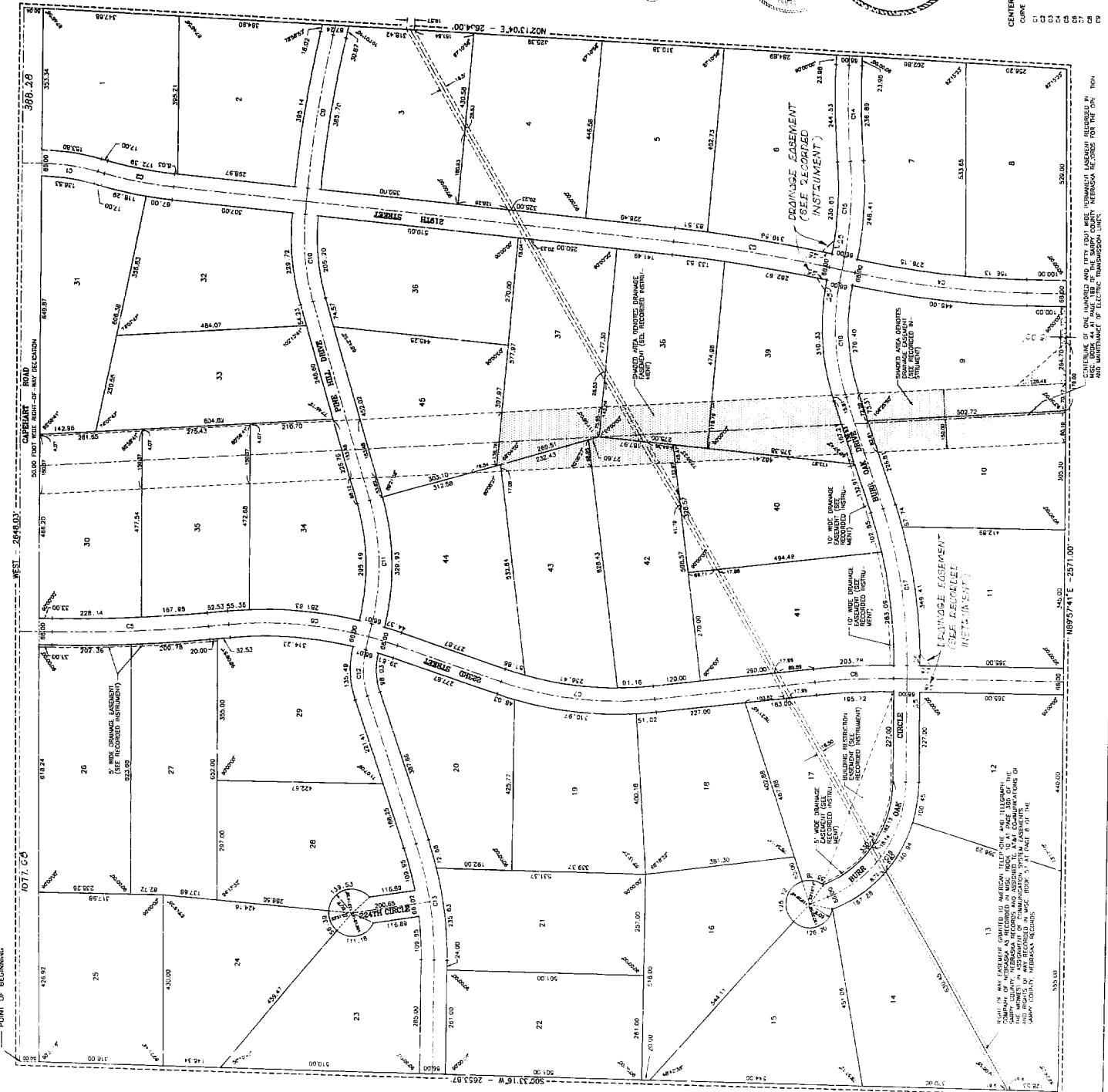
SOUTHGATE ESTATES

SCALE	AS SHOWN
DATE	4-8-93
DRAWN BY	RAH
PROJECT NO.	WPD
REVISION	

THOMPSON, DREESSEN & DORNER  
 Consulting Engineers & Land Surveyors  
 1825 OLD MILL ROAD  
 OMAHA, NE 68154  
 (402) 330-0880



169-141  
 A169141A.DWG



CENTERS LINE CURVE DATA TABLE

CURVE DATA	ANGLE	CHORD	TANGENT	CHORD BEHA	ANGLE	CHORD	TANGENT	CHORD BEHA	ANGLE
C1	145.17	33.90	53.0	23.710*	505.35	317.45	110.00		
C2	152.50*	304.48	145.17	293.33*	595.37	312.41	160.00		
C3	159.83*	103.39	178.55	90.00	152.50*	297.17	50.00		
C4	167.16*	27.76	42.84	23.710*	875.81	297.17	50.00		
C5	174.49*	314.84	398.63	200.00	152.50*	207.48	240.71	120.00	
C6	181.82*	244.85	300.00	200.00	152.50*	170.70	233.36	150.00	
C7	189.15*	164.99	198.75	100.00	152.50*	133.68	398.55	210.00	
C8	196.48*	85.13	142.50	50.00	152.50*	87.34	307.34	150.00	

ENCUMBRANCES AND EFTY DEEDS ARE HEREBY ACKNOWLEDGED AND RELEASED BY THE CITY OF SARPY COUNTY, NEBRASKA RECORD FOR THE CITY, TRON  
 AND MAINTENANCE OF ELECTRIC TRANSMISSION LINE.

ENCUMBRANCES AND EFTY DEEDS ARE HEREBY ACKNOWLEDGED AND RELEASED BY THE CITY OF SARPY COUNTY, NEBRASKA RECORD FOR THE CITY, TRON  
 AND MAINTENANCE OF ELECTRIC TRANSMISSION LINE.

ENCUMBRANCES AND EFTY DEEDS ARE HEREBY ACKNOWLEDGED AND RELEASED BY THE CITY OF SARPY COUNTY, NEBRASKA RECORD FOR THE CITY, TRON  
 AND MAINTENANCE OF ELECTRIC TRANSMISSION LINE.