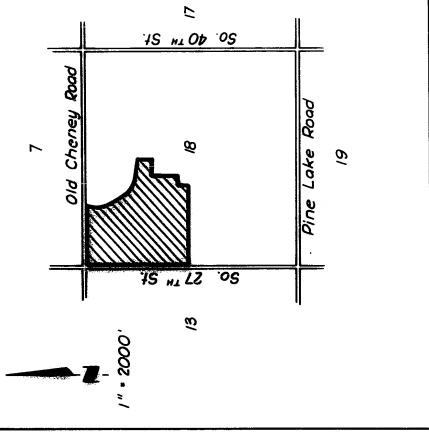


SEVENOAKS 1ST ADDITION



DEDICATION

The foregoing plat, Sevenoaks 1st Addition, as described in the surveyor's certificate is hereby dedicated to the public use and in accordance with the desires of the undersigned, R.J.S. Partnership, Robert J. Renfro & Jerry C. Joyce, sole owners. The easements shown thereon are hereby granted in perpetuity to the City of Lincoln, the Lincoln Telephone and Telegraph Company, and other utilities, their successors and assigns, to construct, operate, maintain, repair and replace storm sewers, water mains, sanitary sewers, conduits, buried cables, electric lines, utility poles, commercial antenna television facilities, and other public utilities. An easement is hereby granted to the City of Lincoln to allow the use of all private roadways in Block 11. The streets shown on the foregoing plat are hereby dedicated to the use of the public. All utility easements are 10.00 feet in width centered on the lot line unless otherwise shown. Outlot "b" is dedicated to the City of Lincoln. The owners and their successors and assigns relinquish the right of direct view from the Old Cheney Road and South 27th Street from those lots which abut said Old Cheney Road and South 27th Street.

In witness whereof we do hereunto set our hands this 3rd day of August, 1978.

R.J.S. Partnership

By: Robert J. Renfro
Robert J. Renfro, Partner

R.J.S. Partnership

By: Alfred Adams
State Security Savings Co., Partner
Alfred Adams, President

By: Robert J. Renfro and Frances J. Renfro
Robert J. Renfro and Frances J. Renfro, Husband and Wife

By: Jerry C. Joyce and Janet C. Joyce
Jerry C. Joyce and Janet C. Joyce, Husband and Wife

Owners of Block 11 and Lots 1 and 2, Block 11
Owners of Lots 3 & 37, Block 1

ACKNOWLEDGEMENT OF NOTARY

STATE OF NEBRASKA)
COUNTY OF LANCASTER)

On this 3rd day of August, 1978, before me, the undersigned, a notary public, personally came Robert J. Renfro, Jerry C. Joyce and Alfred Adams, President of State Security Savings Co., and they acknowledged the foregoing instrument as such officers of said companies, and they acknowledged the same to be their voluntary act and deed and the voluntary act and deed of said companies.



By: Thomas C. Brundel
Thomas C. Brundel, Notary Public

My commission expires the 6th day of November, 1978.

APPROVAL

The foregoing plat was approved by the Lincoln City-Lancaster County Planning Commission on this 19th day of July, 1978.

ATTEST: Robert C. Alvington
Chairman



ACCEPTANCE

The foregoing plat and dedication was approved and accepted by the Council of the City of Lincoln, Nebraska, by Ordinance No. 974 of October, 1978.

ATTEST: [Signature]
Notary Public

ACKNOWLEDGEMENT OF NOTARY

STATE OF NEBRASKA)
COUNTY OF LANCASTER)

On this 17th day of September, 1978, before me, the undersigned, a notary public, personally came Robert J. Renfro, Frances J. Renfro, Husband and Wife, and Jerry C. Joyce & Janet C. Joyce, Husband and Wife, to me personally known to be the identical persons whose names are affixed to the foregoing instrument, and they acknowledged the same to be their voluntary act and deed.

ATTEST: [Signature]
Notary Public

My commission expires the 17th day of September, 1979.

SEVENOAKS 1ST ADDITION

SURVEYOR'S CERTIFICATE

I hereby certify that I have accurately surveyed the subdivision known as Sevenoaks 1st Addition, and that permanent monuments have been placed at all corners of the plat boundary, on the center line at each street intersection and at each point of tangency and curvature. Temporary markers have been placed at all other corners and points of tangency and curvature. I will file a bond to insure the placing of metal stakes at each lot corner and at all other points prior to construction on or the conveyance of any lot shown on the final plat. All dimensions are chord measurements unless otherwise shown and are in feet and decimals of a foot.

Said Sevenoaks 1st Addition being a platting of part of the NW 1/4 of Section 18, and also a replat of outlet "A", & Outlet "B", in Sevenoaks subdivision located in said NW 1/4 of Section 18, all in Township 9, North, Range 7 East of the 6th P.M., Lancaster County, Nebraska, more particularly described as follows:

Commencing at the Southeast corner of said NW 1/4 of Section 18; thence S89°45'57"W (assumed bearing) along the South line of said NW 1/4 of Section 18, a distance of 660.00 feet to the Point of Beginning; thence continuing S89°45'57"W, along said South line of the NW 1/4 of Section 18, a distance of 1,962.47 feet to a point on the East right-of-way line of South 27th Street; thence N40°00'00"E, along said East right-of-way line of South 27th Street, a distance of 606.34 feet to the Southeast corner of said Old Cheney Road; thence, along said South right-of-way line of Old Cheney Road, on the following described courses; thence N89°59'58"W, a distance of 1,160.67 feet; thence S00°00'02"E, a distance of 17.00 feet; thence N89°59'58"W, a distance of 321.74 feet to the Northeast corner of said Outlet "A", Sevenoaks; thence, on the following described courses; thence S08°20'10"W, a distance of 329.75 feet; thence S75°15'57"W, a distance of 104.32 feet; thence S24°13'12"E, a distance of 298.40 feet to a point on the North right-of-way line of Dickens Street; thence S75°46'48"W, a distance of 81.23 feet; thence S24°13'12"E, along the East right-of-way line of said Outlet "A", a distance of 60.93 feet to a point on the South right-of-way line of Dickens Street; thence, along said South right-of-way line of Dickens Street, a distance of 81.23 feet to a point on the North right-of-way line of said Outlet "B", in Sevenoaks; thence along said Northerly line of Outlet "B", in Sevenoaks on the following described courses; thence S24°13'12"E, a distance of 302.62 feet; thence Southwesterly, on a curve to the left with a radius of 395.00 feet, a distance of 294.03 feet; thence S78°27'17"W, with a radius of 346.78 feet, a distance of 55.78 feet; thence S17°58'W, a distance of 347.73 feet to a point on the East line of said NW 1/4 of Section 18, said point also being the Southeast corner of Lot 16, Block 3, Sevenoaks; thence S00°27'17"W, along said East line of the NW 1/4 of Section 18, a distance of 237.96 feet; thence N85°46'47"W, a distance of 301.21 feet; thence S18°00'00"E, a distance of 42.45 feet; thence S04°32'55"W, a distance of 35.18 feet; thence S04°32'55"W, a distance of 80.00 feet; thence S00°14'08"E, a distance of 154.95 feet; thence S89°45'52"W, a distance of 275.05 feet; thence S00°14'08"E, a distance of 180.00 feet; thence S89°45'52"W, a distance of 31.29 feet; thence S00°14'08"E, a distance of 125.00 feet to the Point of Beginning.

Said tract of land contains an area of 64,030 acres, more or less.

Date 8-3-78

L.S.I. 205

Don W. Elliott

ELLIOTT & ASSOCIATES
8801 West Center Road
Omaha, Nebraska 68124



SE Cor. Of NW 1/4
Of Sec. 18-9-7

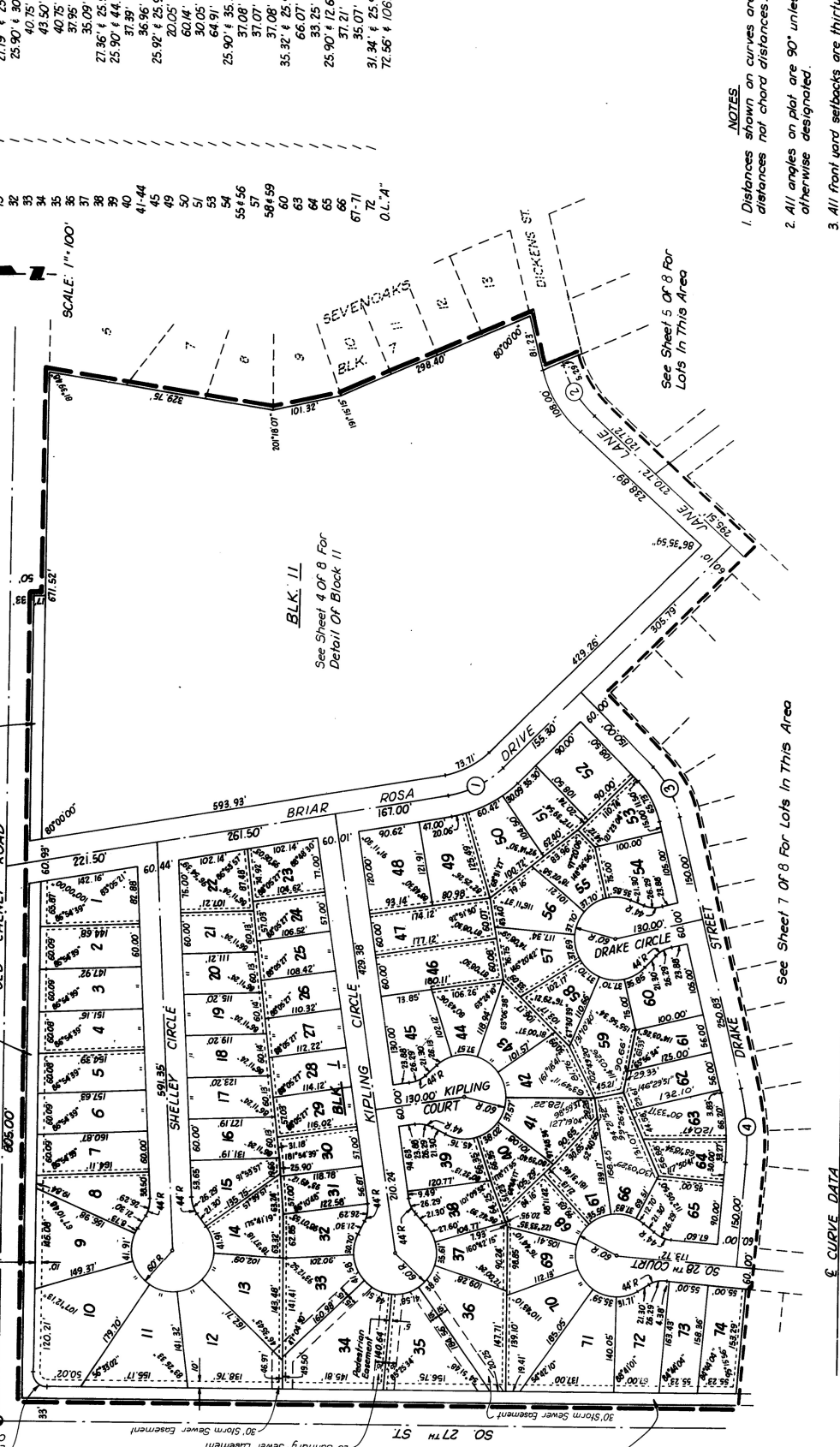
Point of Beginning

SEVENOAKS 1ST ADDITION

NW Cor. Of
Sec. 18-9-7
A - 90' x 37'
R - 20.00'
T - 20.24'
C - 28.45'

LOT	BLOCK	CHORD DIMENSION
6		25.90' & 8.72'
9-14		41.06'
15		21.19' & 25.90'
32		25.90' & 30.37'
33		40.75'
34		43.50'
35		37.95'
36		35.09'
37		35.09'
38		27.36' & 25.90'
39		25.90' & 44.66'
40		37.39'
41-44		36.96'
45		25.92' & 25.90'
49		20.05'
50		60.14'
51		30.05'
53		64.91'
54		25.90' & 35.32'
55 & 56		37.08'
57		37.07'
58 & 59		37.08'
60		31.08'
63		35.32' & 25.90'
64		66.07'
65		33.25'
66		25.90' & 12.68'
67-71		37.21'
72		35.07'
0.L.A.		72.56' & 106.39'

SCALE: 1" = 100'



- NOTES**
- Distances shown on curves are arc distances not chord distances.
 - All angles on plot are 90° unless otherwise designated.
 - All front yard setbacks are thirty (30) feet and all corner lots have front yard setbacks on each street side. Except the lots in Blocks 1, 2, 3 & 10 which have setbacks of twenty five (25) feet.

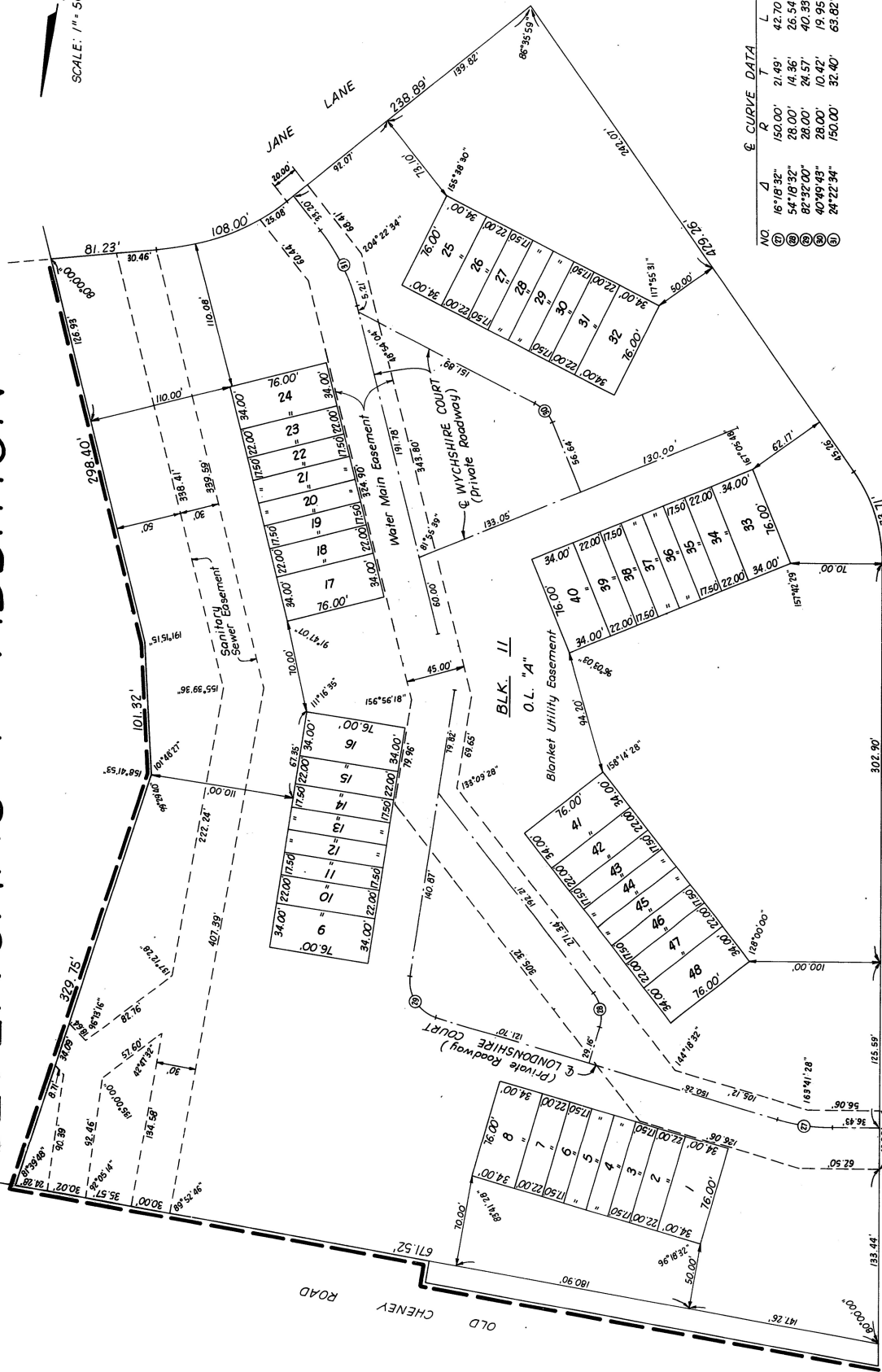
Sheet 3 of 8

ε CURVE DATA

NO.	A	R	T	L	D
1	35° 11' 45"	150.00'	47.58'	92.14'	38.19720'
2	54° 22' 34"	150.00'	46.40'	90.00'	38.19720'
3	31° 23' 04"	150.00'	42.14'	82.16'	38.19720'
4	18° 23' 50"	359.76'	55.03'	109.11'	16.06361'

SEVENOAKS 1ST ADDITION

SCALE: 1" = 50'



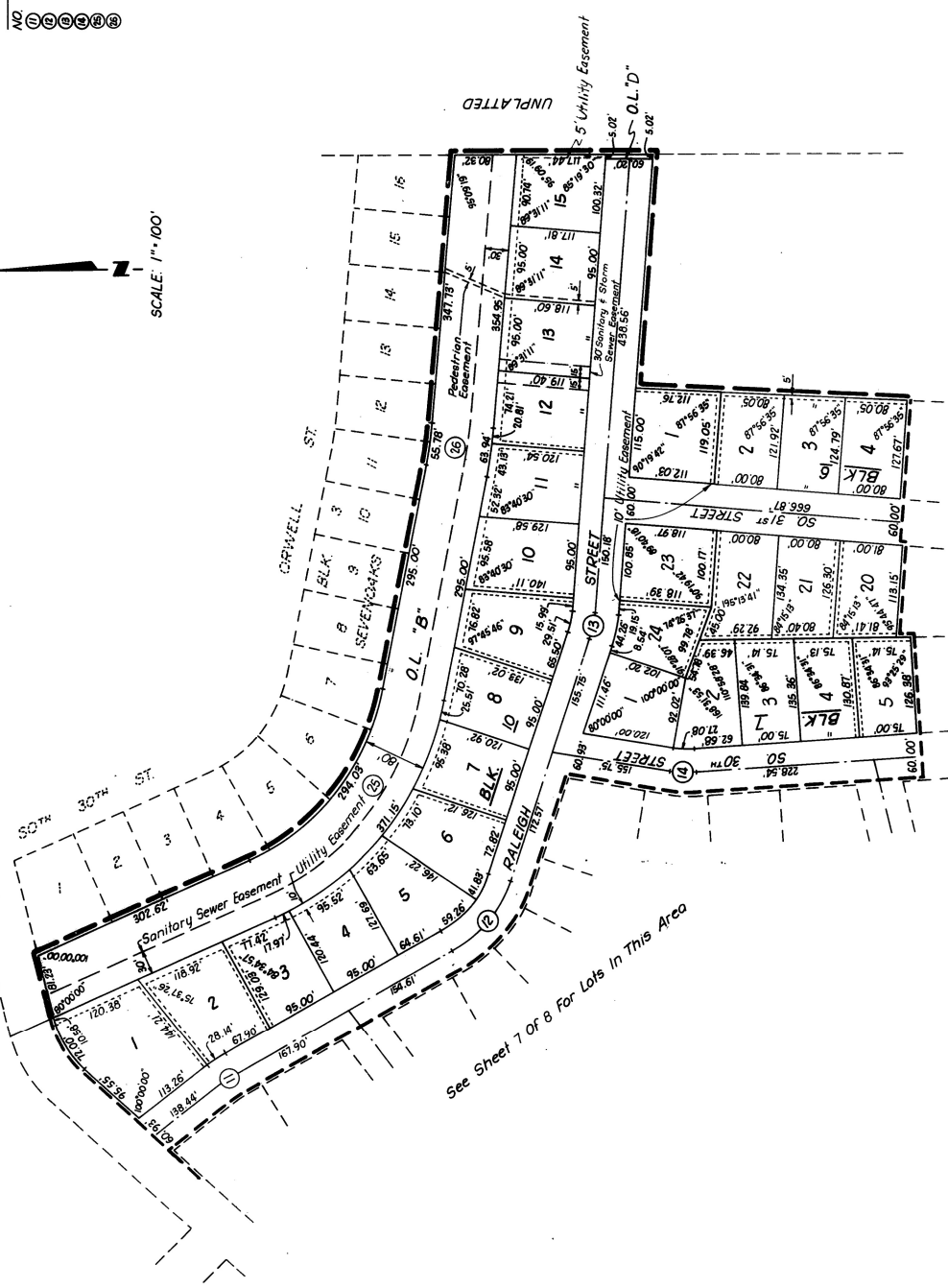
EQ CURVE DATA

NO.	R	T	L	D
①	16°18'32"	150.00'	21.49'	58.19720°
②	54°18'32"	28.00'	14.36'	26.54°
③	82°32'00"	28.00'	40.33'	204.62785°
④	40°19'43"	28.00'	19.95'	204.62785°
⑤	24°22'34"	150.00'	32.40'	58.19720°

SEVENOAKS 1ST ADDITION

NO	C CURVE DATA				D
	Δ	R	T	L	
①	08°57'31"	150.00'	11.75'	23.45'	36.19720°
②	42°03'16"	167.72'	64.47'	123.10'	34.16158°
③	14°05'16"	150.00'	16.53'	36.88'	36.19720°
④	12°55'50"	150.00'	17.00'	33.85'	36.19720°
⑤	55°14'05"	345.00'	180.49'	332.59'	16.60748°
⑥	05°50'41"	586.78'	29.95'	59.86'	9.76444°

LOT	BLOCK	CHORD DIMENSION	
		FRONT	REAR
24	7	44.15'	---
2	7	21.02'	---
1	10	70.92'	---
2	10	28.11'	---
3	10	---	17.97'
4	10	---	95.28'
5	10	58.80'	63.58'
6	10	41.67'	72.99'
7	10	---	95.14'
8	10	29.44'	25.51'
9	10	---	43.12'
10	10	---	20.81'



- NOTES**
- Distances shown on curves are arc distances not chord distances.
 - All angles on plat are 90° unless otherwise designated.
 - All front and setbacks are thirty (30') feet and all corner lots have front yard setbacks on each street side. Except the lots in Blocks 1, 2, 3 & 10 which have setbacks of twenty five (25') feet.

See Sheet 6 of 8 For Lots In This Area

See Sheet 7 of 8 For Lots In This Area

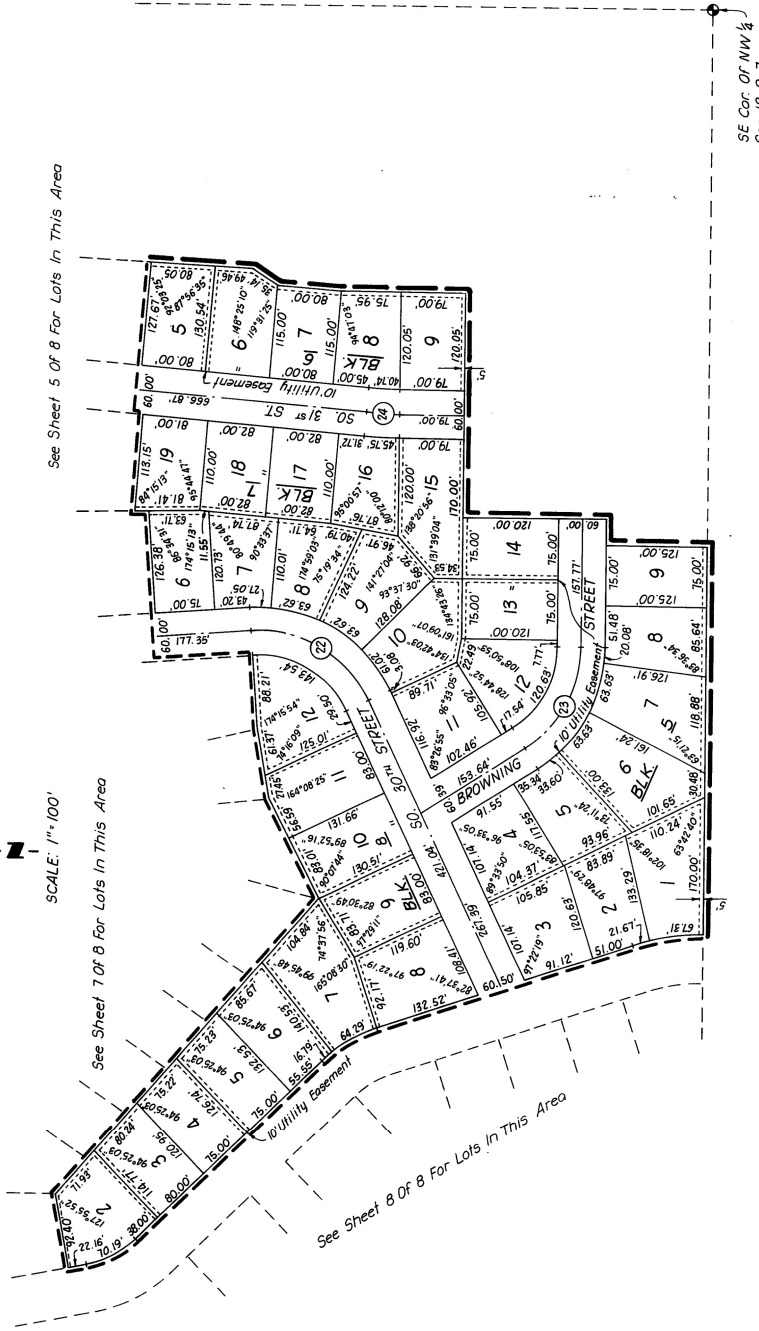
SEVENOAKS 1ST ADDITION

NO	Δ	R	T	L	D
①	68°32'03"	150.00'	102.20'	179.42'	38.19720'
②	57°35'45"	150.00'	82.45'	150.79'	38.19720'
③	04°47'03"	517.91'	21.64'	43.25'	11.06289'

LOT	BLOCK	CHORD DIMENSION
1	5	67.16'
2	5	21.66'
3	5	33.55'
4	5	63.30'
5	5	63.30'
6	5	20.07'
7	6	40.73'
8	7	27.02'
9	7	63.29'
10	7	63.29'
11	7	60.73'
12	7	115.61'
13	2	45.74'
14	2	69.19'
15	6	16.78'
16	7	63.95'
17	8	135.13'

NOTES

- Distances shown on curves are arc distances not chord distances.
- All angles on plat are 90° unless otherwise designated.
- All front yard setbacks are thirty (30') feet and all corner lots have front yard setbacks on each street side. Except the lots in Blocks 1, 2, 3 & 10 which have setbacks of twenty five (25') feet.

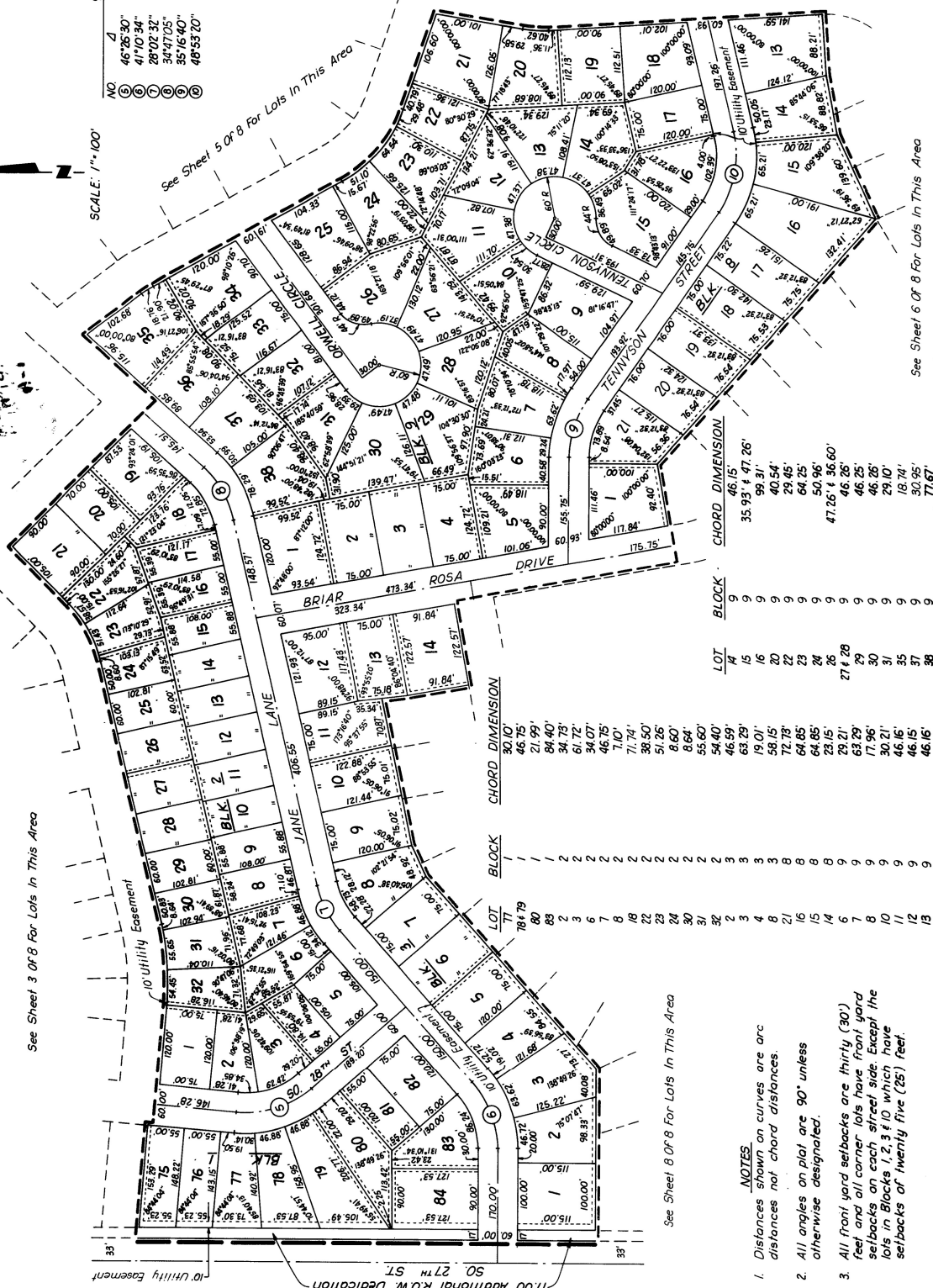


SEVENOAKS 1ST ADDITION

SCALE: 1"=100'

See Sheet 5 of 8 For Lots In This Area

NO.	Δ	R	L	D
①	46°26'30"	150.00'	64.35'	121.58'
②	41°10'34"	150.00'	56.35'	107.80'
③	28°02'32"	150.00'	37.46'	73.41'
④	34°47'05"	150.00'	46.99'	91.07'
⑤	35°16'40"	150.00'	47.69'	92.36'
⑥	48°53'20"	150.00'	68.18'	127.99'



See Sheet 3 of 8 For Lots In This Area

See Sheet 6 of 8 For Lots In This Area

See Sheet 8 of 8 For Lots In This Area

NOTES:

- Distances shown on curves are arc distances not chord distances.
- All angles on plot are 90° unless otherwise designated.
- All front yard setbacks are thirty (30) feet and all corner lots have front yard setbacks on each street side. Except the lots in Blocks 1, 2, 3 & 10 which have setbacks of twenty five (25) feet.

LOT	CHORD DIMENSION
1	115.00'
2	100.00'
3	100.00'
4	100.00'
5	100.00'
6	100.00'
7	100.00'
8	100.00'
9	100.00'
10	100.00'
11	100.00'
12	100.00'
13	100.00'
14	100.00'
15	100.00'
16	100.00'
17	100.00'
18	100.00'
19	100.00'
20	100.00'
21	100.00'
22	100.00'
23	100.00'
24	100.00'
25	100.00'
26	100.00'
27	100.00'
28	100.00'
29	100.00'
30	100.00'
31	100.00'
32	100.00'
33	100.00'
34	100.00'
35	100.00'
36	100.00'
37	100.00'
38	100.00'

SEVENOAKS 1ST ADDITION

RECORDED
MICROFILMED
#1928

INSTR. NO. 78-28476
 RECORDED
 1970 OCT 27 PM 11:37
 PLAT NO. 78-28476

E. CURVE DATA			
NO	A	R	D
17	18°28'51"	245.87'	40.00'
18	25°48'31"	150.00'	34.37'
19	70°46'54"	150.00'	106.24'
20	38°30'48"	160.00'	45.16'
21	30°30'32"	160.00'	41.36'
22	21°02'09"	300.00'	55.70'
23	27°47'11"	150.00'	37.10'
24			
25			
26			
27			
28			
29			
30			
31			
32			
33			
34			
35			
36			
37			
38			
39			
40			
41			
42			
43			
44			
45			
46			
47			
48			
49			
50			
51			
52			
53			
54			
55			
56			
57			
58			
59			
60			
61			
62			
63			
64			
65			
66			
67			
68			
69			
70			
71			
72			
73			
74			
75			
76			
77			
78			
79			
80			
81			
82			
83			
84			
85			
86			
87			
88			
89			
90			
91			
92			
93			
94			
95			
96			
97			
98			
99			
100			

LOT	BLOCK	CHORD DIMENSION
17	3	46.35'
18	3	50.28'
19	3	34.43'
20	3	68.38'
21	3	18.21'
22	3	25.90' & 35.32'
23	3	46.15'
24	3	46.15'
25	3	46.15'
26	3	46.15'
27	3	46.15'
28	3	46.15'
29	3	46.15'
30	3	46.15'
31	3	46.15'
32	3	46.15'
33	3	46.15'
34	3	46.15'
35	3	46.15'
36	3	46.15'
37	3	46.15'
38	3	46.15'
39	3	46.15'
40	3	46.15'
41	3	46.15'
42	3	46.15'
43	3	46.15'
44	3	46.15'
45	3	46.15'
46	3	46.15'
47	3	46.15'
48	3	46.15'
49	3	46.15'
50	3	46.15'
51	3	46.15'
52	3	46.15'
53	3	46.15'
54	3	46.15'
55	3	46.15'
56	3	46.15'
57	3	46.15'
58	3	46.15'
59	3	46.15'
60	3	46.15'
61	3	46.15'
62	3	46.15'
63	3	46.15'
64	3	46.15'
65	3	46.15'
66	3	46.15'
67	3	46.15'
68	3	46.15'
69	3	46.15'
70	3	46.15'
71	3	46.15'
72	3	46.15'
73	3	46.15'
74	3	46.15'
75	3	46.15'
76	3	46.15'
77	3	46.15'
78	3	46.15'
79	3	46.15'
80	3	46.15'
81	3	46.15'
82	3	46.15'
83	3	46.15'
84	3	46.15'
85	3	46.15'
86	3	46.15'
87	3	46.15'
88	3	46.15'
89	3	46.15'
90	3	46.15'
91	3	46.15'
92	3	46.15'
93	3	46.15'
94	3	46.15'
95	3	46.15'
96	3	46.15'
97	3	46.15'
98	3	46.15'
99	3	46.15'
100	3	46.15'

- NOTES.**
- Distances shown on curves are arc distances not chord distances.
 - All angles on plat are 90° unless otherwise designated.
 - All front yard setbacks are thirty (30') feet and all corner lots have front yard setbacks on each street side. Except the lots in Blocks 1, 2 & 3 which have setbacks of twenty five (25') feet.

