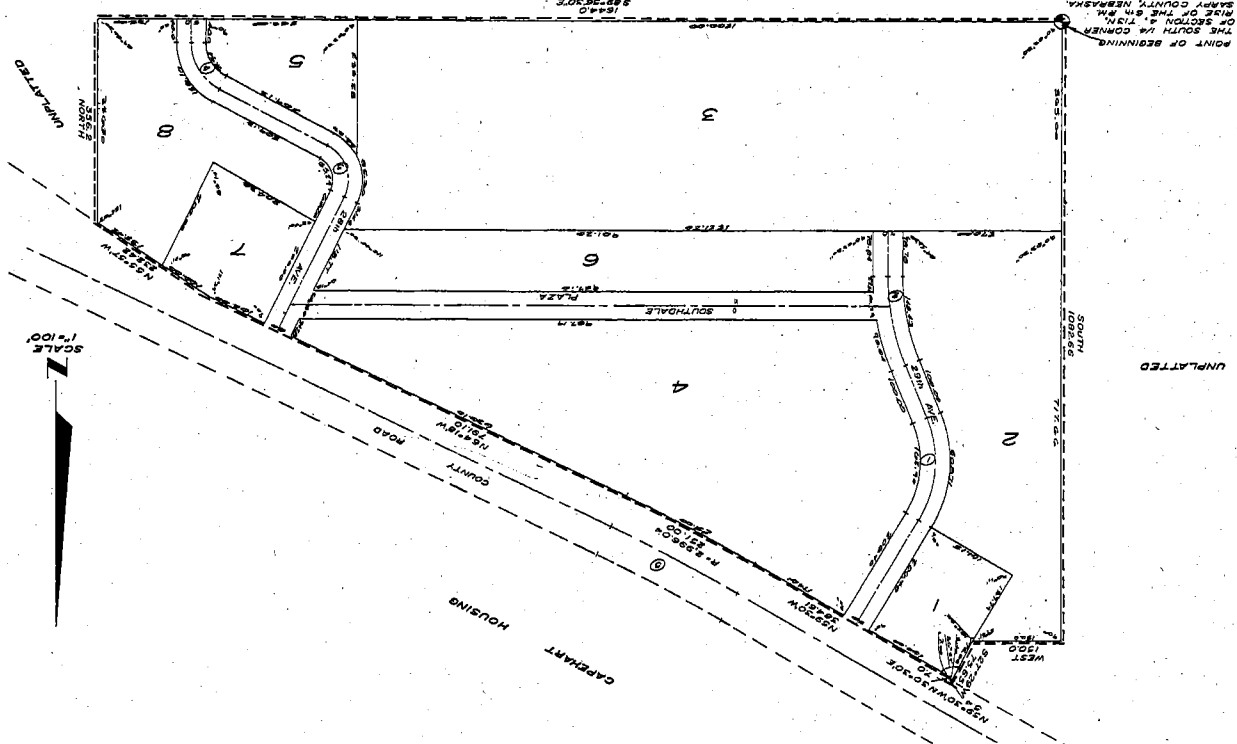




①	②	③	④	⑤	⑥	⑦	⑧	⑨	⑩	⑪	⑫	⑬	⑭	⑮	⑯	⑰	⑱	⑲	⑳
6.02378	6.02378	6.02378	6.02378	6.02378	6.02378	6.02378	6.02378	6.02378	6.02378	6.02378	6.02378	6.02378	6.02378	6.02378	6.02378	6.02378	6.02378	6.02378	6.02378

NOTE: DISTANCES SHOWN ON CHORD DISTANCES. UNPLATTED



**SOUTHDALE**  
 BEING A PLATTING OF PART OF  
 LOTS 1 THRU 8 INCLUSIVE  
 OF SECTION 4, T13N, R10W,  
 THE 6TH PM, SARY COUNTY, NEBRASKA.

I HEREBY CERTIFY THAT I HAVE ACCURATELY SURVEYED AND EXTENDED THE BOUNDARIES OF SAID LOTS AND SECTIONS AND HAVE CAUSED THE PLAT TO BE PREPARED IN ACCORDANCE WITH THE ACTS OF CONGRESS AND THE STATUTES OF NEBRASKA RELATIVE TO THE PLATTING OF LANDS AND TO THE RECORDING OF SAID PLATS AND TO THE RECORDING OF DEEDS AND RECORDS IN SARY COUNTY NEBR. ...

My commission expires this 19th day of December 1957.

Witness my hand and official seal, in Lincoln, Nebraska, this 28th day of October 1957.

STATE OF NEBRASKA  
 COUNTY OF SARY

NOTARY PUBLIC  
 My commission expires this 15th day of October 1957.

STATE OF NEBRASKA  
 COUNTY OF SARY

ADJUDGMENTS OF NOTARY  
 My commission expires this 15th day of October 1957.

STATE OF NEBRASKA  
 COUNTY OF SARY