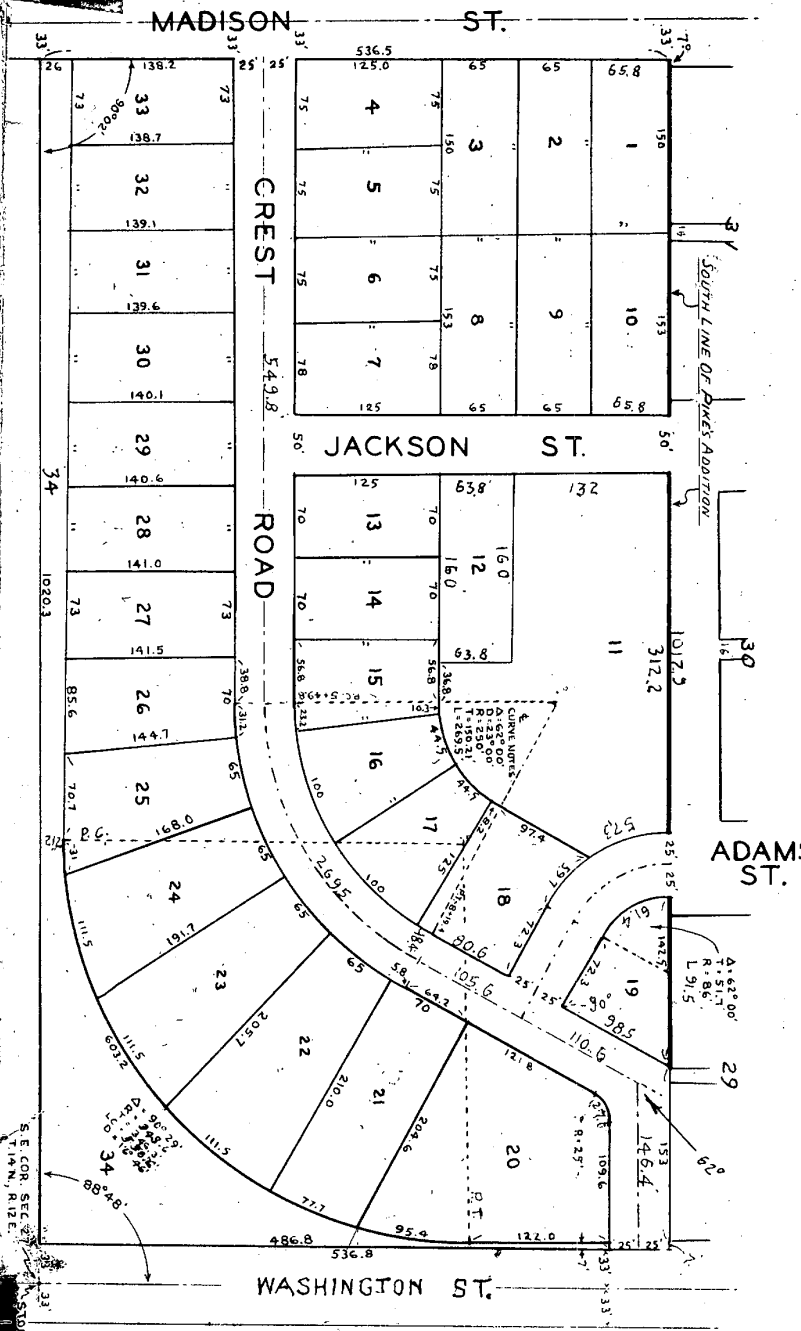


CLARA M. SPETHMAN ET AL :

TO  
THE PUBLIC  
Plat \$1.85 Pd.

Filed December 17, 1947 at 2 o'clock P.M.

*Boone Water*  
County Clerk



**SOUTH CREST**  
 A SUBDIVISION IN THE S.E. 1/4 OF THE S.E. 1/4  
 OF SECTION 27, T. 14 N., R. 12 E. OF THE 6TH P.M.

**SURVEYOR'S NOTE:** The heavy line on the North boundary of South Crest shows a surplus of 1.77 feet which is included in the boundary description of South Crest, but no part of this surplus is included in the widths of lots 1, 10, 11 and 19 of South Crest.

E. M. Rohrbough

COUNTY TREASURER'S CERTIFICATE

I hereby certify that the records of my office show no taxes due or delinquent upon the property described in the surveyor's certificate on this plat as of December 2 1947.

Robert M. Eby  
County Treasurer