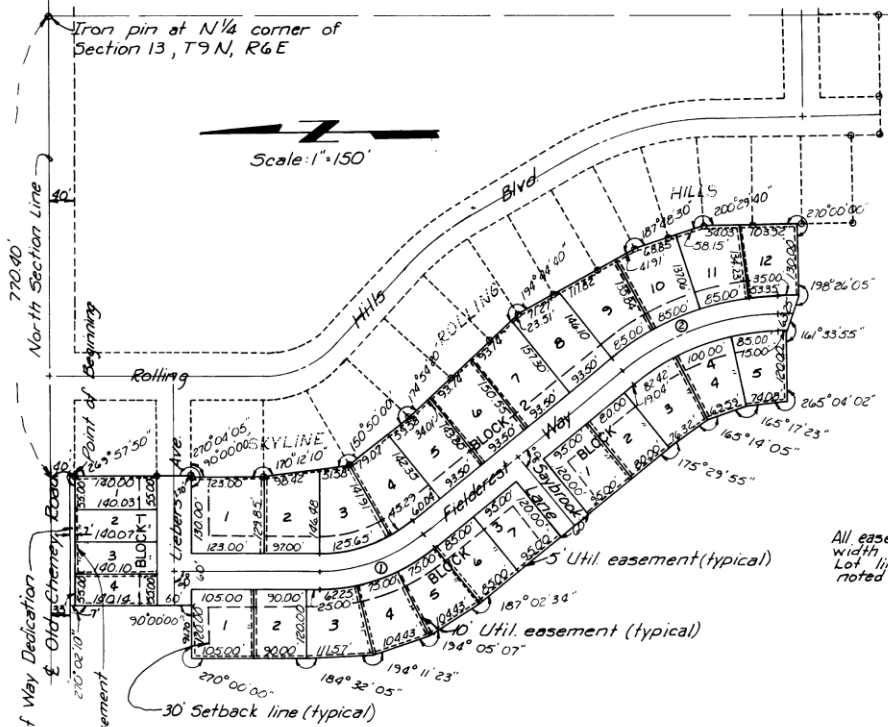


# SKYLINE ROLLING HILLS FIRST ADDITION



Curve Data  
 OΔ = 39°51'10"  
 T = 100.00'  
 R = 275.85'  
 D = 20770629'  
 Lc = 191.87'  
 OΔ = 38°54'35"  
 T = 150.00'  
 R = 424.65'  
 D = 13492471'  
 Lc = 288.38'

All easements are 10' in width centered on the Lot line unless otherwise noted

### DEDICATION

The foregoing plat Skyline Rolling Hills First Addition a subdivision of a portion of Lot 24 in the NW quarter of section 13, T9N, R6E of the 6th Principal Meridian, Lancaster County, Nebraska, more particularly described as follows, commencing at the N 1/4 corner of said section 13, thence N89°06'30"W along the North line of said section 13 a distance of 770.40 feet, thence 50°51'20"W a distance of 33.00 feet to the point of beginning, said point being the NE corner of Lot 24 of section 13, T9N, R6E, thence 50°51'20"W a distance of 207.00 feet, thence N89°04'35"W a distance of 170 feet, thence 50°55'25"W a distance of 123.00 feet, thence 58°52'25"E a distance of 150.00 feet, thence 53°02'25"E a distance of 138.65 feet, thence 54°08'05"E a distance of 245.00 feet, thence 52°23'25"E a distance of 225.00 feet, thence 52°34'55"E a distance of 127.00 feet, thence 50°05'15"E a distance of 157.95 feet, thence 58°54'45"W a distance of 130.00 feet, thence N71°39'10"W a distance of 63.25 feet, thence 58°54'45"W a distance of 120.00 feet, thence N5°01'13"W a distance of 740.8 feet, thence N19°43'50"W a distance of 69.59 feet, thence N34°29'45"W a distance of 76.32 feet, thence N38°59'50"W a distance of 415.00 feet, thence N31°57'16"W a distance of 104.43 feet, thence N17°52'09"W a distance of 104.43 feet, thence N3°40'45"W a distance of 111.57 feet, thence N0°51'20"E a distance of 195.00 feet, thence 58°9'08'40"E a distance of 91.70 feet, thence N0°51'20"E a distance of 207.14 feet, thence 58°9'06'30"E a distance of 220.00 feet to the point of beginning, said tract contains 9.581 acres. This Dedication is made with the free consent and in accordance with the desire of the undersigned owner and proprietor and the easements shown thereon are hereby granted in perpetuity to the City of Lincoln, Nebraska, the Lincoln Telephone and Telegraph Co and other public utilities, their successors and assigns to construct, operate, maintain, repair and replace storm sewers, sanitary sewers, water mains, conduits, buried cables, wires, poles and all appurtenances thereto, over, upon or under the easements as shown on the foregoing Plat, the streets shown thereon are hereby dedicated to the use of the Public.

Witness our hands this 27<sup>th</sup> Day of SEPT 1973

F. Pace Woods II  
 F. Pace Woods II - Owner

### ACKNOWLEDGEMENT OF NOTARY

State of Nebraska  
 Lancaster County

On this 27<sup>th</sup> day of September, A.D., 1973, before me, a Notary Public duly commissioned, qualified for and residing in said County and State, personally came F. Pace Woods II, owner, who is personally known to me to be the identical person whose name is affixed to the Dedication of this Plat and he acknowledged the execution thereof to be his voluntary act and deed as said owner.

Rose A. Rosenstock  
 Notary Public  
 STATE OF NEBRASKA  
 COMMISSION EXPIRES  
 AUGUST 16, 1975

My Commission expires on the 16<sup>th</sup> Day of August, A.D., 1975.

### ACCEPTANCE

The foregoing Plat and dedication was approved and accepted by the City Council of the City of Lincoln, Nebraska by Ordinance 1973 passed the 3<sup>rd</sup> Day of December, 1973.

W. J. Springer  
 City Clerk

### APPROVAL

The foregoing Plat was approved by the Lincoln City Lancaster County Planning Commission on this 24<sup>th</sup> Day of OCT, 1973.

J. E. Olsson  
 Attest  
 Chairman

JOHN E. OLSSON & ASSOCIATES  
 CONSULTING ENGINEERS  
 LINCOLN, NEBRASKA  
 DWG. NO. 2293 SHEET 1 OF 1

### SURVEYORS CERTIFICATE

I hereby certify that I have accurately surveyed the boundary of the subdivision described herein and that iron pipe monuments have been placed at all boundary corners, street intersections, block corners and centerline points of tangency. The Subdivider (Owner) will furnish to the City of Lincoln a staking bond to insure the placing of iron pipe at all lot corners within the subdivision to be known as Skyline Rolling Hills First Addition. All dimensions are chord measurements unless otherwise shown and are in feet and decimals of a foot.

28 Sept 1973  
 Date

Carl W. Bodensteiner  
 Carl W. Bodensteiner - 248  
 NEBRASKA REGISTERED LAND SURVEYOR

L-5-248  
 Land Surveyors Number

INDEXED 8-185  
 STRONG - PEAR GENERAL #1755

LANCASTER COUNTY NEBRASKA  
 Kenneth L. Ferguson  
 REGISTER OF DEEDS

1973 DEC 18 AM 11:07

ENTERED ON NUMERICAL INDEX FILED FOR RECORD AS: #9 75

INST. NO. 73- 23706