

# SCHLOTT MIDDLE

LOTS 1 THRU 4 INCL.

COMPARED  
7020

BEING A PLATTING OF PART OF THE SECTION 24, T75N, R44W, OF THE 5 COUNTY, IOWA

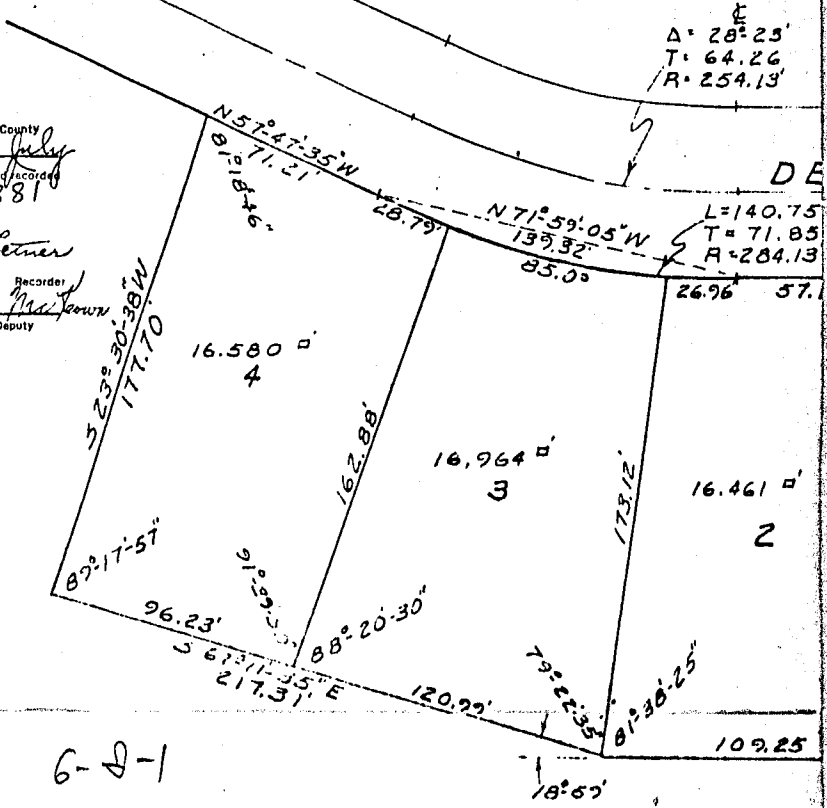
*Fee 8.50*

$\Delta = 28^{\circ} 25'$   
 $T = 64.26$   
 $R = 254.13$

STATE OF IOWA, Puttawattamie County  
Filed for record the 24<sup>th</sup> day of July  
1974 at 3:30 o'clock P.M. and recorded  
in book 74 page 11881

*Dorothy Lerner*

Recorder  
By *Gerald B. Rager, Jr.*  
Deputy



6-8-1

**Legal Description**  
That part of the NW 1/4 of Section 24, T75N, R44W of the 5th P.M., Puttawattamie County, Iowa, more particularly described as follows:  
(East line of said NW 1/4 assumed North-South in direction.)  
Commencing at a point on the East line of said NW 1/4 and on the South R.O.W line of DeLoon Avenue; thence Westerly along said South R.O.W. line for 18.76 feet as measured along the arc of a curve to the left having a radius of 363.79 feet; thence N 65° 10' 35" W along said South R.O.W. line for 1.24 feet to the true point of beginning; thence continuing along said South R.O.W. line of DeLoon Avenue, N 86° 10' 35" W for 237.16 feet; thence continuing along said South R.O.W. along a curve to the right having a radius of 366.1 feet and long chord bearing N 71° 59' 05" W for 139.32 feet; for a true distance of 140.75 feet; thence continuing along said South R.O.W. line N 57° 47' 35" W for 71.21 feet; thence S 23° 30' 38" W for 177.70 feet; thence S 67° 11' 35" E for 217.31 feet; thence S 36° 10' 35" E for 289.25 feet; thence N 03° 49' 25" E for 170.0 feet to the point of beginning.

I hereby certify that this plat, map, survey or report was made by me or under my direct supervision and that I am a duly Registered Land Surveyor under the laws of the State of Iowa.

*Gerald B. Rager, Jr.* 2-12-74  
Gerald B. Rager, Jr., Reg. L.S., No. 5491



COMPARED  
74 11881

# E ADDITION INCLUSIVE.

OF THE NORTHWEST 1/4 OF  
THE 5<sup>TH</sup> P.M., POTTAWATTAMIE

NORTH 1/4 CORNER  
SECTION 24,  
T75N, R44W

ASSUMED NORTH-SOUTH

8<sup>2</sup>.23'  
4.26  
54.13'

DE LONG AVE.

140.75'  
71.85'  
284.13'

POINT OF BEGINNING  
237.16'  
N86°10'35"W

57.16'

180.0'

1.24'

18.76'

Δ = 36°34'  
T = 136.71  
R = 413.79

461' □  
2

170.0'

30.600' □  
1

352.64± E N  
170.38'

09.25'

90°

180.0'

90°

S86°10'35" E  
289.25'

93°49'25"

CENTER OF S  
T75N, R44W

COMPARED

74 11882

SCALE 1" = 50'

TO WHOM IT MAY CONCERN:

On this 24<sup>TH</sup> day of July, 1974, the undersigned, Elmer F. Westphal

Clarks, Iowa, hereby certifies that

office of the City Clerk of the City

approved as the final plat of

NER

DRAWN BY  
M.V.B.

BOOK 68-12  
PAGE 56-57

OF SECTION 24,  
4W

COMPARED  
74 11883

TENTATIVE PLAT  
SCHLOTT MIDDLE ADDITION  
LOTS 1 THRU 4 INCLUSIVE

10111 1/4 11th DOUCE STREET  
MINNEAPOLIS, MINN. 55412  
TELEPHONE 427 3381-0033

ARSON & ASSOCIATES, INC.  
SURVEYORS

F the  
o that  
same  
n  
s,  
E

SCALE 1"=50'

TO WHOM IT MAY CONCERN:

On this 24<sup>TH</sup> day of July, 1974, the undersigned Elmer F. Westphal, City Clerk of the City of Council Bluffs, Iowa, hereby certifies that the above plat is identical to that on file in the office of the City Clerk of the City of Council Bluffs, Iowa; that same was accepted and approved as the final plat of said Addition by Council Resolution adopted and approved July 15, 1974 by the City Council of the City of Council Bluffs, Iowa; further that wherever the name "SCHLOTT'S MIDDLE ADDITION" and "SCHLOTT MIDDLE ADDITION" appear, said names are synonymous and one and the same Addition.



Elmer F. Westphal, City Clerk, of the  
City of Council Bluffs, Iowa

*Elmer F. Westphal*

SCH

LAMP RYNEA  
74 11884

REVISIONS  
2-11-74

JOB NUMBER  
M-74-154  
DATE  
2-6-74