

# ORDINANCE RECORD

FILED SARPY CO., NE  
BOOK 55 OF RECORDS  
PAGE 416

1992 JUN 21 PM 3:36

*Carl W. Hildebrand*  
REGISTER OF DEEDS

ORDINANCE NO. 890

AN ORDINANCE TO ANNEX CERTAIN REAL ESTATE TO THE CITY OF PAPIILLION, NEBRASKA

WHEREAS, the City of Papillion has received the recommendation of the Papillion Planning Commission concerning a proposal to annex certain real estate to the City of Papillion, Nebraska, and

BE IT ORDAINED BY THE MAYOR AND CITY COUNCIL OF THE CITY OF PAPIILLION, NEBRASKA

Section 1. The real estate legally described as follows, to-wit:

That part of the NW 1/4 of the NW 1/4 of Section 23, T14N, R12E of the 6th P.M., Sarpy County, Nebraska described as follows: commencing at the NE corner of the NW 1/4 of said NW 1/4; thence S 00°02'41" E (assumed bearing) on the East line of said NW 1/4 of the NW 1/4, 33.00 feet to the point of beginning; thence continuing S 00°02'41" E on the East line of the NW 1/4 of said NW 1/4, 1,289.60 feet to the SE corner of the NW 1/4 of said NW 1/4; thence N 89°56'35" W on the South line of said NW 1/4 of the NW 1/4, 1,270.58 feet to a point 54.90 feet easterly from the SW corner of the NW 1/4 of said NW 1/4, said point being on the Easterly R.O.W. line of State highway No. 85; thence N 00°13'47" W on said Easterly R.O.W. line, 1,062.53 feet to a point 50.42 feet Easterly from the West line of the NW 1/4 of said NW 1/4 and 261.00 feet Southerly from the North line of said NW 1/4 of the NW 1/4; thence S 89°54'06" East on a line 261.00 feet Southerly from and parallel to the North line of the NW 1/4 of said NW 1/4, 884.53 feet; thence N 00°00'24" E, 228.00 feet to a point 33.00 feet Southerly from the North line of the NW 1/4 of said NW 1/4; thence S 89°54'06" E on a line 33.00 feet Southerly from and parallel to the North line of the NW 1/4 of said NW 1/4, 389.28 feet to the point of beginning. (Said tract contains 33.06 Acres).

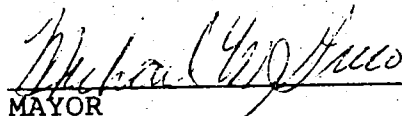
# ORDINANCE RECORD

be and the same is hereby annexed to and included within the boundaries and territory of the City of Papillion, Nebraska, not again annexing any part thereof heretofore annexed, and the corporate limits of said City are hereby extended accordingly; and said lands and the persons residing thereon shall hereafter be subject to all the rules, regulations, ordinances, taxes and other burdens and benefits of the other persons or property included within the City of Papillion, Nebraska.

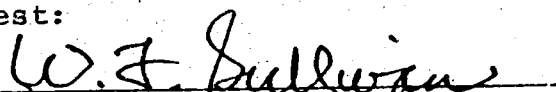
Section 2. Effective Date. This ordinance shall be in full force and effect thirty (30) days after it has been published at least one (1) week in a newspaper published within the City of Papillion. The Clerk is directed to effectuate the publishing of this ordinance within fifteen (15) days of the date of its passage and approval by the City Council.

PASSED AND APPROVED this 15th day of June, 1982.

CITY OF PAPIILLION, NEBRASKA

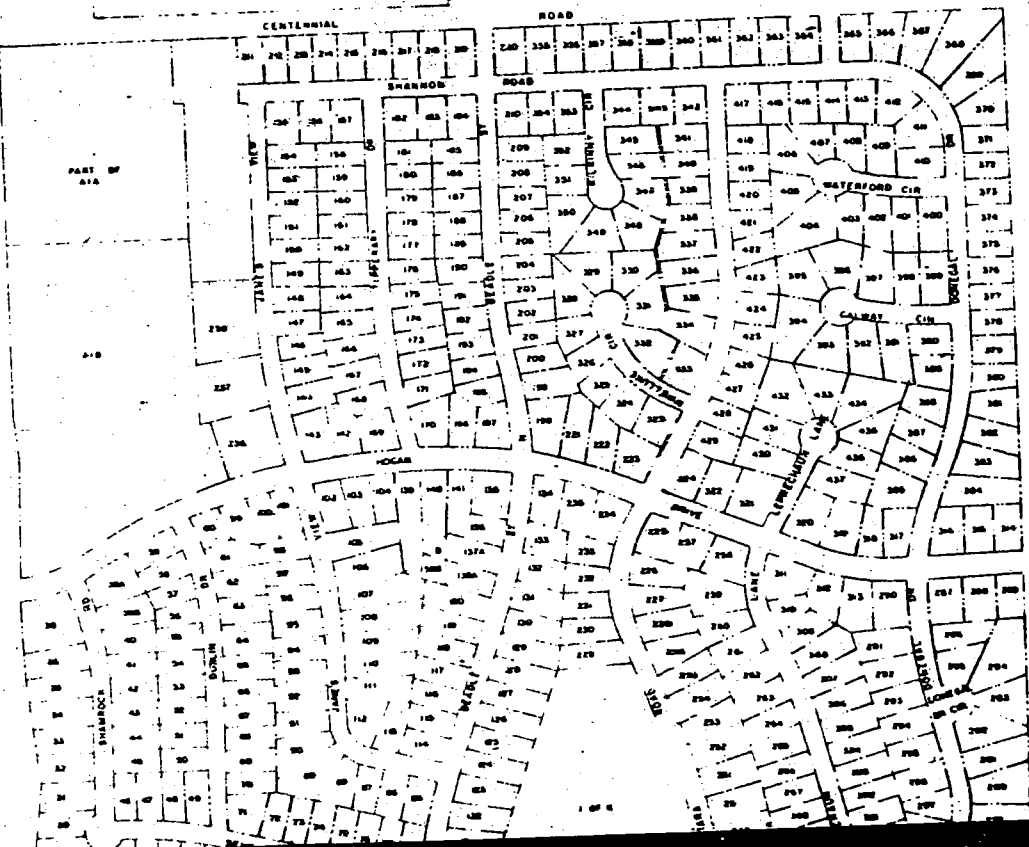
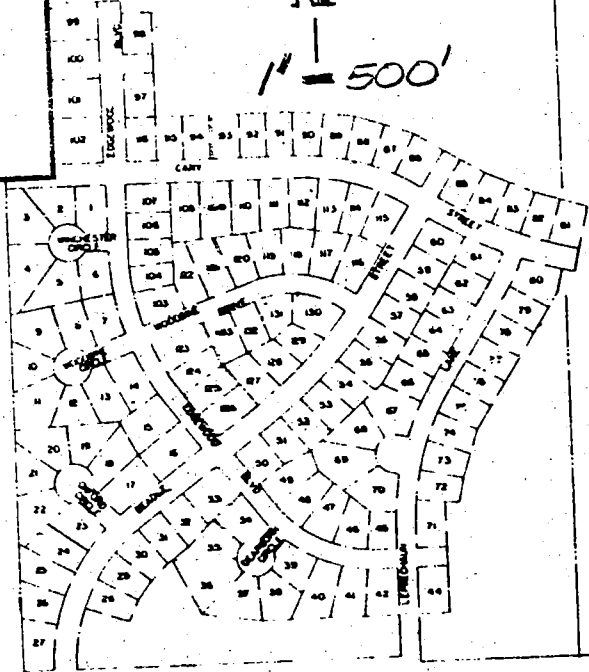
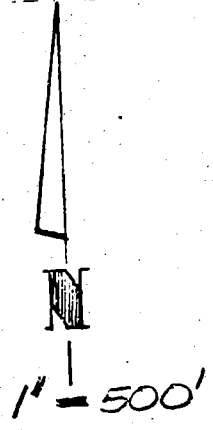
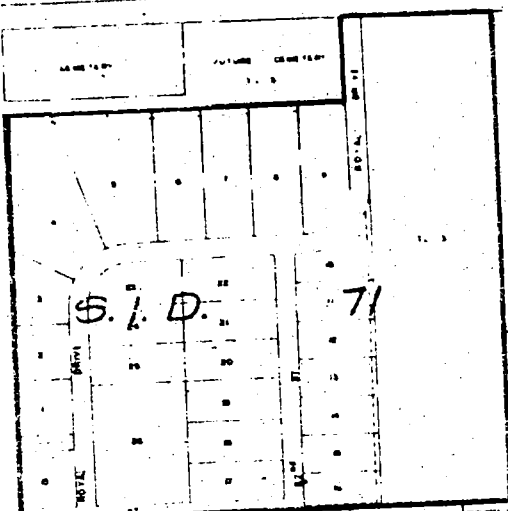
  
MAYOR

Attest:

  
CITY CLERK



1st reading 8-18-81  
2nd reading 5-18-82  
3rd reading 6-15-82



7

