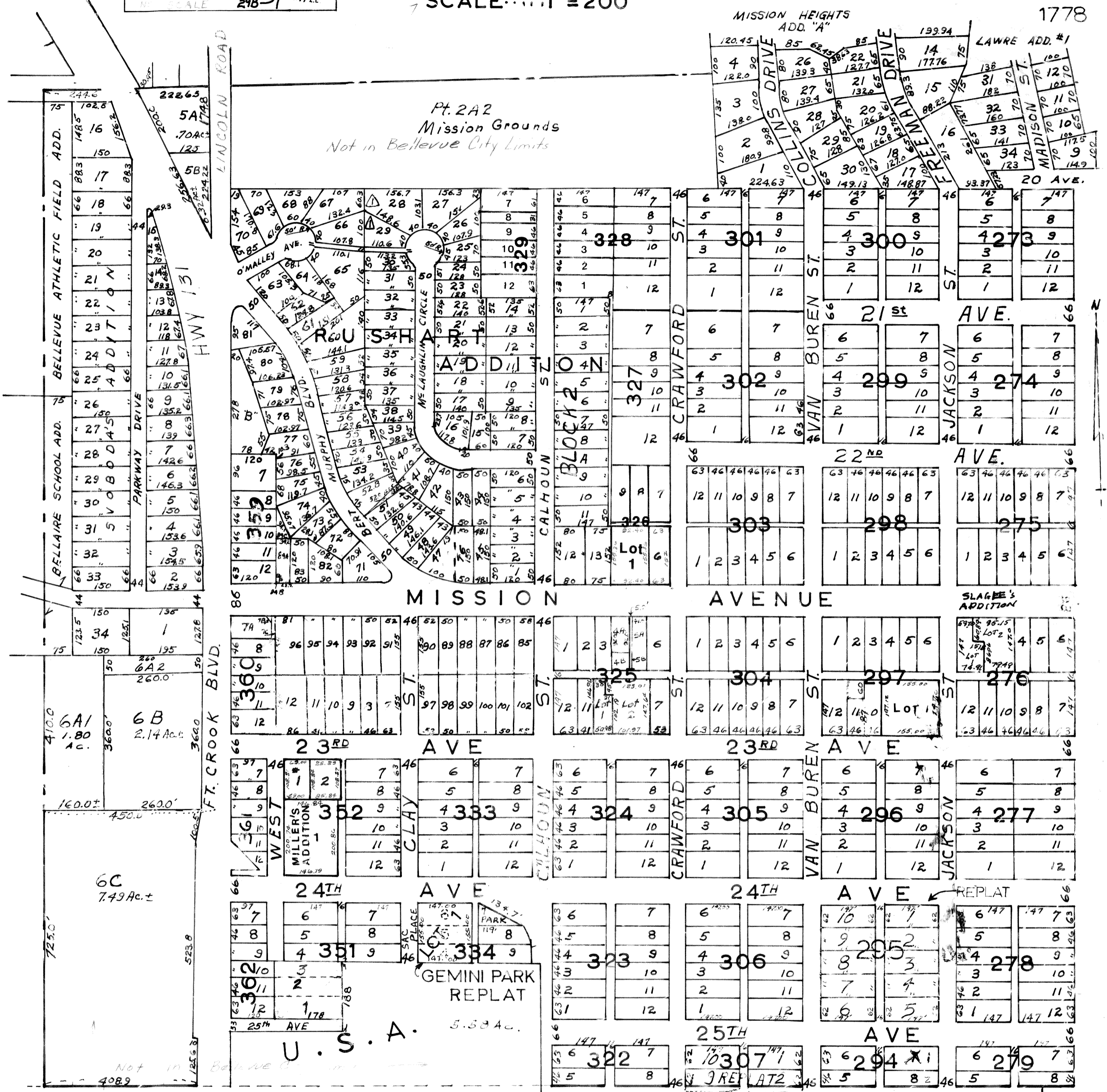


SW1/4-SEC.36-T14N-R13E

SCALE... 1" = 200'



BEAMAN'S ADDITION:
Replat of West 11' of lot 7, All of Lots 8, 9 & 10, the East 5' of lot 11 of Block 325 City of Bellevue.

Beaman's 2nd Addition
Replat of Lots 7, 8 and 9 Block 297

* Miller's 2nd Addition
Replat of Lot 5 1/2 of Block 352

Wootton's Addition, Replat of
Lots 4 and 5 Block 326

SARPY-COUNTY-SURVEYOR'S-OFFICE
AUGUST...1961

05-15-03-24954 Revised
10-24-83 10-7-84
5-14-90 5-28-86
11-09-90 8-20-86
5-23-96 Plat 6-3-83
1-13-11