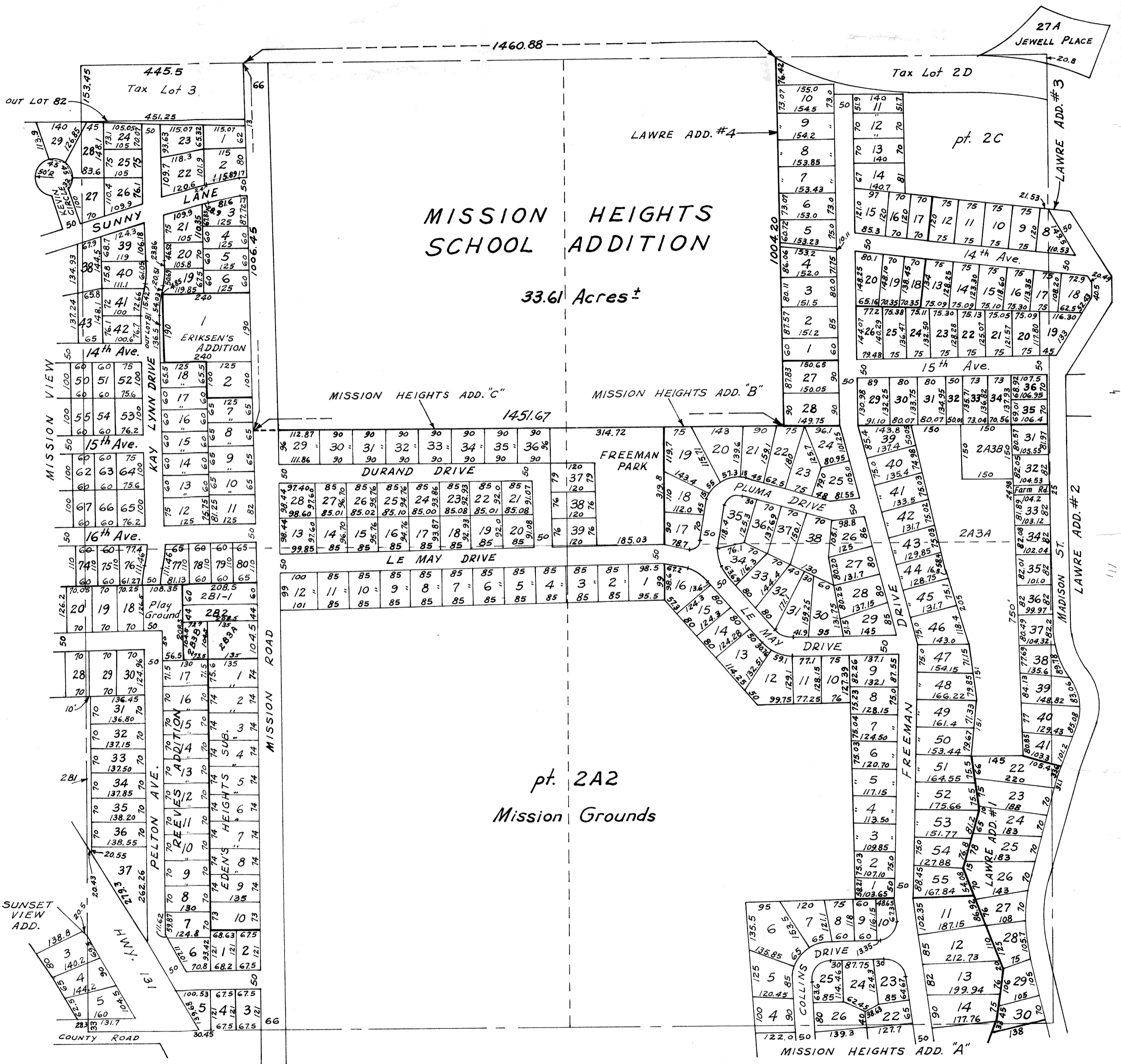


NW 1/4 SEC. 36-T14N-R13E

SCALE: 1"=200'



NOTE: QUARTER-SECTION LINES ON THIS PLAT ARE APPROXIMATE ONLY.

OFFICIAL PLAT  
SARPY COUNTY SURVEYOR'S OFFICE

JULY, 1961

F. I. W. - N. P. W.