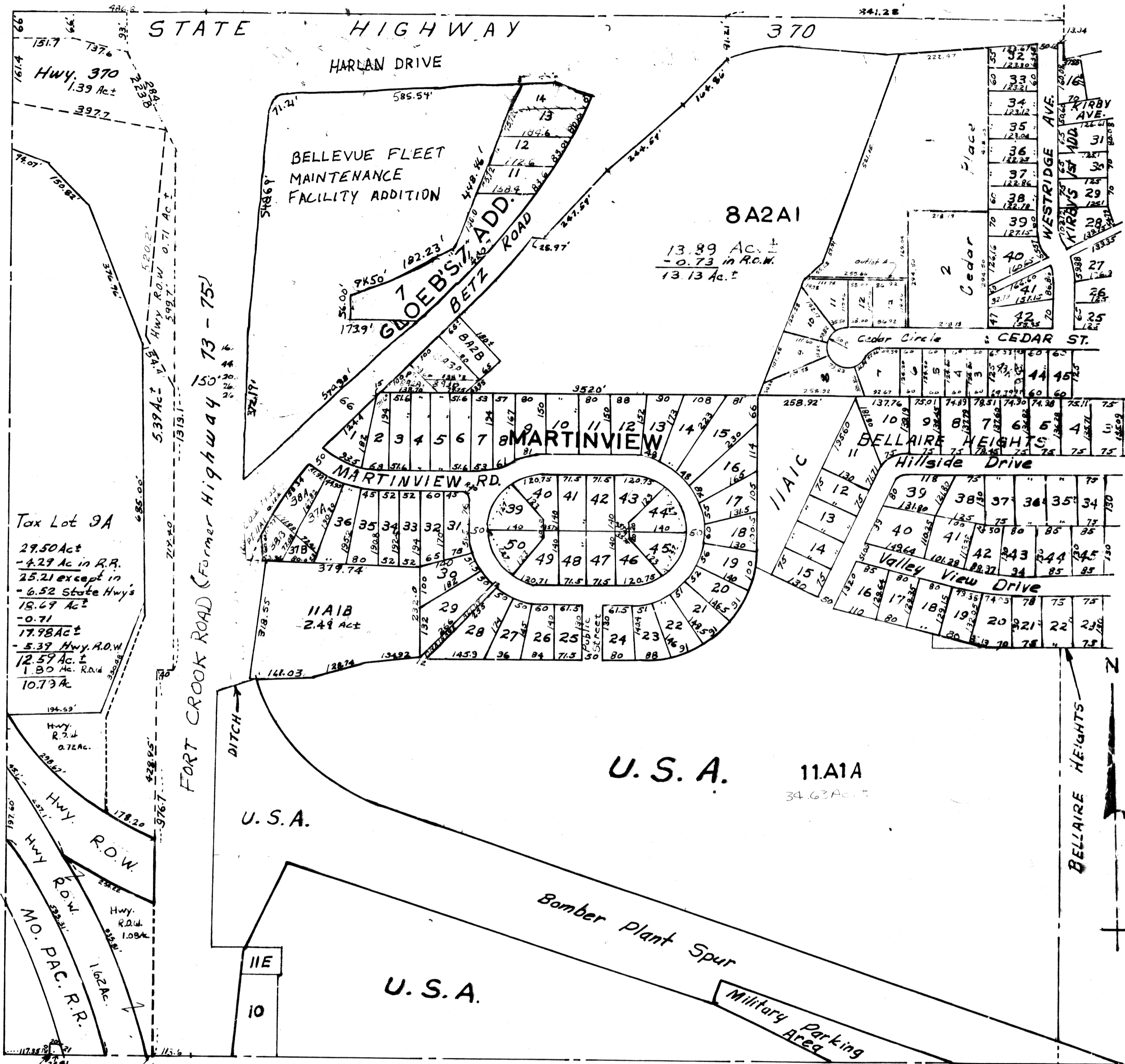


SW1/4-SEC.35-T14N-R13E
 scale: 1"=200'

1802



Tax Lot 9A
 29.50 Ac.
 - 4.29 Ac. in R.R.
 25.21 except in
 - 6.52 State Hwy's
 18.69 Ac.
 - 0.71
 17.98 Ac.
 - 5.39 Hwy. R.O.W.
 12.59 Ac.
 1.80 Ac. R.O.W.
 10.79 Ac.

SARPY COUNTY SURVEYORS OFFICE
 AUGUST 1961

| DATE | REVISED |
|------------|---------|
| 12/17/85 | 9-21-65 |
| 3/19/87 | 2-2-77 |
| 7/31/81 | 3-17-78 |
| 10-23-91 | 2-28-84 |
| 12-11-96 | 3-19-84 |
| 7-10-28/14 | 3-22-84 |