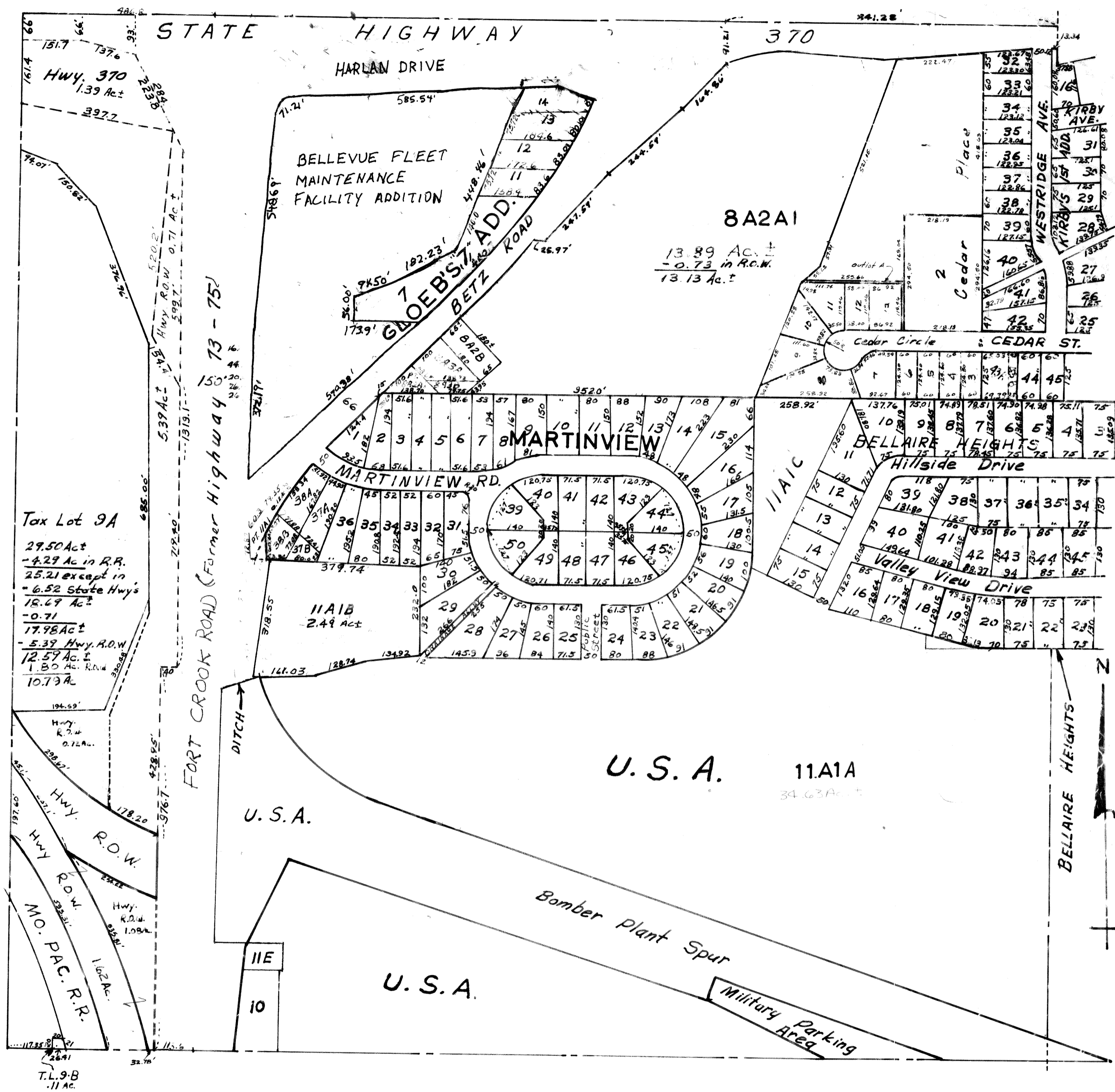


SW1/4-SEC.35-T14N-R13E

scale: 1"=200'

1802



Tax Lot 9A
29.50 Ac.
- 4.29 Ac in R.R.
25.21 except in
- 6.52 State Hwy's
18.69 Ac.
- 0.71
17.98 Ac.
- 5.37 Hwy. R.O.W.
12.57 Ac.
1.80 Ac. Road
10.73 Ac.

SARPY COUNTY SURVEYORS OFFICE
AUGUST 1961

REVISED	
12/17/85	9-21-65
3/19/87	2-2-77
7/31/89	3-17-79
10-23-91	2-28-84
12-11-96	3-19-84
7-10-98	