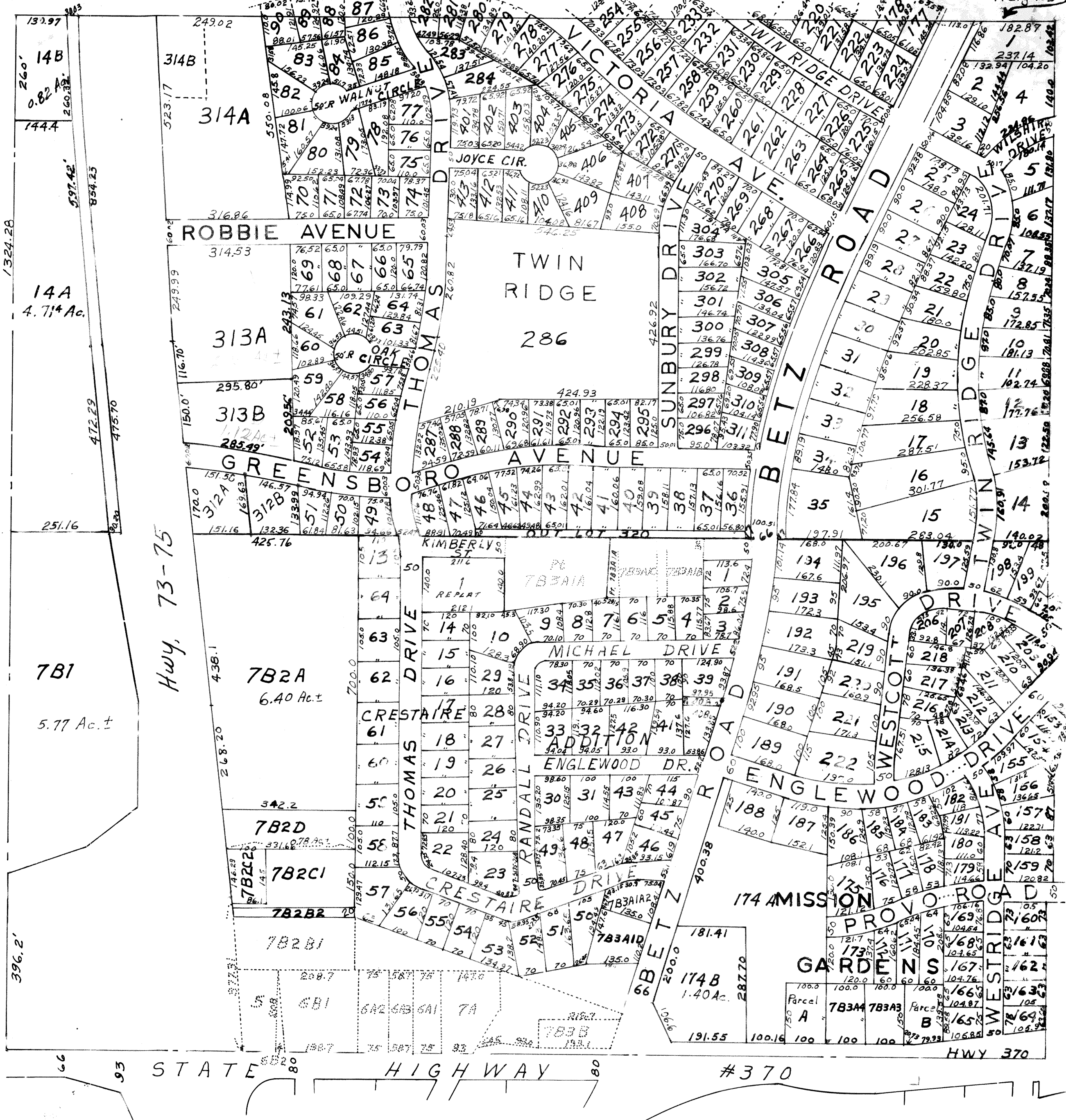


1232

NW1/4 SEC 35T14N R13E
scale: 1" = 200'

pt. Lot 1B | \pm
ADD TO Terrace
Heights



SARPY COUNTY SURVEYOR'S OFFICE
OCTOBER 1962

10-14-62
4-3-66
9-24-68
10-4-70
6-24-74

Re Plat Lot 1B/12