

NE 1/4, SEC. 34-T14N-R13E.

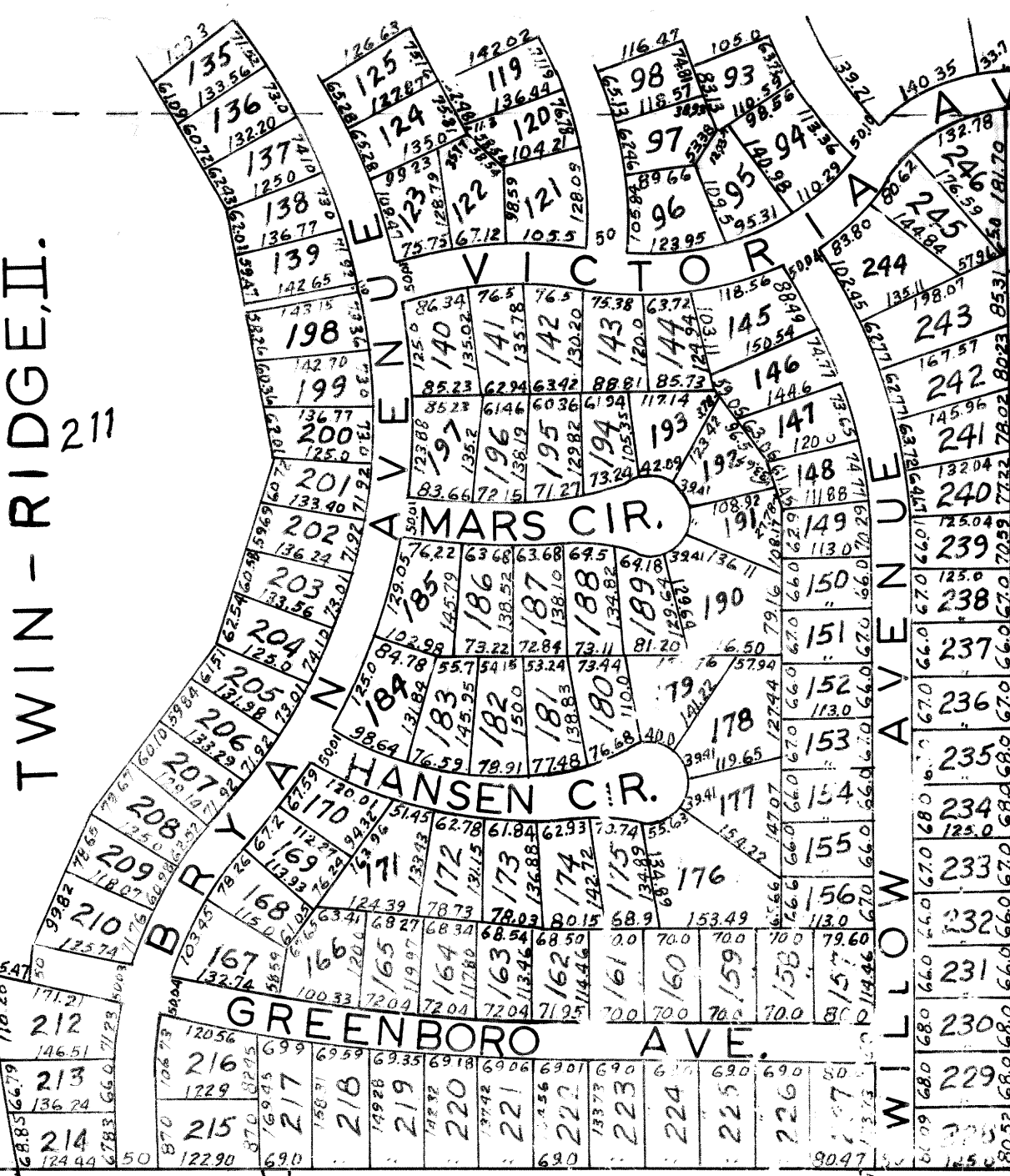
SCALE --- 1" = 200'

150	HAWORTH
150	1B
52	Ac.±
150	BLANN
150	1C
52	Ac.±
150	DECKER
150	1D
52	Ac.±
150	DECKER
150	1E
52	Ac.±
150	DECKER
150	1F
52	Ac.±
150	

T.L. 1A
53.05 Ac.±
WITH OUT TWIN RIDGE II

Missouri Pacific Railroad.
Chicago Burlington & Quincy Railroad

TWIN - RIDGE, II.
211



WILLIAM
2-B
0.92
FITZGERALD
ET AL

Globe REALTY,
Tax Lot 2-A
12.15 Ac.±
-0.92
11.23 Ac.±

SW 1/4 NE 1/4
40.00 Ac.±
-7.68
32.32 Ac.±
4.84 T.L. 4
27.48 Ac.±

T.L. 4
4.84 Ac.±

5
7.0 Ac.

T.L. 6
25.77 Ac.

HWY. #370

163 Ac.±

100
145 Ac.±

6.78 Ac.±

Sarpy County Surveyor's Office
APRIL, 1964
OCT, 1966