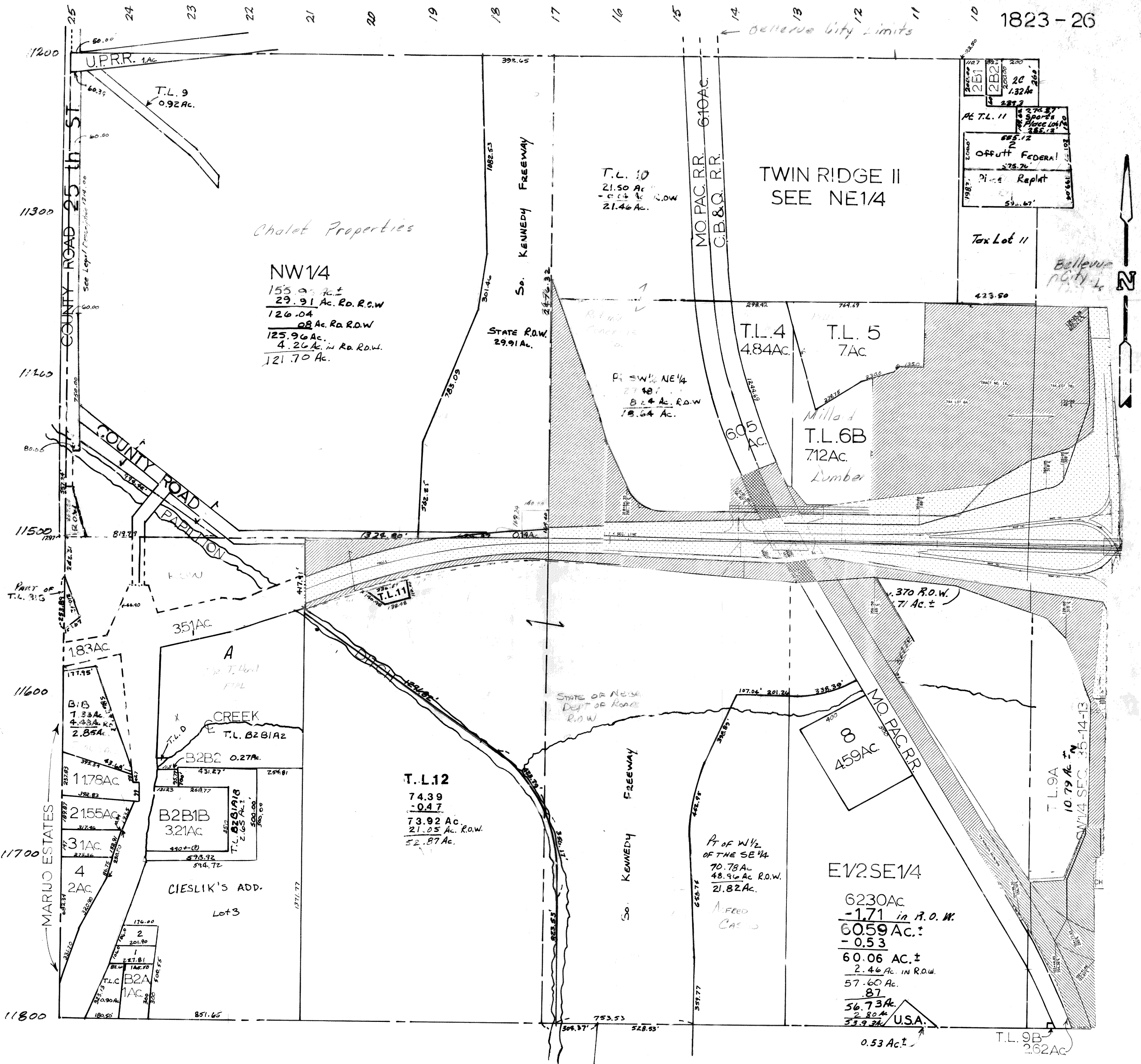


SEC 34 T14N - R13E  
SCALE 1" = 400'

1823-26



SARPY COUNTY SURVEYOR'S OFFICE  
OCTOBER 1961  
REVISED OCTOBER 1971

- JAN. 1979
- March 6, 1984
- March 20, 1984
- Sept. 26, 1984
- March 22, 1985
- July 26, 1985
- Nov. 7, 1985
- Dec. 17, 1985
- May 26, 1988
- Oct. 19, 1988
- JAN. 31, 1989
- Nov. 7, 1989
- 7-17-91
- 11-23-95 - ROW