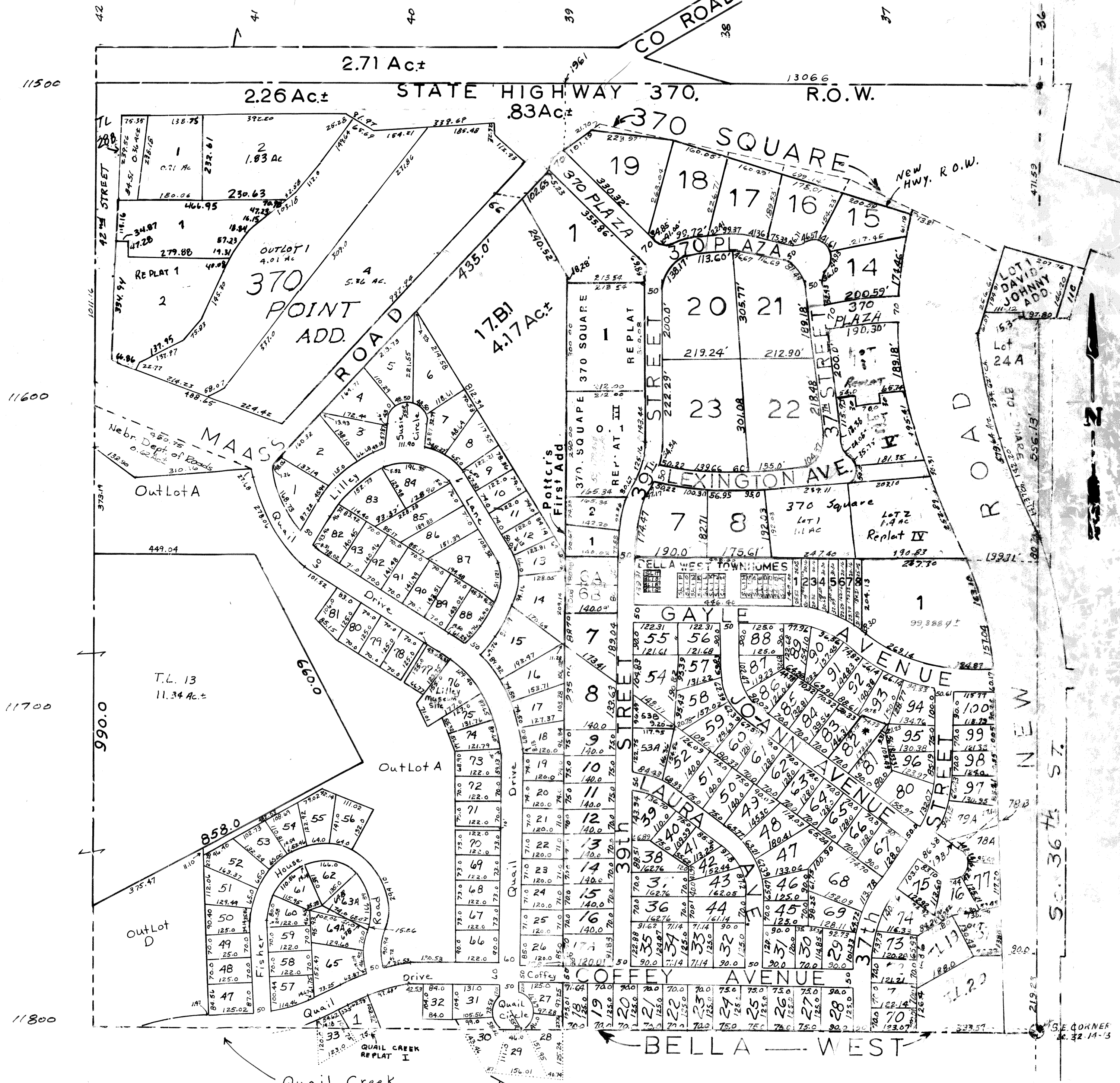


SE 1/4-SEC.32-T14N-R13E  
SCALE — 1" = 200'

1873



See Original for  
BELLA WEST TOWNHOMES

BELLA WEST REPLAT II  
A REPLAT OF LOT 2 AND PART LOT 3  
BELLA WEST REPLAT III  
LOTS 1 THRU 8 INCLUSIVE  
A REPLAT OF LOTS 1 AND 2 OF REPLAT II

SARPY COUNTY SURVEYOR'S OFFICE  
DECEMBER 1963

Revised

- 12-11-96 4-30-87 4-15-68
- 09-05-01-Plat 5-27-87 10-10-73
- 06-02-03-Plat 5-30-88 7-19-77
- 11-15-04-PLAT 3-13-89 10-10-77
- 4-3-89 12-7-77
- 8-31-90 8-19-83
- 1-9-92 9-12-85
- 7-2-92 11-25-85
- 5-26-96 Plat