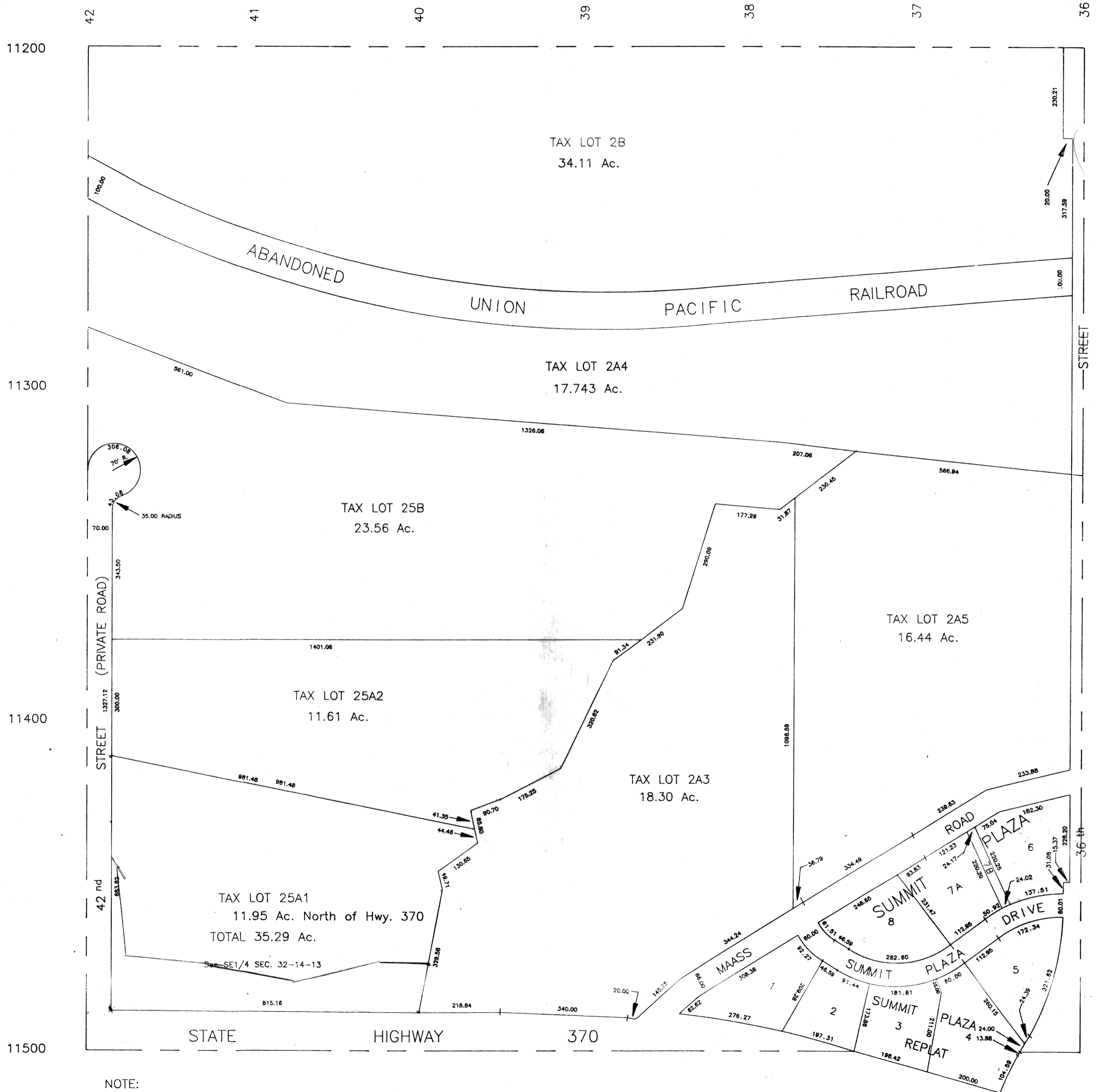


NE1/4 SEC. 32 T14N R13E

SCALE 1" = 200'

1871



NOTE:
TAX LOT 25A1 South of Hwy. 370 has 23.34 Ac.

SARPY COUNTY SURVEYOR
DECEMBER 1961

REVISED
6- 6-90
6-22-90
12-27-90
11-15-91