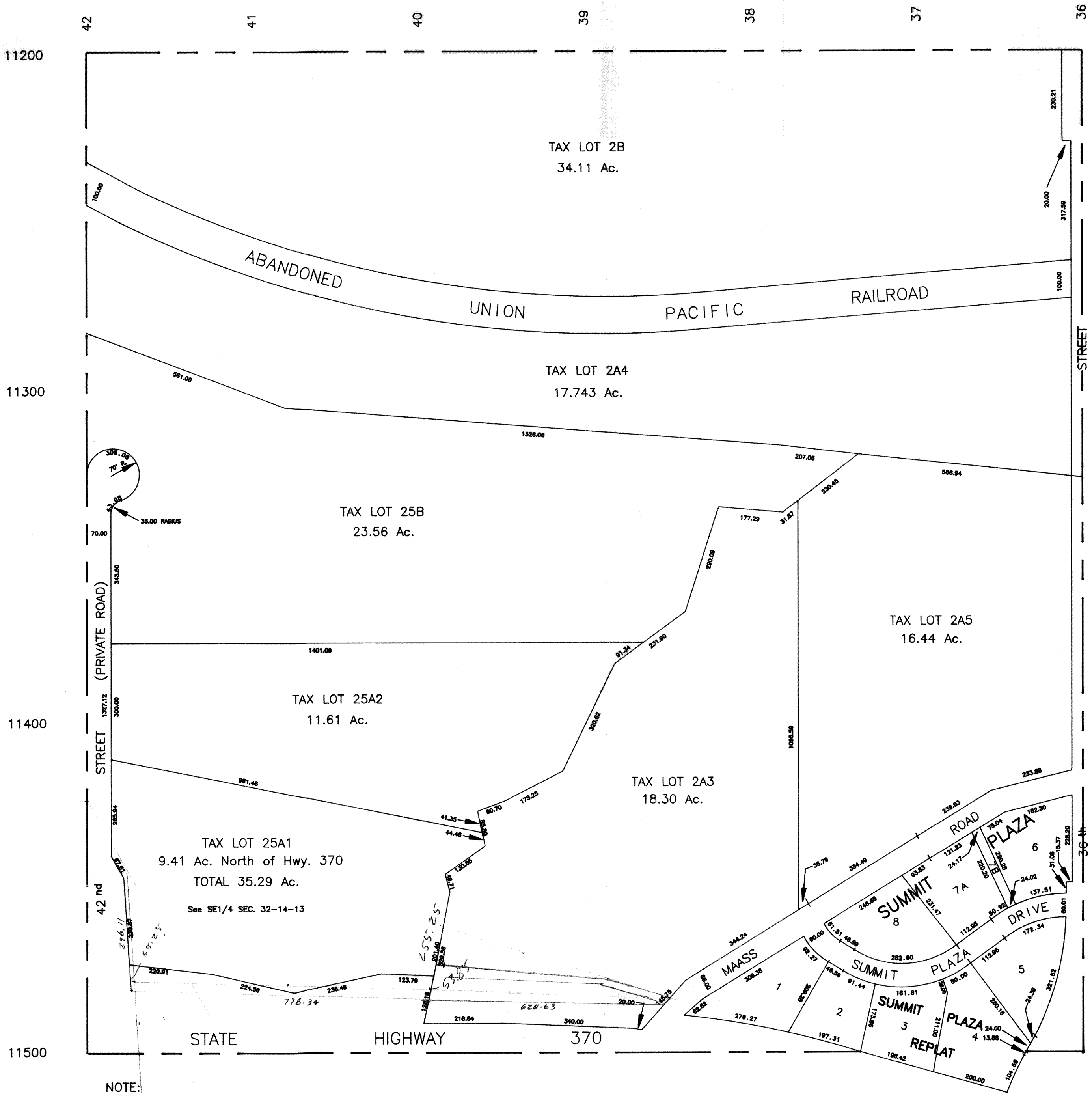


NE1/4 SEC. 32 T14N R13E

SCALE 1" = 200'

1871



NOTE:
TAX LOT 25A1 South of Hwy. 370 has 23.34 Ac.

SARPY COUNTY
SURVEYOR'S OFFICE

REVISIONS

- 6- 6-90
- 6-22-90
- 12-27-90
- 11-15-91