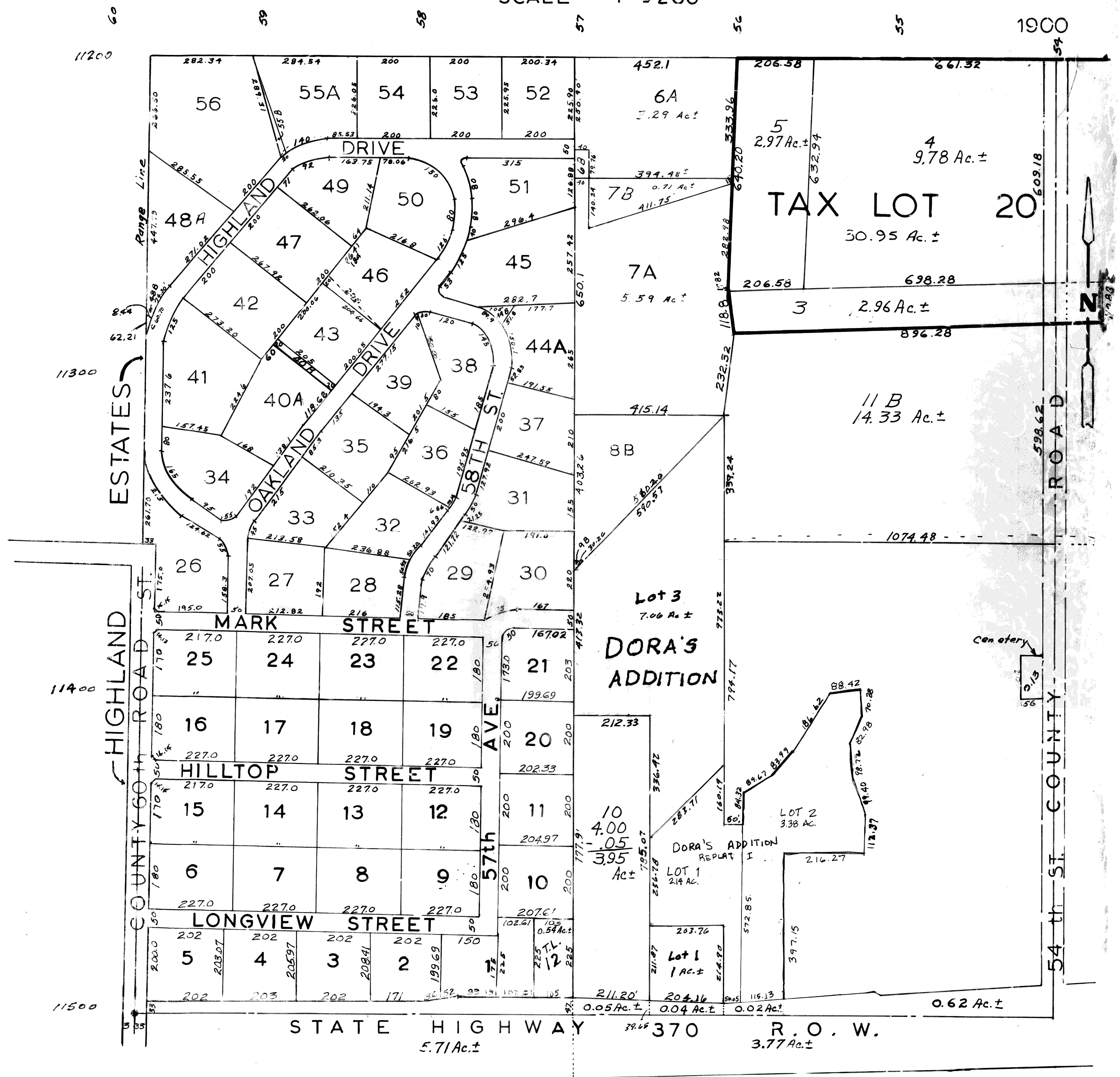


NW 1/4-SE C.31-T14N-R13E.  
SCALE — 1" = 200'



SARPY COUNTY SURVEYOR'S OFFICE  
DECEMBER - 1963

REVISED  
4-6-95 1-3-66  
12-04-97 5-27-70  
05-14-98 12-9-77  
4-16-81  
1-9-55