

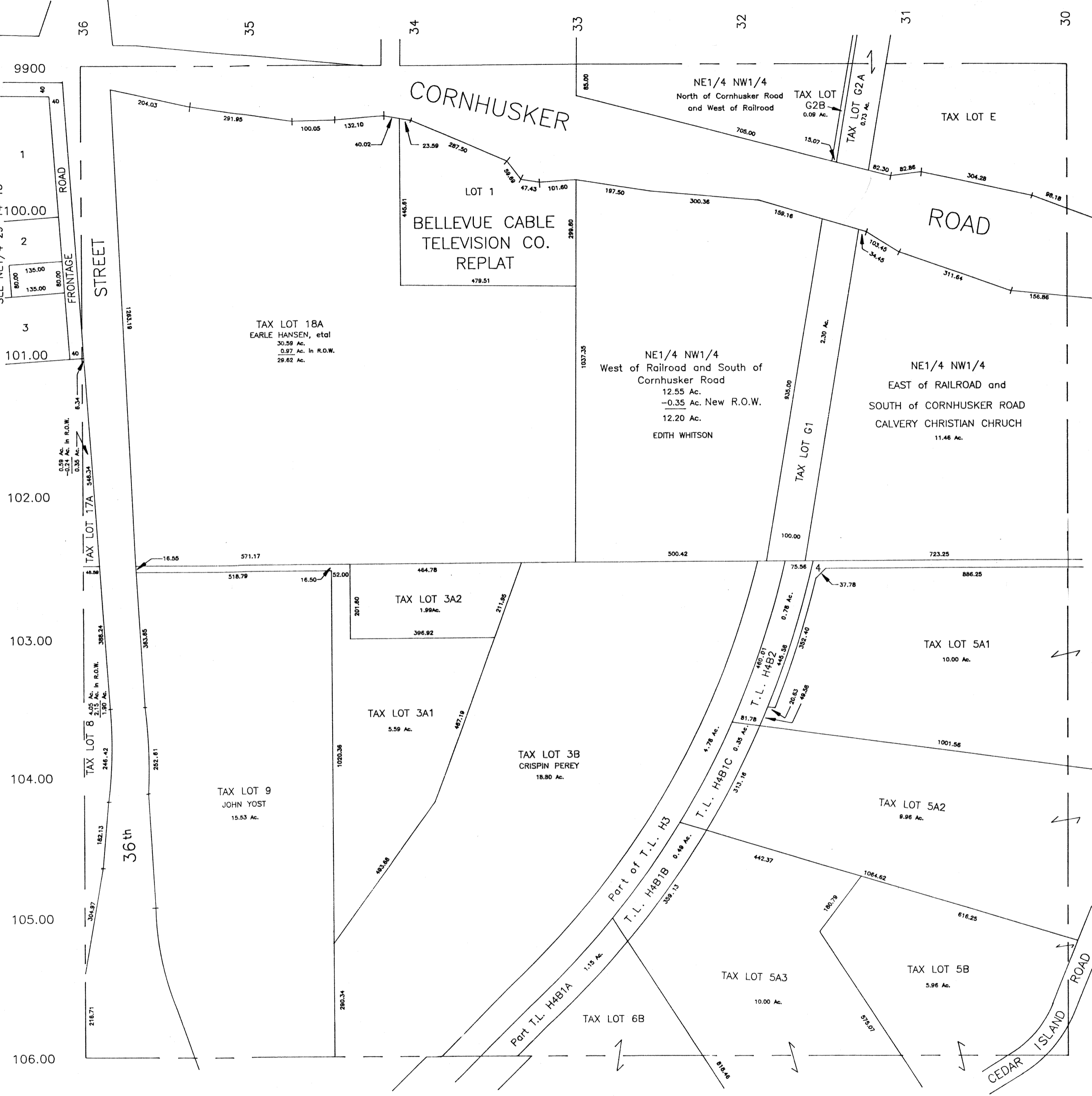
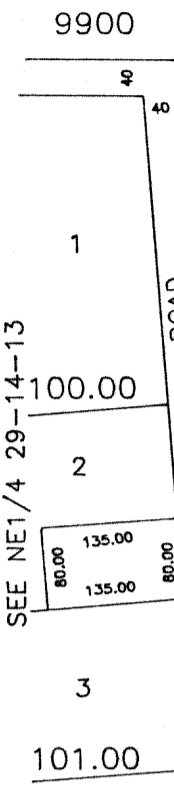
NW1/4 SEC. 28 T14N-R13E

SCALE 1" = 200'

1048

DVORSKY'S COMMERCIAL INDUSTRIAL  
SUBDIVISION # II

SEE NE1/4 29-14-13



SARPY COUNTY SURVEYOR  
FEBRUARY 1976

REVISED

- 7-21-77     8-18-85
- 9-20-78     11- 6-85
- 7-18-79     1-22-86
- 10-22-79    9-17-90
- 4-16-80     2-06-91
- 4-26-83

See NE1/4 Section 28 T14N-R13E