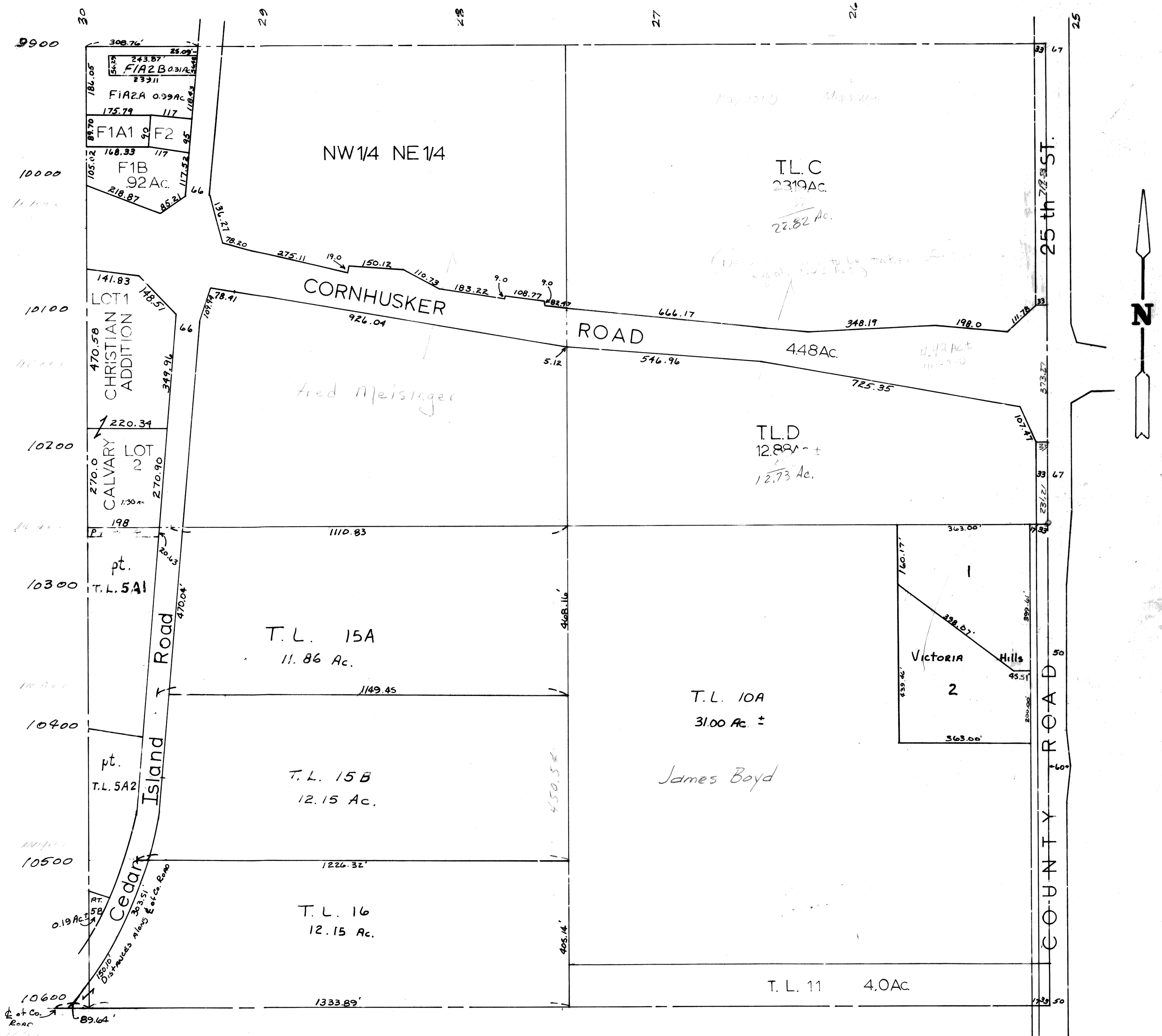


NE 1/4 SEC. 28 T14N. R13E.  
SCALE - 1" = 200'

RONALD A. RYSTROM  
SARPY COUNTY SURVEYOR

1047



NE 1/4 NE 1/4: T.L.S, C, D, EXCEPT CO. RD. SARPY COUNTY SURVEYOR'S OFFICE  
R.O.W. 36.07 AC. ± FEBRUARY 1976

REVISED  
2-10-76  
3-29-77  
9-20-78  
11-22-78  
12-13-78  
2-24-83