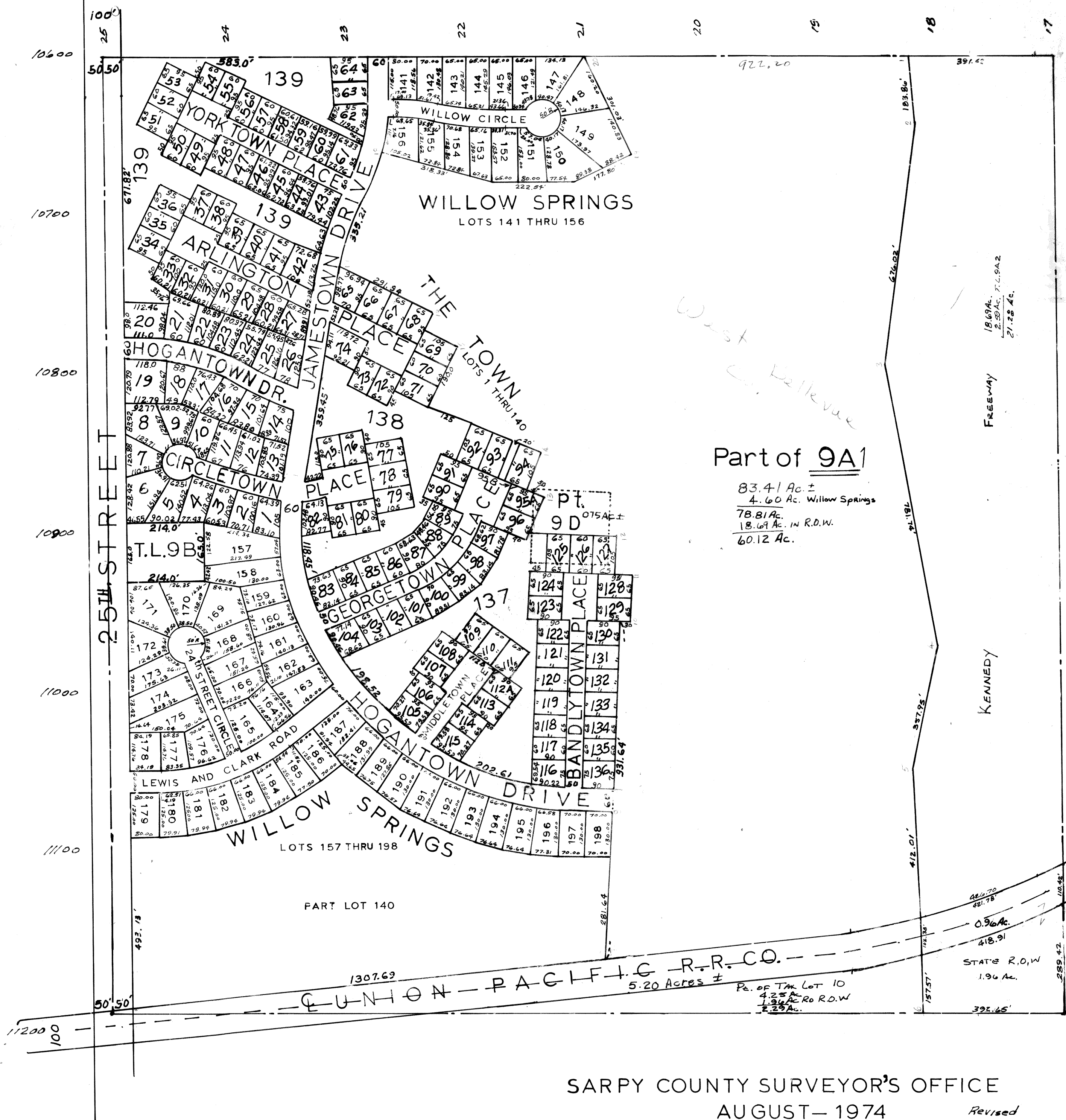


SW 1/4 SEC. 27-T14N-R13E.  
SCALE - 1"=200'



Part of 9A1

83.41 Ac. ±  
4.60 Ac. Willow Springs  
78.81 Ac.  
18.69 Ac. in R.O.W.  
60.12 Ac.

SARPY COUNTY SURVEYOR'S OFFICE  
AUGUST-1974

Revised  
12-13-83  
7-22-86  
5-26-88  
9-13-88  
11-6-89  
3-18-91

The Town Contains  
62.64 Acres ±.